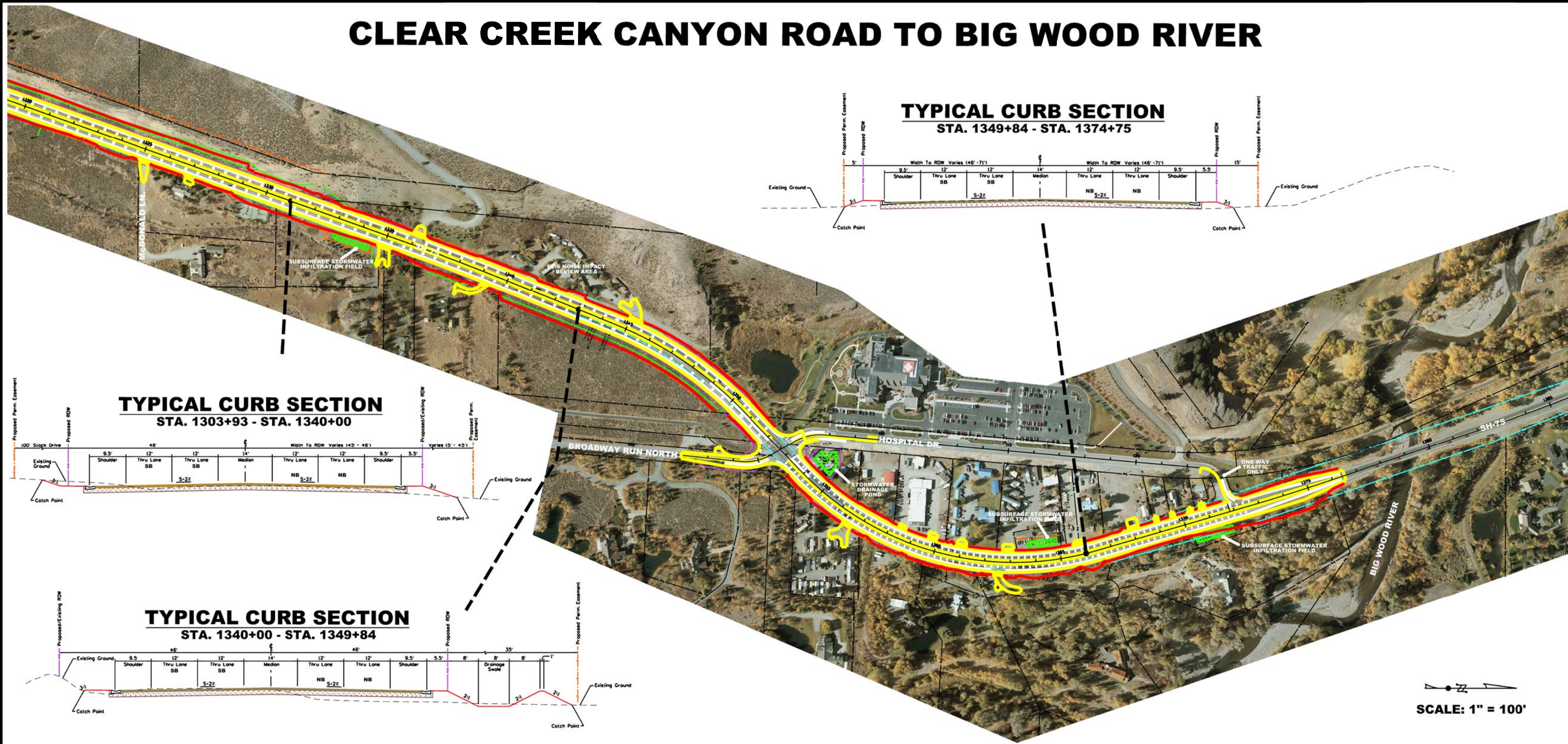
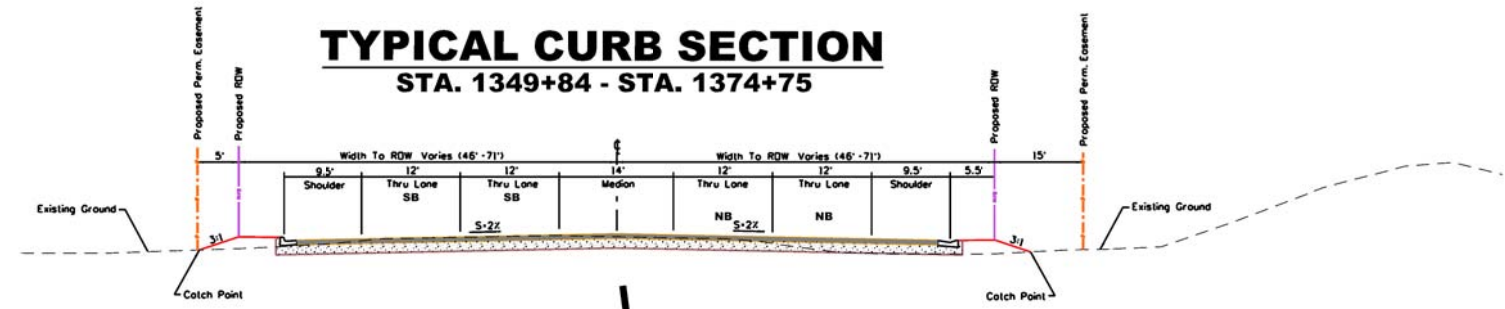


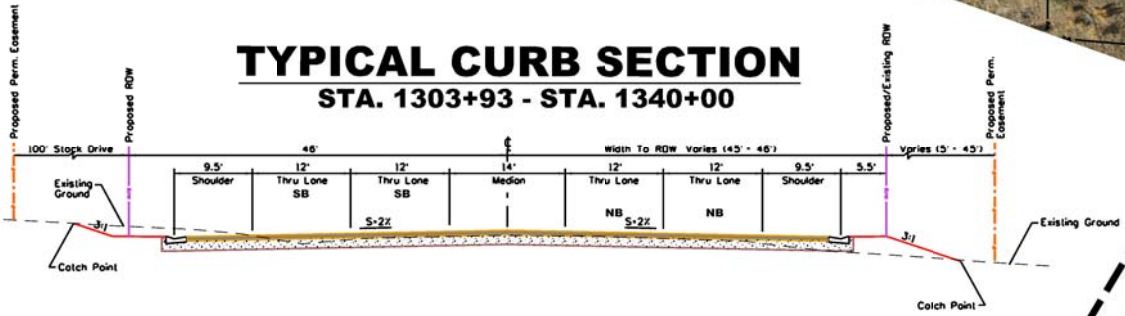
CLEAR CREEK CANYON ROAD TO BIG WOOD RIVER



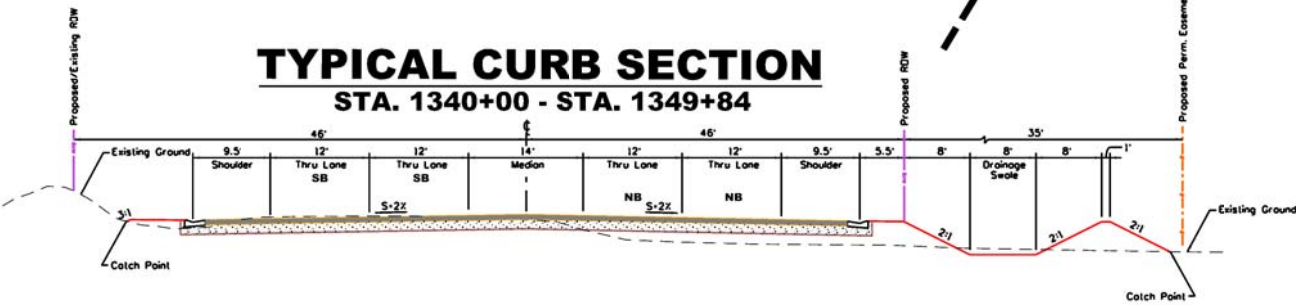
TYPICAL CURB SECTION
STA. 1349+84 - STA. 1374+75



TYPICAL CURB SECTION
STA. 1303+93 - STA. 1340+00



TYPICAL CURB SECTION
STA. 1340+00 - STA. 1349+84



SCALE: 1" = 100'

NOTE: RIGHT-OF-WAY LINES, APPROACHES, AND INFORMATION SHOWN ON DESIGN HEARING PLANS ARE SUBJECT TO CHANGE AS THE PROJECT PROGRESSES TO FINAL DESIGN.

SH-75, TIMBER WAY TO BIG WOOD RIVER BRIDGE
PROJECT NO. STP-2390(138), KEY NO. 07836
JUNE 2010



- LEGEND**
- PROPOSED EDGE OF PAVEMENT
 - EXISTING RIGHT-OF-WAY
 - PROPOSED RIGHT-OF-WAY
 - PROPOSED PERMANENT EASEMENT
 - PROPOSED CATCH POINT
 - PROPOSED DRAINAGE