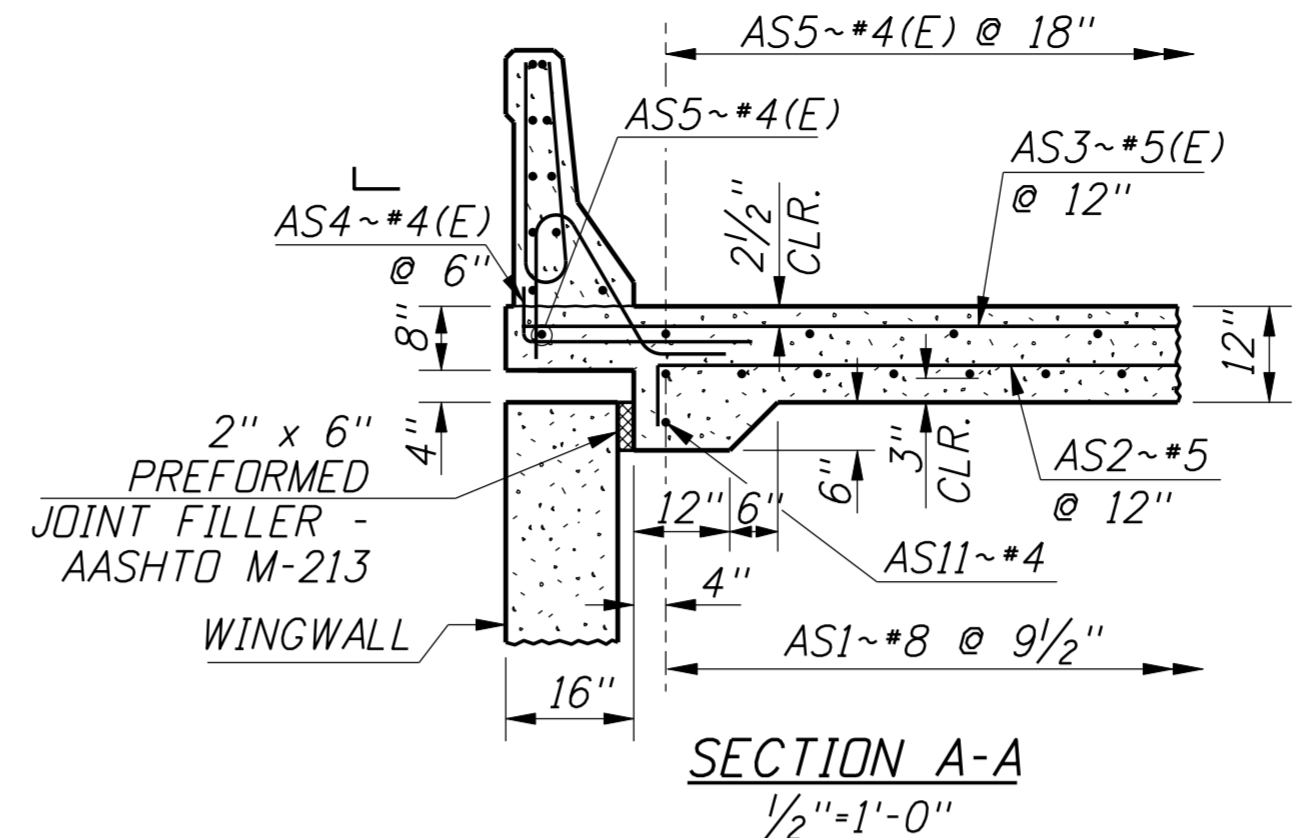
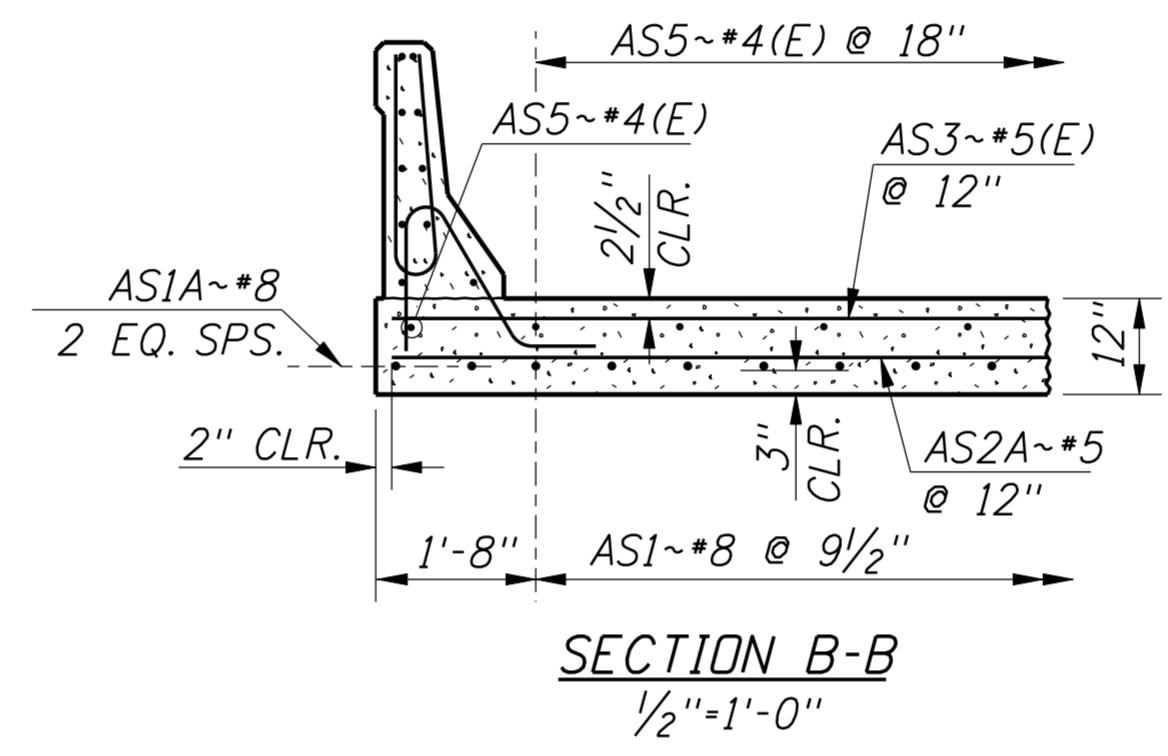


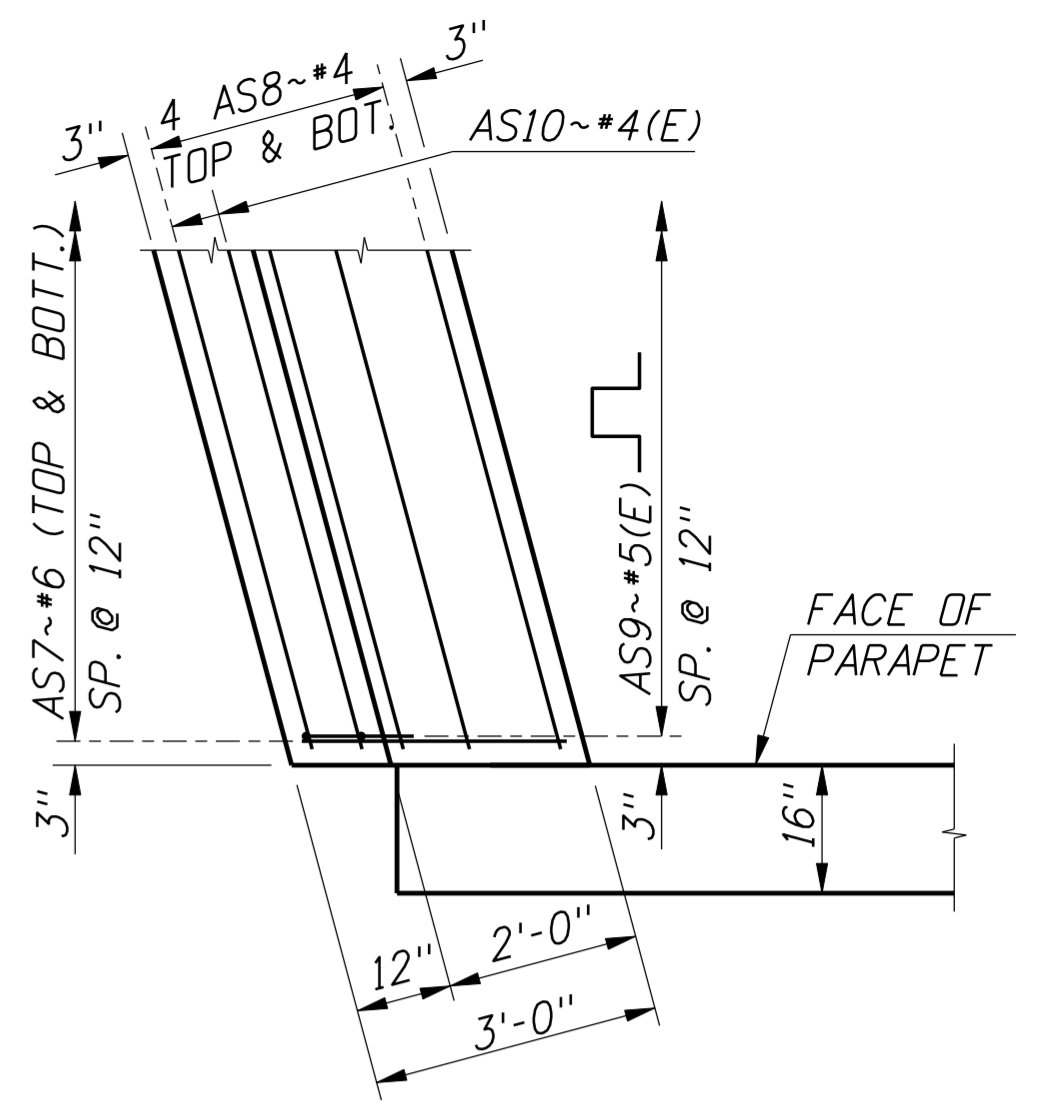
APPROACH SLAB - PLAN  
1/4"=1'-0"



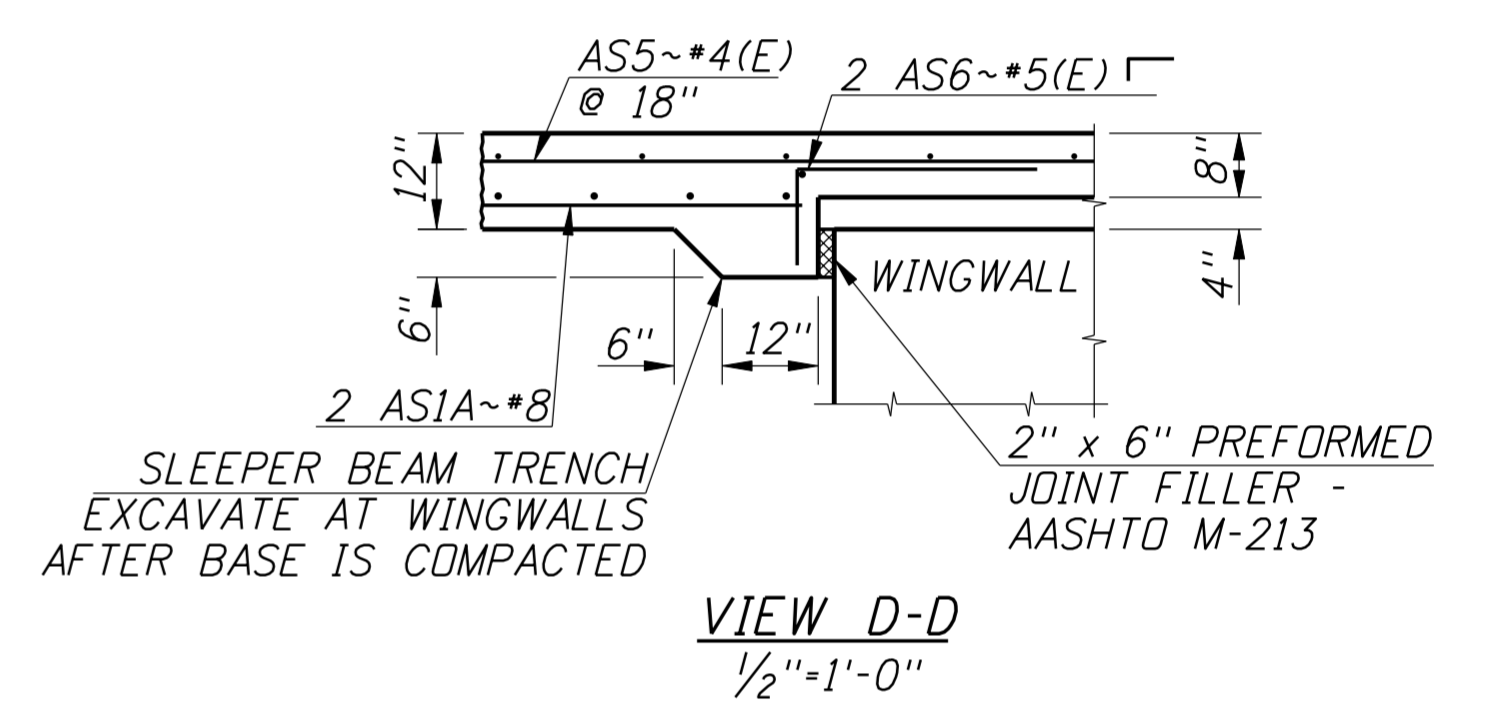
SECTION A-A  
1/2"=1'-0"



SECTION B-B  
1/2"=1'-0"



PLAN  
CONCRETE SLEEPER BEAM  
1/2"=1'-0"

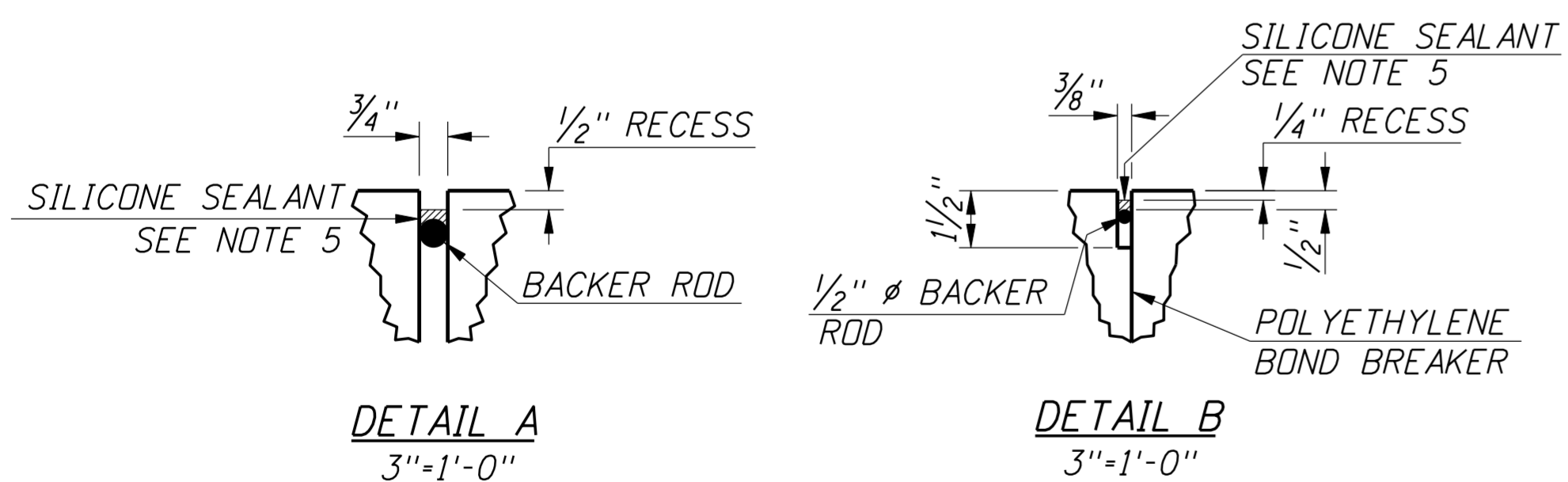


VIEW D-D  
1/2"=1'-0"

APPROXIMATE QUANTITIES

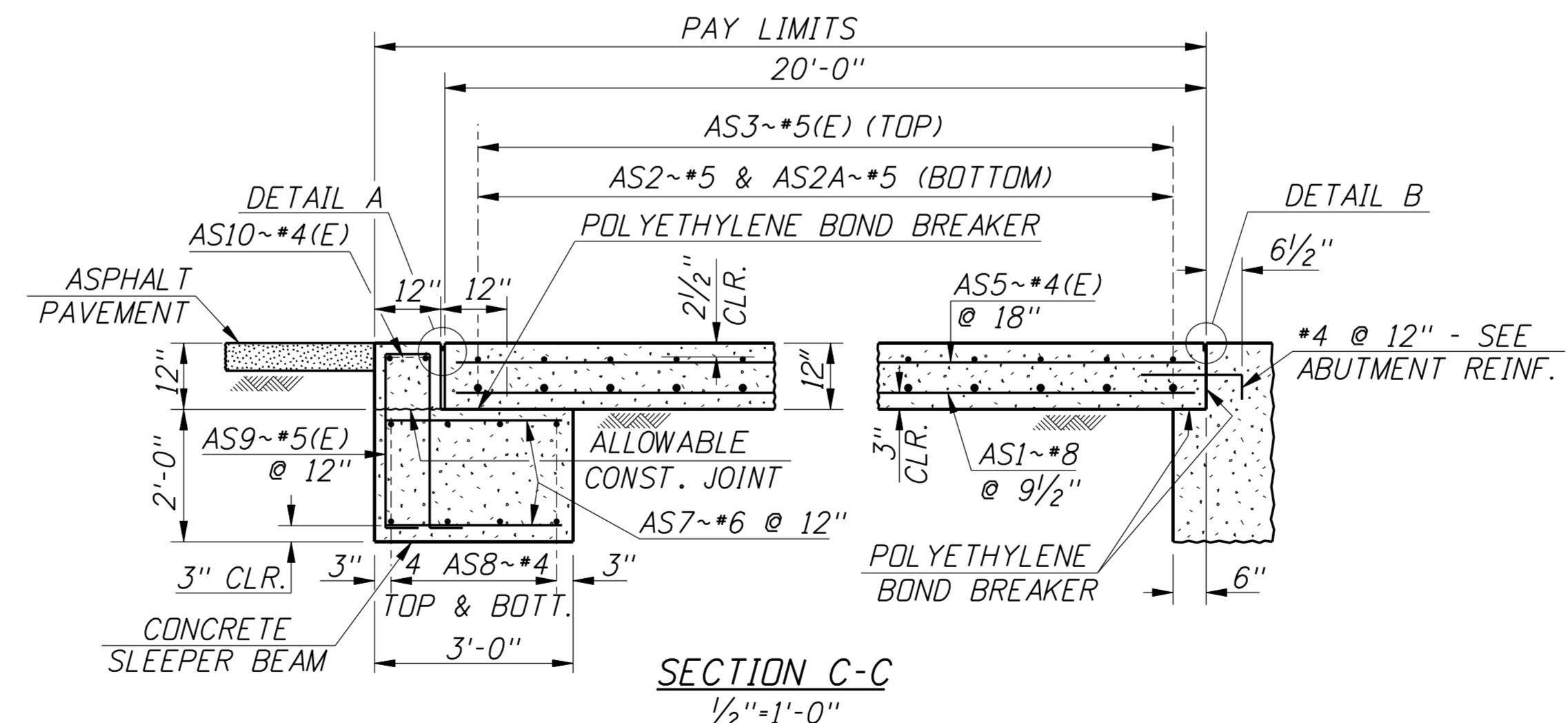
CONCRETE	0 CY
PLAIN REINF.	0 LB
EPOXY REINF.	0 LB

- NOTES
- BEFORE POURING THE APPROACH SLAB, PROVIDE A 2' DEEP BASE OF GRANULAR MATERIAL COMPACTED TO MEET CLASS "A" COMPACTION REQUIREMENTS.
  - PLACE LONGITUDINAL REINFORCEMENT PARALLEL TO THE CENTERLINE OF THE ROADWAY. FOR SKEWS LESS THAN 20°, PLACE THE TRANSVERSE REINFORCEMENT PARALLEL TO THE ABUTMENT. FOR SKEWS GREATER THAN 20°, PLACE THE TRANSVERSE REINFORCEMENT PERPENDICULAR TO THE CENTERLINE OF THE ROADWAY.
  - ALL REINFORCEMENT SHALL BE AASHTO M31 (ASTM A615) GRADE 60. THE TOP MAT OF BOTH TRANSVERSE AND LONGITUDINAL REINFORCEMENT SHALL BE EPOXY COATED. ALL BEND DETAILS TO BE ACCORDING TO THE LATEST A.C.I. STANDARD PRACTICE AND AASHTO SPECIFICATIONS.
  - APPROACH SLAB CONCRETE SHALL BE CLASS 40A.
  - SILICONE JOINT SEAL SHALL BE DOW CORNING 902, WATSON BOWMAN SILICONE SEALANT, OR APPROVED EQUAL. THE JOINT SHALL BE INSTALLED IN ACCORDANCE WITH THE MANUFACTURER'S SPECIFICATIONS.
  - PLACE POLYETHYLENE BOND BREAKER OR FILTER FABRIC BETWEEN APPROACH SLAB AND SUBGRADE.
  - APPROACH SLAB WILL BE MEASURED BY THE SQUARE YARD, COMPLETE IN PLACE AND WILL BE PAID FOR UNDER THE BID ITEM 502-435A.



DETAIL A  
3"=1'-0"

DETAIL B  
3"=1'-0"



SECTION C-C  
1/2"=1'-0"

REVISIONS

NO.	DATE	BY	DESCRIPTION

DESIGNED

DESIGN CHECKED
DETAILED
DWG. CHECKED
CORRECTIONS

SCALES SHOWN ARE FOR 34" X 22" PRINTS ONLY

CADD FILE NO.  
X:\cadd\std\_dgns\b02\_ib.dgn

DRAWING DATE:  
MAR 2011

ORIGINAL SIGNED BY:  
DATE SIGNED: DATE  
INTERNAL STORED AT: ITO-BRIDGE-SECTION

IDAHO TRANSPORTATION DEPARTMENT

English

PROJECT NO.

APPROACH SLAB DETAILS - ASPHALT PAVEMENT

SKEW > 0° (45° MAX.) NO ABUTMENT JOINT

BRIDGE PLANS

BRIDGE LRFD MANUAL, PAGE B2.1B

COUNTY	KEY NO.
BRIDGE DRAWING NO.	SHEET
	OF