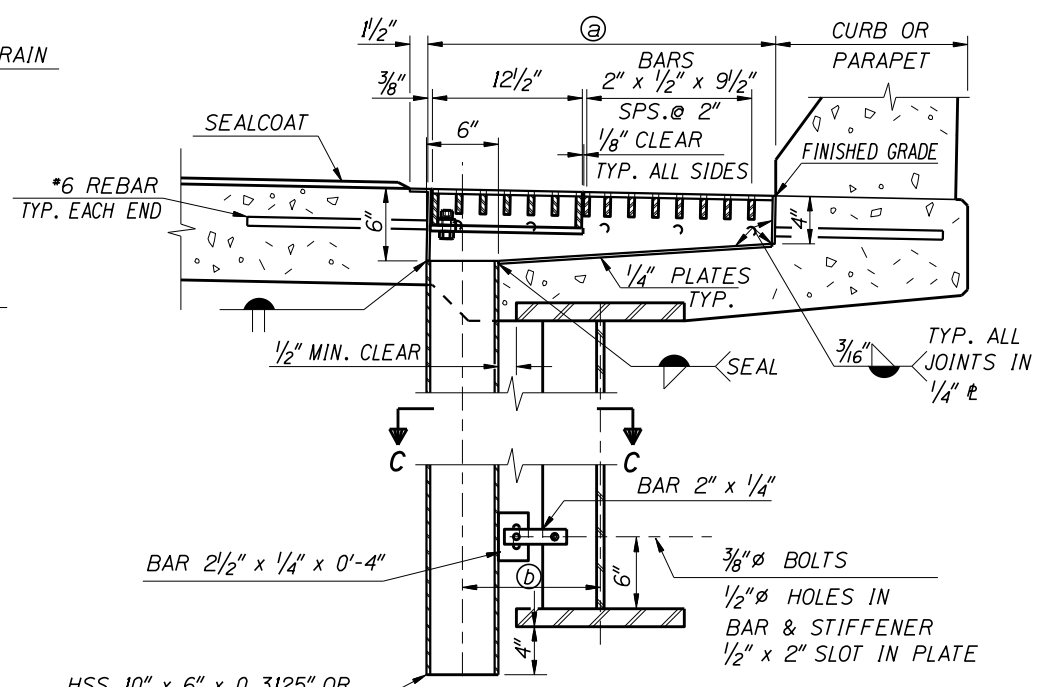


DRAIN PLAN
1 1/2"=1'-0"
(REMOVABLE GRATING NOT SHOWN)



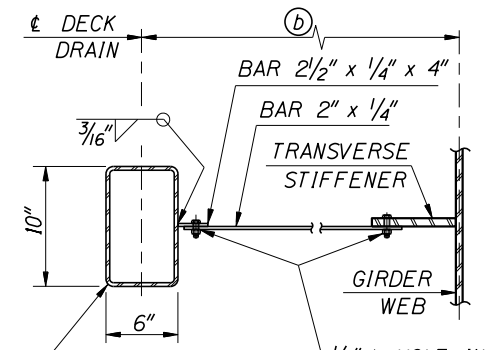
SECTION A-A
1 1/2"=1'-0"

DIMENSION

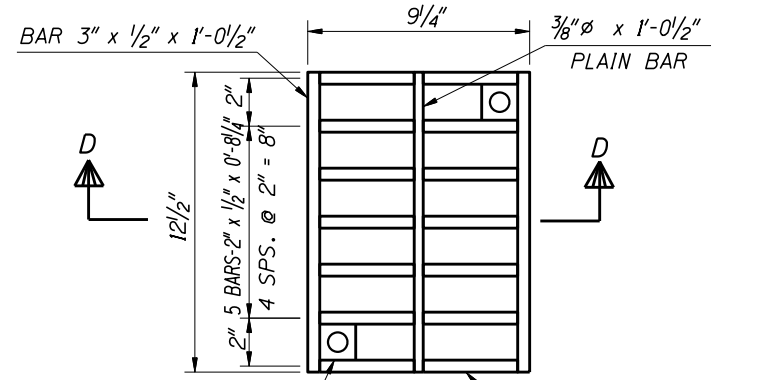
(a)	
(b)	

DRAIN NOTES

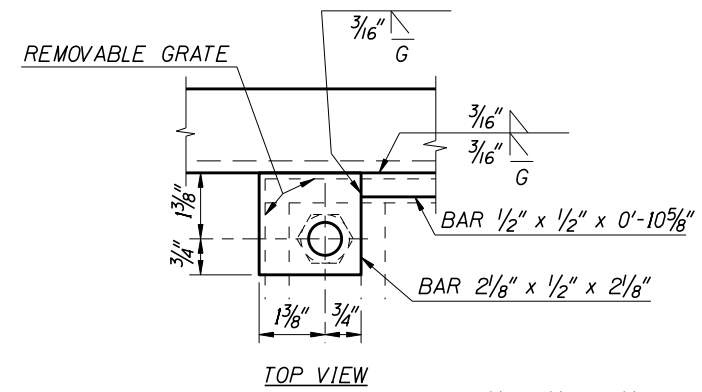
1. DRAIN ASSEMBLY SHALL BE GALVANIZED AFTER FABRICATION ~ HOT DIP AS PER AASHTO M-111.
2. ALL SEAMS NOT SHOWN WELDED ARE TO BE SEAL WELDED FOR GALVANIZING. SEAMS ON TOP OF DRAIN SHALL BE GROUND SMOOTH.
3. SHOP DRAWINGS SHALL BE SUBMITTED TO THE ENGINEER IN ACCORDANCE WITH SECTION 504 AND SHALL INCLUDE COMPLETE DIMENSIONS AND DETAILS OF FABRICATION. MATERIALS BEING USED SHALL BE CLEARLY SPECIFIED. BEFORE PROJECT COMPLETION, THE CONTRACTOR SHALL FURNISH THE ENGINEER A 22" X 34" REPRODUCIBLE MYLAR COPY OF THE SHOP DRAWINGS.
4. FIELD BEND OR CUT ANY BARS THAT CONFLICT WITH DRAINS.
5. STRUCTURAL STEEL SHALL BE AASHTO M-270 GR. 36. STRUCTURAL STEEL TUBING SHALL BE ASTM A-500 OR A-501.
6. CAP SCREWS SHALL BE 5/8" - 11 UNC X 1 3/4" STAINLESS STEEL HEXAGON SOCKET HEAD CAP SCREWS 18-8 SS.
7. THE COST OF FURNISHING AND INSTALLING THE DRAIN ASSEMBLIES SHALL BE INCLUDED IN THE UNIT PRICE BID FOR CONCRETE CLASS 40A.



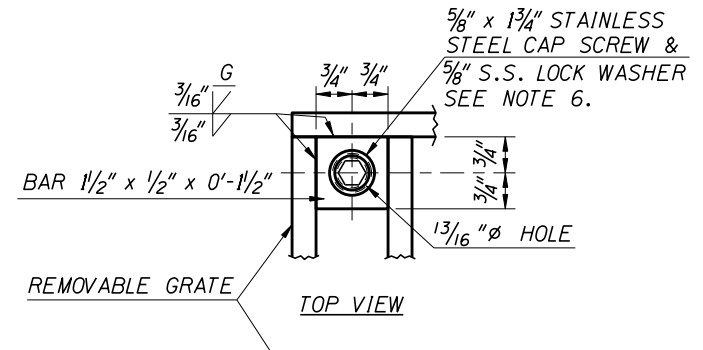
SECTION C-C
1 1/2"=1'-0"



REMOVABLE GRATE
3"=1'-0"



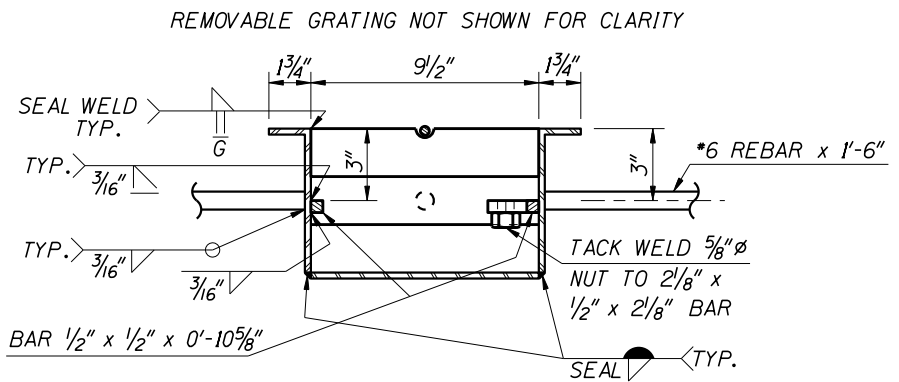
DETAIL E
LOWER BRACKETS



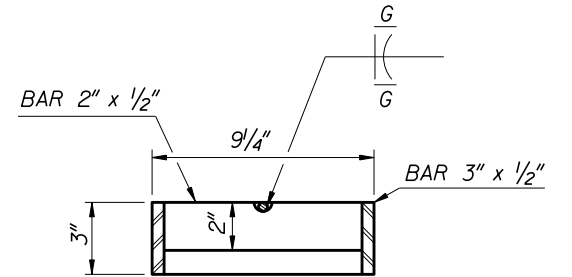
DETAIL D
UPPER BRACKETS



ALTERNATE CONNECTION DETAIL
1 1/2"=1'-0"



SECTION B-B
3"=1'-0"



SECTION D-D
3"=1'-0"

REVISIONS

NO.	DATE	BY	DESCRIPTION

DESIGNED

DESIGN CHECKED

DETAILED

DWG. CHECKED

CORRECTIONS

SCALES SHOWN ARE FOR 34" X 22" PRINTS ONLY

CADD FILE NO.
prj00000\bridge\ b02_2b.dgn

DRAWING DATE:
MAY 2002

ORIGINAL SIGNED BY:

DATE SIGNED: DATE

ORIGINAL STORED AT: ITO BRIDGE SECTION

IDAHO TRANSPORTATION DEPARTMENT

English

PROJECT NO.

BRIDGE DRAIN DETAILS - TYPE 2

BRIDGE PLANS

BRIDGE LRFD MANUAL, PAGE B2.2B

COUNTY KEY NO.

BRIDGE DRAWING NO. SHEET OF