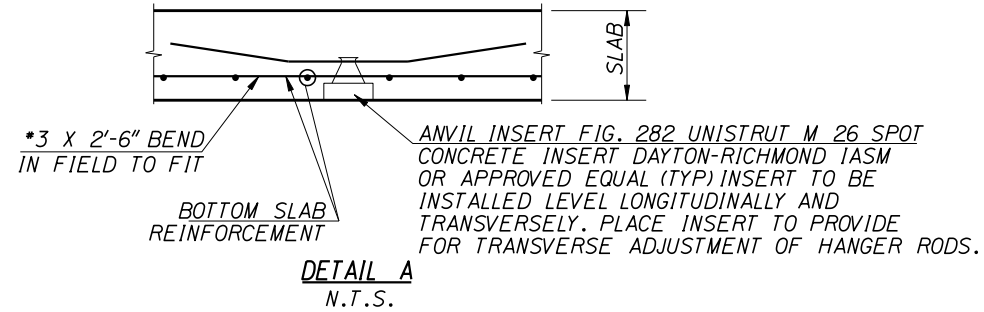


INTERMEDIATE DIAPHRAGM DETAILS
3/8"=1'-0"

PVC INSERTS FOR STEEL CONDUIT.
EXTEND 6" EACH SIDE OF DIAPHRAGM.
CAP BOTH ENDS OF UNUSED INSERTS.



DETAIL A
N.T.S.

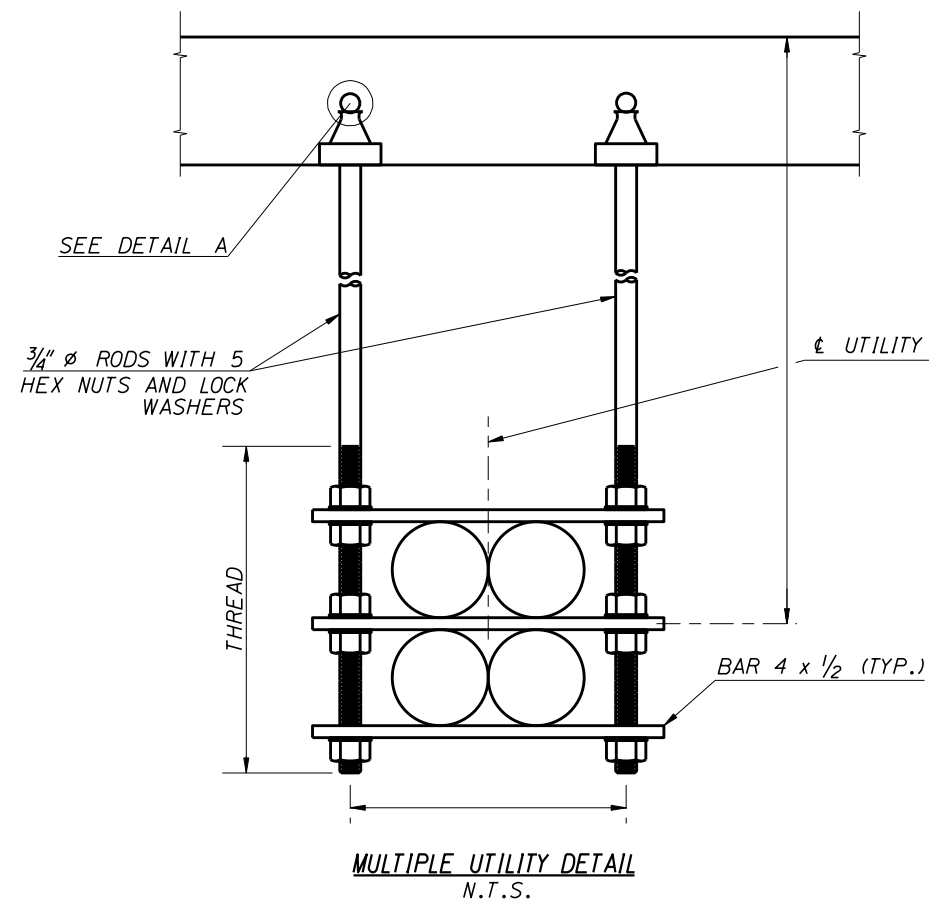
*3 X 2'-6" BEND
IN FIELD TO FIT

BOTTOM SLAB
REINFORCEMENT

ANVIL INSERT FIG. 282 UNISTRUT M 26 SPOT
CONCRETE INSERT DAYTON-RICHMOND IASM
OR APPROVED EQUAL (TYP) INSERT TO BE
INSTALLED LEVEL LONGITUDINALLY AND
TRANSVERSELY. PLACE INSERT TO PROVIDE
FOR TRANSVERSE ADJUSTMENT OF HANGER RODS.

NOTES

1. UNUSED CONDUIT SHALL HAVE A PULL ROPE INSTALLED AND SHALL BE CAPPED AT BOTH ENDS.
2. ALL MATERIALS SHALL BE GALVANIZED AFTER FABRICATION IN ACCORDANCE WITH AASHTO M111 OR AASHTO M232.
3. ANY PAINTED SURFACES DAMAGED DURING CONSTRUCTION SHALL BE CLEANED AND PAINTED AS DIRECTED BY THE ENGINEER. ANY PAINT SPLATTER SHALL BE REMOVED FROM THE BRIDGE.



MULTIPLE UTILITY DETAIL
N.T.S.

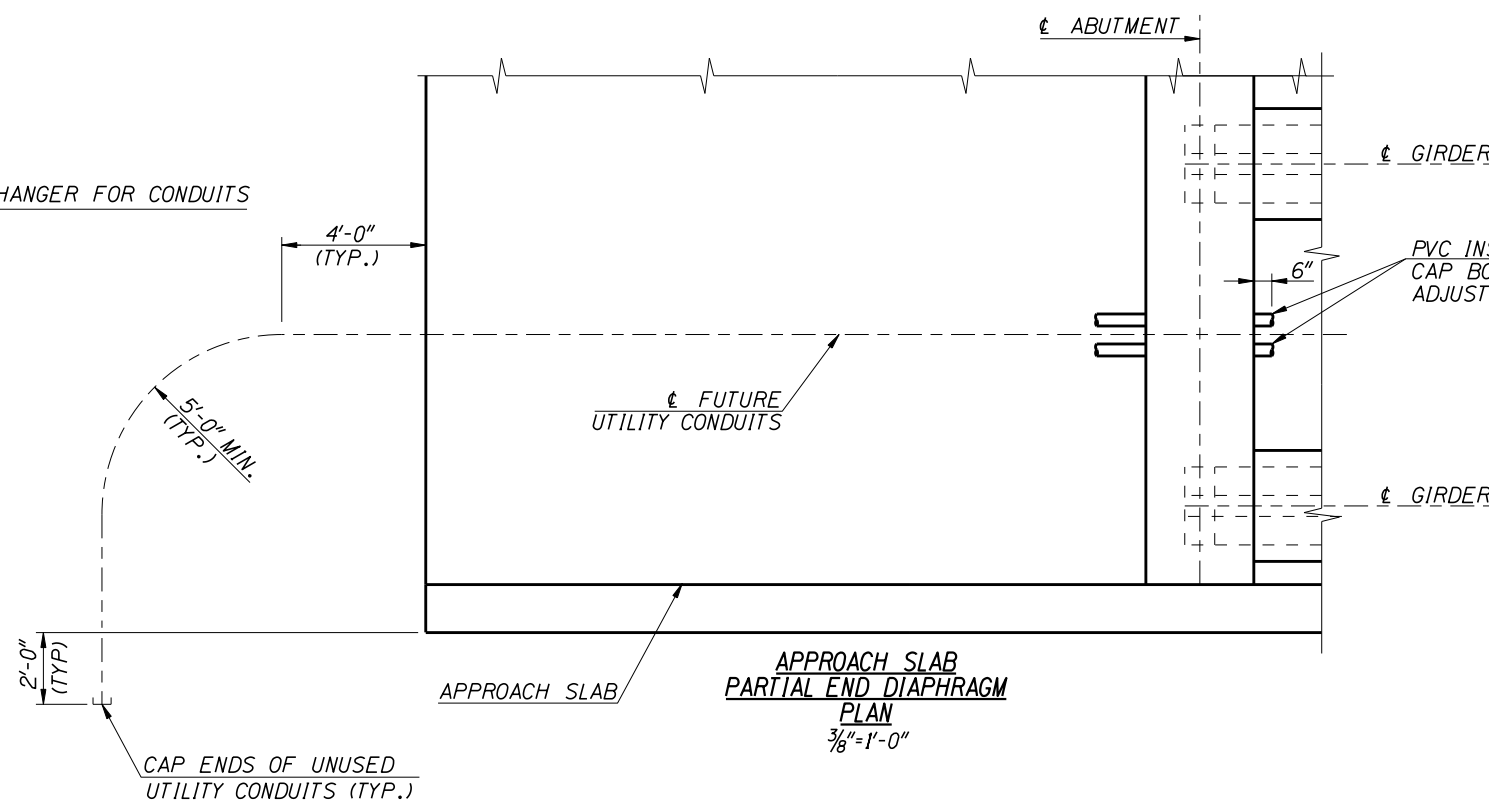
SEE DETAIL A

3/4" ϕ RODS WITH 5
HEX NUTS AND LOCK
WASHERS

UTILITY HANGER FOR CONDUITS

BAR 4 x 1/2 (TYP.)

THREAD



**APPROACH SLAB
PARTIAL END DIAPHRAGM
PLAN**
3/8"=1'-0"

ABUTMENT

GIRDER

PVC INSERTS FOR STEEL CONDUIT.
CAP BOTH ENDS OF UNUSED INSERTS.
ADJUST REINFORCING TO CLEAR.

GIRDER

FUTURE
UTILITY CONDUITS

APPROACH SLAB

2'-0"
(TYP.)

CAP ENDS OF UNUSED
UTILITY CONDUITS (TYP.)

REVISIONS			
NO.	DATE	BY	DESCRIPTION
△			
△			
△			
△			

DESIGNED
DESIGN CHECKED
DETAILED
DWG. CHECKED
CORRECTIONS

SCALES SHOWN
ARE FOR 34" X 22"
PRINTS ONLY
CADD FILE NO.
prj00000\bridge\
b02_4b.dgn
DRAWING DATE:
JUNE 2006

ORIGINAL
SIGNED BY:
DATE SIGNED: DATE
ORIGINAL STORED AT: ITO BRIDGE SECTION

IDAHO
TRANSPORTATION
DEPARTMENT



English
PROJECT NO.

UTILITY HANGERS FOR PRESTRESSED GIRDERS

BRIDGE PLANS
BRIDGE LRFD MANUAL,
PAGE B2.4B
COUNTY KEY NO.
BRIDGE DRAWING NO. SHEET
OF