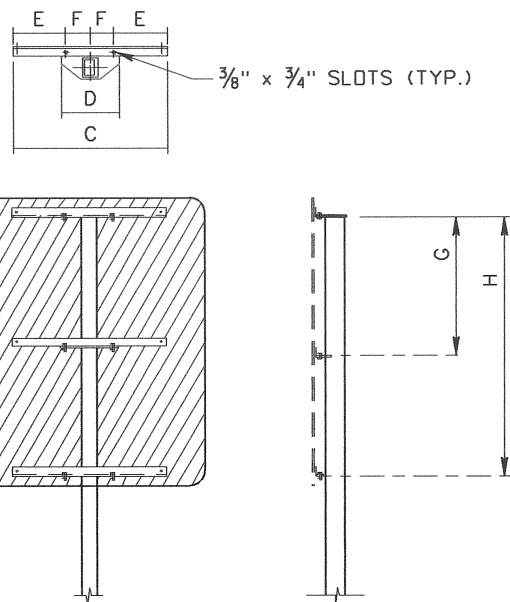


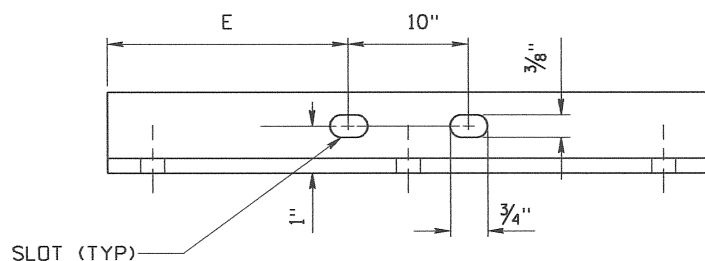
4" x 3" POST SIGN MOUNTING SPACING



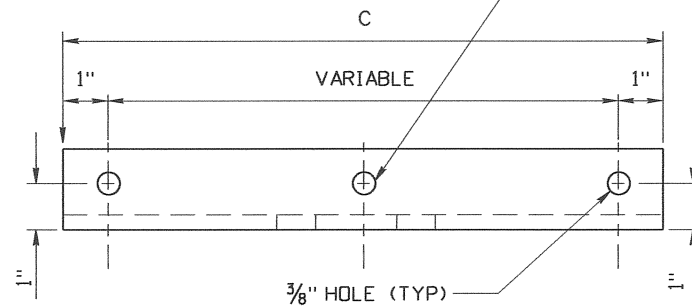
TYPICAL OF SIGN MOUNTS
4" x 3", 5" x 5", 6" x 6" POSTS

SLOT SPACING SPECS. FOR 4"x3" POSTS

SIGN DESCRIPTION	SIGN SIZE		G	H	J	K
	A	B				
STOP	30"	30"	25 1/4"	—	—	28 1/4"
	36"	36"	31 1/4"	—	—	34 1/4"
YIELD	36" TRIANGLE		25 1/4"	—	—	30 1/4"
SQUARE AND RECTANGULAR SIGNS	12"	30"	25 1/4"	—	—	28 1/4"
	24"	36"	—	—	—	—
	24"	30"	19 1/4"	—	—	22 1/4"
	24"	30"	25 1/4"	—	—	28 1/4"
	30"	30"	25 1/4"	—	—	28 1/4"
	30"	36"	31 1/4"	—	—	34 1/4"
	36"	24"	19 1/4"	—	—	22 1/4"
WARNING	18" DIAMOND	—	21 1/4"	—	—	23 1/2"
	30" DIAMOND	—	31 1/4"	—	—	37 1/4"
WARNING & AUXL. SIGNS	30" DIAMOND	—	31 1/4"	—	—	56 1/4"
NO PASS. ZONE	36"x48"x48"	—	19 1/4"	—	—	21 1/2"
TRAIL BLAZER ASSEMBLY	24"	12"	10 1/4"	—	—	—
	24"	24"	—	15 3/4"	33 3/4"	52 3/4"
ADV. ROUTE MARKER ASSY.	24"	24"	19 1/4"	—	—	—
	24"	15"	—	24 3/4"	36 3/4"	38 1/4"
SINGLE JCT. ASSY.	21"	15"	13 1/4"	—	—	39 3/4"
HOSPITAL, CAMPING ASSY.	24"	24"	—	18 3/4"	36 3/4"	—
	24"	6"	—	24 3/4"	27 3/4"	29 1/4"



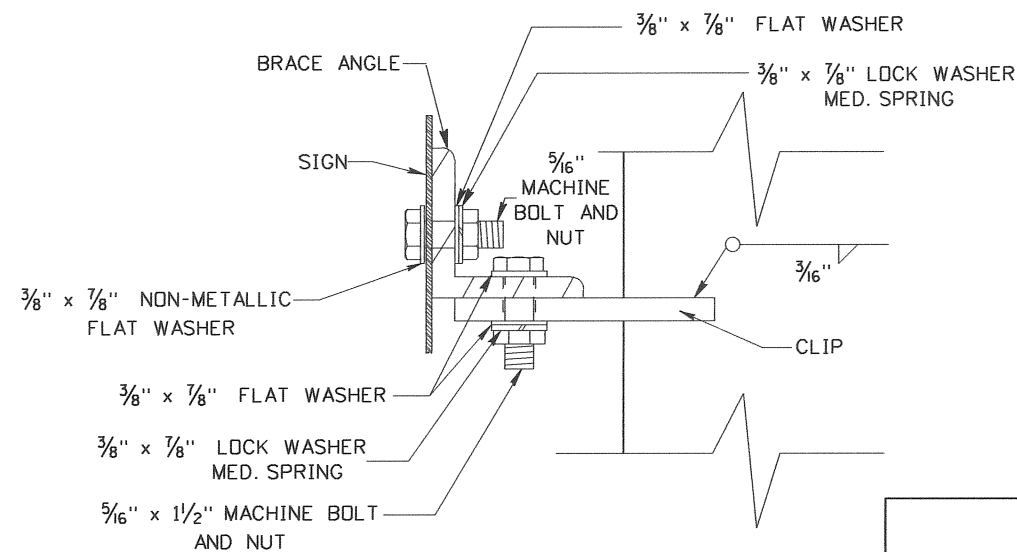
NOTE:
CENTER HOLES IN THE BRACE ANGLES ARE REQUIRED ONLY FOR THOSE SIGNS WHERE "A" > 72".



BRACE ANGLE DETAIL

BRACE ANGLE SPECIFICATIONS FOR 4" X 3", 6" X 4", 8" X 4" POSTS									
SIGN DESCRIPTION	SIGN SIZE		C	D	E	F	G	H	WEIGHT IN LBS.
	A	B							
STOP	36"	36"	32"	12"	11"	5"	30"	—	14.80
	48"	48"	42"	12"	16"	5"	20"	—	19.40
YIELD	60" TRIANGLE		48"	12"	19"	5"	—	—	13.90
	36"	48"	32"	12"	11"	5"	42"	—	14.80
SQUARE AND RECTANGULAR SIGNS	48"	60"	32"	12"	11"	5"	27"	54"	22.20
	36"	36"	32"	12"	11"	5"	30"	—	14.80
	48"	48"	44"	12"	17"	5"	42"	—	22.30
	48"	36"	32"	12"	11"	5"	30"	—	14.80
	72"	36"	62"	12"	26"	5"	18"	—	28.60
	72"	48"	62"	12"	26"	5"	30"	—	28.60
	48"	30"	32"	12"	11"	5"	24"	—	14.80
	72"	30"	62"	12"	26"	5"	24"	—	28.60
	36"	24"	32"	12"	11"	5"	18"	—	14.80
	36"	30"	32"	12"	11"	5"	24"	—	14.80
WARNING & AUXL. SIGNS	36" DIAMOND		26"	12"	8"	5"	16"	—	12.00
	18"	18"	*	*	*	*	*	—	—
	48" DIAMOND		42"	12"	16"	5"	20"	—	19.40
WARNING	24" x 24"		*	*	*	*	*	—	—
	36" DIAMOND		26"	12"	8"	5"	16"	—	12.00
WARNING LARGE ARROW	48" DIAMOND		42"	12"	16"	5"	20"	—	19.40
	48" x 24"		38"	12"	14"	5"	18"	—	17.50
JUNCTION ASSEMBLY	60" x 36"		44"	12"	17"	5"	30"	—	20.40
	21"	15"	*	*	*	*	POST TOP CLIP NOT REQ'D-COVER R ONLY	—	—
SINGLE CARDINAL DIRECT'L ASSY.	2-24" RT. MARK.		27"	12"	8 1/2"	5"	20"	38"	12.50
	30"	15"	26"	12"	8"	5"	—	—	—
JUNCTION ASSEMBLY	36" x 36"		26"	12"	8"	5"	13 1/2"	—	15.20
	—		12"	12"	1"	5"	—	38 1/2"	—
JUNCTION ASSEMBLY	21" x 15"		*	*	*	*	POST TOP CLIP NOT REQ'D-COVER R ONLY	—	—
	3-24" RT. MARK.		54"	12"	21"	5"	20"	38"	25.00

- NOTES:
 1. WEIGHTS OF BRACE ANGLES DO NOT INCLUDE GALVANIZING.
 2. ALL BRACE ANGLES SHALL BE 1 3/4" x 1 3/4" x 1/4" AT 2.77 LBS./FT.
 * 3. THE AUXILIARY SIGNS SHALL BE ATTACHED BY DRILLING THE POST WITH TWO HOLES AND FLUSH MOUNT THE SIGN TO THE FACE OF THE POST.
 4. REFER TO STANDARD DRAWINGS I-8-D-1, I-8-D-2 & I-8-D-3.



BRACE ANGLE ATTACHMENT DETAIL

REVISIONS								
NO.	DATE	BY	NO.	DATE	BY	NO.	DATE	BY
1	08-96	HEB						
2	12-01	NOB						
3	12-07	HEB						
4	07-10	HEB						

SCALES SHOWN ARE FOR 11" X 17" PRINTS ONLY
 CADD FILE NAME: i9a10710.std
 DRAWING DATE: DECEMBER, 2007

IDAHO TRANSPORTATION DEPARTMENT
 BOISE IDAHO



P. Thomas
 ASSISTANT CHIEF ENGINEER (DEVELOPMENT)
 CHIEF ENGINEER

STANDARD DRAWING
 B POST AND BRACE ANGLE DETAIL
 REQUIRES STD. DWG. I-9-A-2

English
 STANDARD DRAWING NO.
 I-9-A-1
 SHEET 1 OF 1

