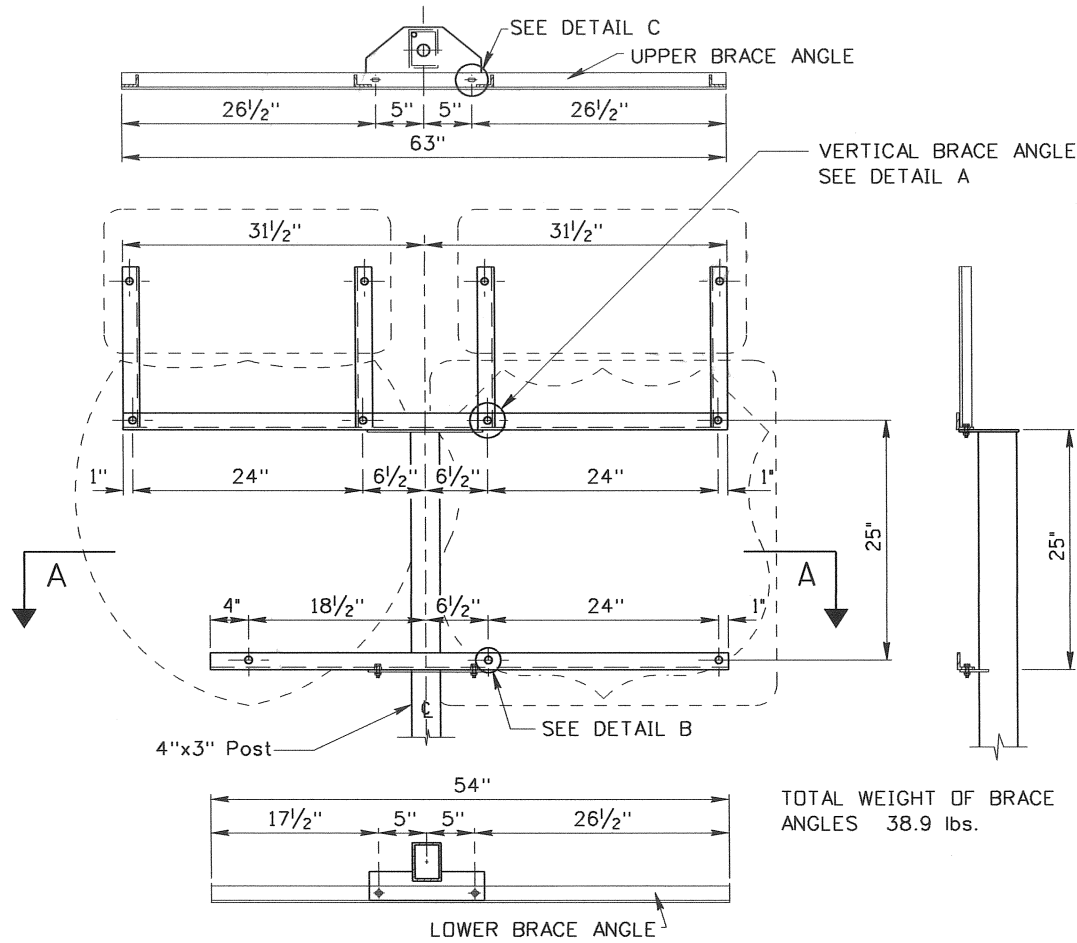
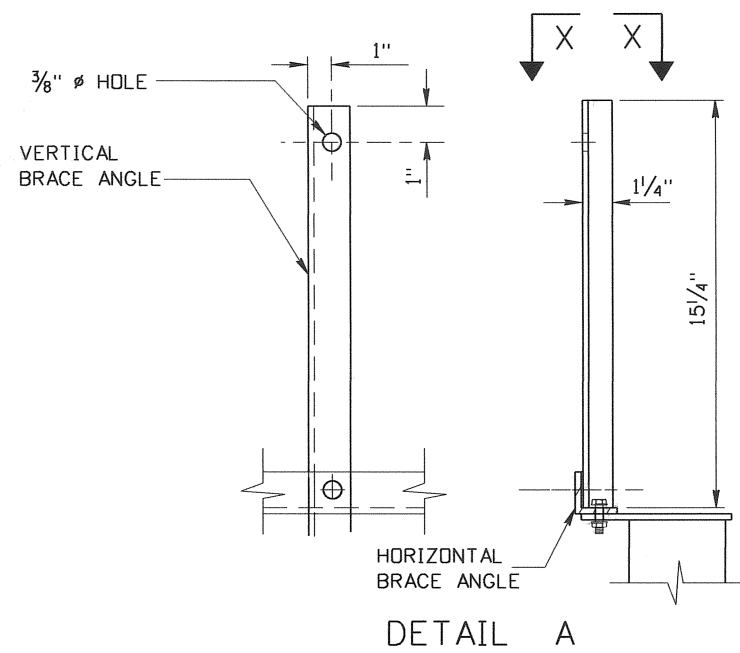


TOP VIEW

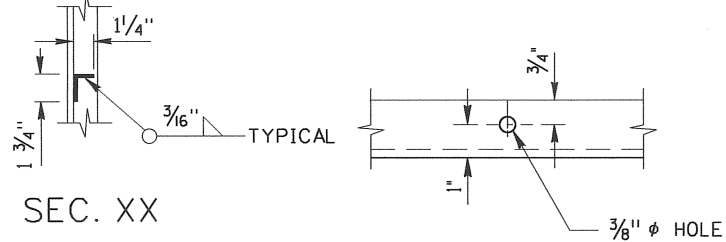


TOTAL WEIGHT OF BRACE ANGLES 38.9 lbs.

SEC. AA



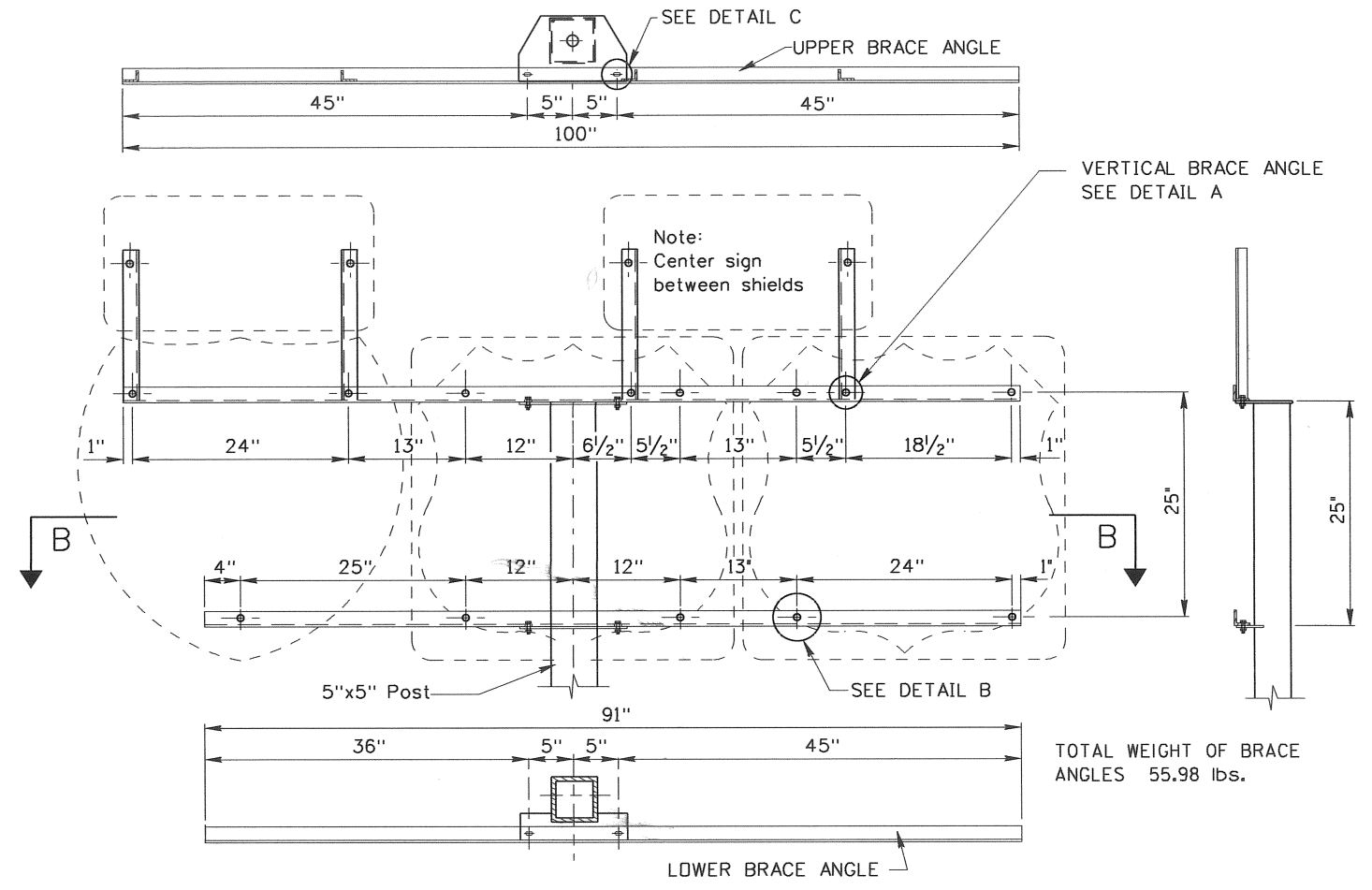
DETAIL A



SEC. XX

DETAIL B

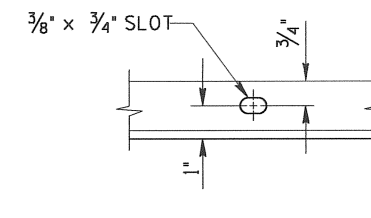
TOP VIEW



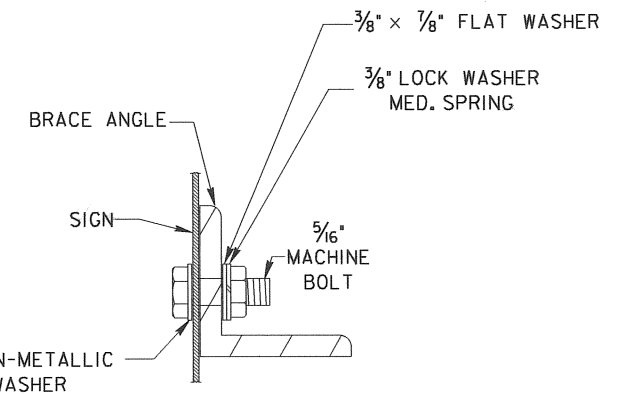
TOTAL WEIGHT OF BRACE ANGLES 55.98 lbs.

SEC. BB

NOTE:
THESE BRACE ANGLE ASSEMBLIES MAY BE MODIFIED TO ACCOMMODATE ADDITIONAL CARDINAL ROUTE MARKERS ABOVE EACH ROUTE SHIELD AS SHOWN ON THE PLANS. CONFIRMING ROUTE MARKERS DO NOT REQUIRE THE VERTICAL BRACE ANGLES.



DETAIL C



TYPICAL SIGN ATTACHMENT DETAIL

NOTES:

1. WEIGHTS OF BRACE ANGLES DO NOT INCLUDE GALVANIZING.
2. ALL BRACE ANGLES SHALL BE 1 3/4" x 1 3/4" x 1/4" AT 2.77 LBS./FT WITH THE EXCEPTION OF THE VERTICAL BRACE ANGLE WHICH SHALL BE 1 3/4" x 1 1/4" x 1/4" AT 2.34 LBS./FT.

REVISIONS								
NO.	DATE	BY	NO.	DATE	BY	NO.	DATE	BY
1	12-01	NOB						
2	07-03	NOB						
3	09-10	HEB						

SCALES SHOWN ARE FOR 11" X 17" PRINTS ONLY
CADD FILE NAME: i9b_0910.std
DRAWING DATE: AUGUST, 1992

IDAHO TRANSPORTATION DEPARTMENT



BOISE IDAHO

R. Thomas
ASSISTANT CHIEF ENGINEER (DEVELOPMENT)
CHIEF ENGINEER

STANDARD DRAWING

CARDINAL ROUTE MARKER ASSEMBLIES

REQUIRES STD. DWG. I-8-D-1, STD. DWG I-8-D-2 & STD. DWG. I-8-D-3

English

STANDARD DRAWING NO.

I-9-B

SHEET 1 OF 1

