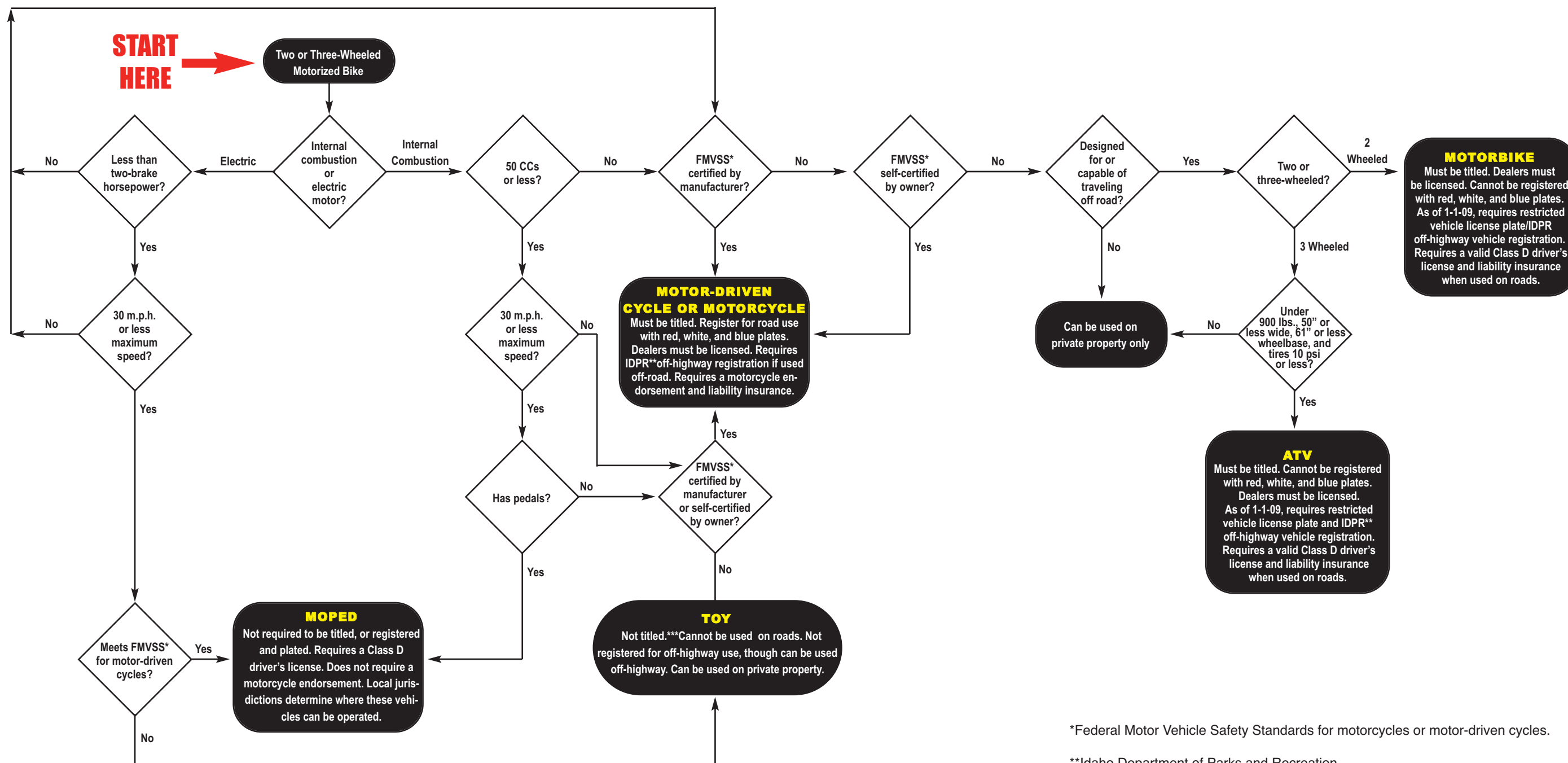




Identification Chart for Motorized Vehicles with Two or Three Wheels



*Federal Motor Vehicle Safety Standards for motorcycles or motor-driven cycles.

**Idaho Department of Parks and Recreation

***If a motorbike is exactly 50 ccs, it must be titled, and can be used off highway, though it can not be registered for highway or off-highway use.