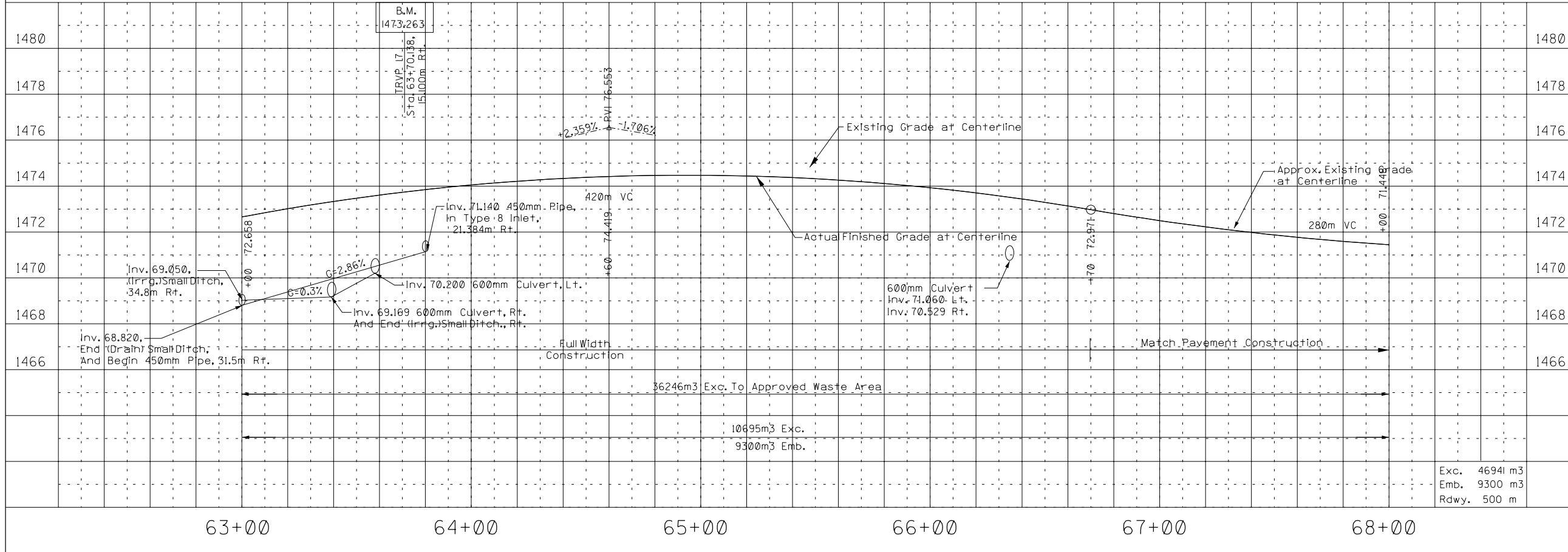



- 202-005A Select Removal of Trees Ea. 9 Ea., Sta. 64+30 Lt., 64+39 Lt., 64+61 Lt., 64+64 Lt., 64+65 Lt., 64+68 Lt., 64+72 Lt., 64+75 Lt., 64+87 Lt.
- 203-005A Removal of Obstructions L.S. 75m, Fence Sta. 63+00, 18m Lt. to 63+62, 32m Lt. 263m, Fence Sta. 63+76, 36m Lt. to 66+23, 12.5m Lt. 33m, Fence Sta. 65+42, 26m Lt. to 65+73, 15m Lt. to 65+80, 38m Lt. 118m, Fence Sta. 65+73, 13m Lt. to 65+93, 17m Lt. 52m, Fence Sta. 67+30, 17m Lt. to 67+82, 17m Lt. 430m, Fence Sta. 63+70, 19m Rt. to 68+00, 20m Rt. 32m, Fence Sta. 65+58, 35m Rt. to 65+85, 19m Rt. 1 Ea. Pipe, Sta. 63+46, Xing 1 Ea. Pipe, Sta. 66+32, Xing 1 Ea. Pipe, Sta. 66+39, Xing 1 Ea. Foundation, Sta. 64+85, 32m Lt. 1 Ea. Approach to R/W Sta. 65+78 Rt. 1 Ea. Approach to R/W Sta. 66+25 Lt.
- 209-005A Small Ditch, m 39m, Sta. 63+00. Rt. to 63+39 Rt.
- 405-245A Approach, EA 1 Ea., Sta. 63+67.8, Rt. W=6.0m Skew 3 59'16" 1 Ea., Sta. 63+67.8, Lt. W=12.0m Skew 3 59'16" 1 Ea., Sta. 67+08, Lt. W=12.0m
- 602-035A 450mm Pipe Culvert, m 81m, Sta. 63+00, 31.3m Rt. to 63+80, 21.4m Rt. 30m, Sta. 67+08, 19.8m Lt.
- 602-045A 600mm Pipe Culvert, m 71m, Sta. 63+39, 37m Rt. to 63+58, 31.5m Lt. 51m, Sta. 66+35, 21m Lt. to 66+35, 30m Rt.
- 605-630A Inlet Type 8, Ea. 1 Ea., Sta. 63+80, 21.4 Rt.
- 608-035A 450mm Apron For Pipe, Ea. 1 Ea., Sta. 63+00 Rt. 2 Ea., Sta. 67+08 Lt.
- 608-045A 600 mm Apron for Pipe, Ea. 2 Ea., Sta. 63+39, Rt. & 63+58 Lt. 2 Ea., Sta. 66+35, Rt. & Lt. (Notes Continued On Next Sheet)



- 1 Adjust/Relocate Power Pole by PacifiCorp at Company Expense
- 1A Adjust/Relocate Power Pole by PacifiCorp at Project Expense
- 2 Adjust/Relocate Tel. Line/Equipment By Qwest at Company Expense

REVISIONS				DESIGNED	IDAHO TRANSPORTATION DEPARTMENT 	PROJECT NO.	PLAN / PROFILE		metric COUNTY Bannock KEY NUMBER 6331 SHEET 21 of 39
NO.	DATE	BY	DESCRIPTION	DESIGN CHECKED		NH-I480 (109)	US-30, McCAMMON TO TOPAZ PASSING LANES		
				DETAILED		IDAHO			
				DRAWING CHECKED					

NOT APPROVED
PRELIMINARY
FOR CONSTRUCTION