

Crashes and Injuries by Month

Table 8 shows the number of crashes and injuries by severity for each month.

Table 8							
Severity of Crashes and Type of Injury by Month: 2008							
	Crashes			Injuries			
	Fatal	Injury	Total	Fatal	Serious	Visible	Possible
January	16	832	3,312	19	124	296	786
February	7	577	2,153	8	81	215	546
March	17	555	1,765	18	105	219	457
April	15	539	1,517	16	96	224	496
May	26	672	1,833	30	117	307	572
June	21	740	1,863	23	145	317	588
July	17	770	1,843	18	163	388	641
August	21	780	1,988	21	179	321	630
September	19	677	1,764	22	132	278	561
October	21	655	1,962	21	119	263	578
November	16	638	1,863	19	121	264	530
December	16	792	3,139	17	121	304	711
Totals	212	8,227	25,002	232	1,503	3,396	7,096

In 2008, May and October had the highest number of fatal crashes. January and December had the highest number of total crashes. Crashes occurring in the winter months are more likely to be attributed to severe weather such as ice and snow; however, these crashes tend to be less severe as people generally slow down and are more cautious when driving in adverse weather conditions.

July, August, and September are typically when the most fatal crashes occur. During this time period in 2008, the price of gas was around \$4 dollars a gallon, subsequently, there were 20 fewer fatal crashes and 865 fewer total crashes than in the same three month period in 2007.

Crashes by Day of the Week

Figures 5 and 6 show the number of fatal and total crashes by day of the week.

Figure 5
Fatal Crashes by Day of the Week: 2008

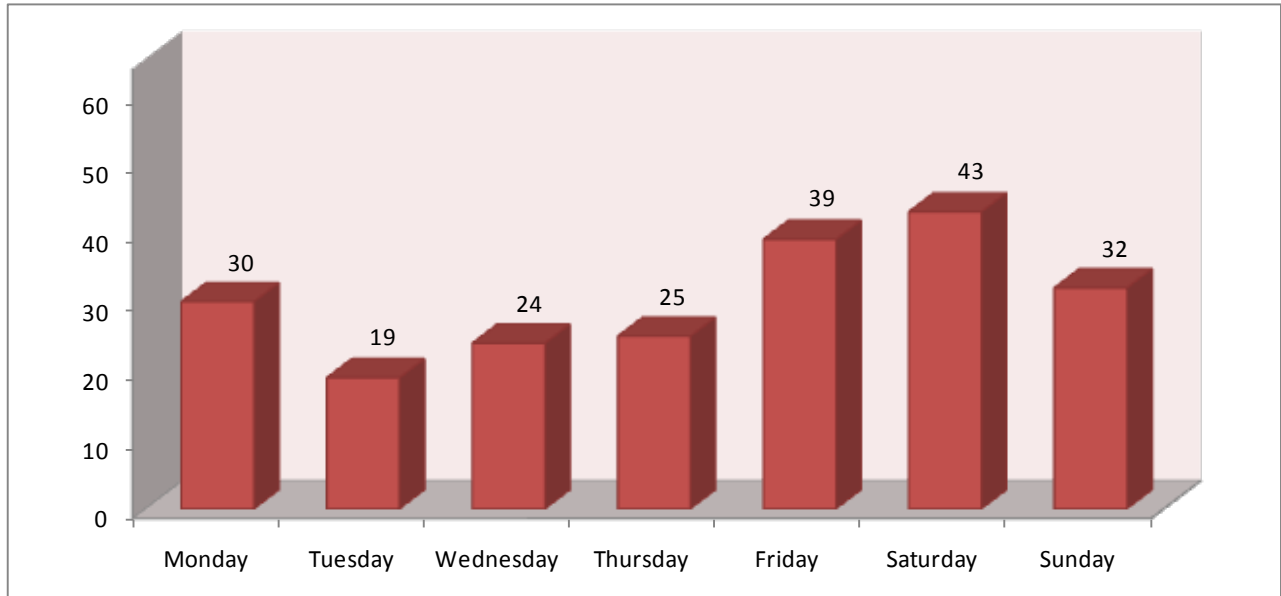
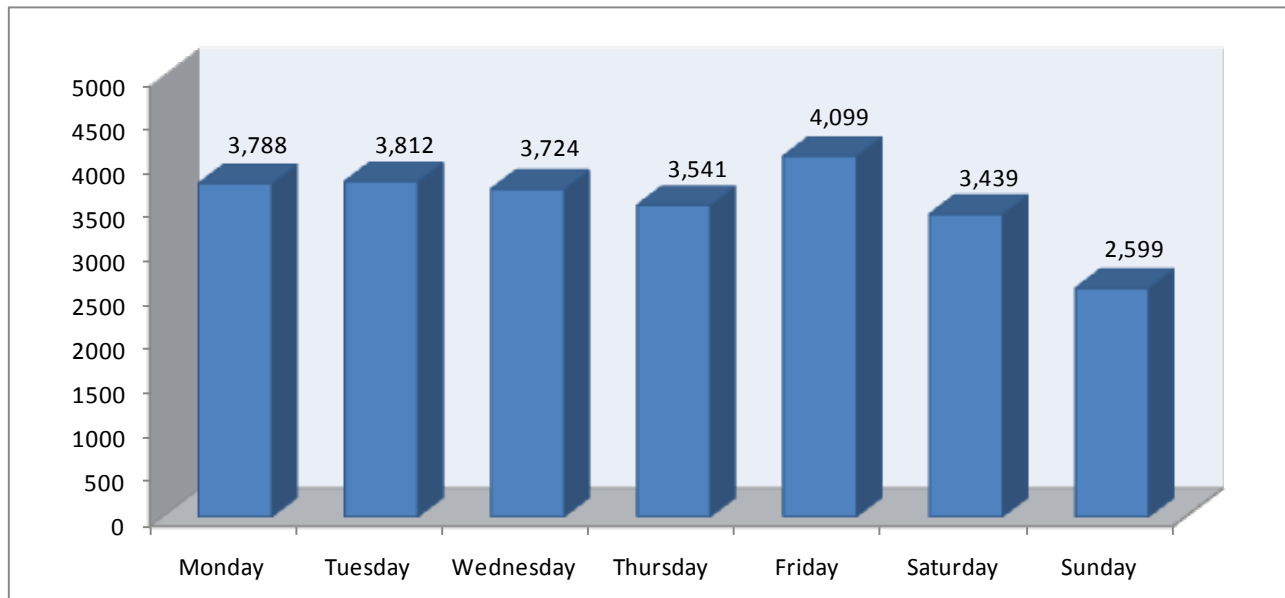


Figure 6
Total Crashes by Day of the Week: 2008



Crashes by Time of Day

Figures 7 and 8 show the number of fatal and total crashes by the time of day.

Figure 7
Fatal Crashes by Time of Day: 2008

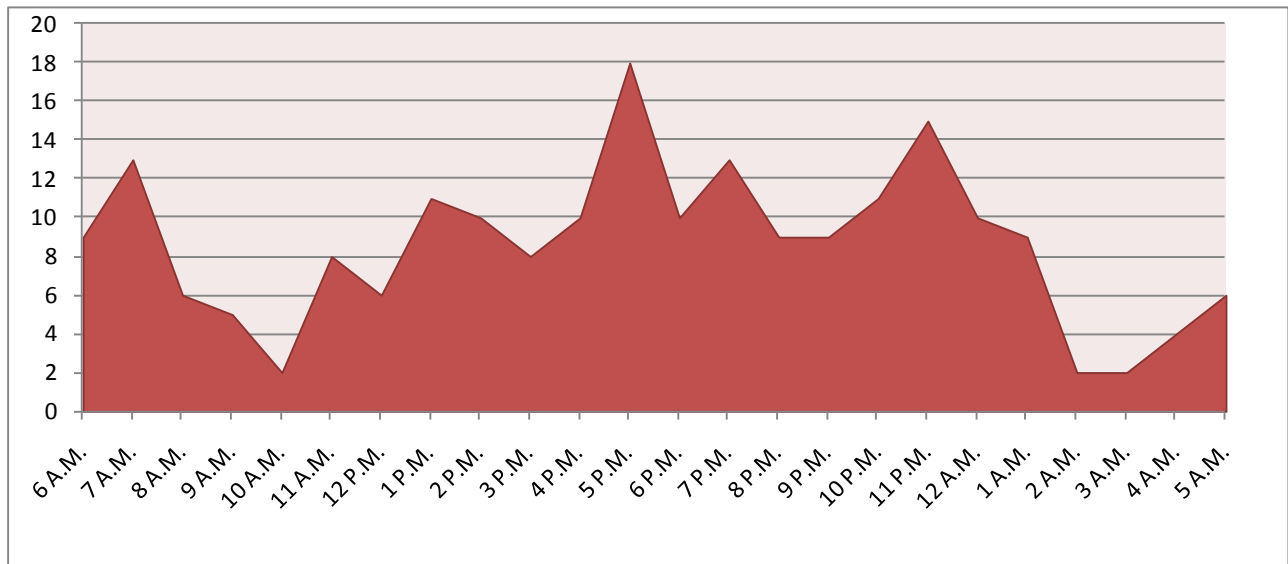


Figure 8
Total Crashes by Time of Day: 2008

