

Crashes and Injuries by Month

Table 8 shows the number of crashes and injuries by severity for each month.

	Fatal Crashes	Injury Crashes	Total Crashes	Fatal Injuries	Serious Injuries	Visible Injuries	Possible Injuries
January	8	551	2,179	11	75	230	515
February	15	507	1,702	17	96	208	414
March	13	579	1,755	17	100	275	481
April	16	590	1,614	17	100	245	518
May	15	699	1,852	18	131	270	550
June	11	677	1,787	12	145	297	543
July	22	747	1,847	26	141	366	613
August	28	801	1,944	29	174	363	632
September	27	727	1,838	29	128	319	591
October	14	648	1,889	17	105	241	593
November	18	616	1,912	19	104	263	548
December	12	719	2,673	14	100	276	643
Totals	199	7,861	22,992	226	1,399	3,353	6,641

In 2009, August and September had the highest number of fatal crashes. January and December had the highest number of total crashes. Crashes occurring in the winter months are more likely to be attributed to severe weather such as ice and snow; however, these crashes tend to be less severe as people generally slow down and are more cautious when driving in adverse weather conditions.

Crashes by Day of the Week

Figures 5 and 6 show the number of fatal and total crashes by day of the week.

Figure 5
Fatal Crashes by Day of the Week: 2009

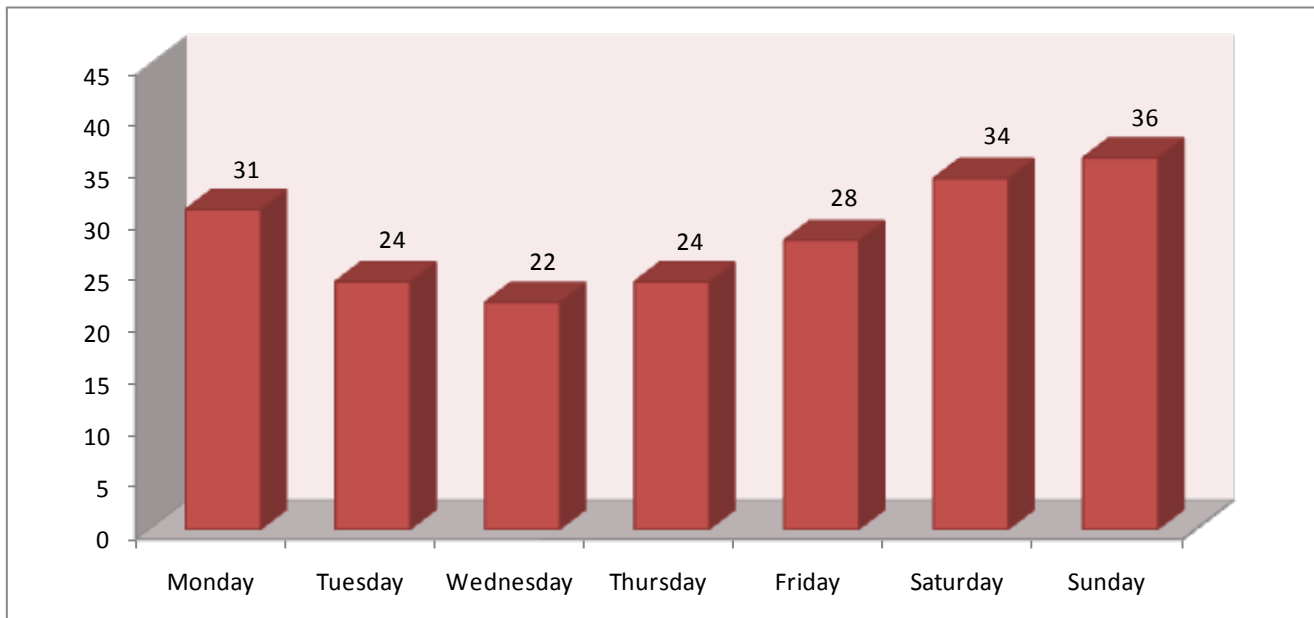
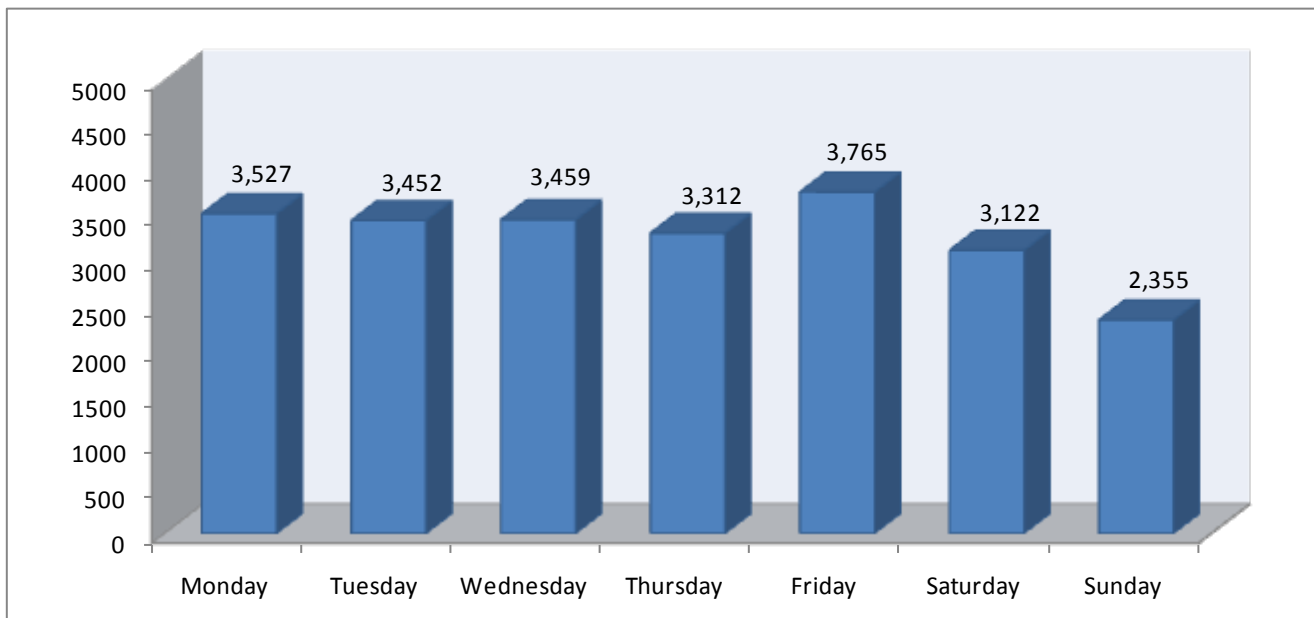


Figure 6
Total Crashes by Day of the Week: 2009



Crashes by Time of Day

Figures 7 and 8 show the number of fatal and total crashes by the time of day.

Figure 7
Fatal Crashes by Time of Day: 2009

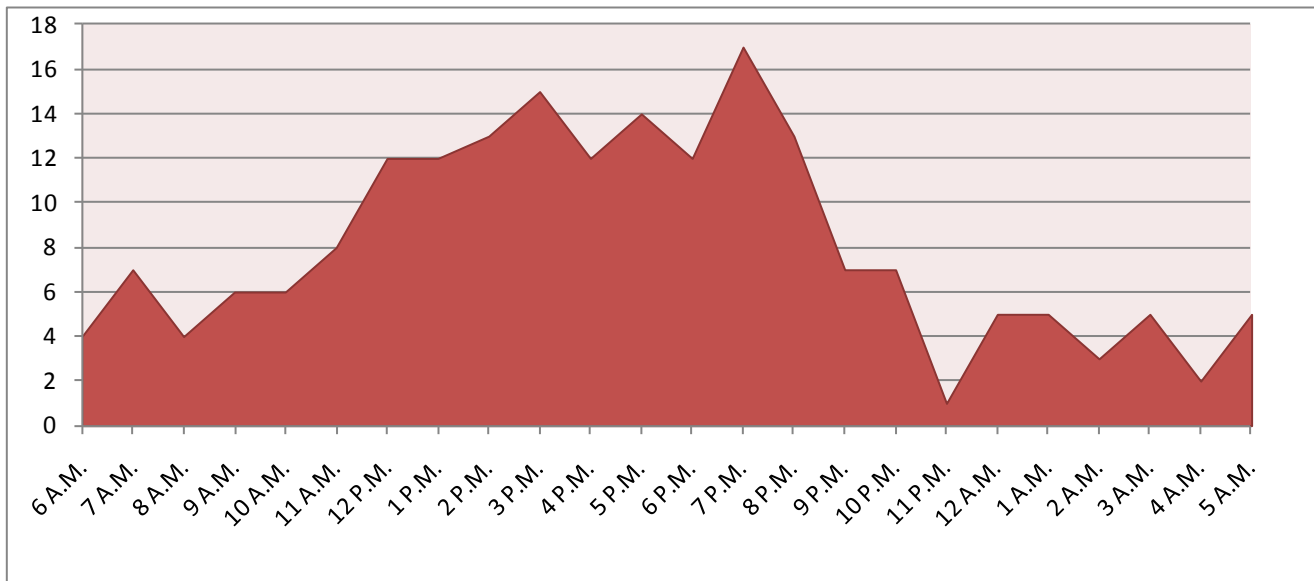


Figure 8
Total Crashes by Time of Day: 2009

