

## Crashes and Injuries by Month

Table 8 shows the number of crashes and injuries by severity for each month.

	<b>Fatal Crashes</b>	<b>Injury Crashes</b>	<b>Total Crashes</b>	<b>Fatal Injuries</b>	<b>Serious Injuries</b>	<b>Visible Injuries</b>	<b>Possible Injuries</b>
January	8	543	1,752	8	71	219	475
February	6	486	1,522	7	74	207	417
March	15	519	1,512	15	94	250	461
April	10	596	1,589	11	96	273	535
May	15	650	1,716	16	128	305	495
June	18	674	1,770	19	143	300	551
July	25	769	1,919	26	177	388	539
August	19	771	1,939	29	187	366	626
September	24	752	1,909	28	143	358	649
October	26	695	1,885	28	102	326	599
November	14	781	2,651	17	80	299	761
December	5	703	2,391	5	101	274	656
<b>Totals</b>	<b>185</b>	<b>7,939</b>	<b>22,555</b>	<b>209</b>	<b>1,396</b>	<b>3,565</b>	<b>6,764</b>

In 2010, October, July, and September had the highest number of fatal crashes. November and December had the highest number of total crashes. Crashes occurring in the winter months are more likely to be attributed to severe weather such as ice and snow; however, these crashes tend to be less severe as people generally slow down and are more cautious when driving in adverse weather conditions.

## Crashes by Day of the Week

Figures 5 and 6 show the number of fatal and total crashes by day of the week.

Figure 5  
Fatal Crashes by Day of the Week: 2010

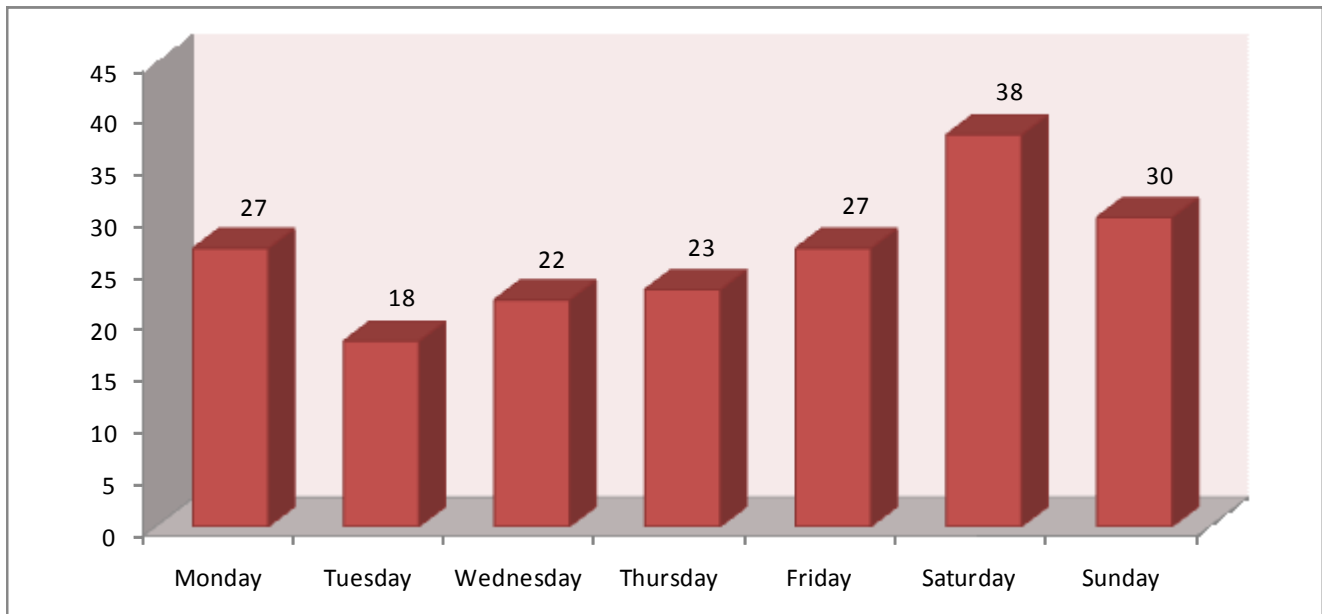
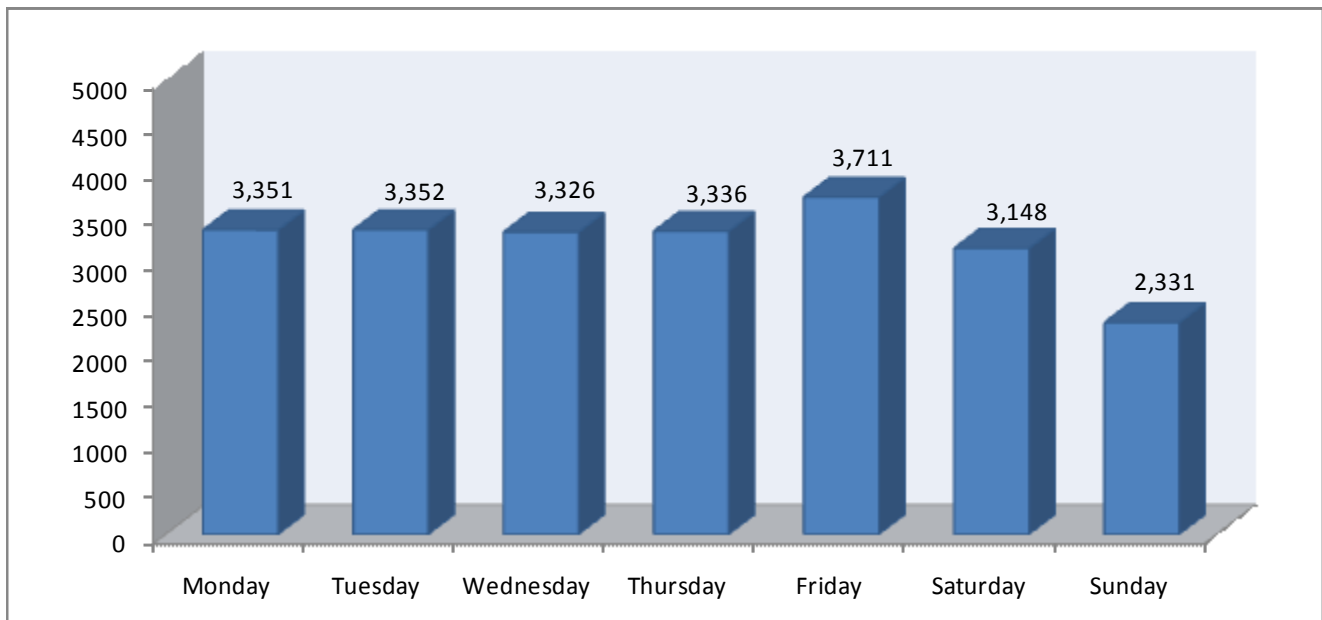


Figure 6  
Total Crashes by Day of the Week: 2010



## Crashes by Time of Day

Figures 7 and 8 show the number of fatal and total crashes by the time of day.

Figure 7  
Fatal Crashes by Time of Day: 2010

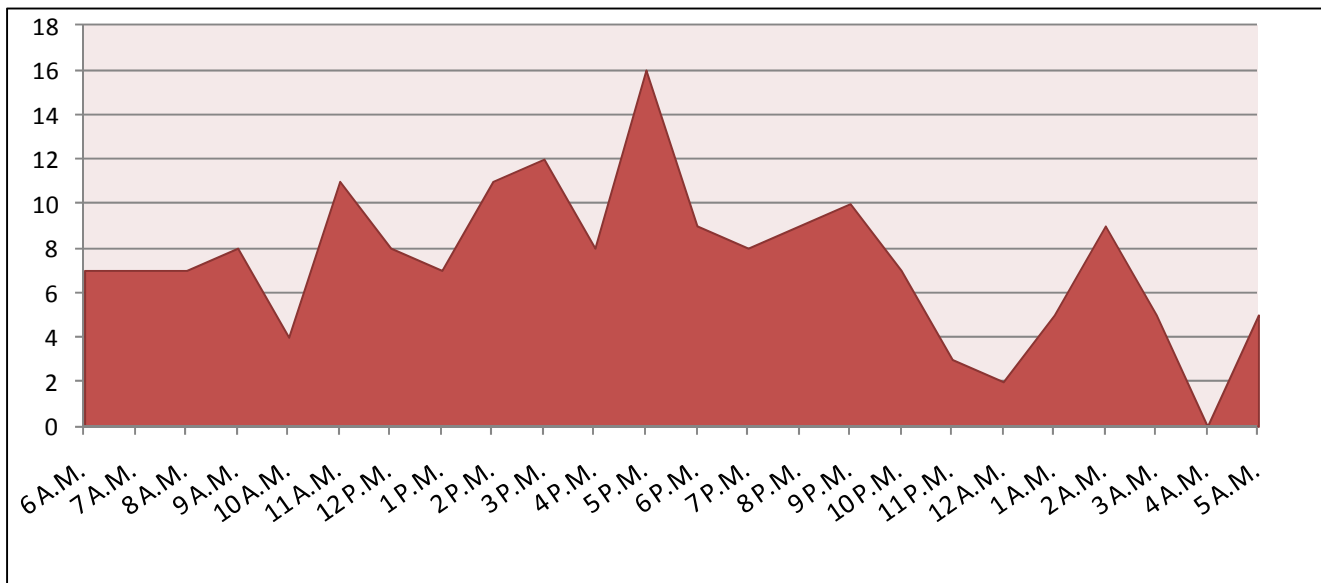


Figure 8  
Total Crashes by Time of Day: 2010

