

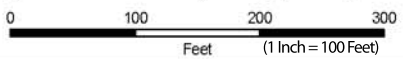
Proposed Improvements

- Legend**
- Improvements to Local Network
 - Frontage / Backage Roads
 - Raised Median
 - Shared Access
 - Consolidate Driveways
 - Install Access on Crossroad
 - Cross Access
 - Align Intersection
 - Potential Traffic Signal
 - Potential Pedestrian Xing Signal



- Legend**
- Stop sign
 - ⊕ Signal
 - ⊗ RR Xing
 - ⚠ Yield
 - 🏠 Garage
 - ⊗ Obstruction
 - ⊗ Fenced
 - ⊗ Gated
 - ▨ Paved
 - ▨ Unpaved
 - Apron
 - Curb Cut
 - Center Line
 - CL-Inv
 - CL-NoPass
 - CL-S
 - Edge Pavement
 - Edge Median
 - Edge Shoulder
 - ◆ Milepost Marker
 - 90'
 - RW
 - Lot Lines
 - Median Center

**US-95 Access Management Plan
ITD Project # A000(968); Key # 09968**



Map 1

MP 59.518 - MP 59.673



HDR ONE COMPANY
Many Solutions™

Imagery Source: Payette County
 Other Data Sources: Idaho Transportation Department, Payette County
 Map Date: Monday, June 8, 2009
 Q:\ITD\US95_AccessManagementPlan\map_docs\MapBook\FIELD.mxd

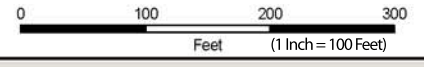
Proposed Improvements

- Legend**
- Improvements to Local Network
 - Frontage / Backage Roads
 - Raised Median
 - ⤴ Shared Access
 - ⊘ Consolidate Driveways
 - ⤴ Install Access on Crossroad
 - ↔ Cross Access
 - ⊘ Align Intersection
 - ⊘ Potential Traffic Signal
 - ⊘ Potential Pedestrian Xing Signal



- Legend**
- | | | | | | | | |
|-------------|---------------|------------|-----------------|-----------------|-------------------|-----|----------------|
| ● Stop sign | ⤴ Garage | ▨ Paved | — Center Line | — Edge Pavement | ● Curb | 90° | — RW Dimension |
| ⊕ Signal | ⊗ Obstruction | ▨ Unpaved | — CL-Inv | — Edge Median | — Edge Shoulder | — | — RW |
| ⊗ RR Xing | ⊗ Fenced | ⊗ Apron | — CL-NoPass | — Lane Line | ◆ Milepost Marker | — | — Lot Lines |
| ⚠ Yield | ⊗ Gated | ⊗ Curb Cut | — CL-S | — LaneLineIn | — | — | — |
| | | | — Median Center | | | | |

US-95 Access Management Plan ITD Project # A000(968); Key # 09968



Map 2

MP 59.673 - MP 59.975

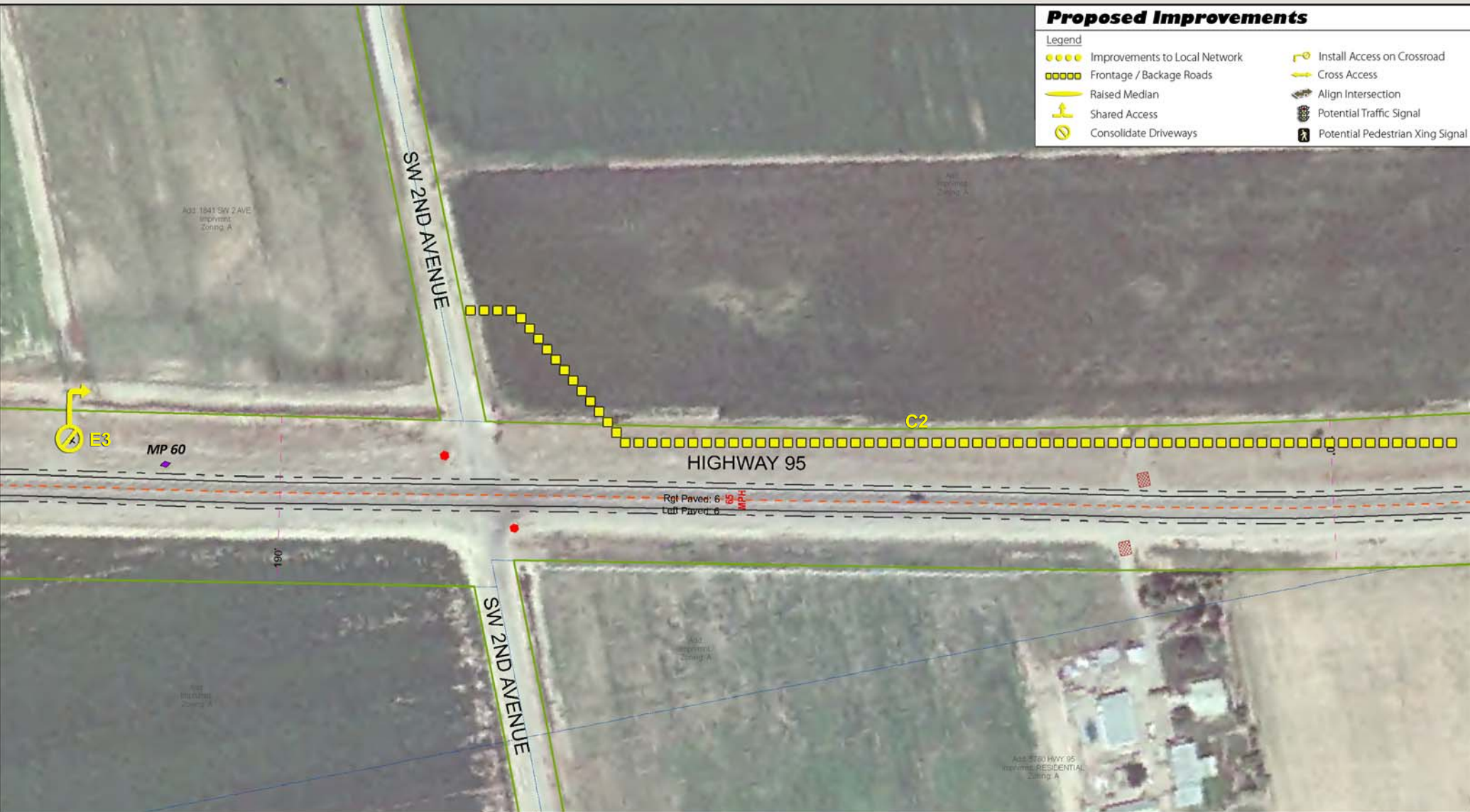
Imagery Source: Payette County
 Other Data Sources: Idaho Transportation Department, Payette County
 Map Date: Monday, June 8, 2009
 Q:\ITDU\95_AccessManagementPlan\map\map_docs\MapBookField.mxd



Proposed Improvements

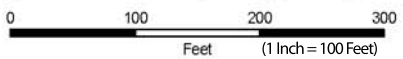
Legend

- Improvements to Local Network
- Frontage / Backage Roads
- Raised Median
- ⤴ Shared Access
- ⊘ Consolidate Driveways
- ⤴ Install Access on Crossroad
- ⤴ Cross Access
- ⤴ Align Intersection
- ⦿ Potential Traffic Signal
- ⦿ Potential Pedestrian Xing Signal



- | Legend | |
|-----------------|-------------------|
| ● Stop sign | ⤴ Garage |
| ⊕ Signal | ⊗ Obstruction |
| ⊗ RR Xing | ⊗ Fenced |
| ⚠ Yield | ⊗ Gated |
| ▨ Paved | ▨ Unpaved |
| ⬢ Apron | ● Curb Cut |
| — Center Line | — Edge Pavement |
| — CL-Inv | — Edge Median |
| — CL-NoPass | — Edge Shoulder |
| — CL-S | ◆ Milepost Marker |
| — LaneLineIn | — LaneLine |
| — Median Center | 90' RW Dimension |
| | — RW |
| | — Lot Lines |

US-95 Access Management Plan ITD Project # A000(968); Key # 09968



Map 3

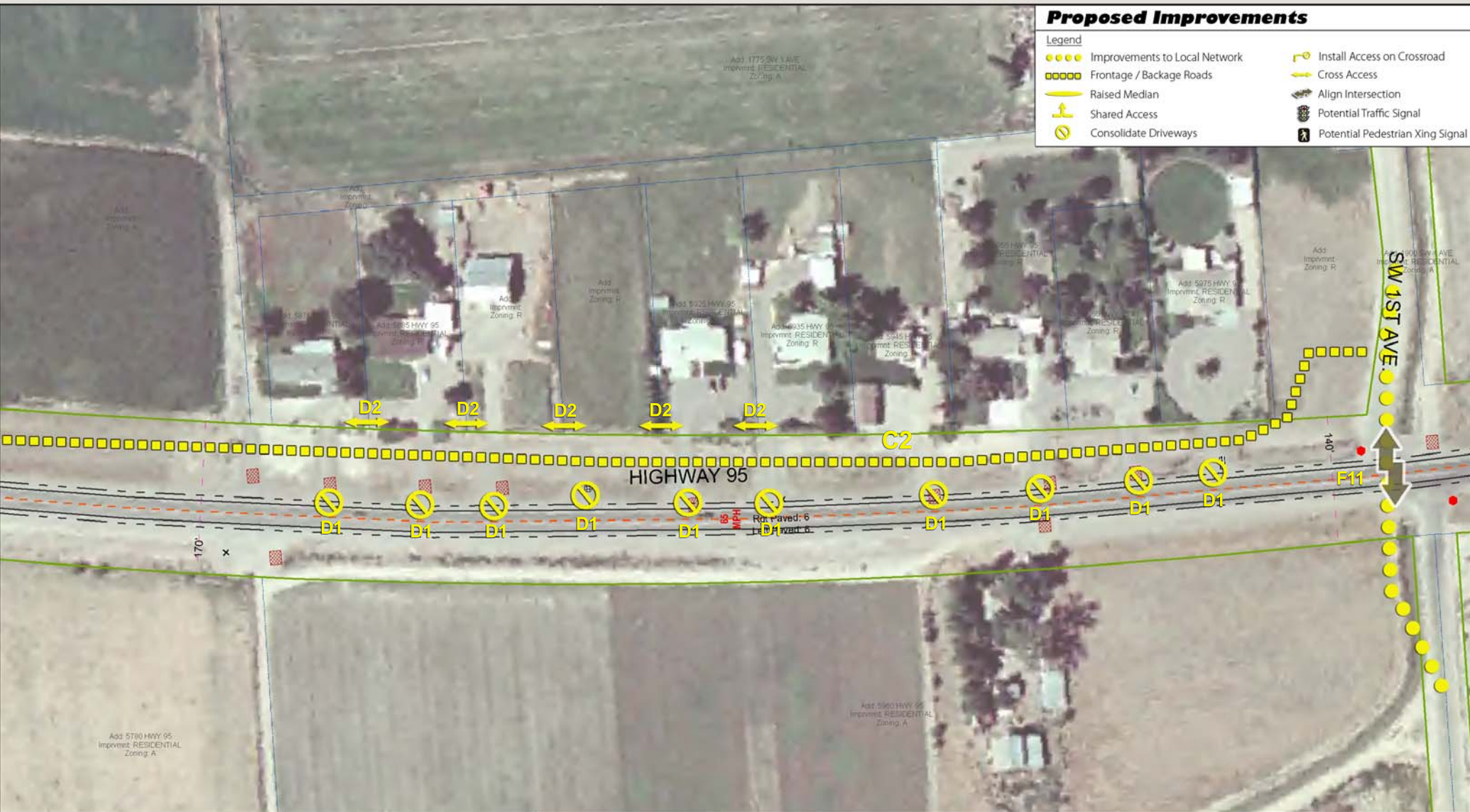
MP 59.975 - MP 60.278

Imagery Source: Payette County
 Other Data Sources: Idaho Transportation Department, Payette County
 Map Date: Monday, June 8, 2009
 Q:\ITD\US95_AccessManagementPlan\map_book\MapBookField.mxd

Proposed Improvements

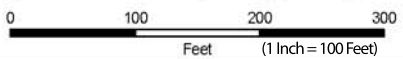
Legend

- Improvements to Local Network
- Frontage / Backage Roads
- Raised Median
- ⤴ Shared Access
- ⊘ Consolidate Driveways
- ↘ Install Access on Crossroad
- ↔ Cross Access
- ⚡ Align Intersection
- ⚡ Potential Traffic Signal
- ⚡ Potential Pedestrian Xing Signal



Legend	
● Stop sign	⚡ Garage
⊕ Signal	⊗ Obstruction
⊗ RR Xing	⊗ Fenced
⚠ Yield	⊗ Gated
▬ Paved	▬ Unpaved
▬ Apron	▬ Curb Cut
— Center Line	— Edge Pavement
— CL-Inv	— Edge Median
— CL-NoPass	— Edge Shoulder
— CL-S	— LaneLineIn
— LaneLineIn	— Median Center
— Curb	— Milepost Marker
— Edge Shoulder	— Lot Lines
— RW	— 90' RW Dimension

US-95 Access Management Plan ITD Project # A000(968); Key # 09968



Map 4

MP 60.279 - MP 60.576

Imagery Source: Payette County
Other Data Sources: Idaho Transportation Department, Payette County
Map Date: Monday, June 8, 2009
Q:\ITD\US95_AccessManagementPlan\map_docs\MapBookField.mxd



Proposed Improvements

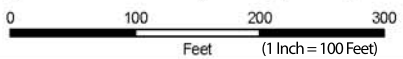
Legend

- Improvements to Local Network
- Frontage / Backage Roads
- Raised Median
- ⤴ Shared Access
- ⊘ Consolidate Driveways
- ⤴ Install Access on Crossroad
- ⤴ Cross Access
- ⤴ Align Intersection
- ⊘ Potential Traffic Signal
- ⊘ Potential Pedestrian Xing Signal



- Legend**
- Stop sign
 - + Signal
 - X RR Xing
 - ▽ Yield
 - ⊘ Garage
 - ⊘ Obstruction
 - ⊘ Fenced
 - ⊘ Gated
 - ⊘ Apron
 - ⊘ Curb Cut
 - Paved
 - Unpaved
 - Center Line
 - CL-Inv
 - CL-NoPass
 - CL-S
 - Edge Pavement
 - Edge Median
 - Edge Shoulder
 - Lane Line
 - LaneLineIn
 - Curb
 - Milepost Marker
 - 90'
 - RW Dimension
 - RW
 - Lot Lines
 - Median Center

US-95 Access Management Plan ITD Project # A000(968); Key # 09968



Map 5

MP 60.576 - MP 60.886

Imagery Source: Payette County
 Other Data Sources: Idaho Transportation Department, Payette County
 Map Date: Monday, June 8, 2009
 Q:\ITD\US95_AccessManagementPlan\map_book\MapBookField.mxd