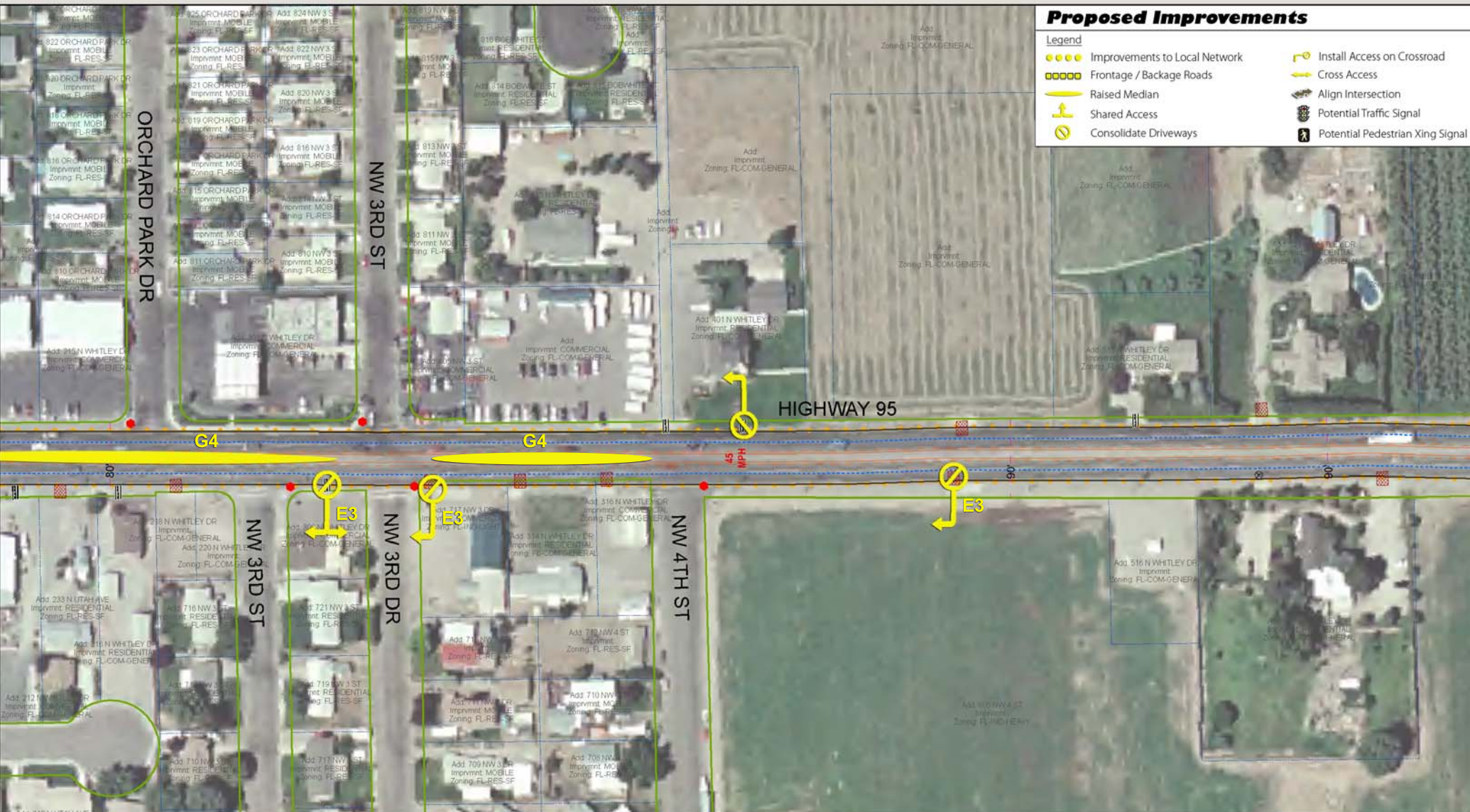


### Proposed Improvements

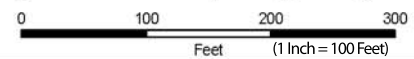
#### Legend

- Improvements to Local Network
- Frontage / Backage Roads
- Raised Median
- Shared Access
- Consolidate Driveways
- Install Access on Crossroad
- Cross Access
- Align Intersection
- Potential Traffic Signal
- Potential Pedestrian Xing Signal



Legend	
Stop sign	Garage
Signal	Obstruction
RR Xing	Fenced
Yield	Gated
Paved	Center Line
Unpaved	Edge Pavement
Apron	CL-Inv
Curb Cut	CL-NoPass
Median Center	Lane Line
Edge Median	LaneLineIn
Edge Shoulder	Milepost Marker
RW	Lot Lines
RW Dimension	

## US-95 Access Management Plan ITD Project # A000(968); Key # 09968



# Map 16

MP 64.146 - MP 64.449

Imagery Source: Payette County  
Other Data Sources: Idaho Transportation Department, Payette County  
Map Date: Monday, June 8, 2009  
Q:\ITD\US95\_AccessManagementPlan\map\_docs\MapBookField.mxd





### Proposed Improvements

**Legend**

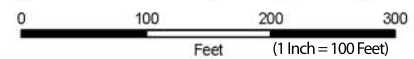
- Improvements to Local Network
- Frontage / Backage Roads
- Raised Median
- ⊥ Shared Access
- ⊘ Consolidate Driveways
- ⤴ Install Access on Crossroad
- ↔ Cross Access
- ⊕ Align Intersection
- ⚡ Potential Traffic Signal
- ⚠ Potential Pedestrian Xing Signal

**Legend**

● Stop sign	⚡ Garage	▨ Paved	— Center Line	— Edge Pavement	● Curb	90°	— RW Dimension
⊕ Signal	⊗ Obstruction	▨ Unpaved	— CL-Inv	— Edge Median	— Edge Shoulder	— RW	
⊗ RR Xing	⊗ Fenced	⊗ Apron	— CL-NoPass	— Lane Line	◆ Milepost Marker	— Lot Lines	
▽ Yield	⊗ Gated	● Curb Cut	— CL-S	— LaneLineIn			
			— Median Center				

## US-95 Access Management Plan

### ITD Project # A000(968); Key # 09968



# Map 18

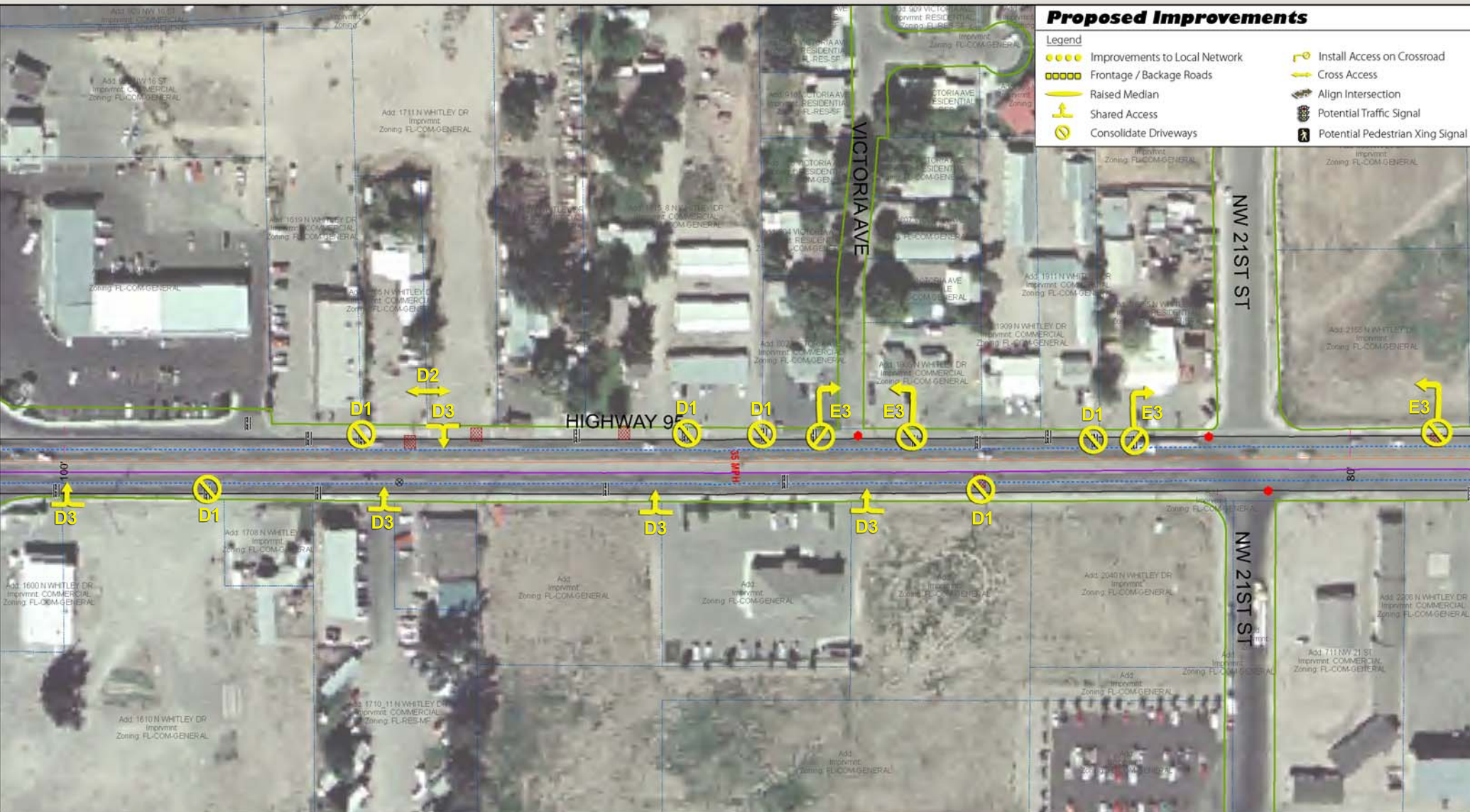
MP 64.751 - MP 65.053

Imagery Source: Payette County  
 Other Data Sources: Idaho Transportation Department, Payette County  
 Map Date: Monday, June 6, 2009  
 Q:\ITD\US95\_AccessManagementPlan\map\_book\MapBookField.mxd

### Proposed Improvements

#### Legend

- Improvements to Local Network
- Frontage / Backage Roads
- Raised Median
- Shared Access
- Consolidate Driveways
- Install Access on Crossroad
- Cross Access
- Align Intersection
- Potential Traffic Signal
- Potential Pedestrian Xing Signal

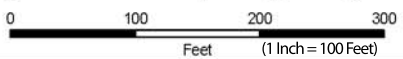


Legend	
Stop sign	Garage
Signal	Obstruction
RR Xing	Fenced
Yield	Gated
Paved	Center Line
Unpaved	Edge Pavement
Apron	CL-Inv
Curb Cut	CL-NoPass
Median Center	Lane Line
Edge Median	LaneLineIn
Edge Shoulder	Milepost Marker
90' RW Dimension	Lot Lines

## US-95 Access Management Plan ITD Project # A000(968); Key # 09968



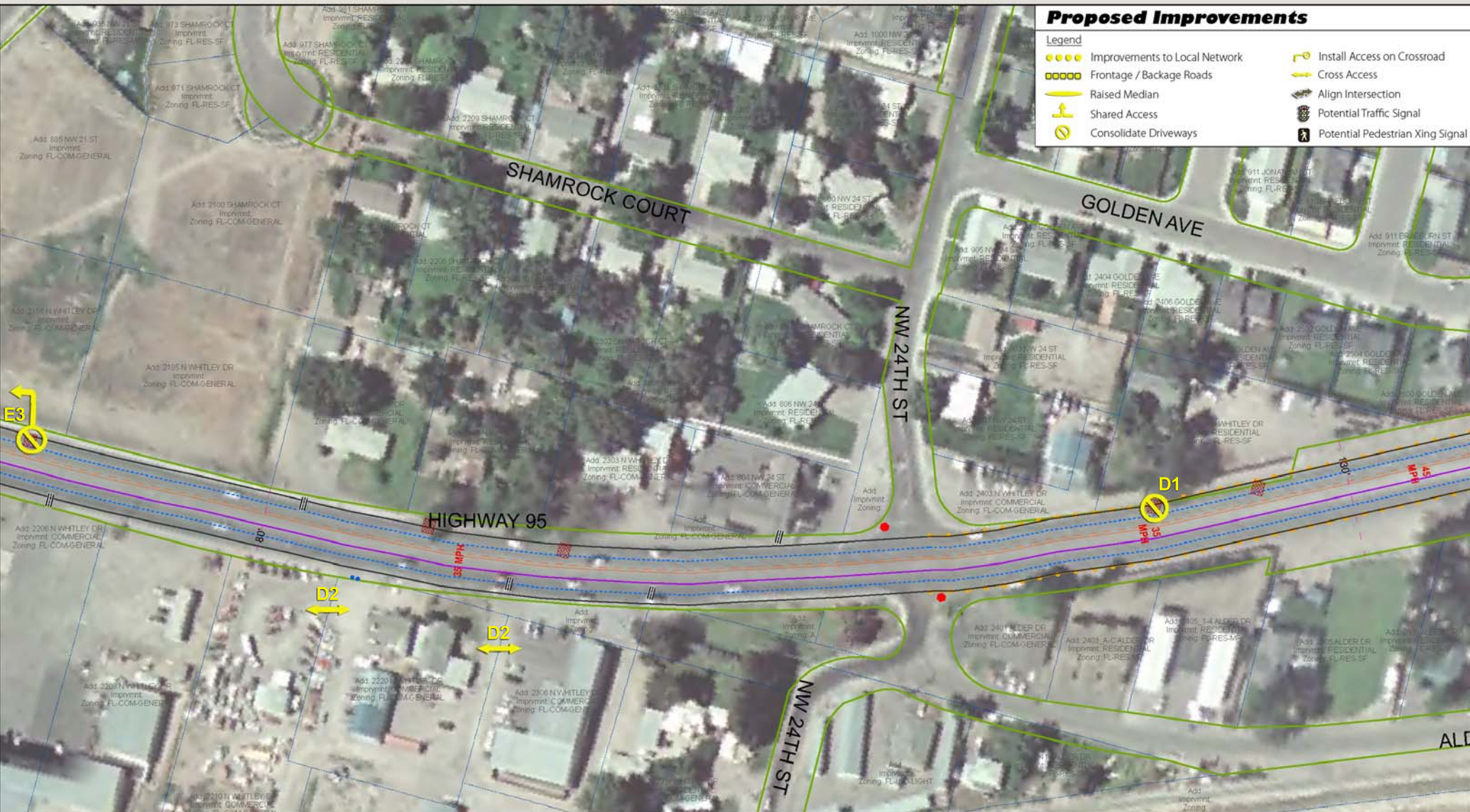
**HDR** ONE COMPANY  
Many Solutions™



# Map 19

**MP 65.053 - MP 65.358**

Imagery Source: Payette County  
Other Data Sources: Idaho Transportation Department, Payette County  
Map Date: Monday, June 8, 2009  
Q:\ITD\US95\_AccessManagementPlan\map\_book\MapBookField.mxd



### Proposed Improvements

Legend			
●●●●	Improvements to Local Network	🚧	Install Access on Crossroad
□□□□	Frontage / Backage Roads	↔	Cross Access
—	Raised Median	🚦	Align Intersection
🚶	Shared Access	🚦	Potential Traffic Signal
🚧	Consolidate Driveways	🚶	Potential Pedestrian Xing Signal

### Legend

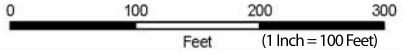
●	Stop sign	🚗	Garage	▨	Paved	—	Center Line	—	Edge Pavement	●	Curb	90°	R/W Dimension
+	Signal	⊗	Obstruction	▨	Unpaved	—	CL-Inv	—	Edge Median	—	Edge Shoulder	—	R/W
✕	RR Xing	⊗	Fenced	▨	Apron	—	CL-NoPass	—	Lane Line	—	Milepost Marker	—	Lot Lines
▽	Yield	⊗	Gated	●	Curb Cut	—	CL-S	—	LaneLineIn	—	Median Center	—	

## US-95 Access Management Plan

### ITD Project # A000(968); Key # 09968



**HDR** ONE COMPANY  
Many Solutions™



# Map 20

**MP 65.358 - MP 65.667**

Imagery Source: Payette County  
 Other Data Sources: Idaho Transportation Department, Payette County  
 Map Date: Monday, June 8, 2009  
 Q:\ITD\US95\_AccessManagementPlan\map.docx\MapBookField.mxd