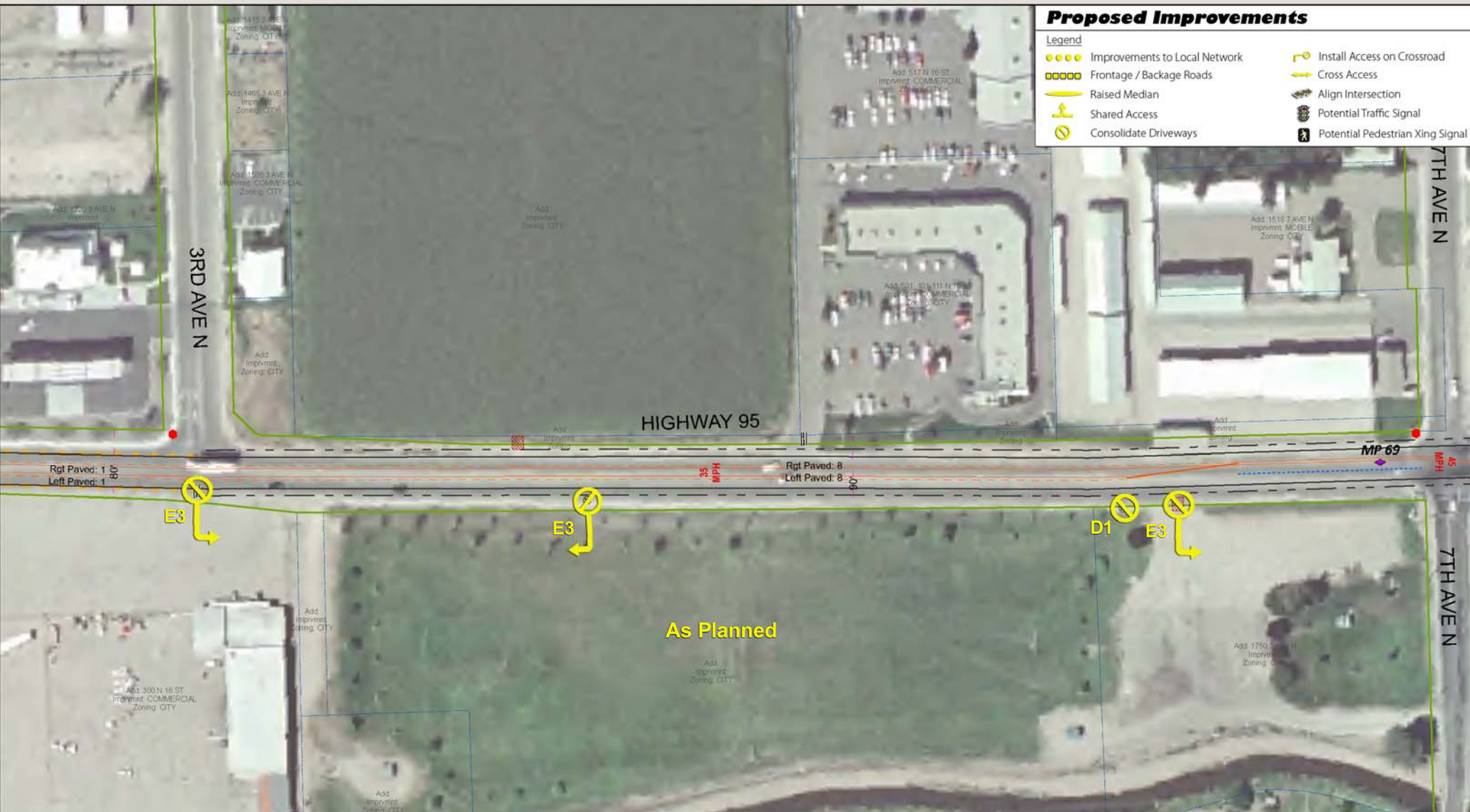


### Proposed Improvements

#### Legend

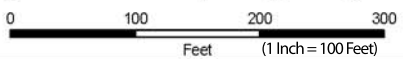
- Improvements to Local Network
- Frontage / Backage Roads
- Raised Median
- ⤴ Shared Access
- ⊘ Consolidate Driveways
- ↘ Install Access on Crossroad
- ↔ Cross Access
- ⊕ Align Intersection
- ⚡ Potential Traffic Signal
- ⚠ Potential Pedestrian Xing Signal



As Planned

Legend	
● Stop sign	⊕ Signal
⊗ Obstruction	⊗ RR Xing
⊗ Gated	⚠ Yield
▨ Paved	▨ Unpaved
⬮ Apron	● Curb Cut
— Center Line	— Edge Pavement
— CL-Inv	— Edge Median
— CL-NoPass	— Lane Line
— CL-S	— LaneLineIn
— Median Center	— Curb
— 90' RW Dimension	— Edge Shoulder
— RW	— Lot Lines
◆ Milepost Marker	

## US-95 Access Management Plan ITD Project # A000(968); Key # 09968



# Map 31

MP 68.715 - MP 69.015

Imagery Source: Payette County  
Other Data Sources: Idaho Transportation Department, Payette County  
Map Date: Monday, June 8, 2009  
Q:\ITD\US95\_AccessManagementPlan\map\_docs\MapBookField.mxd



### Proposed Improvements

#### Legend

- Improvements to Local Network
- Frontage / Backage Roads
- Raised Median
- ⊥ Shared Access
- ⊙ Consolidate Driveways
- ⊥ Install Access on Crossroad
- ⊥ Cross Access
- ⊥ Align Intersection
- ⊥ Potential Traffic Signal
- ⊥ Potential Pedestrian Xing Signal

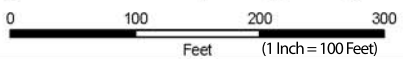


Legend	
● Stop sign	⊥ Garage
⊕ Signal	⊗ Obstruction
⊗ RR Xing	⊗ Fenced
⊕ Yield	⊗ Gated
▨ Paved	▨ Unpaved
▨ Apron	● Curb Cut
— Center Line	— Edge Pavement
— CL-Inv	— Edge Median
— CL-NoPass	— Edge Shoulder
— CL-S	◆ Milepost Marker
— LaneLineIn	— Lot Lines
— Median Center	— RW Dimension

## US-95 Access Management Plan ITD Project # A000(968); Key # 09968



**HDR** ONE COMPANY  
Many Solutions™



# Map 32

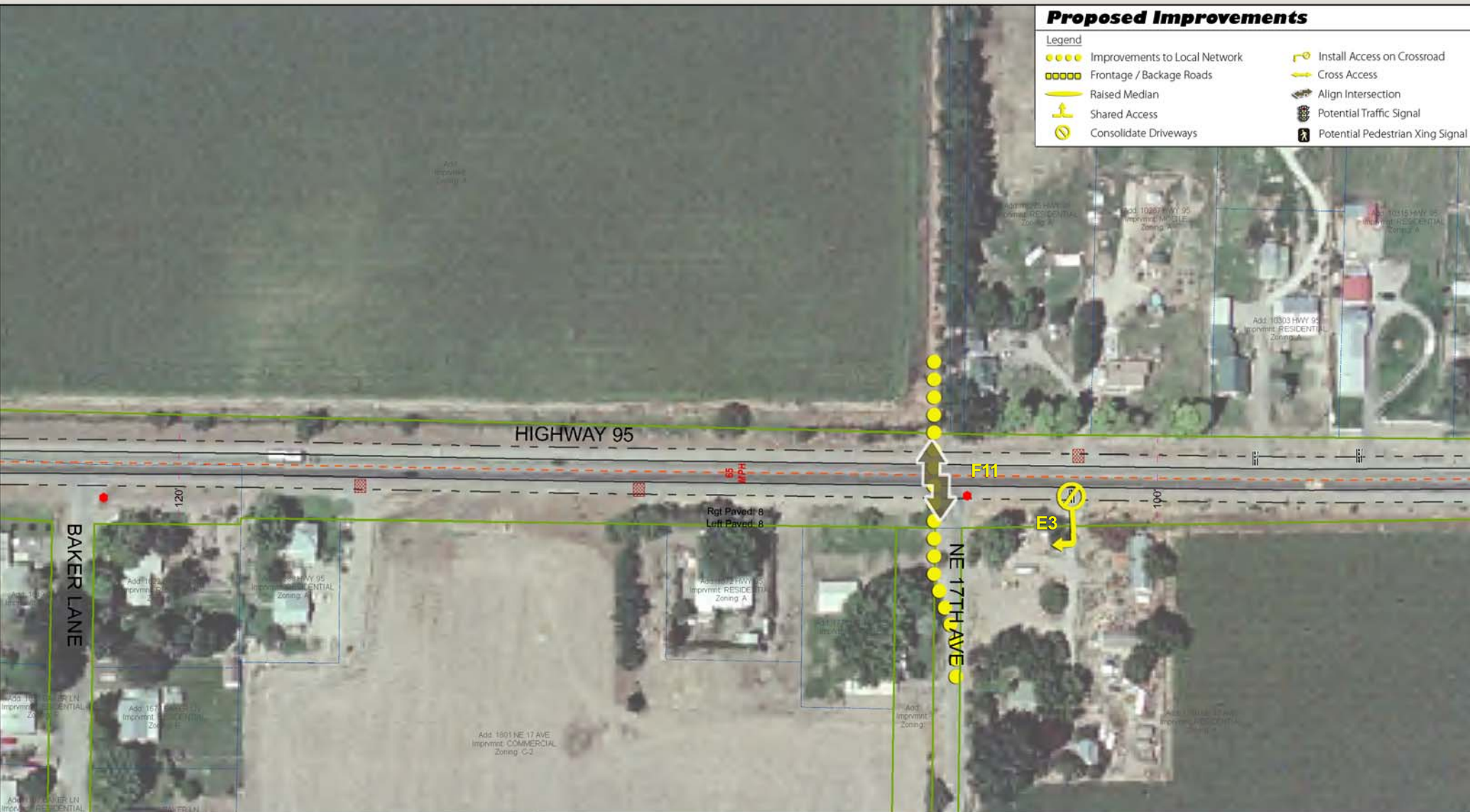
**MP 69.015 - MP 69.316**

Imagery Source: Payette County  
Other Data Sources: Idaho Transportation Department, Payette County  
Map Date: Monday, June 8, 2009  
Q:\ITD\US95\_AccessManagement\Plan\map\_book\MapBookField.mxd

### Proposed Improvements

#### Legend

- Improvements to Local Network
- Frontage / Backage Roads
- Raised Median
- Shared Access
- Consolidate Driveways
- Install Access on Crossroad
- Cross Access
- Align Intersection
- Potential Traffic Signal
- Potential Pedestrian Xing Signal

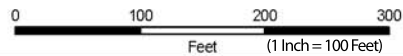


Legend	
Stop sign	Garage
Signal	Obstruction
RR Xing	Fenced
Yield	Gated
Paved	Center Line
Unpaved	Edge Pavement
Apron	CL-Inv
Curb Cut	CL-NoPass
Median Center	Lane Line
Edge Median	LaneLineIn
Edge Shoulder	Milepost Marker
Curb	Lot Lines
90' RW Dimension	

## US-95 Access Management Plan ITD Project # A000(968); Key # 09968



**HDR** ONE COMPANY  
Many Solutions™



### Map 33

MP 69.316 - MP 69.621

Imagery Source: Payette County  
Other Data Sources: Idaho Transportation Department, Payette County  
Map Date: Monday, June 8, 2009  
Q:\ITD\US95\_AccessManagementPlan\map\_book\MapBookField.mxd



### Proposed Improvements

**Legend**

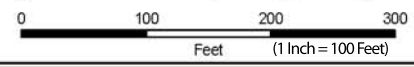
- Improvements to Local Network
- Frontage / Backage Roads
- Raised Median
- Shared Access
- Consolidate Driveways
- Install Access on Crossroad
- Cross Access
- Align Intersection
- Potential Traffic Signal
- Potential Pedestrian Xing Signal

**Legend**

Stop sign	Garage	Paved	Center Line	Edge Pavement	Curb	90'	R/W Dimension
Signal	Obstruction	Unpaved	CL-Inv	Edge Median	Edge Shoulder	R/W	
RR Xing	Fenced	Apron	CL-NoPass	Lane Line	Milepost Marker	Lot Lines	
Yield	Gated	Curb Cut	CL-S	LaneLineIn			
			Median Center				

## US-95 Access Management Plan

### ITD Project # A000(968); Key # 09968



# Map 34

**MP 69.621 - MP 69.924**

Imagery Source: Payette County  
 Other Data Sources: Idaho Transportation Department, Payette County  
 Map Date: Monday, June 8, 2009  
 Q:\ITD\US95\_AccessManagementPlan\map\_book\MapBookField.mxd

### Proposed Improvements

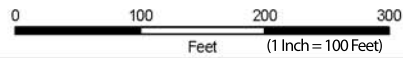
#### Legend

- Improvements to Local Network
- Frontage / Backage Roads
- Raised Median
- Shared Access
- Consolidate Driveways
- Install Access on Crossroad
- Cross Access
- Align Intersection
- Potential Traffic Signal
- Potential Pedestrian Xing Signal



## US-95 Access Management Plan ITD Project # A000(968); Key # 09968

Legend	
Stop sign	Garage
Signal	Obstruction
RR Xing	Fenced
Yield	Apron
Curb Cut	Median Center
Paved	Center Line
Unpaved	Edge Pavement
Curb	CL-Inv
Edge Shoulder	CL-NoPass
Edge Shoulder	Lane Line
Milepost Marker	CL-S
LaneLineIn	LaneLineIn
Lot Lines	90' RW Dimension
Lot Lines	RW



# Map 35



**HDR** ONE COMPANY  
Many Solutions™

**MP 69.925 - MP 70.228**

Imagery Source: Payette County  
Other Data Sources: Idaho Transportation Department, Payette County  
Map Date: Monday, June 8, 2009  
Q:\ITD\US95\_AccessManagementPlan\map\_docs\MapBookField.mxd



### Proposed Improvements

**Legend**

- Improvements to Local Network
- Frontage / Backage Roads
- Raised Median
- Shared Access
- Consolidate Driveways
- Install Access on Crossroad
- Cross Access
- Align Intersection
- Potential Traffic Signal
- Potential Pedestrian Xing Signal

**Legend**

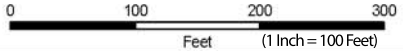
● Stop sign	⊗ Garage	▨ Paved	— Center Line	— Edge Pavement	— Curb	90°	— RW Dimension
⊕ Signal	⊗ Obstruction	▨ Unpaved	— CL-Inv	— Edge Median	— Edge Shoulder	— RW	
⊗ RR Xing	⊗ Fenced	⊗ Apron	— CL-NoPass	— Lane Line	◆ Milepost Marker	— Lot Lines	
▽ Yield	⊗ Gated	● Curb Cut	— CL-S	— LaneLineIn			
			— Median Center				

## US-95 Access Management Plan

### ITD Project # A000(968); Key # 09968



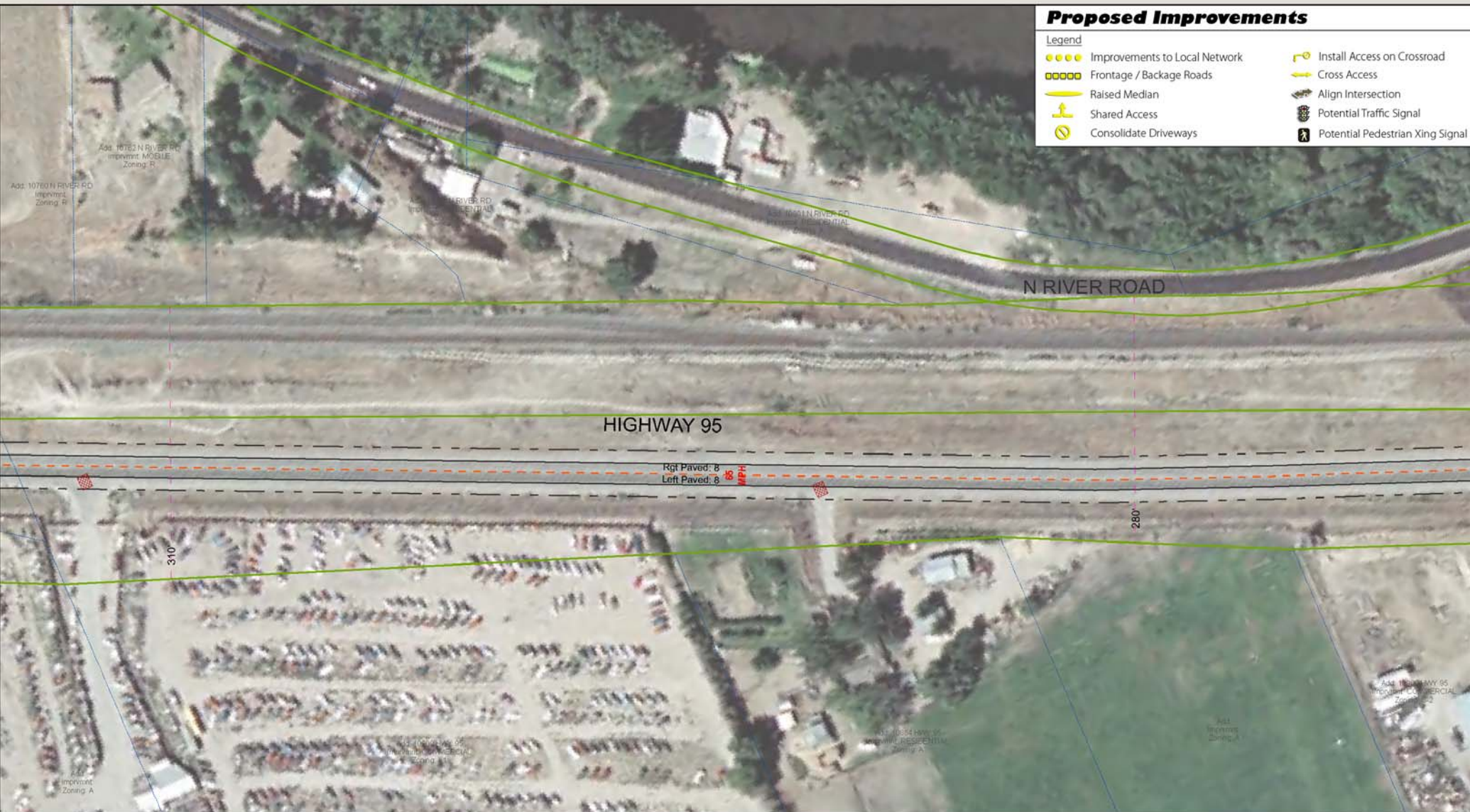
**HDR** ONE COMPANY  
Many Solutions™



# Map 36

**MP 70.228 - MP 70.53**

Imagery Source: Payette County  
 Other Data Sources: Idaho Transportation Department, Payette County  
 Map Date: Monday, June 8, 2009  
 Q:\ITD\US95\_AccessManagementPlan\map\_book\MapBookField.mxd



### Proposed Improvements

Legend

- Improvements to Local Network
- Frontage / Backage Roads
- Raised Median
- Shared Access
- Consolidate Driveways
- Install Access on Crossroad
- Cross Access
- Align Intersection
- Potential Traffic Signal
- Potential Pedestrian Xing Signal

### Legend

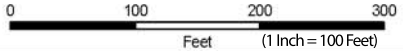
● Stop sign	🚗 Garage	▨ Paved	— Center Line	— Edge Pavement	— Curb	90' RW Dimension
⊕ Signal	⊗ Obstruction	▨ Unpaved	— CL-Inv	— Edge Median	— Edge Shoulder	— RW
⊗ RR Xing	⊗ Fenced	● Apron	— CL-NoPass	— Lane Line	◆ Milepost Marker	— Lot Lines
▽ Yield	⊗ Gated	● Curb Cut	— CL-S	— LaneLineIn	— Median Center	

## US-95 Access Management Plan

### ITD Project # A000(968); Key # 09968



HDR ONE COMPANY Many Solutions™



# Map 37

MP 70.53 - MP 70.832

Imagery Source: Payette County  
 Other Data Sources: Idaho Transportation Department, Payette County  
 Map Date: Monday, June 8, 2009  
 Q:\ITD\US95\_AccessManagementPlan\map\_book\MapBookField.mxd

### Proposed Improvements

#### Legend

- Improvements to Local Network
- Frontage / Backage Roads
- Raised Median
- ⚠ Shared Access
- ⚠ Consolidate Driveways
- 🚧 Install Access on Crossroad
- ↔ Cross Access
- 🚦 Align Intersection
- 🚦 Potential Traffic Signal
- 🚶 Potential Pedestrian Xing Signal

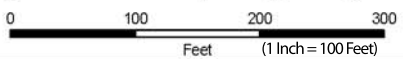


- #### Legend
- Stop sign
  - ⊕ Signal
  - ⊗ RR Xing
  - ⚠ Yield
  - 🚗 Garage
  - ⊗ Obstruction
  - ⊗ Fenced
  - ⊗ Gated
  - ▨ Paved
  - ▨ Unpaved
  - ⬢ Apron
  - Curb Cut
  - Center Line
  - CL-Inv
  - CL-NoPass
  - CL-S
  - Edge Pavement
  - Edge Median
  - Edge Shoulder
  - ◆ Milepost Marker
  - Curb
  - Lane Line
  - LaneLineIn
  - Median Center
  - 90' RW Dimension
  - RW
  - Lot Lines

## US-95 Access Management Plan ITD Project # A000(968); Key # 09968



**HDR** ONE COMPANY  
*Many Solutions™*



# Map 38

MP 70.832 - MP 71.13

Imagery Source: Payette County  
Other Data Sources: Idaho Transportation Department, Payette County  
Map Date: Monday, June 8, 2009  
Q:\ITD\US95\_AccessManagementPlan\map\_book\MapBookField.mxd