



# 2016

# Quick Facts

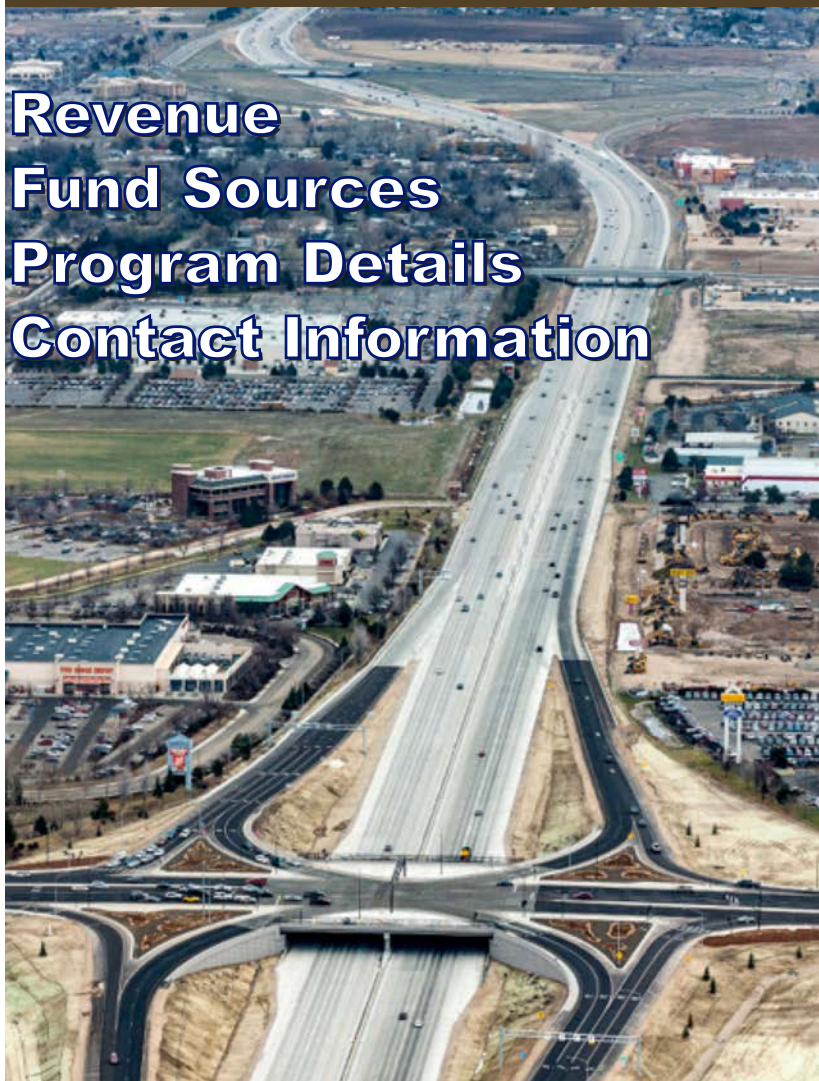
*Your Safety. Your Mobility. Your Economic Opportunity.*

Revenue

Fund Sources

Program Details

Contact Information



COVER PHOTO:

**Meridian Interchange  
I-84**



# Table of Contents

<b>Mission .....</b>	<b>1</b>
<b>Department Organization.....</b>	<b>2</b>
<b>Idaho Transportation Board.....</b>	<b>3</b>
<b>Director and Chief Officers .....</b>	<b>5</b>
<b>Division Administrators .....</b>	<b>6</b>
<b>District Engineers .....</b>	<b>7</b>
<b>Budget Facts .....</b>	<b>9</b>
<b>Highway and Bridge Facts.....</b>	<b>15</b>
<b>Motor Vehicle Facts .....</b>	<b>17</b>
<b>Aeronautics Facts.....</b>	<b>19</b>
<b>Public Transportation Facts .....</b>	<b>20</b>
<b>Highway Safety Facts.....</b>	<b>20</b>

---

## The Idaho Transportation Department

3311 W. State Street

P.O. Box 7129

Boise, Idaho 83707-1129

[itd.idaho.gov](http://itd.idaho.gov)

(208) 334-8000

TDD (208) 334-4455



# ***Our Mission:***

***Your Safety.***

***Your Mobility.***

***Your Economic Opportunity.***

## **GOAL:**

**Commit to providing the safest transportation system possible**

### **What We Will Measure**

- Reduction in fatalities
- Reduction in serious injuries
- Reduction in injuries and fatalities related to distracted driving
- Reduction in injuries and fatalities related to impaired driving
- Impact of corridor-safety initiatives and improvements
- Increase in seat belt use

## **GOAL:**

**Provide a mobility-focused transportation system that drives economic opportunity**

### **What We Will Measure**

- Increase in Idaho gross domestic product
- Increase in jobs and business revenues
- Increase in the efficiency in which goods are transported
- Reduction in travel times for commuting, commerce, recreation, and tourism

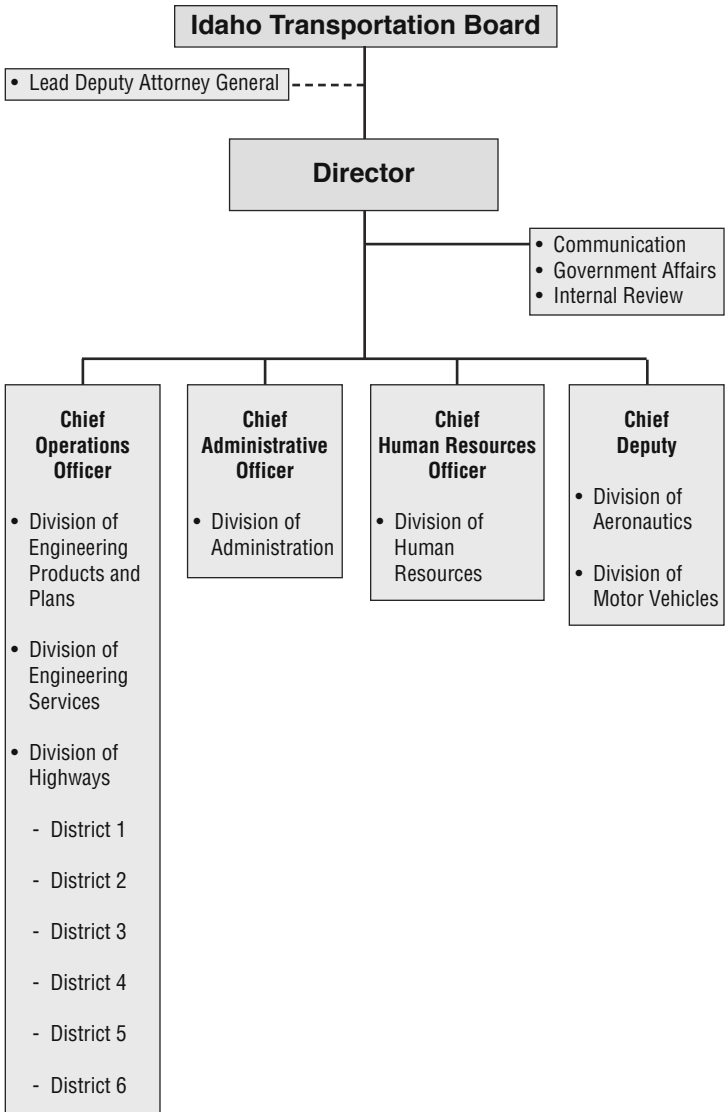
## **GOAL:**

**Become the best organization by continually developing employees and implementing innovative business practices**

### **What We Will Measure**

- Reduction in costs through innovation, process improvement, and technology
- Improvement in performance measures
- Increase in customer satisfaction
- Progress toward the desired organizational culture
- Effectiveness of the department's leadership
- Individual performance plans linked to the department's strategic goals
- Increase in employee productivity
- Reduction in turnover
- Total employee compensation compared to similar markets

# Department Organization



# Idaho Transportation Board

The Idaho Transportation Board is a seven-member panel of citizens appointed by the Idaho Governor and confirmed by the Idaho Senate. The transportation board is responsible for establishing department policy and hiring the department's director.



## **CHAIRMAN**

Jerry Whitehead, Boise  
Serves at the pleasure of the Governor  
No term expiration



## **District 1**

James Coleman, Coeur d'Alene  
Term expires January 31, 2019

## **Counties:**

Benewah, Bonner, Boundary,  
Kootenai, Shoshone



## **District 2**

Jan Vassar, Lewiston  
Term expires January 31, 2022

## **Counties:**

Clearwater, Idaho, Latah, Lewis,  
Nez Perce



## **District 3**

Julie DeLorenzo, Boise  
Term expires January 31, 2021

## **Counties:**

Ada, Adams, Boise, Canyon,  
Elmore, Gem, Owyhee, Payette, Valley,  
Washington

# Idaho Transportation Board

Board members represent each of the state's six transportation districts and serve staggered, six-year terms on a part-time basis. The seventh member, the board chairman, serves at the pleasure of the governor and votes in the event of a tie.



## **District 4**

Jim Kempton, Albion  
Term expires January 31, 2018

### **Counties:**

Blaine, Camas, Cassia, Gooding, Jerome,  
Lincoln, Minidoka, Twin Falls



## **District 5**

Dwight Horsch, Pocatello  
Term expires January 31, 2017

### **Counties:**

Bannock, Bear Lake, Bingham,  
Caribou, Franklin, Oneida, Power



## **District 6, Vice Chairman**

Lee Gagner, Idaho Falls  
Term expires January 31, 2020

### **Counties:**

Bonneville, Butte, Clark, Custer,  
Fremont, Jefferson, Lemhi, Madison, Teton



## **Executive Assistant to the Board**

Sue Higgins  
P.O. Box 7129  
Boise, Idaho 83707-1129  
Phone: (208) 334-8808  
Fax: (208) 334-8195  
[sue.higgins@itd.idaho.gov](mailto:sue.higgins@itd.idaho.gov)

## Director and Chief Officers



**Director**  
Brian W. Ness



**Chief Deputy**  
Scott Stokes



**Chief Operations Officer**  
Jim Carpenter



**Chief Administrative Officer**  
Charlene McArthur



**Chief Human Resource Officer**  
Brenda Williams

### **Contact Information:**

Beth Schiller, Management Assistant  
(208) 334-8820

FAX: (208) 334-8195  
[beth.shiller@itd.idaho.gov](mailto:beth.shiller@itd.idaho.gov)



## Division Administrators



**Aeronautics  
Administrator**  
Mike Pape  
(208) 334-8775



**Chief Engineer,  
Engineering  
Products and Plans  
Administrator**  
Kimbol Allen  
(208) 334-8802



**Engineering  
Services  
Administrator**  
Blake Rindlisbacher  
(208) 334-8281



**Motor  
Vehicle  
Administrator**  
Alan Frew  
(208) 334-8809

## District Engineers



### District 1

Damon L. Allen, District Engineer  
damon.allen@itd.idaho.gov  
600 W. Prairie Ave.,  
Coeur d'Alene, Idaho 83815-8764  
Phone: (208) 772-1200  
TDD: (208) 772-8071

### Counties:

Benewah, Bonner, Boundary,  
Kootenai, Shoshone



### District 2

Dave Kuisti, District Engineer  
dave.kuisti@itd.idaho.gov  
2600 Frontage Road, P.O. Box 837  
Lewiston, Idaho 83501-0837  
Phone: (208) 799-5090  
TDD: (208) 799-4838

### Counties:

Clearwater, Idaho, Latah,  
Lewis, Nez Perce



### District 3

Amy Revis, District Engineer  
amy.revis@itd.idaho.gov  
8150 Chinden Boulevard, P.O. Box 8028  
Boise, Idaho 83714-2025  
Phone: (208) 334-8300  
TDD: (208) 334-8918

### Counties:

Ada, Adams, Boise, Canyon,  
Elmore, Gem, Owyhee, Payette, Valley,  
Washington

## District Engineers



### District 4

Devin O. Rigby, District Engineer  
devin.rigby@itd.idaho.gov  
216 S. Date St., P.O. Box 2-A  
Shoshone, Idaho 83352-0820  
Phone: (208) 886-7800  
TDD: (208) 886-7802

### Counties:

Blaine, Camas, Cassia,  
Gooding, Jerome,  
Lincoln, Minidoka, Twin Falls



### District 5

Edward A. Bala, District Engineer  
ed.bala@itd.idaho.gov  
5151 South 5th Avenue  
Pocatello, ID 83204-2202  
Phone: (208) 239-3300  
TDD: (208) 234-3613

### Counties:

Bannock, Bear Lake, Bingham,  
Caribou, Franklin, Oneida, Power



### District 6

Jason Minzghor, District Engineer  
jason.minzghor@itd.idaho.gov  
206 N. Yellowstone Highway, P.O. Box 97  
Rigby, Idaho 83442-0097  
Phone: (208) 745-7781  
TDD: (208) 745-5614

### Counties:

Bonneville, Butte, Clark, Custer,  
Fremont, Jefferson, Lemhi, Madison, Teton

# Budget Facts

The Idaho Transportation Department's funding combines federal revenue with state taxes and fees.

Revenues are allocated to six budgetary programs: Administration, Aeronautics, Capital Facilities, Contract Construction, Highway Operations, and Motor Vehicles.

## Federal Revenue

Congress allocates revenue to states through the national transportation bill, historically reauthorized every six years. In December 2015 the President signed a new bill, the Fixing America's Surface Transportation (FAST) Act, which is a five-year bill that expires in the year 2020.

## FY16 Federal Fuel Tax Rates (cents per gallon)

• Gas (and gasohol).....	18.4¢
• Diesel .....	24.4¢

*(Federal Highway Trust Fund revenue also includes heavy tire tax and heavy vehicle use tax)*

## State Revenue

The majority of state fuel taxes on gasoline and diesel are deposited into the Highway Distribution Account (HDA) along with revenue generated by vehicle registration fees, driver licensing fees, and miscellaneous sources.

Effective July 1, 2015, the Idaho Legislature authorized an increase in state fuel taxes and vehicle registration fees. Sixty percent of the revenue generated by these increases (not including special fuels) is distributed to the State Highway Account. The remaining 40 percent is distributed to cities, counties, and highway districts.

The 2015 Legislature also authorized a "surplus eliminator" provision depositing 50 percent of excess state General Fund cash balance at the end of FY15 and FY16 into the Strategic Initiatives Program Fund. This provision expires May 31, 2017.

**State Fuel Tax Rates** (cents per gallon)

- 1976-1981 .....9.5¢
- 1981-1982 .....11.5¢
- 1982-1983 .....12.5¢
- 1983-1988 .....14.5¢
- 1988-1991 .....18¢
- 1991-1996 .....21¢
- 1997 to June 30, 2015.....25¢
- July 1, 2015 to present .....32¢

*Note: A transfer fee of 1¢ per gallon is also charged on all petroleum products when the unencumbered balance in the Petroleum Clean Water Trust Fund is less than \$35 million.*

**Passenger Car Registration Fees\***

- Vehicles one and two years old.....\$69
- Vehicles three to six years old.....\$57
- Vehicles older than six years .....\$45

*\*Passenger car registration fees increased by \$21 beginning 7-1-2015*

**Off-the-Top Distribution**

A portion of state resources is distributed “off the top” before being distributed through the HDA, including:

- Idaho Tax Commission
- Bridge inspections
- Railroad crossings
- Fuel tax refunds\*
- Department of Parks and Recreation

*\* Refunds for fuel tax collected for fuel that is not used on highways (gasoline or diesel used in farm tractors, construction vehicles, logging trucks on private roads, etc.).*

**Strategic Initiatives Program**

House Bill 312, enacted during the 2015 Legislative session, directed ITD to establish and maintain a Strategic Initiatives Program. The purpose is to fund projects proposed by the department’s six districts. The projects must compete for selection based on an analysis of their return on investment in:

- Safety
- Mobility
- Economic Opportunity
- Bridge repair and maintenance
- Right-of-way purchases

(Dollars rounded and in millions)

House Bill 312 also created a Strategic Initiatives Program Fund that receives revenue appropriated by the legislature to fund the Strategic Initiatives Program.

### **FY16 Highway Distribution Account (HDA)**

#### **Distribution of Net Funds to the HDA**

- Idaho State Police .....5%
- City, county, and highway-district jurisdictions .....38%
- State Highway Account .....57%

#### **Revenue Sources\***

- State gas tax (25 cents per gallon).....\$163.8
  - State diesel tax (25 cents per gallon) .....\$67.6
  - Vehicle registration fees .....\$53.8
  - Heavy truck registration fees .....\$51.7
  - Driver licensing and miscellaneous fees .....\$10.8
- Total: \$347.7**

*\*Net to HDA, in millions, after off-the-top deductions*

### **FY16 House Bill 312 Revenue**

#### **Distribution of Net HB 312 Revenue**

- City, county, and highway-district jurisdictions .....40%
- State Highway Account .....60%

#### **Revenue Sources (in millions)**

- State gas tax (7 cents per gallon).....\$39.8
  - State diesel tax (7 cents per gallon) .....\$17.0
  - Vehicle registration fees .....\$30.2
  - Heavy truck registration fees.....\$0.9
  - Electric/Hybrid Vehicle fees.....\$0.9
- Total: \$88.8**

Note: A \$11 million General Fund Surplus cash balance transfer occurred at the end of FY16.

(Dollars rounded and in millions)

### **State Highway Account**

The remainder of the state highway revenue, including funds provided directly to ITD, are added to federal resources to fund the State Highway Account. Because the tax exemption for ethanol was eliminated in FY10, seven percent of motor fuel tax revenue is now deposited directly into the state highway account.

ITD uses more than half of the State Highway Account to fund contract construction projects and acquire right of way. The remaining funds are used for:

- Capital equipment
- Operations
- Capital facilities
- Personnel

### **FY17 Appropriation by Fund Source**

• Federal .....	\$301.4
• State (dedicated) .....	\$349.9
• Other .....	\$4.6

### **FY17 Appropriation by Expenditure Classification**

• Capital outlay .....	\$407.0
• Personnel .....	\$131.0
• Operating .....	\$96.7
• Trustee/Benefit .....	\$21.2

### **FY17 Staffing Level**

- Authorized full-time equivalent positions (FTPs) ..... 1,678

*(ITD's authorized staffing level was reduced from 1,698.7 to 1678 positions in fiscal year 2017)*

(Dollars rounded and in millions)

**FY17 Program Funding\***

- Administration (4.3% of appropriation) .....\$28.0
- Aeronautics (0.4%) .....\$2.8
- Capital facilities (0.5%).....\$3.3
- Contract construction, right of way (59.7%) .....\$391.6
- Highway operations (29.7%) .....\$194.9
- Division of Motor Vehicles (5.4%).....\$35.3

**Total Appropriation (SB-1423): \$655.9**

- GARVEE Debt Service .....\$58.1

**Total Program Funding: \$714.0**

In addition to the original FY17 appropriation (SB-1423), the department has requested \$24.76 million supplemental spending authority for the \$10.97 million FY16 year-end General Fund surplus transfer to ITD’s Strategic Initiatives Fund and \$13.79 million additional federal funding and associated match received during FY17. The supplemental spending authority will be used in the Contract Construction program for road and bridge projects.

**GARVEE Program**

The Idaho Legislature, in 2005, approved the use of GARVEE (Grant Anticipation Revenue Vehicle) bonds that expedite highway construction projects based on anticipated federal revenue.

ITD uses GARVEE bonds to offset the effects of inflation by advancing high-priority projects that otherwise would have taken decades to fund and complete. During FY16, the remainder of GARVEE bond proceeds was drawn down and projects were closed out.

- Total Amount Authorized ..... \$857.7 Mil.
- Bonds Sold ..... \$857.7 Mil.
- Expended (as of 6-30-16) ..... \$857.7 Mil.





# Highway and Bridge Facts

## STATE TRANSPORTATION SYSTEM

### Highways

- Centerline Miles (includes unpaved) ..... 4,992
- Lane Miles (includes unpaved)..... 12,320

### Bridges .....1,824

- Square Feet of State Bridge Deck ..... 12 million

### Ports of Entry .....12

- Bonners Ferry.....U.S. 95/U.S. 2
- Cotterel (*one port on each side of the highway*) .....I-84/I-86
- East Boise (*one port on each side of the highway*).....I-84
- Haugan (Montana) .....I-90
- Hollister .....U.S. 93
- Horseshoe Bend\* .....SH-55
- Huetter .....I-90
- Inkom (*one port on each side of the highway*) .....I-15
- Lewiston .....U.S. 12/U.S. 95
- Lewiston Hill\* .....U.S. 95
- Marsing.....U.S. 55/U.S. 95
- Sage Junction .....I-15

\*Secondary port-of-entry facility

### Rest Areas .....31

- Big Lost River .....U.S. 20/26
- Bliss (2) .....I-84
- Blacks Creek (2).....I-84
- Camas Prairie (partnership rest area near Winchester) ....U.S. 95
- Cherry Creek.....I-15
- Clark Hill .....U.S. 26
- Coldwater Hill .....I-86
- Cotterell (2) .....I-84
- Dubois .....I-15
- Hagerman.....U.S. 30
- Huetter (2) .....I-90
- Jct. U.S. 93.....I-84
- Juniper (2).....I-84
- Lenore .....U.S. 12
- Lolo Pass.....U.S. 12
- Lost Trail Pass (Montana) .....U.S. 93
- Malad Summit .....I-15
- Massacre Rocks.....I-86
- McCammon (Oasis Rest Area) .....I-15
- Midvale Hill .....U.S. 95
- Mineral Mountain.....U.S. 95

- North Blackfoot (2) .....I-15
- Sheep Creek .....U.S. 95
- Snake River View .....I-84
- Timmerman .....U.S. 20

**Scenic Byways (2,468 miles) .....31**

- City of Rocks Back Country Byway .....49 miles
- Elk River Back Country Byway .....57 miles
- Fort Henry Historic Byway .....97 miles
- Gold Rush Historic Byway .....42 miles
- Hells Canyon Scenic Byway .....22 miles
- Lake Coeur d'Alene Scenic Byway .....36 miles
- Lewis and Clark Back Country Byway .....39 miles
- Lost Gold Trails Loop .....48 miles
- Lower Payette River Heritage Byway .....52 miles
- Main Oregon Trail Back Country Byway .....102 miles
- Mesa Falls Scenic Byway .....29 miles
- Northwest Passage Scenic Byway .....202 miles
- Oregon Trail - Bear Lake Scenic Byway .....110 miles
- Owyhee Uplands Back Country Byway .....101 miles
- Panhandle Historic Rivers Passage .....28 miles
- Payette River Scenic Byway .....112 miles
- Peaks to Craters Scenic Byway .....140 miles
- Pend Oreille Scenic Byway .....33 miles
- Pioneer Historic Byway .....127 miles
- Ponderosa Pine Scenic Byway .....131 miles
- Sacajawea Historic Byway .....132 miles
- Salmon River Scenic Byway .....162 miles
- Sawtooth Scenic Byway .....116 miles
- St. Joe River Scenic Byway .....89 miles
- Snake River Canyon Scenic Byway .....53 miles
- Teton Scenic Byway .....69 miles
- Thousand Springs Scenic Byway .....68 miles
- Western Heritage Historic Byway .....47 miles
- White Pine Scenic Byway .....83 miles
- Wild Horse Trail Scenic Byway .....59 miles
- Wildlife Canyon Scenic Byway .....33 miles

**LOCAL TRANSPORTATION SYSTEM**

**Highways**

- Local/Forest/Tribal Lane Miles (includes unpaved) ..... 87,167

**Bridges .....2,374**

- Square Feet of Local Bridge Deck ..... 5.7 million

# Motor Vehicle Facts

## CY15 DRIVER LICENSES AND ID CARDS

- Licensed Drivers.....1,144,320
- Licenses/IDs Issued Annually (10-yr. avg.) ..... 338,866
- Out-of-state driver licenses surrendered .....44,732
- Idaho driver licenses surrendered to other states .....28,592

## CY15 VEHICLE REGISTRATION

- Passenger cars .....1,292,492
- Trucks.....143,337
- Miscellaneous motor vehicles.....53,311
- Trailers.....206,882

**Total Motor Vehicles and Trailers:           1,696,022**

## County License Plate Identifiers

County	Prefix	County	Prefix	County	Prefix
Ada	1A	Cassia	4C	Lewis	3L
Adams	2A	Clark	5C	Lincoln	4L
Bannock	1B	Clearwater	6C	Madison	1M
Bear Lake	2B	Custer	7C	Minidoka	2M
Benewah	3B	Elmore	E	Nez Perce	N
Bingham	4B	Franklin	1F	Oneida	1O
Blaine	5B	Fremont	2F	Owyhee	2O
Boise	6B	Gem	1G	Payette	1P
Bonner	7B	Gooding	2G	Power	2P
Bonneville	8B	Idaho	I	Shoshone	S
Boundary	9B	Jefferson	1J	Teton	1T
Butte	10B	Jerome	2J	Twin Falls	2T
Camas	1C	Kootenai	K	Valley	V
Canyon	2C	Latah	1L	Washington	W
Caribou	3C	Lemhi	2L		

# Aeronautics Facts

## Airports and Airstrips

- Unrestricted public-use airports.....126
- Reliever airport (Caldwell) ..... 1
- General aviation airports .....30
- Community airports .....31
- State-operated airstrips .....31
- U.S. Forest Service airstrips.....26
- Primary Service Airports.....7
  - Boise Air Terminal, Boise
  - Fanning Field, Idaho Falls
  - Friedman Memorial Airport, Hailey
  - Joslin Field/Magic Valley Regional Airport, Twin Falls
  - Lewiston/Nez Perce County Airport, Lewiston
  - Pocatello Regional Airport, Pocatello
  - Pullman-Moscow Regional Airport, Pullman, Washington

## Pilots and Aircraft

- Registered aircraft (approx.).....2,780
- Pilots (approx.) .....5,900
- Aircraft registration fee, per pound gross maximum weight .....3¢  
*(Total fee not to exceed \$600 annually)*

## Fuel Taxes\*

- Federal aviation gasoline tax (per gallon) .....19.4¢
- Federal jet fuel tax\*\* (per gallon).....4.4¢
- State aviation gasoline tax (per gallon) .....7¢
- State jet fuel tax (per gallon) .....6¢

\* The Division of Aeronautics' primary revenue source is aviation fuel taxes.

\*\*For commercial use.

## Public Transportation Facts

- Metropolitan Planning Organizations ..... 5
  - Public Transportation Providers ..... 57
  - Percent of Idahoans with access to transit..... 56%
- 

## Highway Safety Facts (Calendar Year 2015)

- Total fatal crashes ..... 198
  - Economic costs of 198 fatal crashes..... \$2.05 billion
  - Percent of fatal crashes related to impaired driving\* ..... 39%
  - Percent of fatal crashes related to distracted driving\* ..... 23%
- Total fatalities..... 216
  - Fatalities related to impaired driving\* ..... 87
  - Fatalities related to aggressive driving\* ..... 77
  - Motorcycle fatalities ..... 28
  - Pedestrian fatalities ..... 8
  - Bicycle fatalities ..... 0
- Percent of people in Idaho wearing seat belts ..... 81.1%

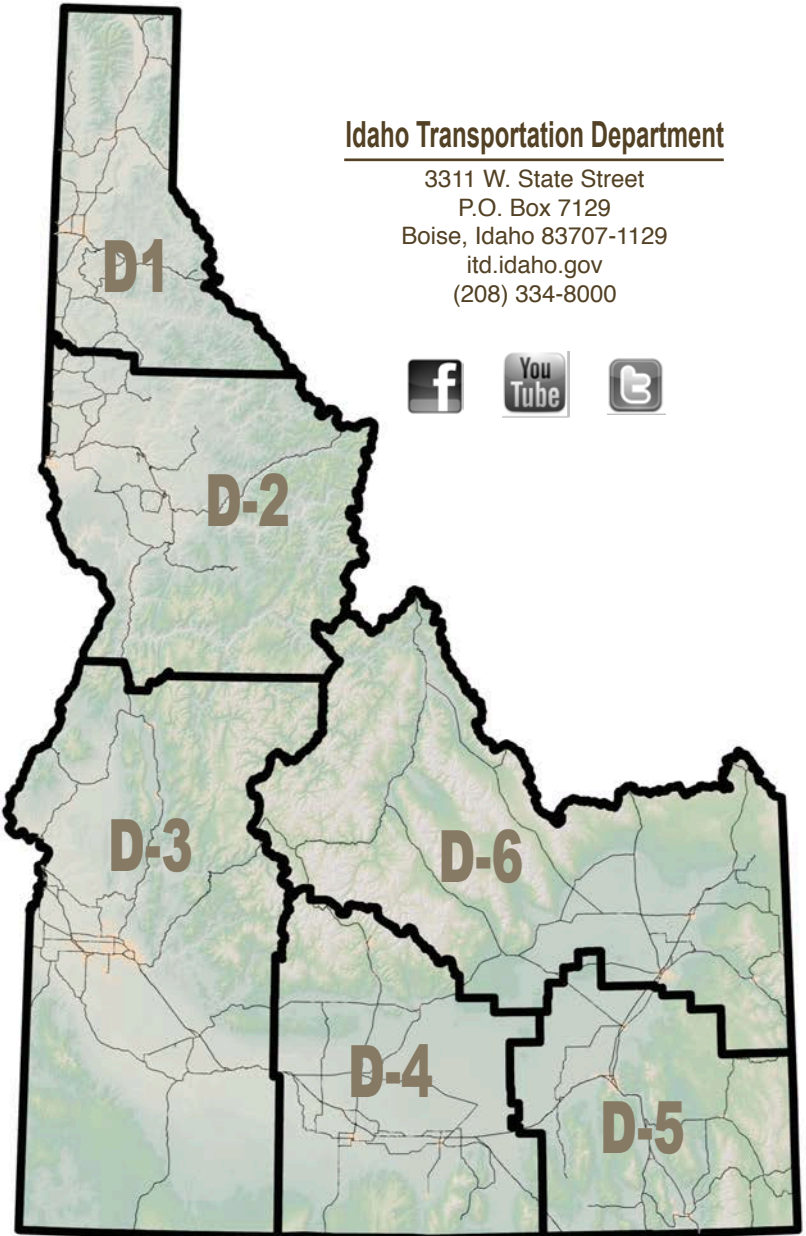
*\*Crashes can involve several contributing factors, including impairment, aggressive driving, and distracted driving.*





## Idaho Transportation Department

3311 W. State Street  
P.O. Box 7129  
Boise, Idaho 83707-1129  
itd.idaho.gov  
(208) 334-8000



itd.idaho.gov