

# 2019 Quick Facts

**Revenue**  
**Fund Sources**  
**Program Details**  
**Contact Information**



*Your Safety. Your Mobility. Your Economic Opportunity.*

COVER PHOTO:

**Greer Bridge  
Junction of U.S. 12 and Idaho 11**



Taken by Joe Schacher, District 2 Resident Engineer

# Table of Contents

<b>Mission .....</b>	<b>1</b>
<b>Department Organization .....</b>	<b>2</b>
<b>Idaho Transportation Board.....</b>	<b>3</b>
<b>Director and Chief Officers .....</b>	<b>5</b>
<b>Division Administrators .....</b>	<b>6</b>
<b>District Engineers .....</b>	<b>7</b>
<b>Budget Facts .....</b>	<b>9</b>
<b>Highway and Bridge Facts .....</b>	<b>16</b>
<b>Motor Vehicle Facts .....</b>	<b>18</b>
<b>Aeronautics Facts.....</b>	<b>20</b>
<b>Public Transportation Facts .....</b>	<b>21</b>
<b>Highway Safety Facts.....</b>	<b>21</b>

---

## The Idaho Transportation Department

3311 W. State Street  
P.O. Box 7129  
Boise, Idaho 83707-1129  
itd.idaho.gov  
(208) 334-8000  
TDD (208) 334-4455



# ***Our Mission:***

***Your Safety.***

***Your Mobility.***

***Your Economic Opportunity.***

## **GOAL:**

**Commit to providing the safest transportation system possible**

### **What We Will Measure**

- Reduction in fatalities
- Reduction in serious injuries
- Reduction in injuries and fatalities related to distracted driving
- Reduction in injuries and fatalities related to impaired driving
- Impact of corridor-safety initiatives and improvements
- Increase in seat belt use

## **GOAL:**

**Provide a mobility-focused transportation system that drives economic opportunity**

### **What We Will Measure**

- Increase in Idaho gross domestic product
- Increase in jobs and business revenues
- Increase in the efficiency in which goods are transported
- Reduction in travel times for commuting, commerce, recreation, and tourism

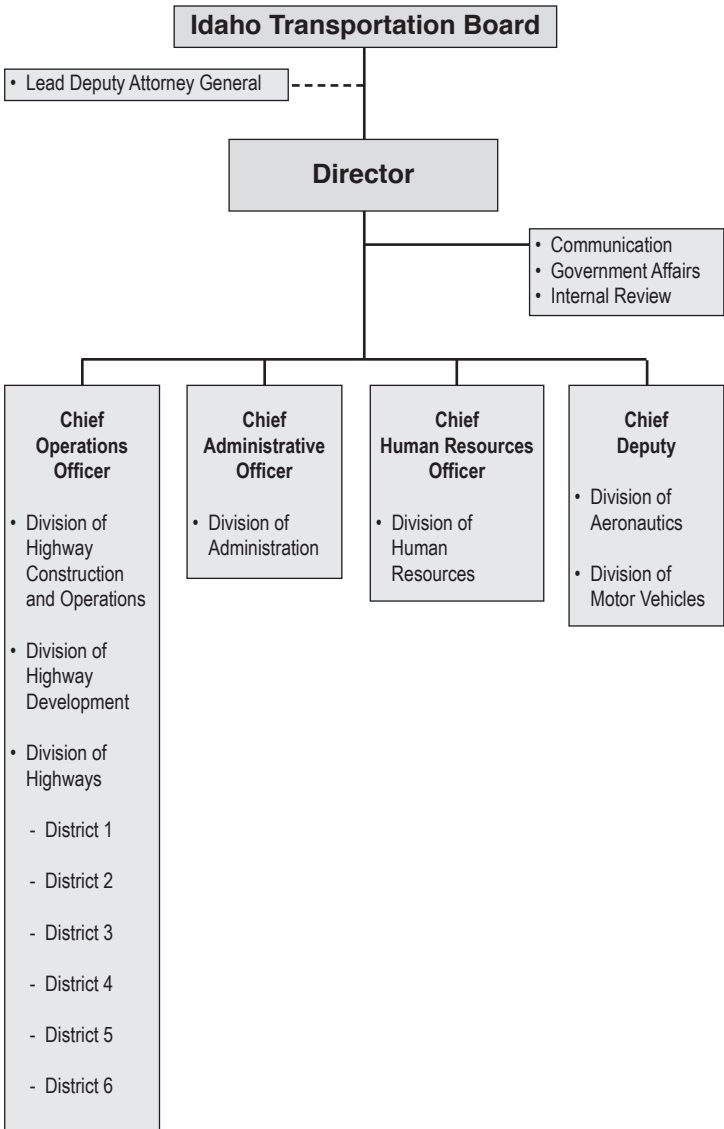
## **GOAL:**

**Become the best organization by continually developing employees and implementing innovative business practices**

### **What We Will Measure**

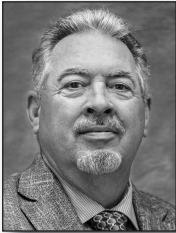
- Reduction in costs through innovation, process improvement, and technology
- Improvement in performance measures
- Increase in customer satisfaction
- Progress toward the desired organizational culture
- Effectiveness of the department's leadership
- Individual performance plans linked to the department's strategic goals
- Increase in employee productivity
- Reduction in turnover
- Total employee compensation compared to similar markets

# Department Organization



# Idaho Transportation Board

The Idaho Transportation Board is a seven-member panel of citizens appointed by the Idaho Governor and confirmed by the Idaho Senate. The transportation board is responsible for establishing department policy and hiring the department's director.



## **CHAIRMAN**

Bill Moad, Caldwell

Serves at the pleasure of the Governor

No term expiration



## **District 1, Vice Chairman**

Jim Thompson, Sandpoint

Term expires January 31, 2025

### **Counties:**

Benewah, Bonner, Boundary,  
Kootenai, Shoshone



## **District 2**

Jan Vassar, Lewiston

Term expires January 31, 2022

### **Counties:**

Clearwater, Idaho, Latah, Lewis,  
Nez Perce



## **District 3**

Julie DeLorenzo, Boise

Term expires January 31, 2021

### **Counties:**

Ada, Adams, Boise, Canyon,  
Elmore, Gem, Owyhee, Payette, Valley,  
Washington

# Idaho Transportation Board

Board members represent each of the state's six transportation districts and serve staggered, six-year terms on a part-time basis. The seventh member, the board chairman, serves at the pleasure of the governor and votes in the event of a tie.



## District 4

Jim Kempton, Albion

Term expires January 31, 2024

## Counties:

Blaine, Camas, Cassia, Gooding, Jerome, Lincoln, Minidoka, Twin Falls



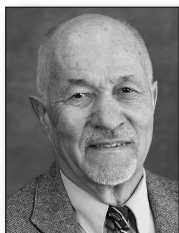
## District 5

Dwight Horsch, Pocatello

Term expires January 31, 2023

## Counties:

Bannock, Bear Lake, Bingham, Caribou, Franklin, Oneida, Power



## District 6

Bob Hoff, Idaho Falls

Term expires January 31, 2020

## Counties:

Bonneville, Butte, Clark, Custer, Fremont, Jefferson, Lemhi, Madison, Teton



## Executive Assistant to the Board

Sue Higgins

P.O. Box 7129

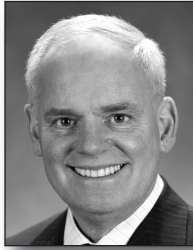
Boise, Idaho 83707-1129

Phone: (208) 334-8808

Fax: (208) 334-8195

sue.higgins@itd.idaho.gov

## Director and Chief Officers



**Director**  
Brian W. Ness



**Chief Deputy**  
Scott Stokes



**Chief Operations Officer**  
(Vacant)



**Chief Administrative Officer**  
Charlene McArthur



**Chief Human Resource Officer**  
Brenda Williams

### **Contact Information:**

Beth Schiller, Management Assistant  
(208) 334-8820

FAX: (208) 334-8195  
beth.schiller@itd.idaho.gov



## Division Administrators



**Aeronautics  
Administrator**  
Jeff Marker  
(208) 334-8788



**Chief Engineer,  
Highways  
Development  
Administrator**  
Blake Rindlisbacher  
(208) 334-8281



**Highways  
Construction and  
Operations  
Administrator**  
Dave Kuisti  
(208) 334-8802



**Motor  
Vehicle  
Administrator**  
Alberto Gonzalez  
(208) 334-8809

## District Engineers

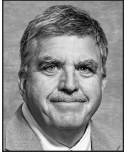


### District 1

Damon L. Allen, District Engineer  
damon.allen@itd.idaho.gov  
600 W. Prairie Ave.,  
Coeur d'Alene, Idaho 83815-8764  
Phone: (208) 772-1200  
TDD: (208) 772-8071

### Counties:

Benewah, Bonner, Boundary,  
Kootenai, Shoshone



### District 2

Doral Hoff, District Engineer  
doral.hoff@itd.idaho.gov  
2600 Frontage Road, P.O. Box 837  
Lewiston, Idaho 83501-0837  
Phone: (208) 799-5090  
TDD: (208) 799-4838

### Counties:

Clearwater, Idaho, Latah,  
Lewis, Nez Perce



### District 3

Caleb Lakey, District Engineer  
caleb.lakey@itd.idaho.gov  
8150 Chinden Boulevard, P.O. Box 8028  
Boise, Idaho 83714-2025  
Phone: (208) 334-8300  
TDD: (208) 334-8918

### Counties:

Ada, Adams, Boise, Canyon,  
Elmore, Gem, Owyhee, Payette, Valley,  
Washington

## District Engineers



### District 4

Jesse Barrus, District Engineer  
jesse.barrus@itd.idaho.gov  
216 S. Date St., P.O. Box 2-A  
Shoshone, Idaho 83352-0820  
Phone: (208) 886-7800  
TDD: (208) 886-7802

### Counties:

Blaine, Camas, Cassia, Gooding, Jerome,  
Lincoln, Minidoka, Twin Falls



### District 5

Todd Hubbard, District Engineer  
todd.hubbard@itd.idaho.gov  
5151 South 5th Avenue  
Pocatello, ID 83204-2202  
Phone: (208) 239-3300  
TDD: (208) 234-3613

### Counties:

Bannock, Bear Lake, Bingham,  
Caribou, Franklin, Oneida, Power



### District 6

Jason Minzghor, District Engineer  
jason.minzghor@itd.idaho.gov  
206 N. Yellowstone Highway, P.O. Box 97  
Rigby, Idaho 83442-0097  
Phone: (208) 745-7781  
TDD: (208) 745-5614

### Counties:

Bonneville, Butte, Clark, Custer,  
Fremont, Jefferson, Lemhi, Madison, Teton

# Budget Facts

The Idaho Transportation Department's funding combines federal revenue with state taxes and fees.

Revenues are allocated to six budgetary programs: Administration, Aeronautics, Capital Facilities, Contract Construction, Highway Operations, and Motor Vehicles.

## FEDERAL REVENUE

Congress allocates revenue to states through the national transportation bill, historically reauthorized every six years. In December 2015 the President signed a new bill, the Fixing America's Surface Transportation (FAST) Act, which is a five-year bill that expires in the year 2020.

### FY19 Federal Fuel Tax Rates (cents per gallon)

- Gas (and gasohol) .....18.4¢
- Diesel .....24.4¢

*(Federal Highway Trust Fund revenue also includes heavy tire tax and heavy vehicle use tax)*

## State Revenue — User Fees

### Highway Distribution Account

The majority of state fuel taxes on gasoline and diesel are deposited into the Highway Distribution Account (HDA) along with revenue generated by vehicle registration fees, driver licensing fees, and miscellaneous sources. Gross collections include:

- 25¢ per gallon fuel tax
- Vehicle Registrations
- Other

### Off-the-Top Transfers Before Net Distribution

A portion of state resources is distributed “off the top” before being distributed through the HDA, including:

- Idaho Tax Commission
- Bridge inspections
- Railroad crossings
- Fuel tax refunds\*
- Department of Parks and Recreation

(Dollars rounded and in millions)

\* Refunds for fuel tax collected for fuel that is not used on highways (gasoline or diesel used in farm tractors, construction vehicles, logging trucks on private roads, etc.).

**Distribution of net Funds to the HDA (Percentages)**

- Idaho State Police .....5%
- City, county, and highway-district jurisdictions .....38%
- State Highway Account .....57%

(Note: Distribution to the Idaho State Police will be phased out over a five-year period beginning in Fiscal Year 2022.)

**FY19 HDA Revenue Sources\***

- State gas tax (25 cents per gallon).....\$177.6
- State diesel tax (25 cents per gallon) .....\$73.1
- Vehicle registration fees .....\$61.4
- Heavy truck registration fees.....\$61.8
- Driver licensing and miscellaneous fees .....\$8.8

**HDA Total:                   \$382.7**

*\*Net to HDA, in millions, after off-the-top deductions*

**House Bill 312 — 2015 Legislative Session**

Effective July 1, 2015, the Idaho Legislature authorized an increase in state fuel taxes and vehicle registration fees. Sixty percent of the revenue generated by these increases is distributed to the State Highway Account. The remaining 40 percent is distributed to cities, counties, and highway districts.

**Distribution of House Bill 312 Revenue (Percentages)**

- City, county, and highway-district jurisdictions .....40%
- State Highway Account .....60%

**FY19 House Bill 312 Revenue Sources**

- State gas tax (7 cents per gallon).....\$52.0
- State diesel tax (7 cents per gallon) .....\$22.0
- Vehicle registration fees .....\$37.9
- Heavy truck registration fees.....\$1.1
- Electric/Hybrid Vehicle fees.....\$0.3

**House Bill 312 Total:                   \$113.3**

**State Fuel Tax Rates** (cents per gallon)

• 1976 - 1981 .....	9.5¢
• 1981 - 1982 .....	11.5¢
• 1982 - 1983 .....	12.5¢
• 1983 - 1988 .....	14.5¢
• 1988 - 1991 .....	18¢
• 1991 - 1996 .....	21¢
• 1997 - 2015 .....	25¢
• 2016 to present .....	32¢

*Note: A transfer fee of 1¢ per gallon is also charged on all petroleum products when the unencumbered balance in the Petroleum Clean Water Trust Fund is less than \$35 million.*

**Passenger Car Registration Fees**

• Vehicles one and two years old.....	\$69
• Vehicles three to six years old.....	\$57
• Vehicles older than six years .....	\$45

**State Revenue — Other than User Fees**

**Strategic Initiatives Program**

House Bill 312, enacted during the 2015 Legislative session, directed ITD to establish and maintain a Strategic Initiatives Program (SIP). The purpose is to fund projects proposed by the department’s six districts. The projects must compete for selection based on an analysis of their return on investment in the prescribed categories.

House Bill 312 also created the Strategic Initiatives Program Fund (SIPF) that receives revenue appropriated by the legislature to fund the Strategic Initiatives Program.

House Bill 334, enacted during the 2017 Legislative session, added an additional category for child safety. The SIP now addresses:

- Safety
- Mobility
- Economic Opportunity
- Bridge Repair and Maintenance
- Right-of-Way Purchases
- Children Pedestrian Safety on the State and Local Systems

(Dollars rounded and in millions)

Senate Bill 1206, enacted during the 2017 Legislative session, apportions the moneys transferred into the SIPF as follows:

- City, county, and highway-district jurisdictions .....40%
- State Highway Account .....60%

**Transfers to the SIPF in FY19**

- FY18 Year-End General Fund Surplus Transferred to the Strategic Initiatives Fund during FY19 .....\$60.3
- State Highway System (60%) ..... \$36.2
- Local Highway System (40%) ..... \$24.1

(Note: Due to a sunset clause, no general fund transfers can be made to the SIPF after May 2019.)

**Transportation Expansion and Congestion Mitigation Program**

Senate Bill 1206, enacted during the 2017 Legislative session, established the Transportation Expansion and Congestion Mitigation (TECM) Program and fund.

The purpose of TECM is to fund projects that are chosen by the Idaho Transportation Board based on a project’s ability to mitigate traffic times, improve traffic flow, and mitigate traffic congestion.

The TECM fund receives revenue from one percent of sales tax after local revenue sharing, and all remaining moneys following the distribution of the cigarette tax revenue.

**FY19 TECM Revenue Sources**

- 1% of sales tax after local revenue sharing.....\$16.7
- Cigarette tax after prior statutory distributions.....\$2.5

**TOTAL:           \$19.2**

**State Highway Account**

The remainder of the state highway revenue, including funds provided directly to ITD, are added to federal resources to fund the State Highway Account. Because the tax exemption for ethanol was eliminated in FY10, seven percent of motor fuel tax revenue is now deposited directly into the state highway account.

(Dollars rounded and in millions)

ITD uses more than half of the State Highway Account to fund contract construction projects and acquire right of way.

The remaining funds are used for:

- Capital equipment
- Operations
- Capital facilities
- Personnel

### **FY20 Staffing Level**

- Authorized full-time equivalent positions (FTPs) .....1,648

*(ITD's authorized staffing level was reduced from 1,678 to 1,648 positions in FY18)*

### **FY20 Appropriation by Fund Source**

• Federal .....	\$347.9
• State (dedicated) .....	\$369.5
• Other .....	<u>\$10.2</u>
<b>TOTAL:</b>	<b>\$727.6</b>

### **FY20 Appropriation by Expenditure Classification**

• Capital outlay.....	\$463.6
• Personnel .....	\$134.9
• Operating.....	\$106.5
• Trustee/Benefit .....	<u>\$22.6</u>
<b>TOTAL:</b>	<b>\$727.6</b>

### **FY20 Program Funding\***

• Administration (4.3% of appropriation) .....	\$31.3
• Aeronautics (0.5%) .....	\$3.6
• Capital facilities (0.8%) .....	\$5.8
• Contract construction, right of way (61.3%) .....	\$446.2
• Highway operations (27.9%) .....	\$202.9
• Division of Motor Vehicles (5.2%).....	<u>\$37.8</u>

**Total FY20 Appropriation (HB-274):** **\$727.6**

- GARVEE Debt Service.....\$66.5

**Total FY20 Program Funding:** **\$794.1**



(Dollars rounded and in millions)

In addition to the original FY20 appropriation (HB-274), the department submitted an FY20 supplemental appropriation request for the following:

**Motor Vehicles**

- Implementation of HB-179, Electronic Insurance Verification (effective 1-1-2020) .....\$0.3

**Contract Construction**

- Interest, final payouts for the Strategic Initiatives Program Fund .....\$1.0
- Total:** \$1.2

## **GARVEE Program**

GARVEE (Grant Anticipation Revenue Vehicle) is a debt financing instrument allowing states to finance transportation infrastructure projects and pay debt-service and other bond-related expenses with future federal-aid highway apportionments.

In Idaho, only future federal funds are used as security for bonds issued. Idaho code allows debt service payments to a maximum amount of 30 percent of future federal aid, thus limiting the total amount of debt issued.

Prior to 2017, the Idaho Legislature authorized bonding to fund \$858 million in infrastructure improvements across the state. Those improvements to U.S. 95, I-84, Idaho Highway 16, and U.S. 30 were completed in 2016. Debt service on this original programed amount is approximately \$56 million annually.

In conjunction with the Idaho Housing and Finance Association, ITD actively manages the GARVEE bonding program. Based on a review of market rates to previously issued bonds, three different bond refinancings were completed with savings (in present value) of almost \$26 million, all without extending the original maturity dates.

In March 2017, the Idaho Legislature authorized the issuance of up to \$300 million in additional bonds. The Idaho Transportation Board has allocated all the funds for safety and capacity projects on U.S. 95, I-84, and Idaho 16. A total of \$141.5 million in bonds from this authorization were sold in May 2019.

The total estimated debt service on the GARVEE program is \$70 million annually, or 24% of future federal funds (Idaho Code authorizes a maximum of 30%). The final payoff of all bonds is scheduled for July 2039. The total overall weighted interest rate on bonds sold to date is 3.75%.

# Highway and Bridge Facts

## STATE HIGHWAY SYSTEM

### Highways

- Centerline Miles (includes unpaved) ..... 4,983
- Lane Miles (includes unpaved)..... 12,315

### Bridges

- Longer than 20' .....1,340
  - Square Feet of Bridge Deck (Longer than 20') ..... 11.9 million
- Short Span (Between 10' and 20').....490

## LOCAL HIGHWAY SYSTEM\*

(Cities, Counties, and Highway Districts)

### Highways

- Centerline Miles (includes unpaved) ..... 33,781
- Lane Miles (includes unpaved)..... 67,496

### Bridges

- Longer than 20' .....2,421
  - Square Feet of Bridge Deck (Longer than 20') ..... 5.93 million
- Short Span (Between 10' and 20').....1,804

\*Does not include federal, private, state, or tribal infrastructure

## OTHER HIGHWAY SYSTEM FEATURES

<b>Ports of Entry</b> .....	<b>12</b>
• Bonners Ferry.....	U.S. 95/U.S. 2
• Cotterel ( <i>one port on each side of the highway</i> ) .....	I-84/I-86
• East Boise ( <i>one port on each side of the highway</i> ).....	I-84
• Haugan (Montana) .....	I-90
• Hollister .....	U.S. 93
• Horseshoe Bend* .....	SH-55
• Huetter .....	I-90
• Inkom ( <i>one port on each side of the highway</i> ) .....	I-15
• Lewiston .....	U.S. 12/U.S. 95
• Lewiston Hill* .....	U.S. 95
• Marsing.....	U.S. 55/U.S. 95
• Sage Junction .....	I-15

\*Secondary port-of-entry facility

**Rest Areas .....34**

- Big Lost River .....U.S. 20/26
- Bliss (2) .....I-84
- Blacks Creek (2).....I-84
- Bonners Ferry (Oasis Rest Area).....US-95B
- Camas Prairie (Oasis Rest Area) .....U.S. 95
- Cherry Creek..... I-15
- Clark Hil.....U.S. 26
- Coldwater Hill .....I-86
- Cotterell (2) .....I-84
- Dubois .....I-15
- Hagerman.....U.S. 30
- Huetter (2) .....I-90
- Juniper (2) .....I-84
- Lenore .....U.S. 12
- Lolo Pass.....U.S. 12
- Lost Trail Pass (Montana) .....U.S. 93
- Malad Summit ..... I-15
- Massacre Rocks.....I-86
- McCammon (Oasis Rest Area) .....I-15B
- Midvale Hill.....U.S. 95
- Mineral Mountain.....U.S. 95
- Mr. Gas Travel Center (Oasis Rest Area).....I-84
- North Blackfoot (2) .....I-15
- Sheep Creek .....U.S. 95
- Snake River View.....I-84
- Timmerman .....U.S. 20
- Traveler’s Oasis (Oasis Rest Area) .....I-84
- Valley County Store (Oasis Rest Area) .....I-84

**Idaho Byways (2,523 miles) .....31**

- City of Rocks Back Country Byway.....49 miles
- Elk River Back Country Byway .....57 miles
- Fort Henry Historic Byway .....97 miles
- Gold Rush Historic Byway .....42 miles
- Hells Canyon Scenic Byway .....62 miles
- Lake Coeur d'Alene Scenic Byway .....36 miles
- Lewis and Clark Back Country Byway .....39 miles
- Lost Gold Trails Loop .....48 miles
- Lower Payette River Heritage Byway .....52 miles
- Main Oregon Trail Back Country Byway .....102 miles
- Mesa Falls Scenic Byway .....29 miles
- Northwest Passage Scenic Byway .....202 miles
- Oregon Trail - Bear Lake Scenic Byway .....110 miles
- Owyhee Uplands Back Country Byway .....101 miles
- Panhandle Historic Rivers Passage.....28 miles
- Payette River Scenic Byway .....112 miles
- Peaks to Craters Scenic Byway .....140 miles
- Pend Oreille Scenic Byway.....33 miles
- Pioneer Historic Byway .....127 miles

- Ponderosa Pine Scenic Byway .....131 miles
- Sacajawea Historic Byway .....132 miles
- Salmon River Scenic Byway .....162 miles
- Sawtooth Scenic Byway .....116 miles
- St. Joe River Scenic Byway .....89 miles
- Snake River Canyon Scenic Byway.....68 miles
- Teton Scenic Byway .....69 miles
- Thousand Springs Scenic Byway .....68 miles
- Western Heritage Historic Byway .....47 miles
- White Pine Scenic Byway .....83 miles
- Wild Horse Trail Scenic Byway .....59 miles
- Wildlife Canyon Scenic Byway.....33 miles

---

## Motor Vehicle Facts

### CY19 DRIVER LICENSES AND ID CARDS

- Licensed Drivers.....1,284,275
- Licenses/IDs Issued ..... 438,416
- Out-of-state driver licenses surrendered to Idaho .....54,072
- Idaho driver licenses surrendered to other states .....35,390

### CY18 VEHICLE REGISTRATION TRANSACTIONS

- Passenger cars .....1,413,654
- Trucks .....172,635
- Miscellaneous motor vehicles .....52,508
- Trailers.....224,740

**Total Motor Vehicles and Trailers:       1,863,537**

# Topic

## County License Plate Identifiers

County	Prefix	County	Prefix	County	Prefix
Ada	1A	Cassia	4C	Lewis	3L
Adams	2A	Clark	5C	Lincoln	4L
Bannock	1B	Clearwater	6C	Madison	1M
Bear Lake	2B	Custer	7C	Minidoka	2M
Benewah	3B	Elmore	E	Nez Perce	N
Bingham	4B	Franklin	1F	Oneida	1O
Blaine	5B	Fremont	2F	Owyhee	2O
Boise	6B	Gem	1G	Payette	1P
Bonner	7B	Gooding	2G	Power	2P
Bonneville	8B	Idaho	I	Shoshone	S
Boundary	9B	Jefferson	1J	Teton	1T
Butte	10B	Jerome	2J	Twin Falls	2T
Camas	1C	Kootenai	K	Valley	V
Canyon	2C	Latah	1L	Washington	W
Caribou	3C	Lemhi	2L		

# Aeronautics Facts

## Airports and Airstrips

- Unrestricted public-use airports.....126
- Reliever airport (Caldwell) .....1
- General aviation airports .....29
- Community airports .....31
- State-operated airstrips .....31
- U.S. Forest Service airstrips.....27
- Primary Service Airports.....7
  - Boise Air Terminal, Boise
  - Fanning Field, Idaho Falls
  - Friedman Memorial Airport, Hailey
  - Joslin Field/Magic Valley Regional Airport, Twin Falls
  - Lewiston/Nez Perce County Airport, Lewiston
  - Pocatello Regional Airport, Pocatello
  - Pullman-Moscow Regional Airport, Pullman, Washington

## Pilots and Aircraft

- Registered aircraft (approx.).....2,780
- Pilots (approx.) .....5,095
- Aircraft registration fee, per pound gross maximum weight .....3¢  
*(Minimum annual fee is \$20, maximum annual fee is \$600)*

## Fuel Taxes\*

- Federal aviation gasoline tax (per gallon) .....19.4¢
- Federal jet fuel tax\*\* (per gallon).....4.4¢
- State aviation gasoline tax (per gallon) .....7¢
- State jet fuel tax (per gallon) .....6¢

\* The Division of Aeronautics' primary revenue source is aviation fuel taxes.

\*\*For commercial use.

## Public Transportation Facts

- Metropolitan Planning Organizations ..... 5
- Public Transportation Providers ..... 63
- Counties Served by Public Transportation Providers .....44
- Trips Taken Annually in Idaho via Public Transportation.....3.5\*

\* Million

---

## Highway Safety Facts (Calendar Year 2017)

- Total fatal crashes ..... 215
  - Economic costs of 215 fatal crashes..... \$2.39 billion
  - Percent of fatal crashes related to impaired driving\* ..... 34%
  - Percent of fatal crashes related to distracted driving\* ..... 19%
- Total fatalities..... 234
  - Fatalities related to impaired driving\* ..... 77
  - Fatalities related to aggressive driving\* ..... 74
  - Motorcycle fatalities ..... 38
  - Pedestrian fatalities ..... 18
  - Bicycle fatalities ..... 2
- Percent of people in Idaho wearing seat belts ..... 85.4%

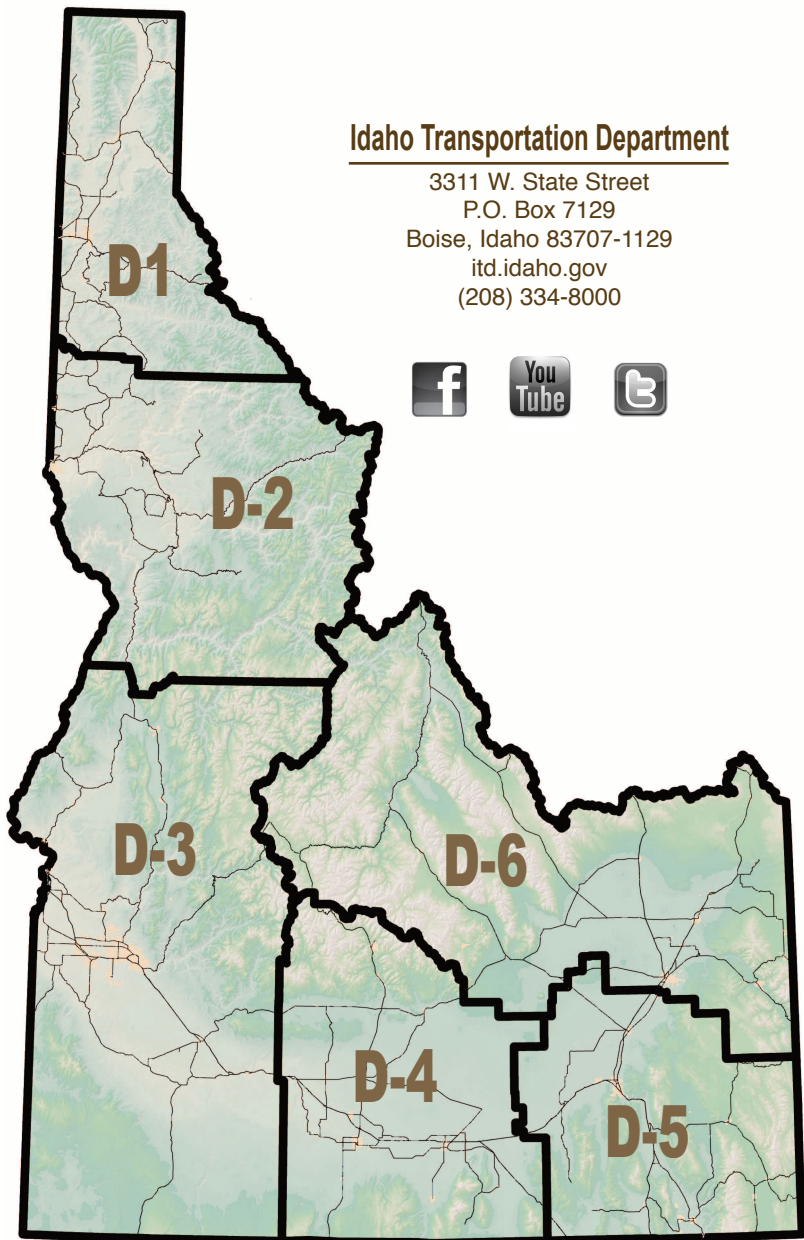
*\*Crashes can involve several contributing factors, including impairment, aggressive driving, and distracted driving.*





## Idaho Transportation Department

3311 W. State Street  
P.O. Box 7129  
Boise, Idaho 83707-1129  
[itd.idaho.gov](http://itd.idaho.gov)  
(208) 334-8000



[itd.idaho.gov](http://itd.idaho.gov)