

Welcome

Thank you for attending tonight's public open house. The purpose of this open house is to give you an opportunity to:

- Review the proposed design for the US-95 Bridges Improvement project
- Learn what to expect during construction



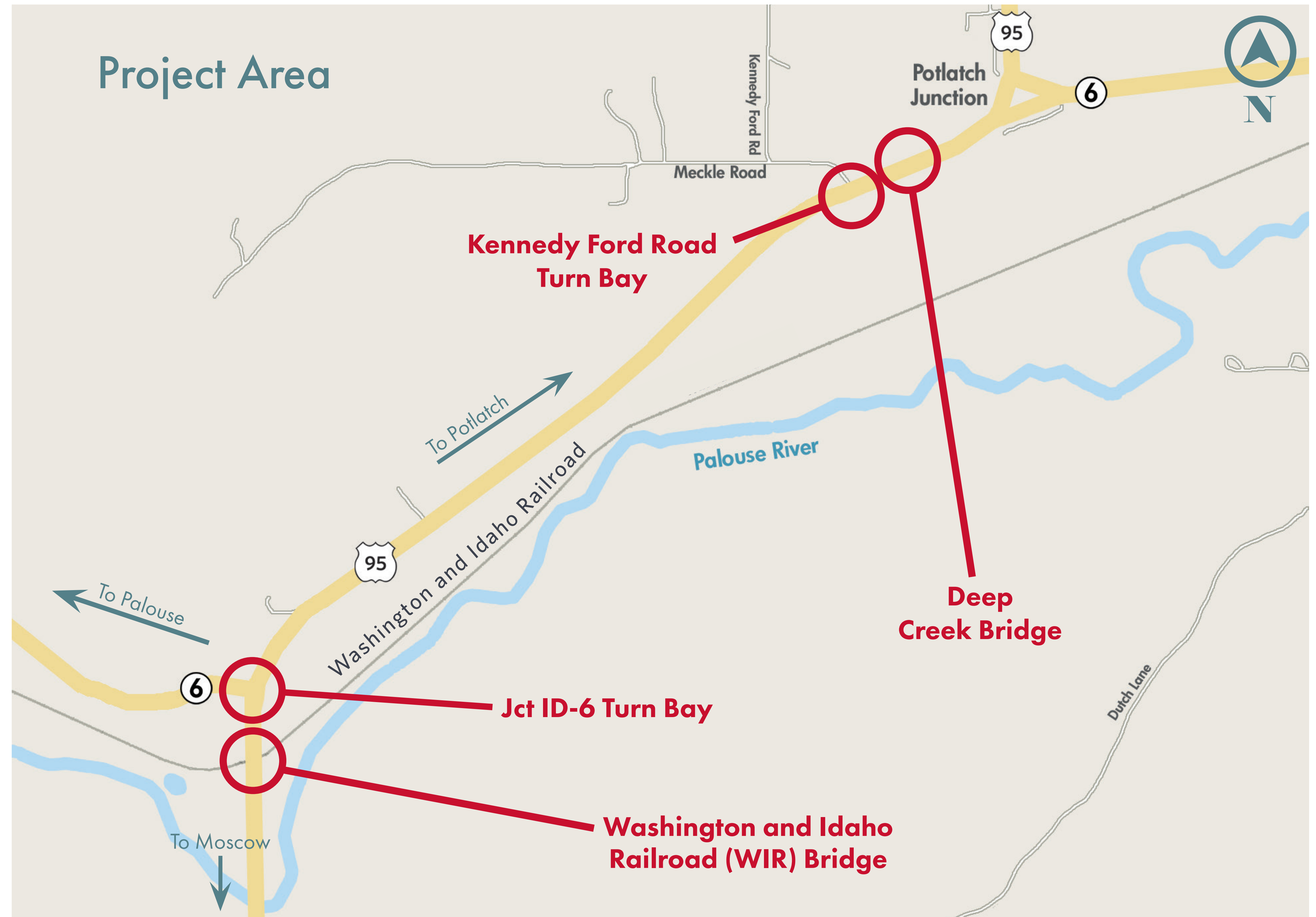
**Your Safety • Your Mobility
Your Economic Opportunity**



US-95 Bridges Improvement Project

Project Objective

To improve safety on US-95 by replacing aging bridges and adding turn lanes at two intersections.



Environmental Evaluation

As part of the federal-aid process, ITD must gather information on existing natural and physical resources as well as the environment in the project area. The project will prepare an environmental categorical exclusion to document project effects on the environment.

Environmental Resources in the project area

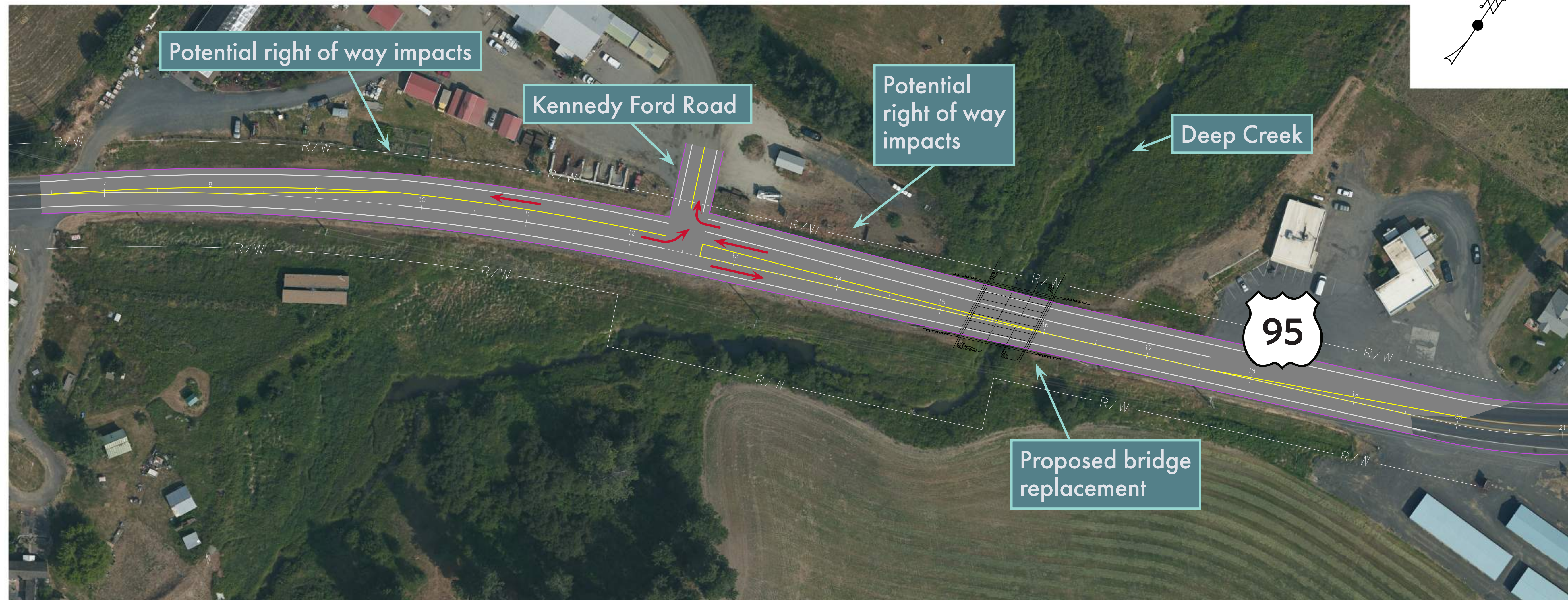
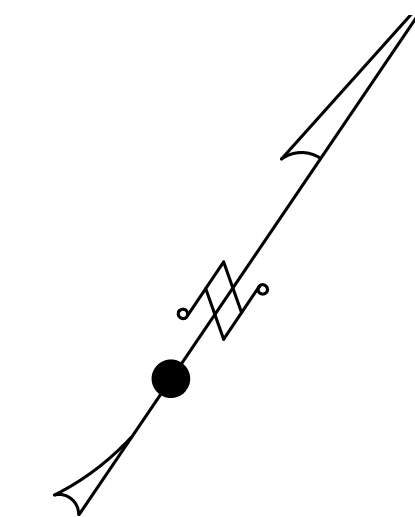
- Deep Creek
- Wetlands along Deep Creek
- Floodplains
- Cultural/historic bridges: WIR and Deep Creek bridges

Environmental Process

- Inventory environmental resources that could be impacted
- Avoid or minimize impacts where possible
- Section 4(f) Evaluation required to evaluate impacts and possible avoidance of historic bridges
- Environmental evaluation for full range of resources prepared for National Environmental Policy Act (NEPA) compliance
- Permitting for Deep Creek Bridge and floodplain impacts

Deep Creek Bridge

Alternative 1 - Selected Alternative
Right and left turn lane at US-95 and Kennedy Ford Road intersection



LEGEND

- ← Travel Direction
- R/W- Existing Right of Way
- █ Proposed Pavement

WIR Bridge & Jet ID- 6 Turn Bay

Alternative 1 - 60 mph

Alternative 2 - 55 mph

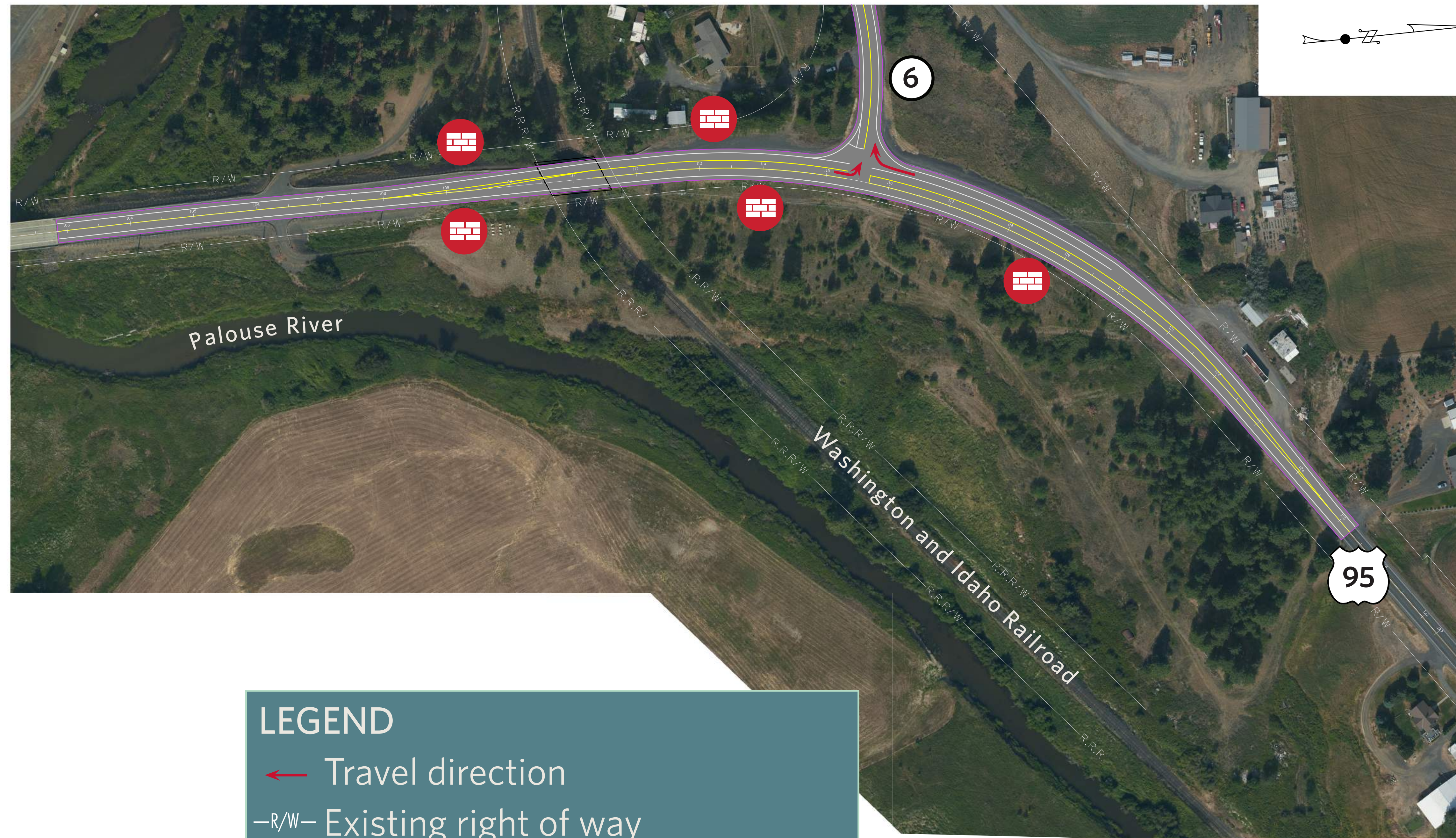


LEGEND





- R/W- Existing Right of Way
- Proposed Pavement

WIR Bridge & Jet ID- 6 Turn Bay

Alternative 3 - 55 mph Reverse Curve
Selected Alternative



LEGEND

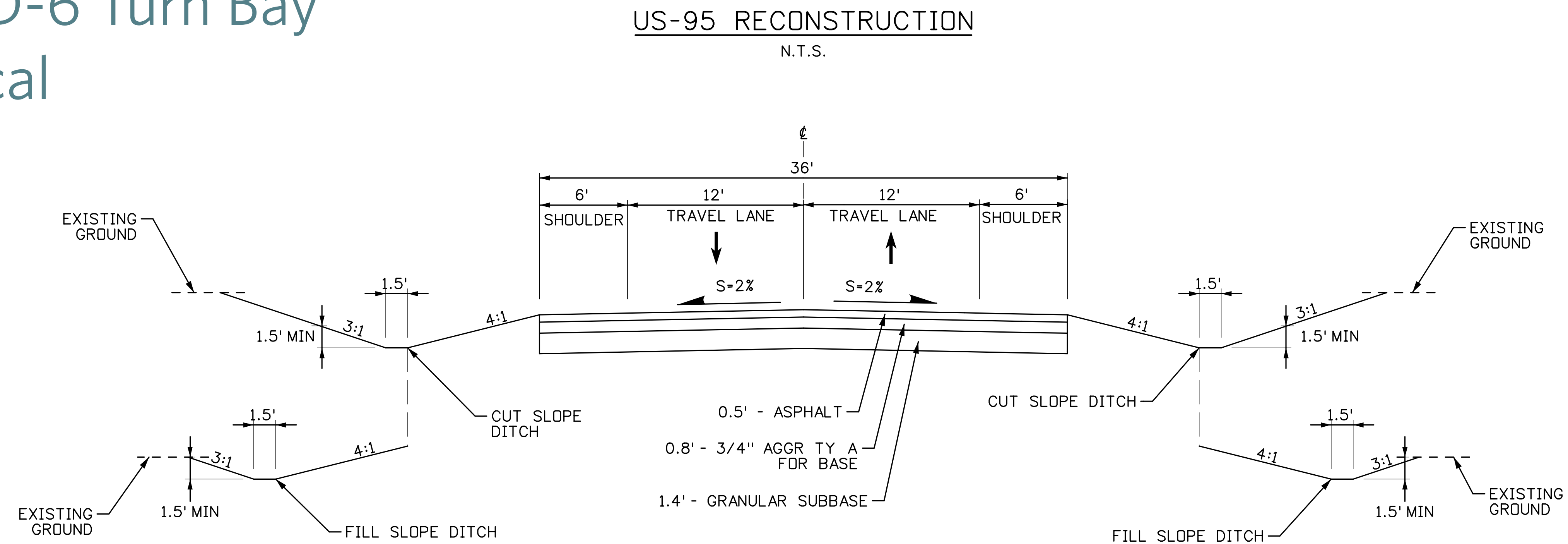
-  Travel direction
-  Existing right of way
-  Proposed pavement
-  Potential retaining wall locations to minimize right of way impacts

Project Staging

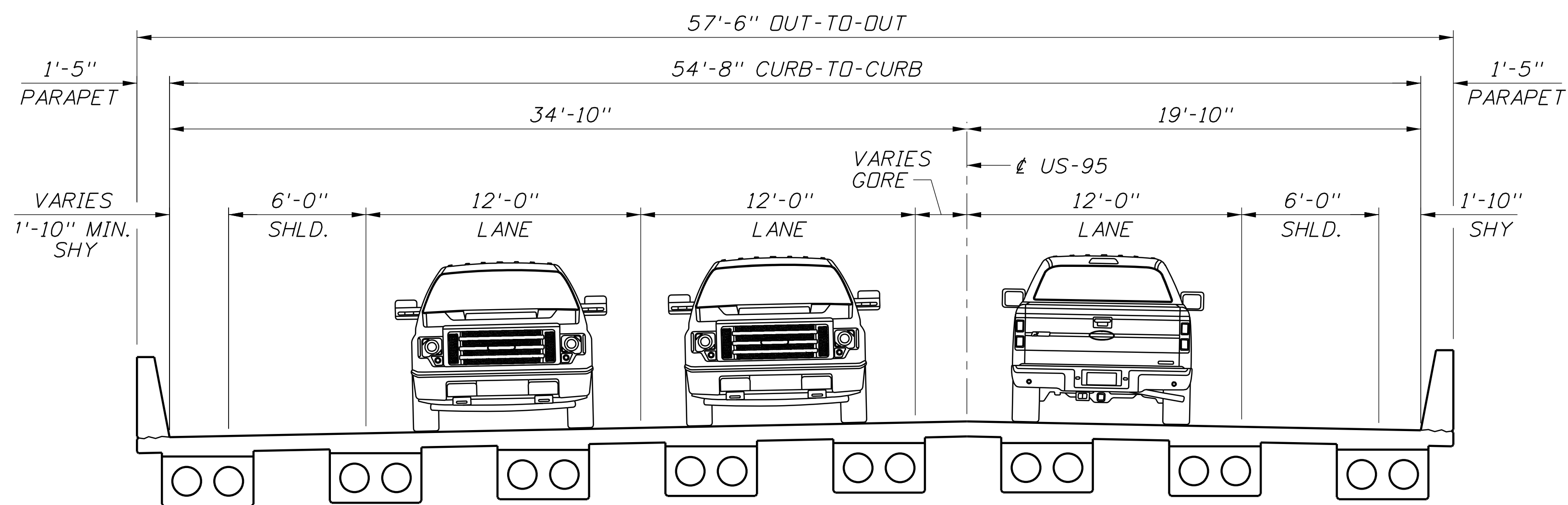


Typical Sections

Proposed Jct ID-6 Turn Bay Roadway Typical



Proposed Deep Creek Bridge Typical



Proposed WIR Bridge Typical

