

IDAHO TRANSPORTATION BOARD

EXHIBITS #388 - #398

2010

EXHIBIT NUMBER	DATE	DESCRIPTION
388	2/10	Safety Rest Areas and Oasis Partnership Program chart and map
389	4/10	FY09-14 Forest Highway Program changes
390	6/10	2015 Rural Functional Classification Map
391	7/10	FY12 and FY13 Safe Routes to School projects
392	8/10	2010-2011 winter maintenance standards map
393	8/10	FY12-17 Capital Facilities Program
394	8/10	FY10 accounts to be written off (over \$1,000)
395	8/10	FY10 end-of-year adjustments to federal-aid program (Anticipated Removals and Delays" and "Additional Requests")
396	8/10	FY12 budget summary and certification
397	9/10	Official minute entry: addition of Wendell to Buhl route to state highway system (extension of SH-46)
398	10/10	FY10 certification of receipts and disbursements

2011
SAFETY REST AREAS AND OASIS PARTNERSHIPS PROGRAM

BASIC PLUS – a public roadside facility that is located in areas directly accessible to low to a medium volume State or US highways. A Basic Plus Safety Rest Area will provide the basic human needs to the traveling public plus furnish other amenities such as potable water, flush toilets, and picnic tables.

DELUXE – a public roadside facility that is located in areas directly accessible to a medium to high volume State, US, or Interstate highways. A Deluxe Safety Rest Area will include all of the amenities of a Basic Plus Safety Rest Area plus vending machines, designated pet areas and traveler information. The preferred design includes vestibules, where climactic conditions warrant, and at least one family-assist restroom to accommodate people with small children and those assisting others with disabilities.

GATEWAY – a public roadside facility that is located in areas directly accessible to a medium or high volume State, US or Interstate highway and located near important regions of the state or tourist entrances into the state. A Gateway Safety Rest Area will include all of the amenities of a DELUXE Safety Rest Area plus adequate space for a staffed Visitor Information Center.

SAFETY REST AREA CLASSIFICATION

Safety Rest Area Rehabilitation						
PROG FY	REST AREA TYPE	REST AREA LOCATION	DIST	RTE	APPROX. M.P.	ADT 2008
MR	Basic Plus	Sheep Creek	2	US-95	189	2,200
2012	Basic Plus	Mineral Mountain	2	US-95	371	2,100
*	Basic Plus	Lenore	2	US-12	28	3,100
MR	Deluxe	Midvale	3	US-95	101	2,200
MR	Deluxe	Blacks Creek EB & WB	3	1-84	62	19,500
MR	Gateway	Snake River View	3	1-84	1	15,500
*	Basic Plus	Jct. US-93 WB	4	1-84	171	21,000
2010	Basic Plus	Hagerman	4	US-30	184	2,000
2013	Basic Plus	Cottrell EB & WB	4	1-84	229	6,600
MR	Deluxe	Bliss EB & WB	4	1-84	133	13,000
MR	Deluxe	Juniper NB & SB	4	1-84	269	6,500
MR	Gateway	Cherry Creek	5	1-15	7	8,700
MR	Basic Plus	Clark Hill	6	US-26	357	3,700

Safety Rest Area Reconstruction						
PROG FY	REST AREA TYPE	REST AREA LOCATION	DIST	RTE	APPROX. M.P.	ADT 2008
*	Deluxe	Huelter WB	1	1-90	8	50,000
*	Gateway	Huelter EB	1	1-90	8	50,000
2009	Deluxe	Timmerman	4	US-20	177/101	1,500
*	Deluxe	Malad Summit	5	1-15	/SH-75	/3,400
*	Deluxe	North Blackfoot NB & SB	5	1-15	25	7,900
*	Deluxe	Coldwater	5	1-86	101	19,000
*	Deluxe	Massacre Rocks	5	1-86	19	6,100
MR	Deluxe	Big Lost River	6	1-86	31	6,100
2011	Gateway	Dubois	6	US-20/26	265	1,500
			6	1-15	167	3,000

Public/Private & Oasis Partnerships					
PROG FY	OASIS STOP LOCATION	DIST	RTE	APPROX. M.P.	FUNDING
MR	Oasis Partnership at Flying J Truck Stop at McCammon	5	I-15B	4	4,500 ADT
Annually	Public/Private Partnership Development	All	Statewide		\$50,000.00

Partnership Rest Area/Visitor Center

PROG FY	VISITOR CENTER LOCATION	PARTNER	DIST.	RTE	APPROX. M.P.	FUNDING
MR	Visitor Center at Bonners Ferry	City of Bonners Ferry	1	US-95B	507	13,500 ADT
MR	Rest Area at Lost Trail Pass	Montana Department of Transportation	6	US-93	350	790 ADT
MR	Rest Area at Lolo Pass	U.S. Forest Service	2	US-12	174	\$13,000 530 ADT

Proposed Safety Rest Areas (Horizons)

PROG FY	REST AREA TYPE	REST AREA LOCATION	DIST	RTE	APPROX. M.P.	ADT 2008
*	Basic Plus	Cat Creek	4	US-20	137	1,400
*	Deluxe	Sage Junction	6	SH-33	59	1,400
*	Gateway	Hollister	4	US-93	26	4,100

Proposed Public/Private/Government Partnerships

PROG FY	PUBLIC/PRIVATE STOP LOCATION	DIST	RTE	APPROX. M.P.	FUNDING
*	Cougar Mountain Lodge	3	SH-55	97	\$350,000 3,700 ADT
*	ION Truck Stop	3	US-95/SH-55	26/0	\$350,000.00 2,400 ADT
*	Carnas Prairie	2	US-95	252	\$300,000 3,800 ADT

* – Indicates projects are in horizons, not currently programmed or not been assigned a specific project year. Safety Rest Area(s) may be moved ahead of schedule or moved to a different category based on amount of funds available in Safety Rest Area. Oasis Partnership Program, Public/Private Partnership Programs, delays in projects, and facility assessments.

MR – Indicates rest areas that currently Meet Requirements and are included in the normal cycle and schedule for rehabilitation/reconstruction program.

The Inkorn Rest Area has been closed and replaced by the Oasis Partnership at McCammon.

EXHIBIT 388

February 2010



IDAHO

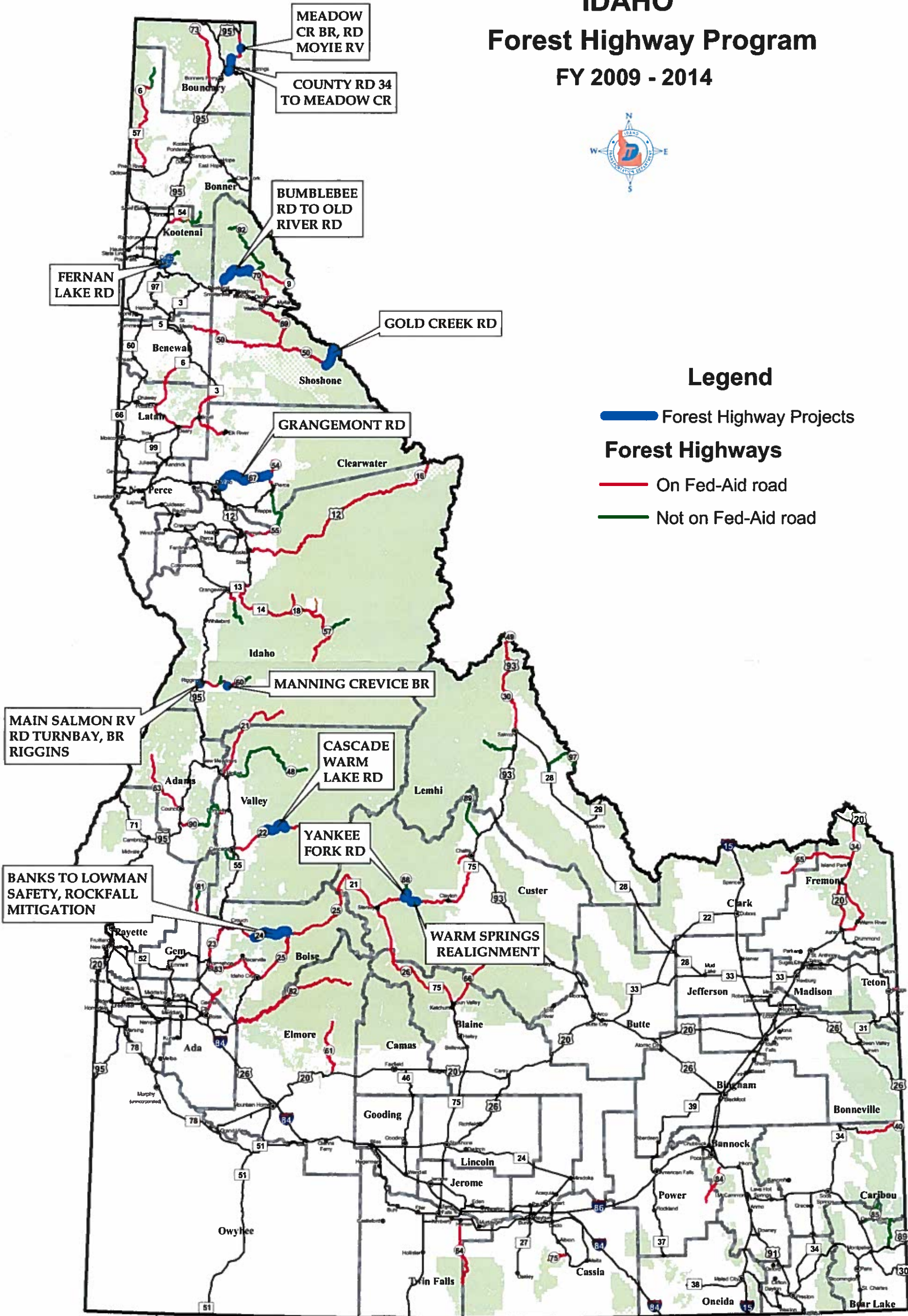
Forest Highway Program

FY 2009 - 2014

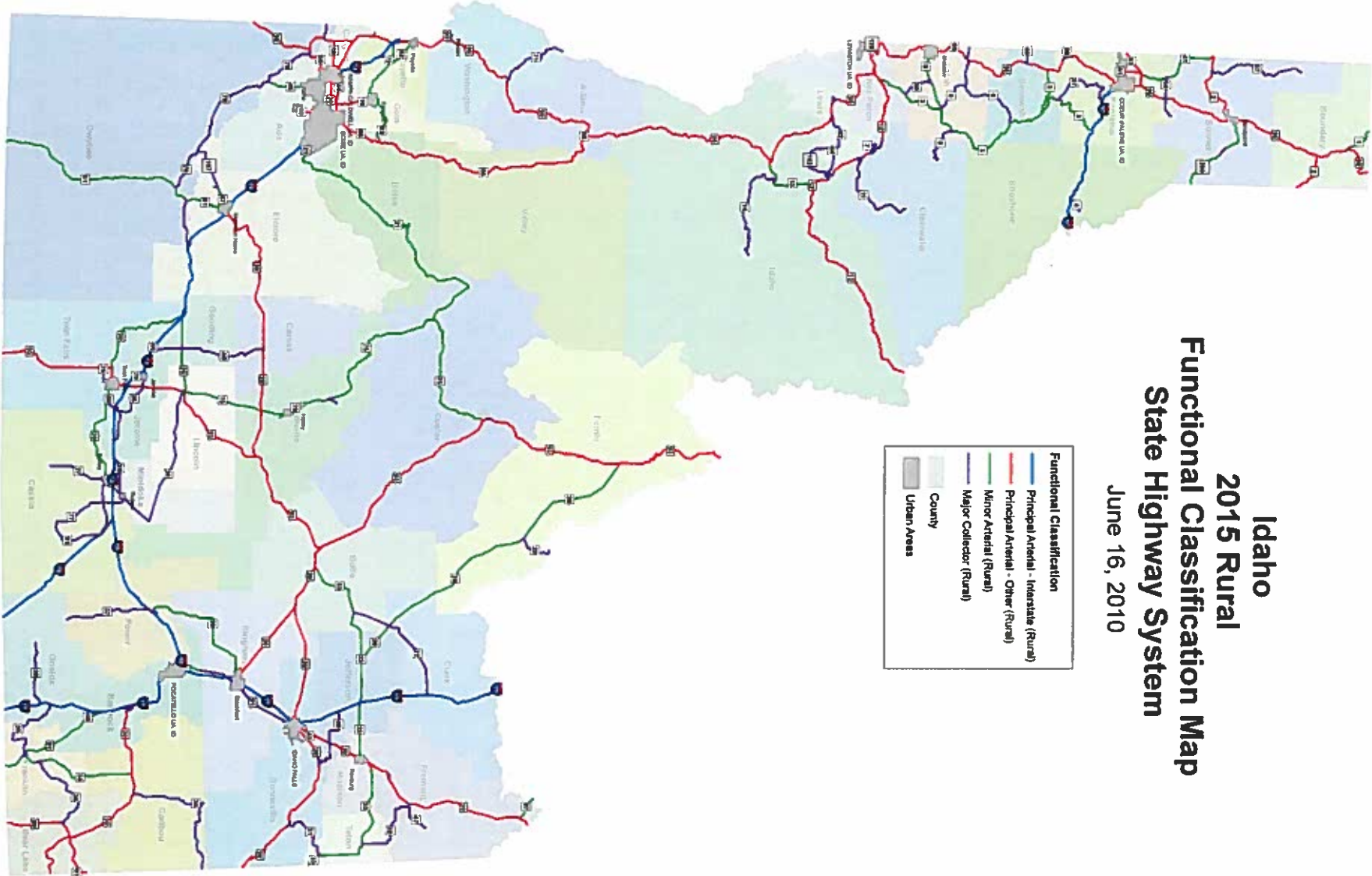


Legend

- █ Forest Highway Projects
- Forest Highways**
- █ On Fed-Aid road
- █ Not on Fed-Aid road



Idaho
2015 Rural
Functional Classification Map
State Highway System
June 16, 2010



\$948,000 Available FY12					
\$948,000 Available FY13					
	Education	Construction	Construction		
SPONSOR	FY12	FY12	FY13		
Sandpoint Sidewalk Washington ES	0	0	17,000		
Ketchum/MRTA Street lighting 1st Av.	0	0	62,497		
Driggs Sidewalk on 5th St.	4,900	100,000			
Kooskia Sidewalk from Hwy 13 to Pine Av.	1000	95,650			
American Falls Sidewalk Falls Ave. & Lincoln St.	0	0	99,940		
Treasure Valley YMCA Coordinator	50,000	0			
Middleton Sidewalk Hwy. 44	2,500	99,768			
Nampa Light Birch ES & 15 schools xwalk paint	30,680	91,836			
Menan School District Multi use path school property	700	7,455			
Wildier Sidewalk on Avenue C	1,900	100,000			
Bellevue/MRTA RRFBs on Hwy 75	0	38,301			
BMO Bonneville Metropolitan Planning Coordinator	40,000	0			
Moscow/UofI/Mini-Grant Coordinator & sidewalk D St.	25,384	0	99,880		
Lake Pend Oreille School Dist Multi-use path on school property	0	0	90,330		
Lewiston/McSorley Coordinator & upgrade school signage MRTA	13,000	27,500			
Mountain Rides Transportation Coordinator Blaine Co. Schools	25,000	0			
Hailey/MRTA Sidewalk on Elm St. & RRFB Hwy 75	0	0	65,852		
SR2S Website on www.l-way.org ITD overhead& consultants	195,064 12,426	560,510	435,499		
Total awards	\$207,490	\$ 740,510	\$ 615,000		
Program funding level requirements	21.00%	78.00%			



State of Idaho

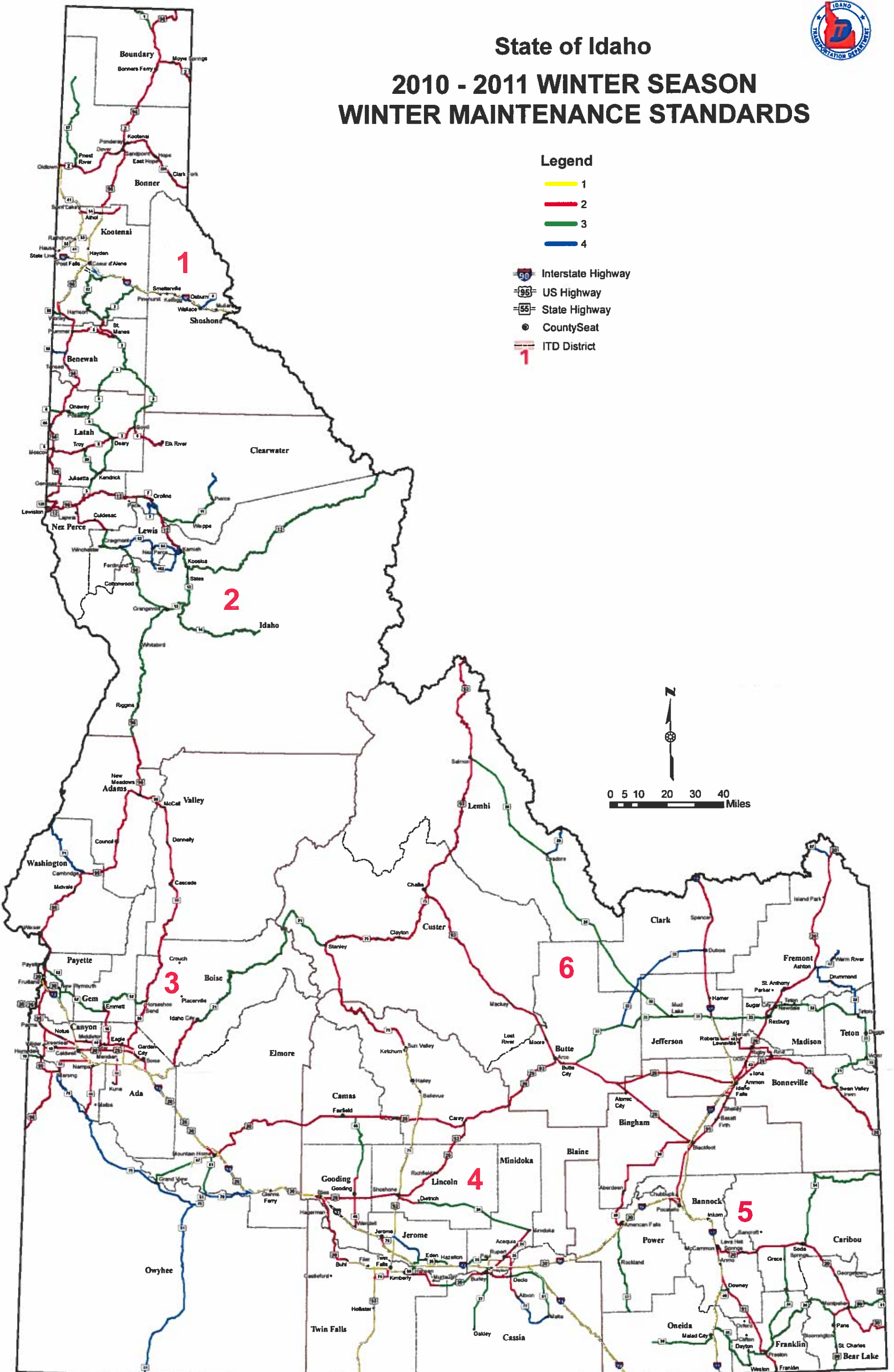
2010 - 2011 WINTER SEASON

WINTER MAINTENANCE STANDARDS

Legend

- 1
- 2
- 3
- 4

- Interstate Highway
- US Highway
- State Highway
- County Seat
- ITD District



IDAHO TRANSPORTATION DEPARTMENT
PROPOSED SIX YEAR CAPITAL FACILITIES PROGRAM
FISCAL YEARS 2012 THROUGH 2017

Agency Approval _____
David Tolman, Administrator

Dist	FY 2012 Project Description	Cap Cost	FY 2013 Project Description	Cap Cost	FY 2014 Project Description	Cap Cost	FY 2015 Project Description	Cap Cost	FY 2016 Project Description	Cap Cost	FY 2017 Project Description	Cap Cost
1	Plummer Mice Addition & Re-roof	250	Coeur d'Alene Main Office Re-roof	120	Coeur d'Alene Main Office Moisture Remediation	300	Coeur D'Alene Shop & Supply Re-roof	190	Ramskull Equipment Storage Shed	80	Salt Unloading Facilities at Mallen, Sandpoint & Coeur d'Alene 40 Acres	240
	Alteration and Repair	155	Alteration and Repair	155	Alteration and Repair	155	Alteration and Repair	155	Alteration and Repair	155	Alteration and Repair	155
2	Kooskia Equipment Storage Shed	300	Kendrick Salt Shed Lewiston Equipment Storage Shed	55 120	Reeds Bar Land Purchase	120	Reeds Bar Sand Shed	100	Reeds Bar Maintenance Building Ponlatch Salt Shed	600 60		
	Alteration and Repair	155	Alteration and Repair	155	Alteration and Repair	155	Alteration and Repair	155	Alteration and Repair	155	Alteration and Repair	155
3	Mountain Home Mice Addition D-3 Truck Wash	350 250	Lowman Bankhouse New Murphy Mice Building	130 550	Glenns Ferry Sand Shed	100	Orchard Sand Shed New Horseshoe Bend Mice Building	120 550	Hazmett Sand Shed Simco Sand Shed	100 80	Cambridge Sand Shed SH-71 MIP 26.7 Sand Shed New Garden Valley Mice Building	110 110 740
	Alteration and Repair	155	Alteration and Repair	155	Alteration and Repair	155	Alteration and Repair	110	Alteration and Repair	155	Alteration and Repair	155
4	Buhl Sand Shed Rupert Sand Shed	85 85	Stanley Mice Addition	295	Shoshone Mice Building and Truck Wash	650	Carey Mice Building Addition	250	Wendell Sand Shed	80		
	Alteration and Repair	155	Alteration and Repair	155	Alteration and Repair	155	Alteration and Repair	155	Alteration and Repair	155	Alteration and Repair	155
5	Malad Equipment Storage Shed	140	Pocatello Welding Shop	300	Pocatello Main Office Re-roof Wayan Sand Shed	150 100			Pocatello Truck Wash	260	Montpelier Sand Shed	110
	Alteration and Repair	155	Alteration and Repair	155	Alteration and Repair	155	Alteration and Repair	155	Alteration and Repair	155	Alteration and Repair	155
6	Island Park Trailer Shelters	160	Ririe Steel Sand Shed	100	Driggs Trailer Shelters Sugar City Steel Sand Shed	170 140	Rigby Equipment Storage Shed Gibbonsville Steel Sand Shed	110 100	Island Park Steel Sand Shed Idaho Falls Equip Storage Shed	110 150	IDL Steel Sand Shed	110
	Alteration and Repair	155	Alteration and Repair	155	Alteration and Repair	155	Alteration and Repair	155	Alteration and Repair	155	Alteration and Repair	155
8	Alteration and Repair	50	Alteration and Repair	50	Alteration and Repair	50	Alteration and Repair	50	Alteration and Repair	50	Alteration and Repair	50
9	Statewide Security Systems Upgrade	150					Annex Re-roof	300	Annex HVAC Upgrade (Phase 1)	120	Annex HVAC Upgrade (Phase 2)	120
	Alteration and Repair	100	Alteration and Repair	100	Alteration and Repair	100	Alteration and Repair	100	Alteration and Repair	100	Alteration and Repair	100
	Statewide Preventative Maintenance	0	Statewide Preventative Maintenance	100	Statewide Preventative Maintenance	40	Statewide Preventative Maintenance	95	Statewide Preventative Maintenance	130	Statewide Preventative Maintenance	230
	Total Program	2,850		2,850		2,850		2,850		2,850		2,850

ACCOUNTS TO BE WRITTEN OFF

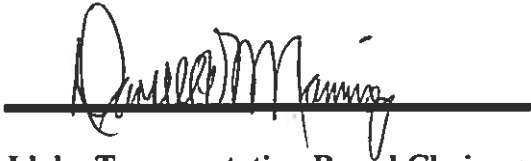
Fiscal Year 2010
Over (\$1,000)


Account	Name	Amount	Mileage Tax	Registration	Returned Check	Audit	Reinstatement	Damage Claim	Final Comments
1100115	KENNETH P MERTEN	\$6,976.21	\$0.00	\$0.00	\$0.00	\$0.00	\$0.00	\$6,976.21	Past statute of limitations.
2000564	RANDY D MATHIS	\$5,109.98	\$0.00	\$0.00	\$0.00	\$0.00	\$0.00	\$5,109.98	Past statute of limitations.
2000560	SILVER TRUCKING INC	\$4,354.18	\$0.00	\$0.00	\$0.00	\$0.00	\$0.00	\$4,354.18	Past statute of limitations.
4100058	FL TRANSPORTATION	\$3,425.69	\$0.00	\$0.00	\$0.00	\$0.00	\$0.00	\$3,425.69	Past statute of limitations.
1920022	INTERMOUNTAIN COMMODITIES CO LLC	\$3,245.51	\$0.00	\$2,123.66	\$1,081.85	\$0.00	\$40.00	\$0.00	Past statute of limitations.
2100025	CYNTHIA M STORMS	\$3,018.11	\$0.00	\$0.00	\$0.00	\$0.00	\$0.00	\$3,018.11	Past statute of limitations.
1100108	RAY J GOMEZ	\$2,997.74	\$0.00	\$0.00	\$0.00	\$0.00	\$0.00	\$2,997.74	Past statute of limitations.

Account	Name	Amount	Mileage Tax	Registration	Revised Check	Audit	Reinstatement	Damage Claim	Final Comm
3161560	GONZALEZ INC	\$2,899.09	\$0.00	\$1,899.99	\$959.10	\$0.00	\$40.00	\$0.00	Past statute of limitations.
3100064	JAMES COWNS	\$2,876.10	\$0.00	\$0.00	\$0.00	\$0.00	\$0.00	\$2,876.10	Past statute of limitations.
2100005	KENNETH B HUDDLESTON	\$2,616.55	\$0.00	\$0.00	\$0.00	\$0.00	\$0.00	\$2,616.55	Past statute of limitations.
2440369	GRAVEL WORKS	\$2,502.00	\$0.00	\$1,342.00	\$1,120.00	\$0.00	\$40.00	\$0.00	Past statute of limitations.
6100147	ADAM L PELTON	\$2,415.65	\$0.00	\$0.00	\$0.00	\$0.00	\$0.00	\$2,415.65	Past statute of limitations.
3100010	SHONNA HOUSTON	\$2,096.12	\$0.00	\$0.00	\$0.00	\$0.00	\$0.00	\$2,096.12	Past statute of limitations.
6100022	OLEGERIO PALACIOS	\$1,964.92	\$0.00	\$0.00	\$0.00	\$0.00	\$0.00	\$1,964.92	Past statute of limitations.
6100151	CINDY EDELMAN	\$1,827.26	\$0.00	\$0.00	\$0.00	\$0.00	\$0.00	\$1,827.26	Past statute of limitations.
3100183	ZACHARY LEIJA	\$1,537.73	\$0.00	\$0.00	\$0.00	\$0.00	\$0.00	\$1,537.73	Past statute of limitations.

Account	Name	Amount	Mileage Tax	Registration	Re Check	Audit	Reinstatement	Damage Claim	Final Comm
1636693	FAT CAT INC	\$1,510.60	\$0.00	\$1,470.60	\$0.00	\$0.00	\$40.00	\$0.00	Past statute of limitations.
0138404	HUBERT JENNEKSENS INC	\$1,484.46	\$0.00	\$1,444.46	\$0.00	\$0.00	\$40.00	\$0.00	Past statute of limitations.
1085220	AG TRUCKING LLC	\$1,455.25	\$0.00	\$1,415.25	\$0.00	\$0.00	\$40.00	\$0.00	Past statute of limitations.
3100023	ROBERT K RINEHART	\$1,423.20	\$0.00	\$0.00	\$0.00	\$0.00	\$0.00	\$1,423.20	Past statute of limitations.
4100061	HUGH B WALLNUTT	\$1,417.82	\$0.00	\$0.00	\$0.00	\$0.00	\$0.00	\$1,417.82	Past statute of limitations.
3100180	ROBERT E COZINE	\$1,406.25	\$0.00	\$0.00	\$0.00	\$0.00	\$0.00	\$1,406.25	Past statute of limitations.
2100040	ROBERT CERVANTES	\$1,329.19	\$0.00	\$0.00	\$0.00	\$0.00	\$0.00	\$1,329.19	Past statute of limitations.
0487009	LOST RIVER EXPRESS	\$1,303.85	\$0.00	\$654.35	\$609.50	\$0.00	\$40.00	\$0.00	Past statute of limitations.
5100010	ANTHONY A PULLEY	\$1,210.91	\$0.00	\$0.00	\$0.00	\$0.00	\$0.00	\$1,210.91	Past statute of limitations.

Account	Name	Amount	Mileage Tax	Registration	Revised Check	Audit	Reinstatement	Damage Claim	Final Comm.
5100266	DALLEN P COATES	\$1,168.93	\$0.00	\$0.00	\$0.00	\$0.00	\$0.00	\$1,168.93	Past statute of limitations.
5001465	DAVIS, ERIC	\$1,152.81	\$0.00	\$0.00	\$0.00	\$0.00	\$0.00	\$1,152.81	Past statute of limitations.
1909967	QUIK FREIGHT SYSTEMS	\$1,120.00	\$0.00	\$1,010.00	\$70.00	\$0.00	\$40.00	\$0.00	Past statute of limitations.
5100024	DARIN C ESTERHOLDT	\$1,113.83	\$0.00	\$0.00	\$0.00	\$0.00	\$0.00	\$1,113.83	Past statute of limitations.
1132598	HEMPHILL LOGGING	\$1,098.37	\$0.00	\$1,058.37	\$0.00	\$0.00	\$40.00	\$0.00	Past statute of limitations.
0209593	STIFORP INC	\$1,057.49	\$0.00	\$1,017.49	\$0.00	\$0.00	\$40.00	\$0.00	Past statute of limitations.
Total of Accounts: 31		\$69,115.80	\$0.00	\$13,436.17	\$3,840.45	\$0.00	\$400.00	\$51,439.18	

Approved by: 
Idaho Transportation Board Chairman


Date

WHO	KEY NO	ROUTE	LOCATION	PROGRAM YEAR	PROGRAM	FY10 \$000	PHASE	* ACTION
Estimated Delays/Removals (Actions Performed on August 20th)								
State								
1	09771	SH 53	CORRIDOR STUDY	2008	SYSTEMS PLANNING	0	CN	Removal
1	10504	STATE	FY10 D1 PLANNING SUPPORT	2010	SYSTEMS PLANNING	39	PC/PC	Delay
1	11222	STATE	FY09 D1 PLANNING SUPPORT	2010	SYSTEMS PLANNING	50	PE/PC	Removal
1	11988	US 95	UPRR BITTER CR RD & FIGHTING CR BRIDGES	2010	BRIDGE PRESERVATION	660	CE/CN	* Removal
1	11989	US 95	RR OPASS, MOYIE RV & WESTMOND BRIDGES	2010	BRIDGE PRESERVATION	360	CE/CN	* Delay
1	11990	SH 53	UPRR BRIDGE, NEAR JCT with US 95	2010	BRIDGE PRESERVATION	660	CE/CN	* Delay
4	12063	US 93	JCT I 84 IC #173 RAMP TO 500 S RD, Jerome Co	2010	RESTORATION	5,028	CE/CN	Delay
4	12064	I 84	IC #173 TO MTCE CROSSOVER, JEROME CO	2010	PAVEMENT PRESERVATION	1,050	CE/CN	Delay
4	12071	I 84	FY10 D4 INTERSTATE BR DECKS	2010	BRIDGE PRESERVATION	525	CE/CN	* Delay
5	08265	US 91	AGENCY RD PARTNERSHIP, BINGHAM CO	2010	SAFETY	122	CE/CN	* Delay
5	09884	I 15	CORRIDOR PLAN	2007	SYSTEMS PLANNING	0	CN	* Removal
5	09893	STATE	FY08 D5 DISTWIDE PLAN	2008	SYSTEMS PLANNING	0	CN	* Removal
5	10585	STATE	FY10 D5 PLANNING SUPPORT	2010	SYSTEMS PLANNING	80	PE/PC	* Removal
5	11133	STATE	FY10 D5 SIGN UPGRADES	2010	SAFETY	68	CE/CN	Delay
5	11649	US 91	UT ST LN TO PRESTON	2010	PAVEMENT PRESERVATION	680	CN	* Removal
9	09017	STATE	FY07 STATEWIDE BRIDGE SAFETY	2007	SAFETY	0	CN	Removal
9	09947	STATE	FY08 NAT'L FISHERIES ENV SVCS	2008	SYSTEMS SUPPORT	0	CN	Removal
9	09950	STATE	FY07 FISH & WILDLIFE ENV SVCS	2007	SYSTEMS SUPPORT	0	CN	* Removal
9	09951	STATE	FY08 FISH & WILDLIFE ENV SVCS	2008	SYSTEMS SUPPORT	0	CN	* Removal
9	10640	STATE	FY10 ITS REGIONAL OPERATIONS CENTER	2010	SAFETY	204	PE/PC	Delay
Sum of Estimated SHS Delays/Removals						9,526		
Local								
1	08772	STC-5907	DEEP CR BR #4, BOUNDARY CO	2010	BRIDGE - LOCAL	1,000	CN	* Delay
1	09433	OFFSYS	SAND CR PEDESTRIAN BOARDWALK, SANDPOINT	2010	STP - ENHANCEMENT	438	CN	* Delay
1	10508	STC-5741	GREENSFERRY RD, S OF HAYDEN AVE, KOOTENAI CO	2010	SAFETY - RAIL	340	CE/CN	* Delay
2	09520	OFFSYS	JORDAN CR BR; FLINT CR RD, OWHYEE CO	2010	BRIDGE - OFF SYSTEM	840	CN	* Delay
2	09987	OFFSYS	REYNOLDS CR BR, OWYHEE CO	2010	BRIDGE - OFF SYSTEM	840	CE/CN	* Delay
2	10484	SH 14	S FK CLEARWATER RV SEDIMENT REDUCTION	2010	STP - ENHANCEMENT	206	CE/CN	Delay
2	12221	SMA-7014	INT SNAKE RV AVE/SOUTHWAY AVE, DRAINAGE FIELD	2010	STP - LOCAL URBAN	445	CE/CN	Delay
5	05979	OFFSYS	AGENCY RD, FORT HALL INDIAN RESERVATION	2010	SAFETY - RAIL	290	CE/CN	* Delay
5	10493	I 15	CLARK ST IC #67 LANDSCAPING, POCATELLO	2010	STP - ENHANCEMENT	317	CE/CN	* Delay
5	10495	OFFSYS	NORTH-SOUTH PATHWAY, DRIGGS	2010	STP - ENHANCEMENT	323	CE/CN	* Delay
6	09245	OFFSYS	PLEASANT VALLEY CR BR, CLARK CO	2010	BRIDGE - OFF SYSTEM	940	CN	* Delay
6	10978	LOCAL	FY07 AMMON SCHOOLS; SR2S	2010	SAFETY - SR2S	88	CN	* Removal
Sum of Estimated LHS Delays/Removals						6,067		
Sum of Estimated SHS/LHS Delays/Removals						15,593		
Notes:								
* Sponsor/District Requested Removal/Delay								
Function Key: CN=Construction, CC=Consultant Engineering, CE=Const. Engineering, UT=Utilities, PE=Prel. Engineering, PC=Consultant Design, RW=Right of Way								

WHO	KEY NO	ROUTE	LOCATION	PROGRAM YEAR	PROGRAM	FY 2010 (\$000)			INCREASE / (DECREASE) SHS W/FICR	PHASE
						SCHEDULED	OBLIGATED	ESTIMATE		
Additional FY 2010 Cost Increases										
State										
3	12032	SH 55	CASCADE NCL TO DONNELLY	2010	PAVEMENT PRESERVATION	2,300	0	3,156	964	CE/CN
4	06521	I 86	SALT LAKE IC TO RAFT RIVER IC, EBL	2010	RESTORATION	15,916	0	16,422	570	CE/CN
5	10575	I 15	UT ST LN TO DEEP CR IC, ONEIDA CO	2010	PAVEMENT PRESERVATION	1,352	0	1,722	417	CE/CN
5	11635	I 15 B	JCT I 15 TO 5TH AVE & OAK ST, POCATELLO	2010	PAVEMENT PRESERVATION	120	0	1,497	1,551	CE/CN
5	11636	I 15 B	JCT I 15 TO 4TH AVE & OAK ST, POCATELLO	2010	PAVEMENT PRESERVATION	130	0	1,038	1,023	CE/CN
5	11637	I 15 B	YELLOWSTONE AVE; OAK TO CEDAR ST, POCATELLO	2010	PAVEMENT PRESERVATION	207	0	498	328	CE/CN
5	11638	I 15 B	YELLOWSTONE AVE TO POCATELLO CR IC	2010	PAVEMENT PRESERVATION	80	0	492	464	CE/CN
5	11640	US 30	PORTNEUF RV TO YELLOWSTONE AVE, POCATELLO	2010	PAVEMENT PRESERVATION	280	0	1,307	1,157	CE/CN
						Sum of Requested SHS Cost Increases			6,475	
Local										
COMPASS	08821	LOCAL	THREE CITIES RV CROSSING ENV STUDY, ADA CO	2002	STP - LOCAL URBAN	0	0	50	50	PC
COMPASS	11582	SMA-9463	FIVE MILE RD; FRANKLIN TO FAIRVIEW AVE, BOISE	2014	STP - TMA	1,514	421	1,818	304	LP/PC
COMPASS	12062	STP-7403	FRANKLIN RD; TOUCHMARK WAY TO FIVE MILE RD	2012	STP - LOCAL URBAN	25	25	85	60	PC
LHTAC (D1)	09462	STC-5723	BURMA RD; GOTHAM BAY RD TO JCT SH 97, KOOTENA	2011	STP - LOCAL RURAL	0	0	175	175	PC
LHTAC (D1)	11994	OFFSYS	S FK CDA RV RD BR, E OF MULLAN	PREL	BRIDGE - OFF SYSTEM	0	0	60	60	PC
LHTAC (D5)	11918	STP-7181	GOULD ST BR, POCATELLO	2010	STIMULUS - STP - LOCAL URBAN	0	0	75	75	CN
District 2	05419	SMA-7124	E MAIN; JCT US 12 TO LINDSAY CR RD, LEWISTON	1997	STP - LOCAL URBAN	0	0	447	447	PE/CE/CN
District 9	10496	OFFSYS	HISTORICAL TRANSPORTATION IMAGE CATALOG	2010	STP - ENHANCEMENT	145	145	395	250	CN
District 9	10659	LOCAL	FY10 SAFE ROUTES TO SCHOOL	2010	SAFETY - SR2S	121	121	259	138	PD
						Sum of Requested LHS Cost Increases			1,559	
Total Requested Cost Increases									8,034	

						FY 2010 (\$000)			INCREASE / (DECREASE) SHS W/FICR	PHASE
WHO	KEY NO	ROUTE	LOCATION	PROGRAM YEAR	PROGRAM	SCHEDULED	OBLIGATED	ESTIMATE		
Projects for End of Year Funding Balance & August Redistribution of Obligation Authority										
NEW/ADVANCE ROADWAY PROJECTS (RESTORATION BEFORE EXPANSION)										
1	09776	US 95	BLACKWELL SLOUGH BR, KOOTENAI CO	2011	BRIDGE PRESERVATION	0	0	485	546	CE/CN
2	12001	SH 8	WHITE PL TO S FK PALOUSE RV BR, MOSCOW	2011	PAVEMENT PRESERVATION	0	0	4,650	5,239	PC/CE/CN
2	11032	STATE	FY12 D2 DISTWIDE BRIDGE REHAB	2012	BRIDGE PRESERVATION	0	0	460	518	CE/CN
1	11553	I 90	PINE CR WB & EB O'PASS, SHOSHONE CO	2013	BRIDGE PRESERVATION	0	0	1,031	1,162	PE/CE/CN
2	12007	US 12	POST OFFICE CR BR TO WARM SPRINGS PACK BR	2013	PAVEMENT PRESERVATION	0	0	3,000	3,380	PE/CE/CN
4	12069	I 84	KASOTA EAST TO MP 207.7	2013	PAVEMENT PRESERVATION	0	0	3,500	3,943	CE/CN
6	12283	I 15	ROBERTS TO SAGE JCT, NB & SB	NEW	PAVEMENT PRESERVATION (STIM II)	0	0	6,000	6,760	PE/CE/CN
COMPASS	12210	LOCAL	COMMUTERIDE VANS, ACHD	NEW	STP - TMA (STIM II)	0	0	446	446	CN
COMPASS	12255	LOCAL	USTICK RD TRAFFIC SIGNAL UPGRADE	NEW	STP - TMA (STIM II)	0	0	236	236	CE/CN
1	12212	US 95	WORLEY NORTH, KOOTENAI CO, STG 2	NEW	RESTORATION (STIM II)	0	0	9,145	10,304	UT/CE/CN
LHTAC (D1)	12243	STC-5746	SUNNYSIDE RD; CDA LAKE DR TO BORLEY RD	NEW	STP - LOCAL RURAL (STIM II)	0	0	871	871	PE/PC/CE/CN
LHTAC (D3)	12229	SMA-7169	KUNA RD OVERLAYS	NEW	STP - LOCAL RURAL (STIM II)	0	0	675	675	PC/CE/CN
LHTAC (D6)	12246	STC-6862	A2 HIGHWAY OVERLAY, CLARK CO	NEW	STP - LOCAL RURAL (STIM II)	0	0	569	569	PC/CE/CN
5	09225	US 91	SHELLEY NCL TO YORK RD	NEAR	EXPANSION	0	0	2,000	2,253	RW
LHTAC (D1)	12018	LOCAL	MOSCOW TRANSPORTATION PLAN	2011	STP - LOCAL URBAN	0	0	285	285	CN
Anticipated Advance Requests									37,188	
LHTAC (D1)	12232	STC-5722	CONKLING RD; LARSON TO BENEWAH CO LN	NEW	STP - LOCAL RURAL (STIM II)	0	0	1,971	1,971	PE/PC/CE/CN
4	12089	I 84	JCT SH 50 to BURLEY	2011	PAVEMENT PRESERVATION	0	0	7,700	8,676	CE/CN
6	08132	US 20	MENAN-LORENZO IC, JEFFERSON CO	2010	EXPANSION (RW Litigation)	0	0	1,800	2,028	Agreement
1	01509	US 95	SANDPOINT TO KOOTENAI CUTOFF	NEAR	HORIZONS	0	0	13,610	15,334	CN
1	01729	US 95	SANDPOINT, NORTH & SOUTH	2011	EXPANSION, AC CONVERSION	0	0	18,005	20,286	CN
Anticipated Redistribution Requests									48,295	
Notes:										
Phase Key: CN=Construction, CC=Consultant Engineering, CE=Const Engineering, UT=Utilities, PE=Prel. Engineering, PC=Consultant Design, RW=Right of Way										

In accordance with 67-3503, Idaho Code, I certify the attached forms properly state the receipts and expenditures of the department (agency, office, or institution) for the fiscal years indicated. The summary of expenditures by major program, fund source, and standard class is indicated below.

			Proposed FY12 Request for Board Review: 8-19-10		
	FY 2010 Total Appropriation	FY 2010 Actual Expenditures	FY2011 Original Appropriation	FY 2011 Estimated Expenditures*	FY 2012 Total Request
By Major Programs					
290 01 Administration	23,234,500	22,959,940	22,675,900	22,675,900	23,764,700
290 02 Planning	5,492,900	5,307,641	4,962,700	4,962,700	4,581,200
290 03 Motor Vehicles	25,141,900	21,890,358	28,182,600	28,182,600	27,903,500
290 04 Highway Operations	163,182,910	154,079,449	150,187,000	155,153,539	158,766,700
290 05 Capital Facilities	2,850,000	2,912,931	2,850,000	2,850,000	2,850,000
290 06 Contract Construction & Right-of-Way Acquisition	640,002,243	325,241,329	261,634,300	581,483,048	295,667,700
290 07 Aeronautics	4,582,932	2,657,570	2,818,100	3,458,560	2,888,700
290 08 Public Transportation	19,000,600	12,113,345	10,346,600	16,724,351	10,394,200
	-	-	-	-	-
TOTAL	883,487,985	547,162,563	483,657,200	815,490,698	526,816,700
By Fund Source	Total Appropriation	Actual Expenditures	Original Appropriation	Estimated Expenditures	Total Request
0260-02 d State Highway	277,902,700	219,089,266	218,048,000	295,165,687	258,323,700
0260-03 f State Highway	384,316,600	248,143,603	256,094,300	371,292,888	259,967,000
0260-04 i State Highway	600,500	403,604	599,400	599,400	411,000
0260-05 o State Highway	8,252,300	5,059,926	6,047,400	8,901,266	5,176,300
0260-46 f Stimulus Funds - Title XII ARRA	190,311,853	70,768,296	-	119,543,557	-
0346-00 f Stimulus Funds - Title XIV ARRA	17,471,100	991,760	-	16,479,340	-
0221-02 d Aeronautics	3,670,632	2,066,890	2,120,100	2,760,560	2,098,900
0221-03 f Aeronautics	760,700	244,677	547,900	547,900	614,800
0221-04 i Aeronautics	201,600	394,541	200,100	200,100	225,000
0001-00 g General Fund	-	-	-	-	-
TOTAL	883,487,985	547,162,563	483,657,200	815,490,698	526,816,700
By Object	Total Appropriation	Actual Expenditures	Original Appropriation	Estimated Expenditures	Total Request
Personnel Costs	120,487,323	108,722,462	108,057,600	112,993,415	114,154,500
Operating Expenditures	110,642,672	76,679,634	94,873,100	111,001,548	94,007,800
Capital Outlay	604,168,882	341,671,433	264,166,000	548,991,730	302,980,200
Trustee and Benefit Payments	48,189,108	20,089,034	16,560,500	42,504,005	15,674,200
Lump Sum	-	-	-	-	-
TOTAL	883,487,985	547,162,563	483,657,200	815,490,698	526,816,700
TOTAL FTP	1,833.5	1,833.5	1,826.5	1,826.5	1,827.5
FUNDED FTP	1,833.5	1,833.5	1,826.5	1,826.5	1,827.5

* FY 2011 Estimated Expenditures includes reappropriated spending authority.

OFFICIAL MINUTE

Transfer of Real Property to the State of Idaho

WHEREAS, a route from Buhl (Milepost 85.252 on Clear Lakes Road) to the I-84 Eastbound ramps (Milepost 100.00 on South 1950 East) in Wendell, as shown on the attached Exhibit "A", known as the State Highway 46 Extension, has been found to have the characteristics of a State highway; and

WHEREAS, by terms of a Cooperative Agreement dated 15 September 2010, with the city of Buhl, Buhl Highway District, West Point Highway District and the Wendell Highway District, the State agreed to accept onto the State highway system, the section of road from Buhl to Wendell cited above; and

WHEREAS, the Board Subcommittee on State Highway System Adjustments has reviewed the Cooperative Agreement and recommends Board approval of the system action.

NOW THEREFORE BE IT RESOLVED, that the route from Buhl (Milepost 85.252 on Clear Lakes Road) to Wendell (Milepost 100.00 on South 1950 East) be accepted as a part of the State highway system as State Highway 46, including all jurisdiction, control and interest of the local jurisdictions of said section including the right-of-way appurtenant thereto and are hereby vacated and conveyed to the State as its interest may appear.

IDAHO TRANSPORTATION BOARD

RECOMMEND:

TPA M. E. M. 252 W. 46

APPROVED:

CE [Signature]

APPROVED AS TO FORM:

DAG [Signature]

Date 8/25/2010

[Signature]
Chairman

[Signature]
Vice-Chairman

[Signature]
Member

[Signature]
Member

[Signature]
Member

[Signature]
Member

[Signature]
Member

Instrument # 240628

GOODING, GOODING, IDAHO
3-26-2012 08:01:13 No. of Pages: 3
Recorded for : IDAHO TRANSPORTATION DEPARTMENT
DENISE M. GILL Fee: 0.00
Ex-Officio Recorder Deputy [Signature]

STATE OF IDAHO)
) ss
COUNTY OF ADA)

On this 15th day of September, 2010 before me the undersigned, a Notary Public in and for said State, personally appeared Darrell V Manning, Gary Blick, R. James Coleman, Janice Vassar, Jerry Whitehead, Neil Miller, Lee Gagner, known to me to be the Chairman, Vice Chairman, and Members, respectively, of the Idaho Transportation Board of the State of Idaho, which Idaho Transportation Board executed the within instrument, and acknowledged to me that the said Idaho Transportation Board of the State of Idaho executed the same for the State of Idaho.

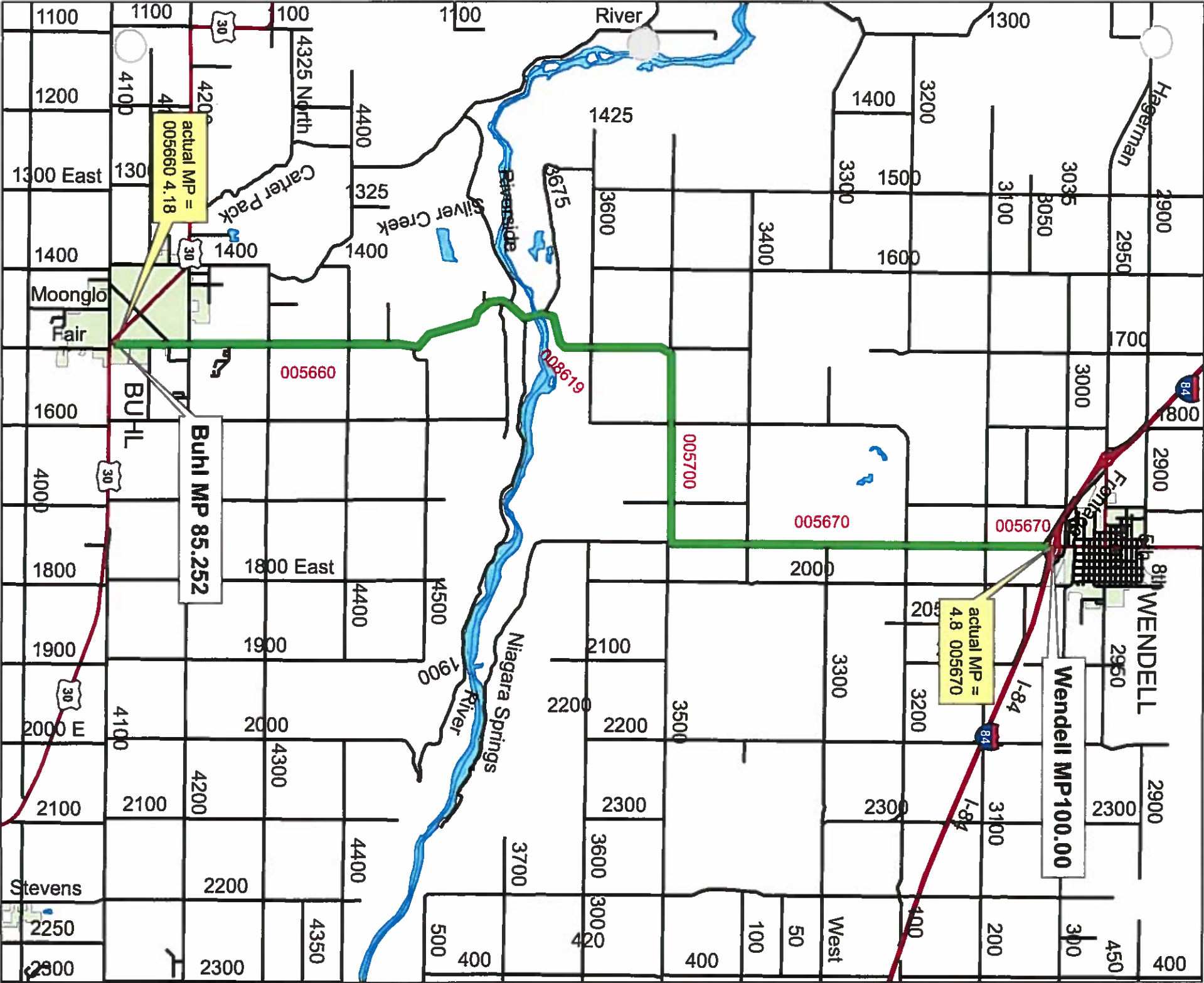
IN WITNESS, WHEREOF, I have hereunto set my hand and affixed my official seal the day and year in this certificate first above written.

Don D. Higgins
Notary Public for Idaho
Residing in Boise, Idaho

Commission Expires 8-28-2015



BUHL MP 85.252 TO WENDELL MP 100.00



STATE OF IDAHO
IDAHO TRANSPORTATION DEPARTMENT
STATE HIGHWAY FUND
CERTIFICATION OF RECEIPTS AND DISBURSEMENTS
July 1, 2009 - June 30, 2010

Cash Balance - July 1, 2009 \$24,148,000

Receipts	
Transfer From Highway Distribution Account	\$ 175,133,700
Miscellaneous Receipts	<u>\$ 39,205,900</u>
Total State Receipts	\$ 214,339,600
Federal Aid - Formula	\$ 301,266,500
Federal Aid - ARRA Title XII	\$ 67,342,500
Transfers In - Ethanol Exemption Elimination	\$ 14,766,500
Transfers In - Direct Investment Pool	\$ 9,663,700
City & County Contributions	<u>\$ 4,407,200</u>
Total Receipts	\$ 611,786,000

Disbursements	
Expenditures - Fund 0260	\$ 460,594,000
Expenditures - ARRA Title XII	\$ 70,588,400
Transfers Out - To Long Term Investment Fund	\$ 1,381,800
Transfers Out - Garvee Debt Service Fund - Fed	\$ 42,105,400
Transfers Out - Garvee Debt Service Fund - State	\$ 2,585,700
Transfers Out - Department of Commerce	<u>\$ 25,000</u>
Total Disbursements	<u>\$ 577,280,300</u>
Net Change in Cash Balance	\$ 34,505,700
Cash Balance - June 30, 2010	<u>\$ 58,653,700</u>

Prepared By:

Certified:



Gordon Wilmoth, Controller
Idaho Transportation Department



Darrell V Manning
Chairman, Idaho Transportation Board