


Click this link named [West Fork Potlatch River Bridge](#)

Use the information below to login to ProjectWise

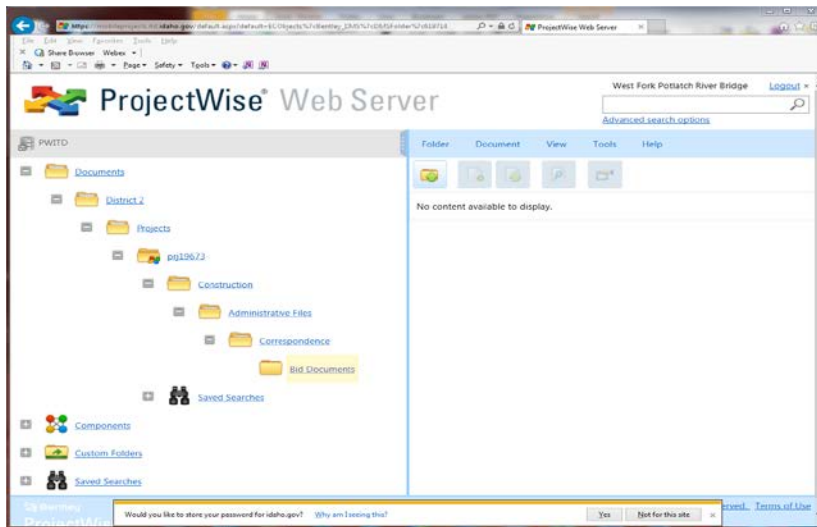
User Name: West Fork Potlatch River Bridge

Password: 19261



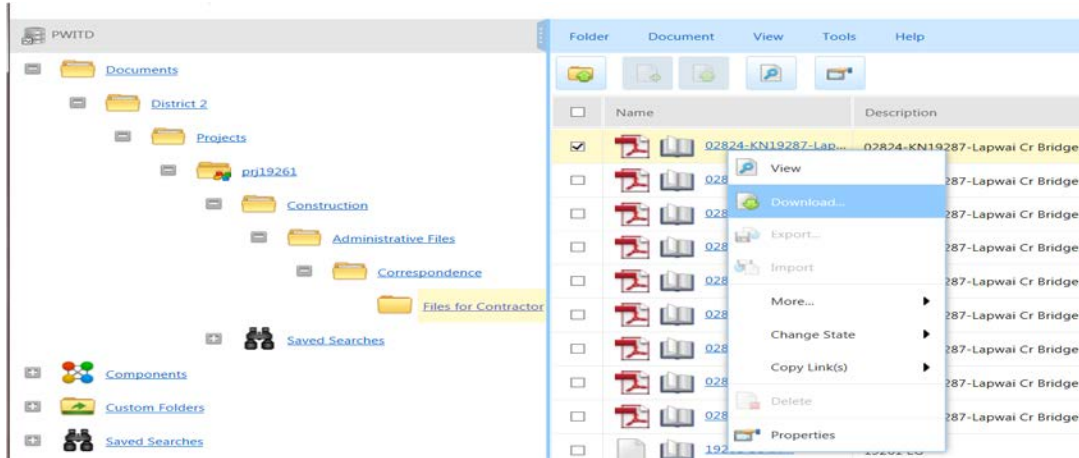
The image shows a login form for ProjectWise Web Server. At the top left is the ProjectWise logo, followed by the text "ProjectWise® Web Server". Below this is a "Location" dropdown menu with "PWITD" selected. Underneath is a "User Name" text box containing "West Fork Potlatch River Bridge". Below that is a "Password" text box with five dots representing the password. At the bottom right is a green "Log in" button.

You will be directed to this page seen below:



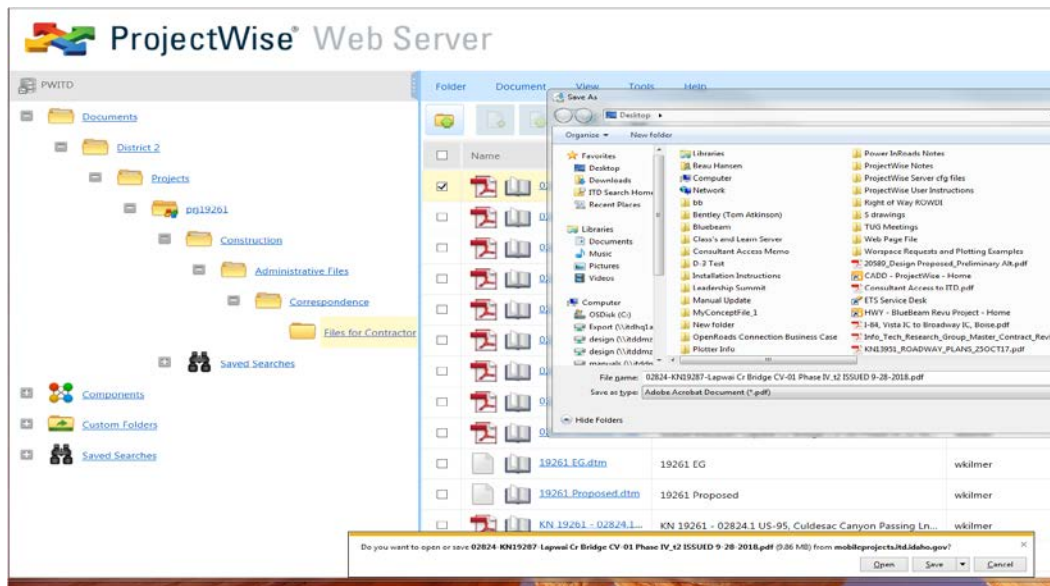
You will then need to navigate to the correct folder containing the documents with the + sign next to the folders.

You will then see the documents listed available for download. You will then **Right Click** on the documents and you will see the options listed below



Click **Download**

And this screen should appear:



Click the down Arrow next to Save and select Save As. The smaller Save As box will appear and you can then select your computers location to save the files. Only One document can be downloaded at a time. Repeat these steps for any and/or all additional bid documents  
If you have any problems with the link or any other questions please Contact:

**Beau Hansen**

*CADD/ProjectWise Administrator*

ITD HQ OTS | [beau.hansen@itd.idaho.gov](mailto:beau.hansen@itd.idaho.gov) |(W) 208-334-8494