

Freight Program

Jeff Marker

Freight Program Manager

December 14, 2017



YOUR *Safety* • • • ► YOUR *Mobility* • • • ► YOUR *Economic Opportunity*

Overview

- **Statewide Freight Strategic Plan**
 - Findings
 - Projects
- **129,000 Pound Trucking**
 - Status



Background



- **Started: July 2015 – MAP 21**
- **Lead Contractor: Cambridge Systematics**
- **Format:**
 - Multimodal
 - Infrastructure, Economic Impact, Policies, Safety
- **Inputs:**
 - Freight Advisory Committee
 - Freight Summit
 - MPOs
 - Districts
 - Advisory Team



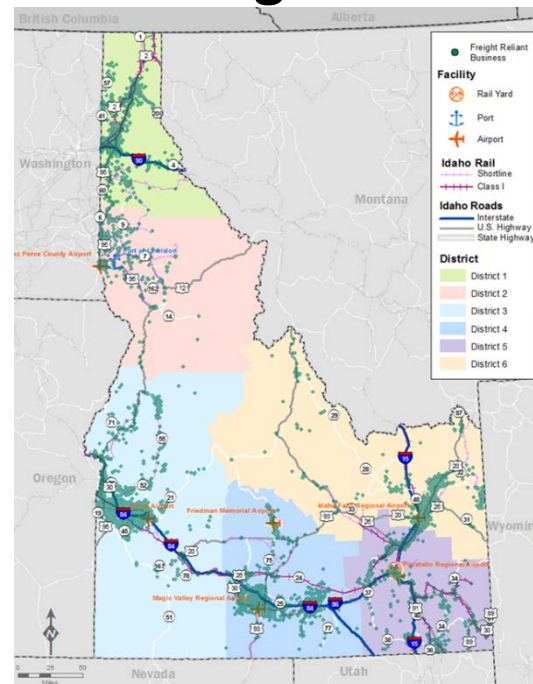
Background

- **FAST Act – December 2015**
 - Provides Freight Formula Funds (2016-2020)
 - Requires Freight Plan
 - Encourages Freight Advisory Committee
 - Critical Rural and Urban Freight Corridors
 - Required Budget Constrained Project List
 - FHWA Guidance – October 2016



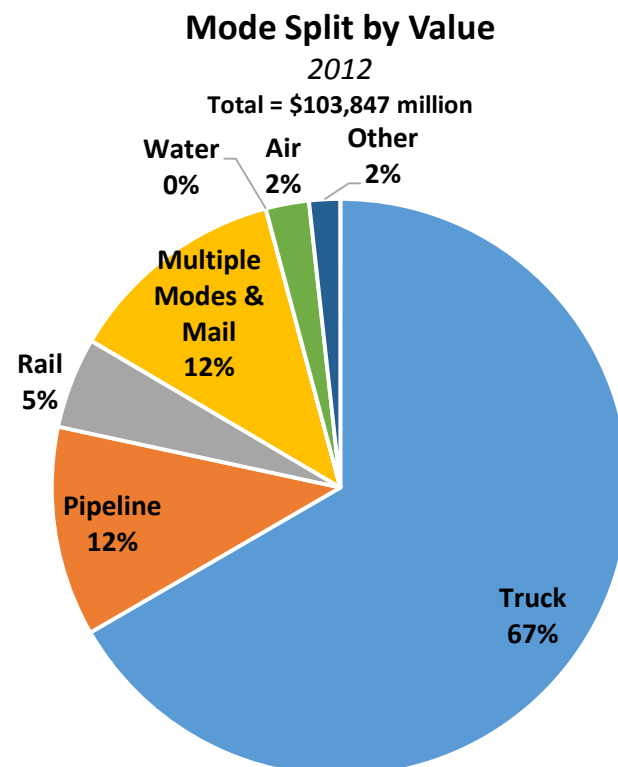
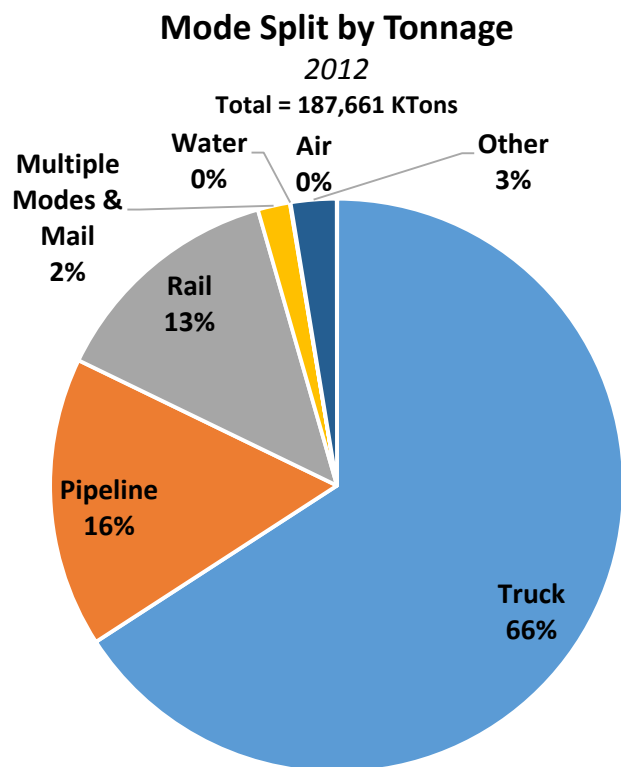
Statewide Freight Strategic Plan

- **Eight “Freight Reliant” Industries in Idaho**
 - Agriculture, Forestry, Fishing and Hunting, Mining, Utilities, Construction, Manufacturing, Wholesale Trade, Retail Trade, and Transportation and Warehousing.
 - Account for:
 - 33.2% of the firms
 - 35.8% of employees
 - 70.1% of sales revenue
 - 44% of 2014 GDP



Statewide Freight Strategic Plan

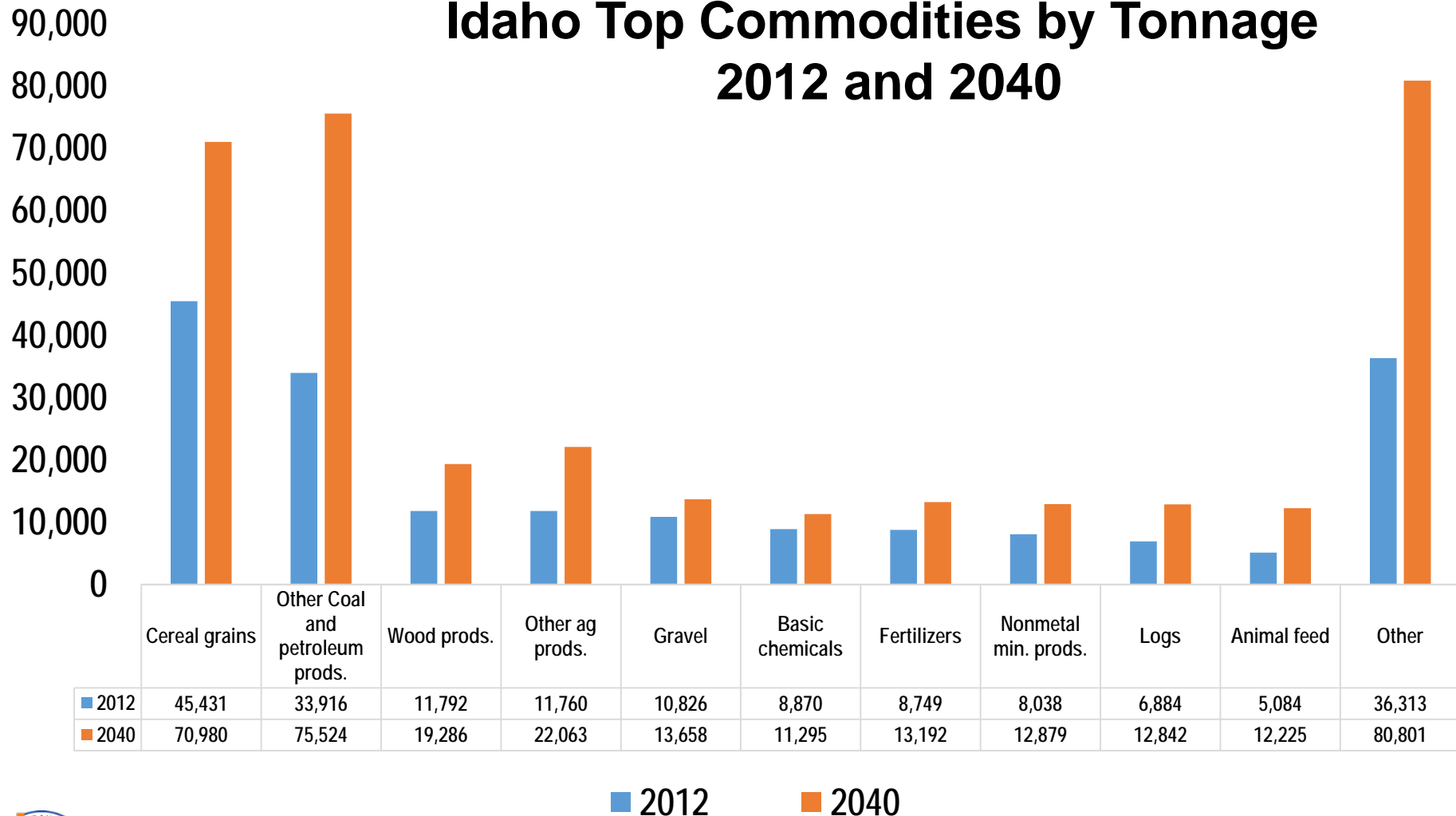
- Idaho Mode Split by Tonnage and Value, 2012



Statewide Freight Strategic Plan

Weight (KTons)

Idaho Top Commodities by Tonnage 2012 and 2040



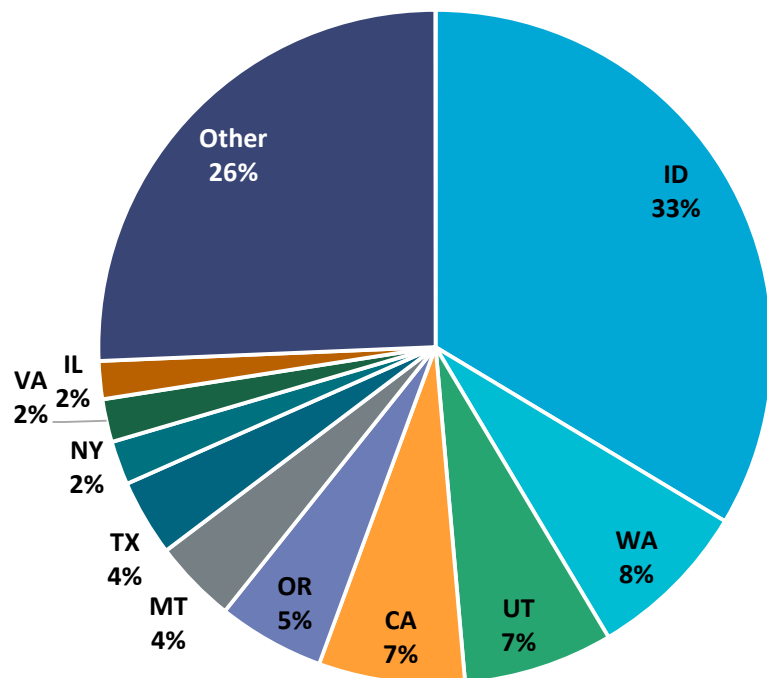
Statewide Freight Strategic Plan

Idaho Domestic Trade Partner by Value

Top Domestic Trading Partners by Value

2012

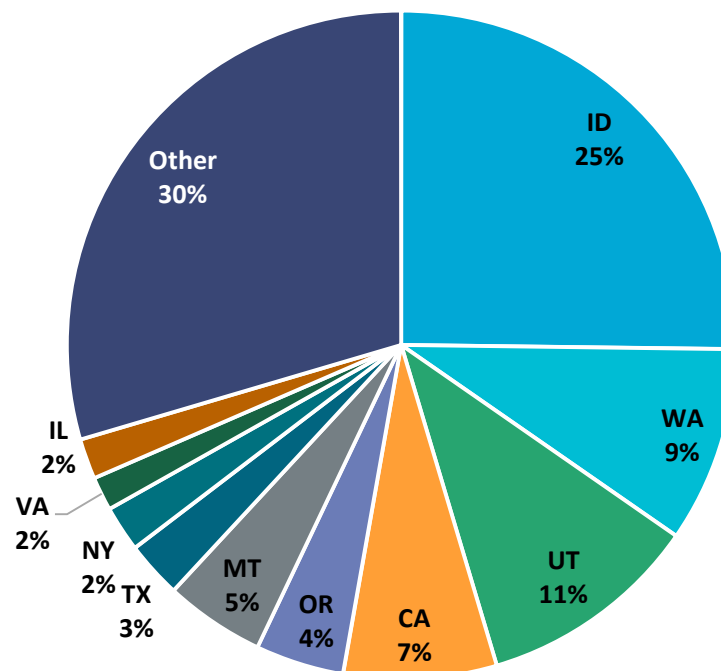
Total = \$93,117 million



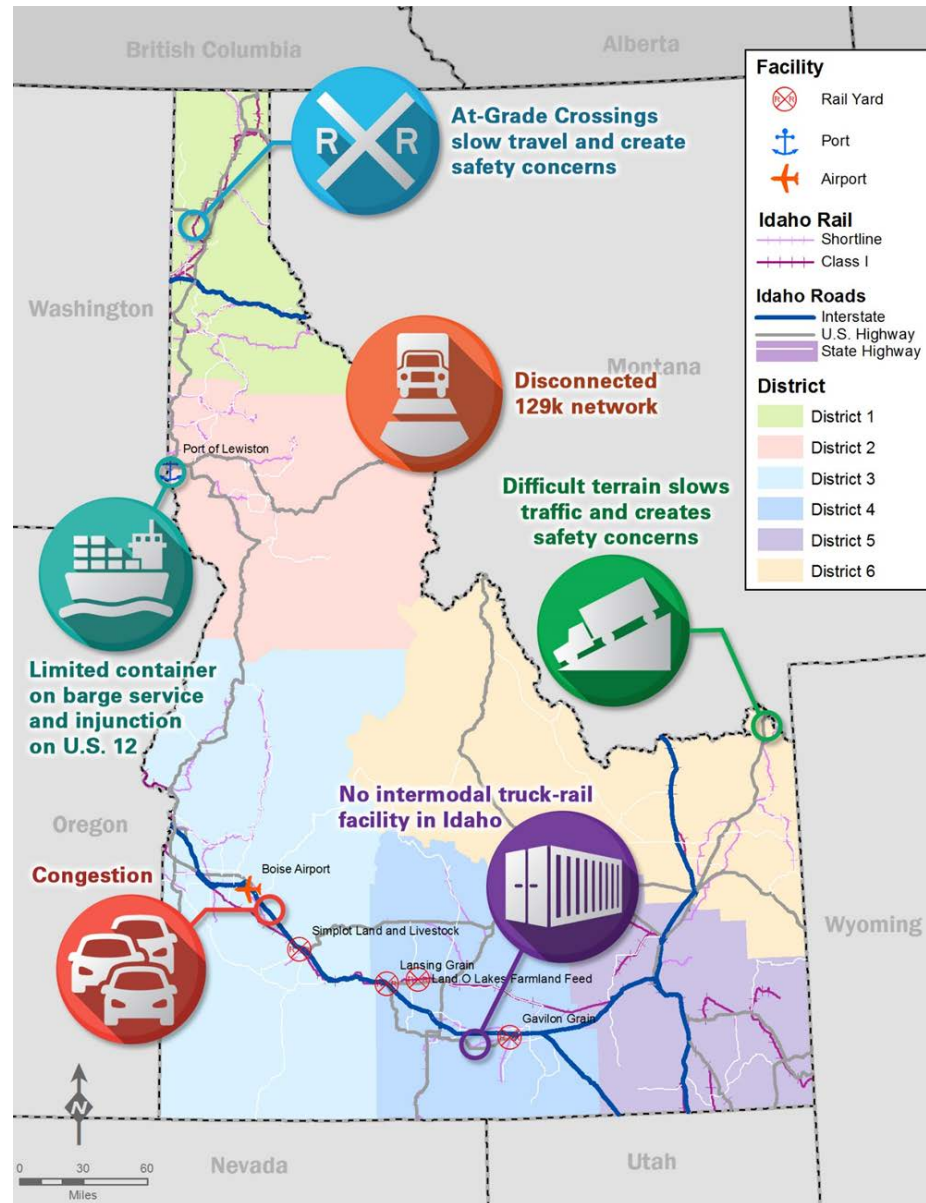
Top Domestic Trading Partners by Value

2040

Total = \$191,228 million



Statewide Freight Strategic Plan



Statewide Freight Strategic Plan

- **Budget Constrained Project List:**
 - **FY16:**
 - Lewiston POE License Plate Readers (POE, D2)
 - I 15, IC # 108 to Bonneville County – Resurface (D5)
 - **FY17:**
 - Motor Vehicle Services Permitting Software (HQ)
 - East Boise POE License Plate Readers (POE, D3)
 - I-84, Five Mile Road to Orchard Road & Ramps – Resurface (D3)
 - Traffic Monitoring, Weigh-In-Motion MTC (HQ)
 - I-84, Declo POE (D4)



Statewide Freight Strategic Plan

- **Budget Constrained Project List:**
 - **FY18:**
 - Interstate 15 and SH 33 - Sage Junction POE (POE, D6)
 - I-84, Declo POE (D4)
 - US 95 from I-90 to SH 53 (D1)
 - **FY19:**
 - Idahome Road (D4, Raft River)
 - SH 128 and Wall St. Anticipated growth of Harry Wall Industrial Park (D2, Port of Lewiston)



Statewide Freight Strategic Plan

- **Budget Constrained Project List:**
 - **FY20:**
 - I-84, Declo POE (D4)
 - **FY21:**
 - I-84, Hammett Hill Passing Lane (D3)

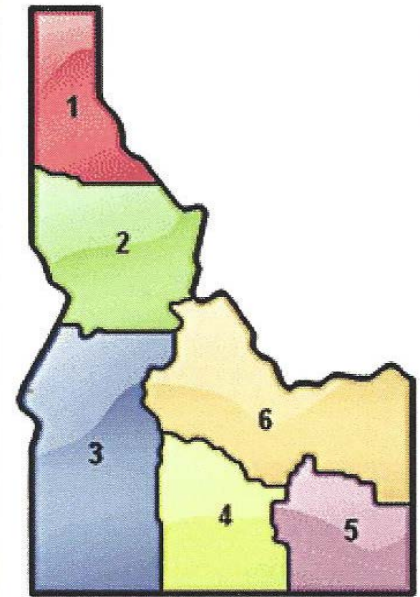


129,000 Pound Trucking

- **Requests:**

- **41 Requests:**

- District 1 – 7 Approved
- District 2 – 1 Approved, 4 Pending Further Review
- District 3 – 5 Under Evaluation
- District 4 – 1 Awaiting Public Hearing, 1 Under Evaluation
- District 5 – 13 Approved
- District 6 – 7 In Public Comment, 2 Under Evaluation



District 5 Routes

201616US26D5

201617SH34

201640US91

201630I86BL

201706US30

201703SH37

201702US89

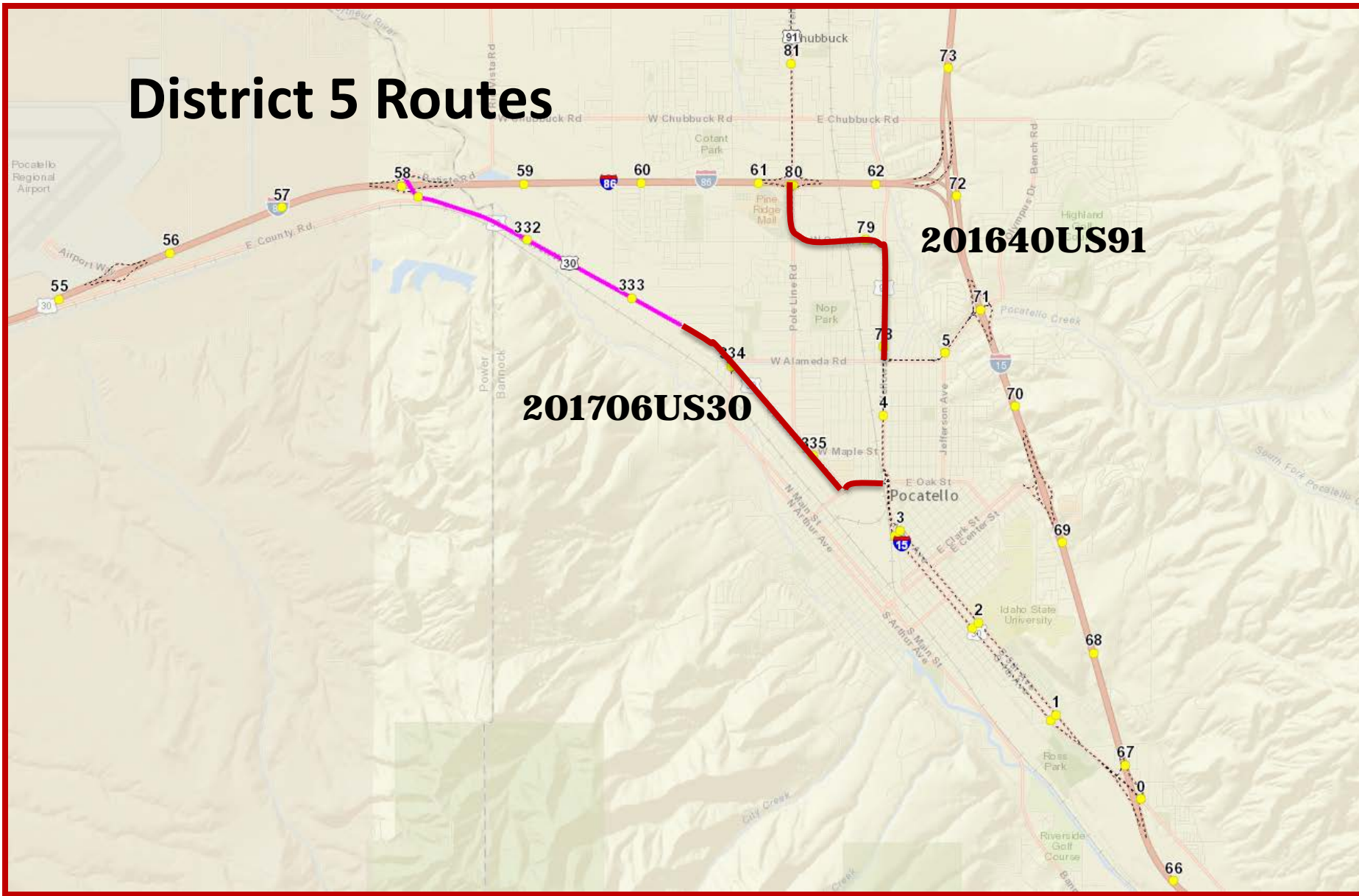
201701SH38

201638US91



YOUR Safety • • • ► **YOUR Mobility** • • • ► **YOUR Economic Opportunity**

District 5 Routes



201640US91

201706US30



District 5 Routes

201618US89

201702US89

201619SH61

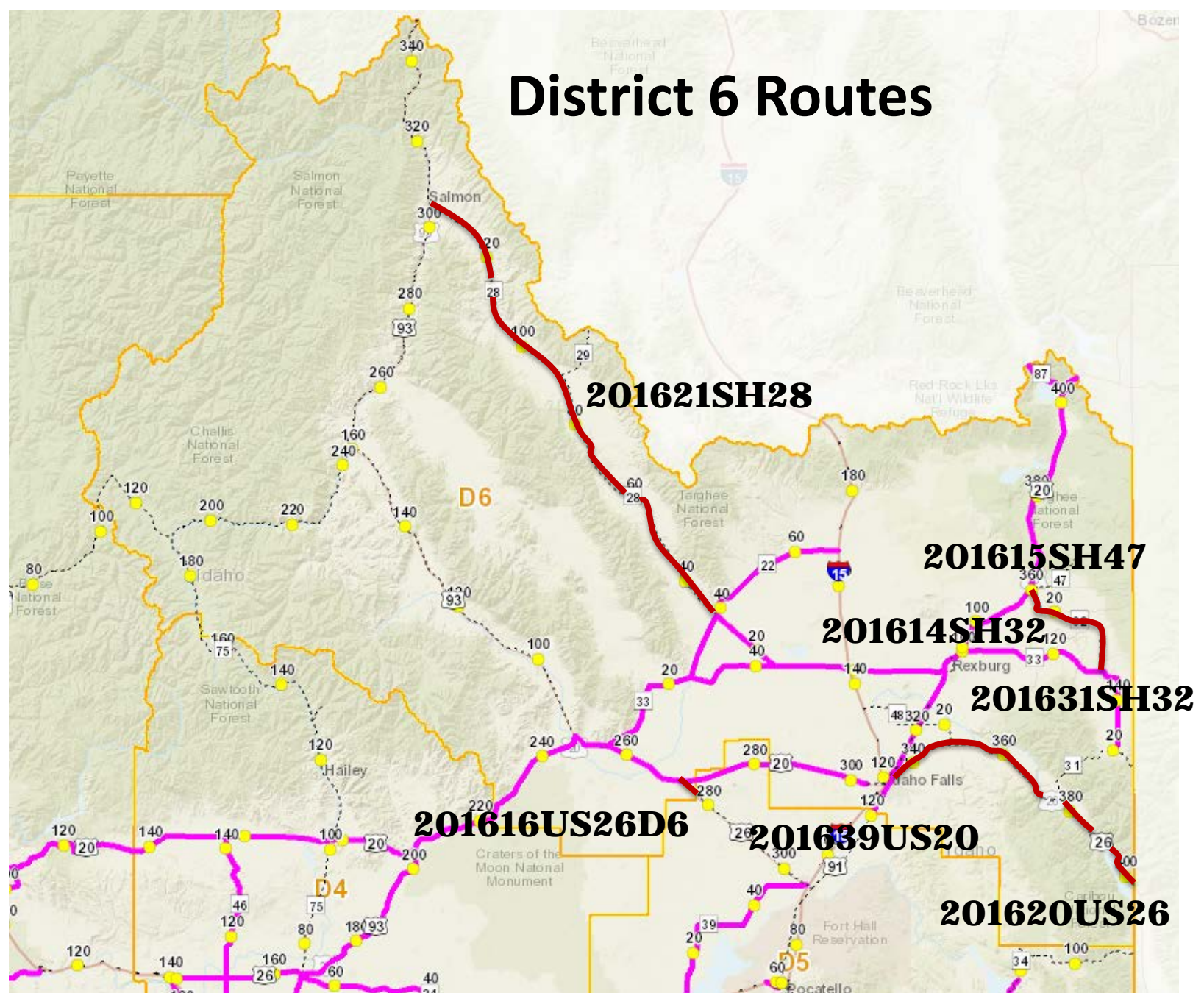


District 5 Routes

201630I86BL

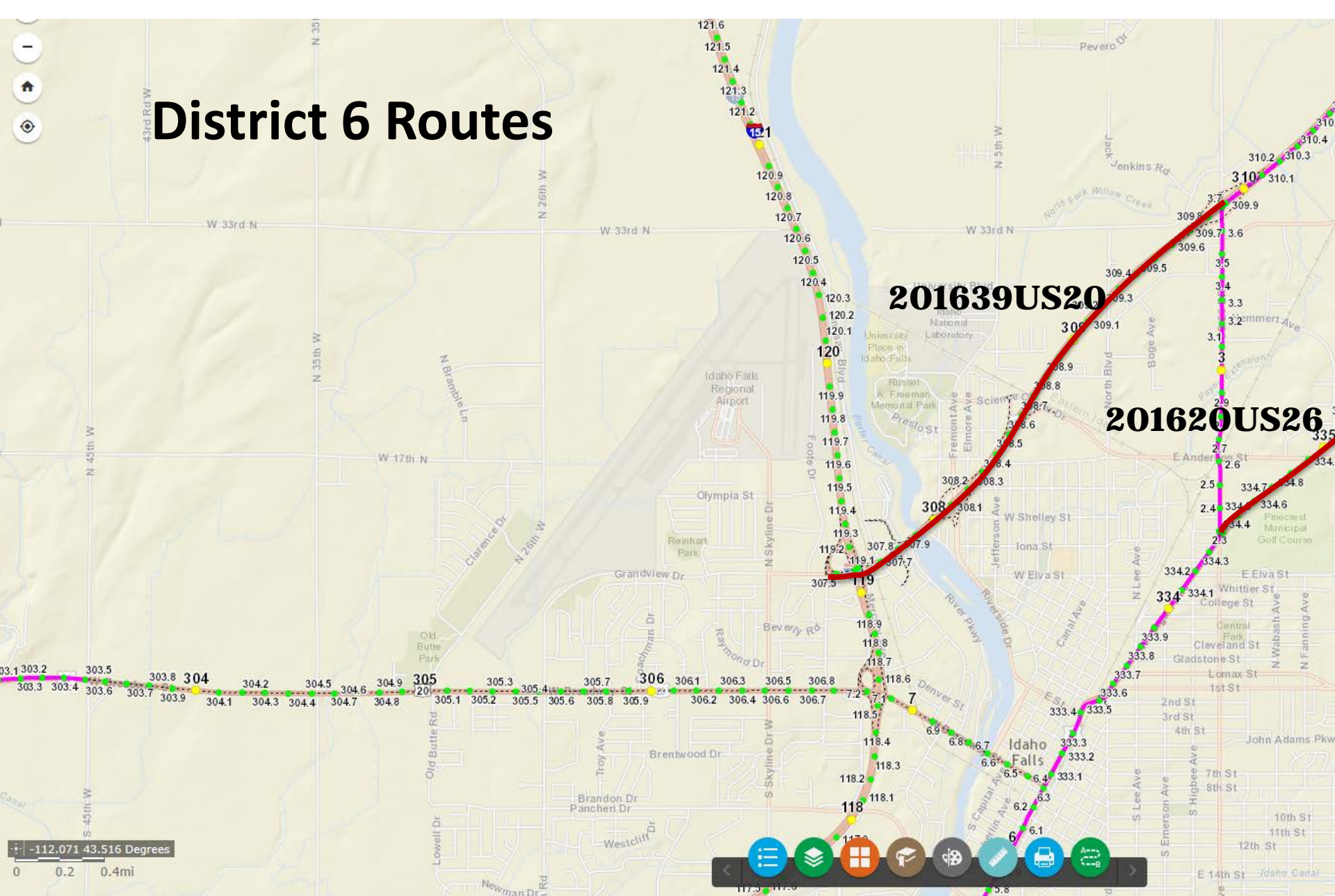


District 6 Routes



YOUR Safety • • • ► **YOUR Mobility** • • • ► **YOUR Economic Opportunity**

District 6 Routes

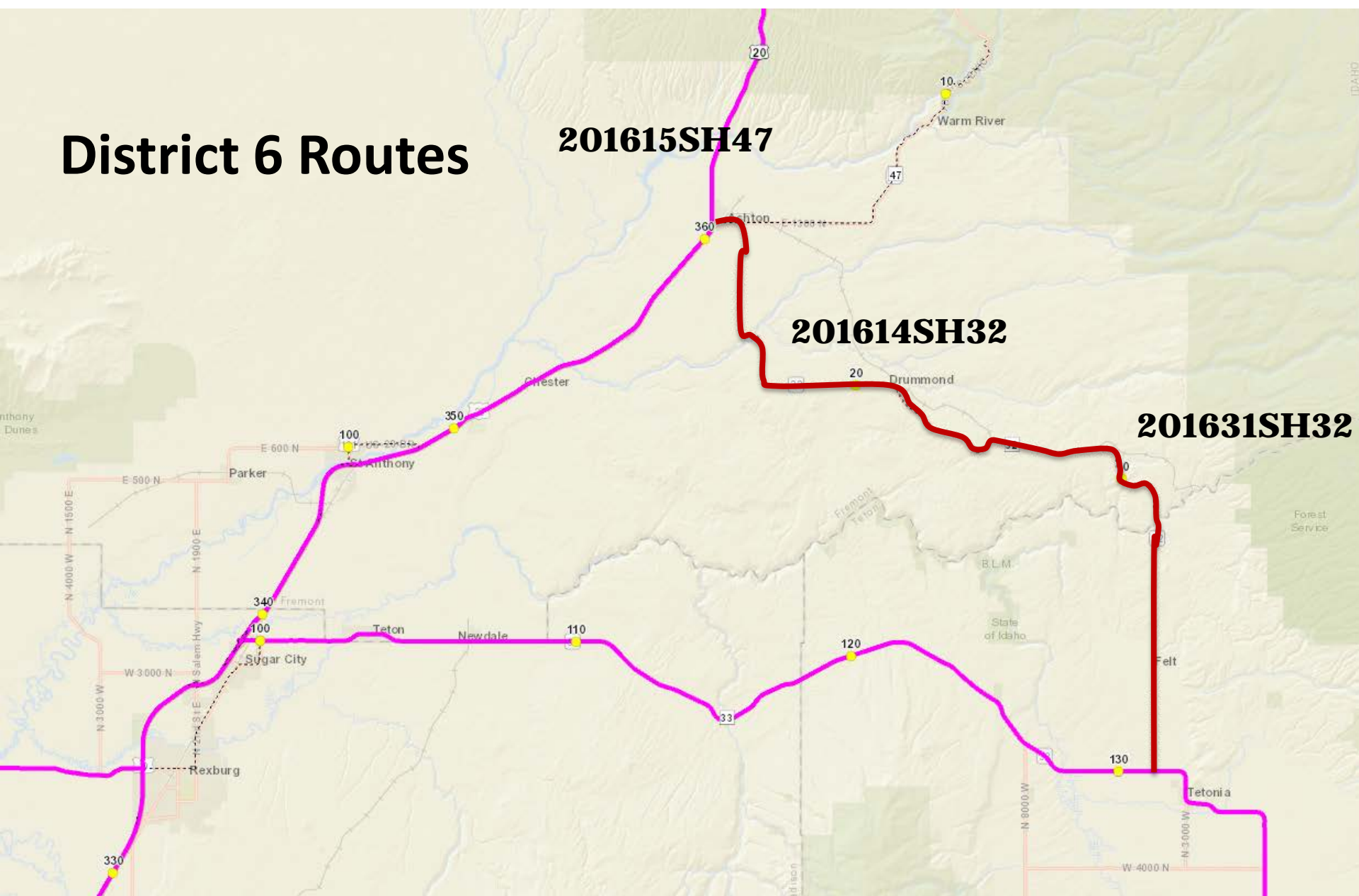


District 6 Routes

201615SH47

201614SH32

201631SH32



Freight Program

Jeff Marker

Freight Program Manager

jeffrey.marker@itd.idaho.gov

(208) 334-8462

