

Trucking Advisory Council Freight Update

Jeff Marker

April 11, 2018



YOUR *Safety* • • • ► YOUR *Mobility* • • • ► YOUR *Economic Opportunity*

Idaho Truck Parking

Jeff Marker

ITD Freight Program Manager



YOUR *Safety* • • • ► YOUR *Mobility* • • • ► YOUR *Economic Opportunity*



Truck Parking Exercise

- Table Discussion – Working Lunch
- Identify 3-5 locations where truck parking needs added or expanded
 - Considerations:
 - Hours of Service
 - Distribution Centers
 - Truck-to-Rail Transload Facilities
- Table Outbrief





Truck Parking Exercise



YOUR *Safety* ● ● ● ► YOUR *Mobility* ● ● ● ► YOUR *Economic Opportunity*



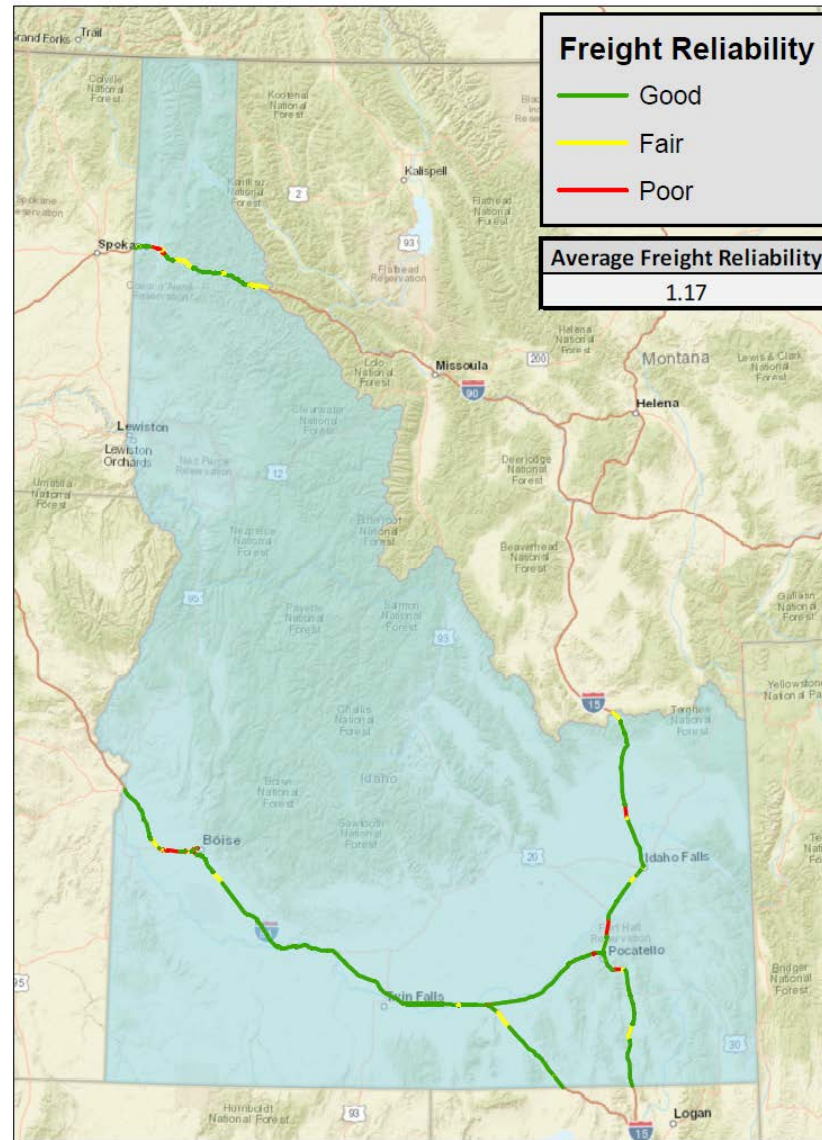
Freight Performance Measures

ITD Research Analyst



YOUR *Safety* • • • ► YOUR *Mobility* • • • ► YOUR *Economic Opportunity*

CURRENT CONDITION



Your Safety • Your Mobility • Your Economic Opportunity

129,000 Pound Trucking

Jeff Marker

ITD Freight Program Manager

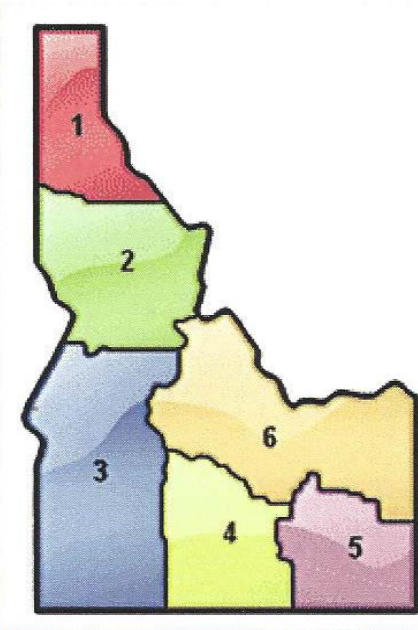


YOUR *Safety* • • • ► YOUR *Mobility* • • • ► YOUR *Economic Opportunity*







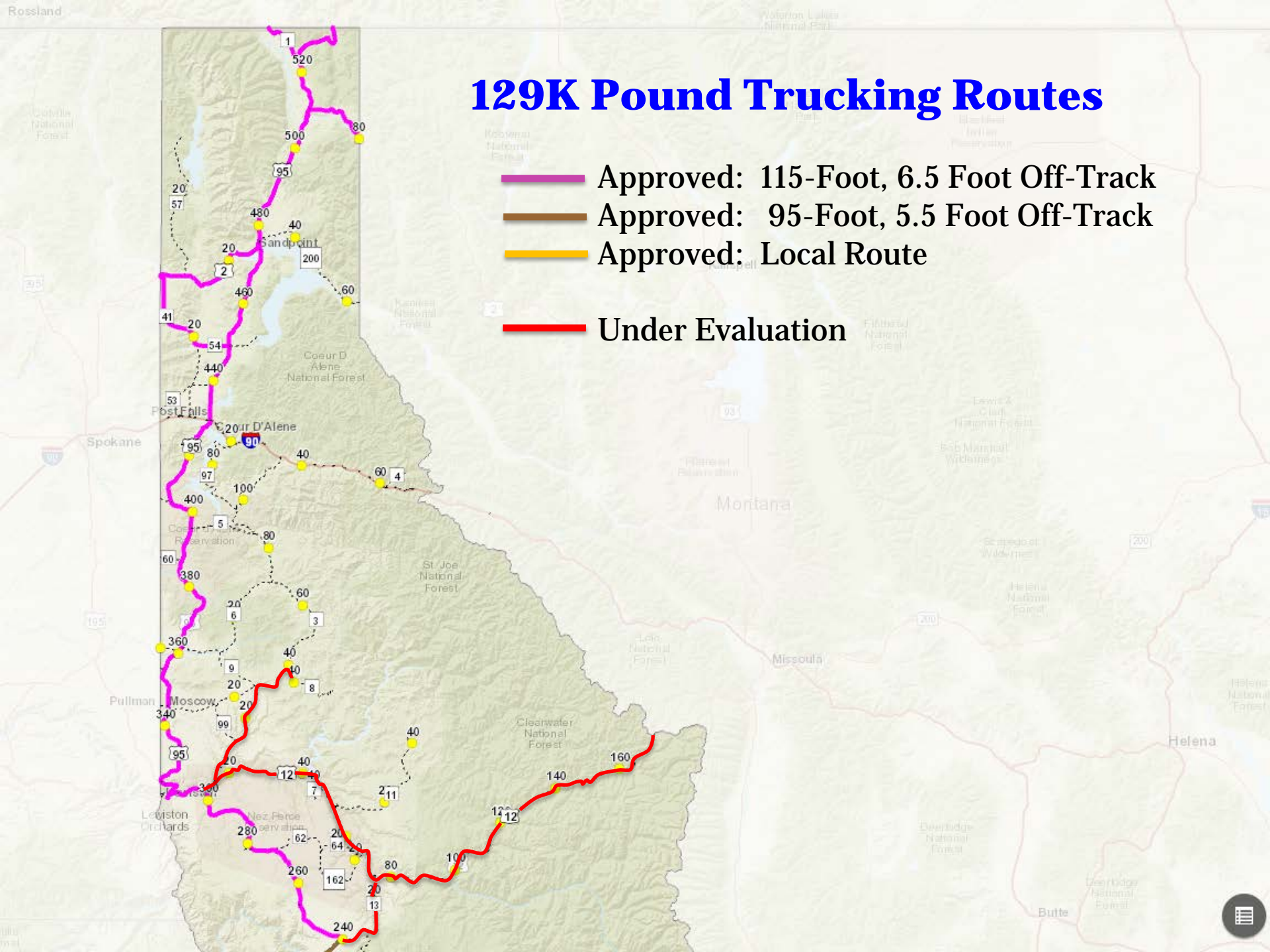
129,000 Pound Trucking

- Requests:
 - 42 Requests:
 - District 1 - 7 Approved
 - District 2 – 1 Approved, 4 Pending Further Review
 - District 3 – 5 Under Evaluation
 - District 4 – 2 Under Evaluation
 - District 5 – 11 Approved (3 previously approved)
 - District 6 - 7 Approved, 2 New Applications



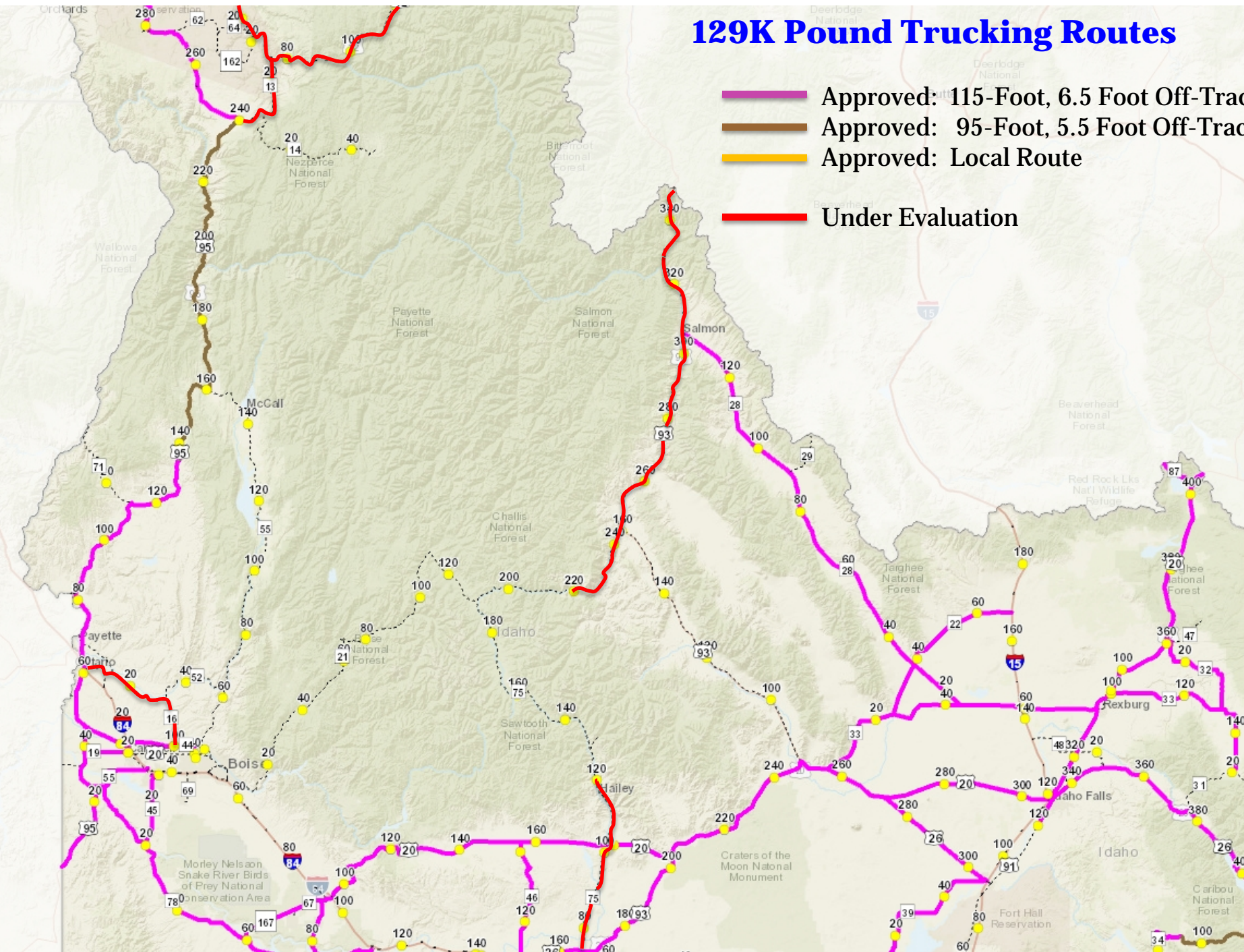
129K Pound Trucking Routes

-  Approved: 115-Foot, 6.5 Foot Off-Track
-  Approved: 95-Foot, 5.5 Foot Off-Track
-  Approved: Local Route
-  Under Evaluation



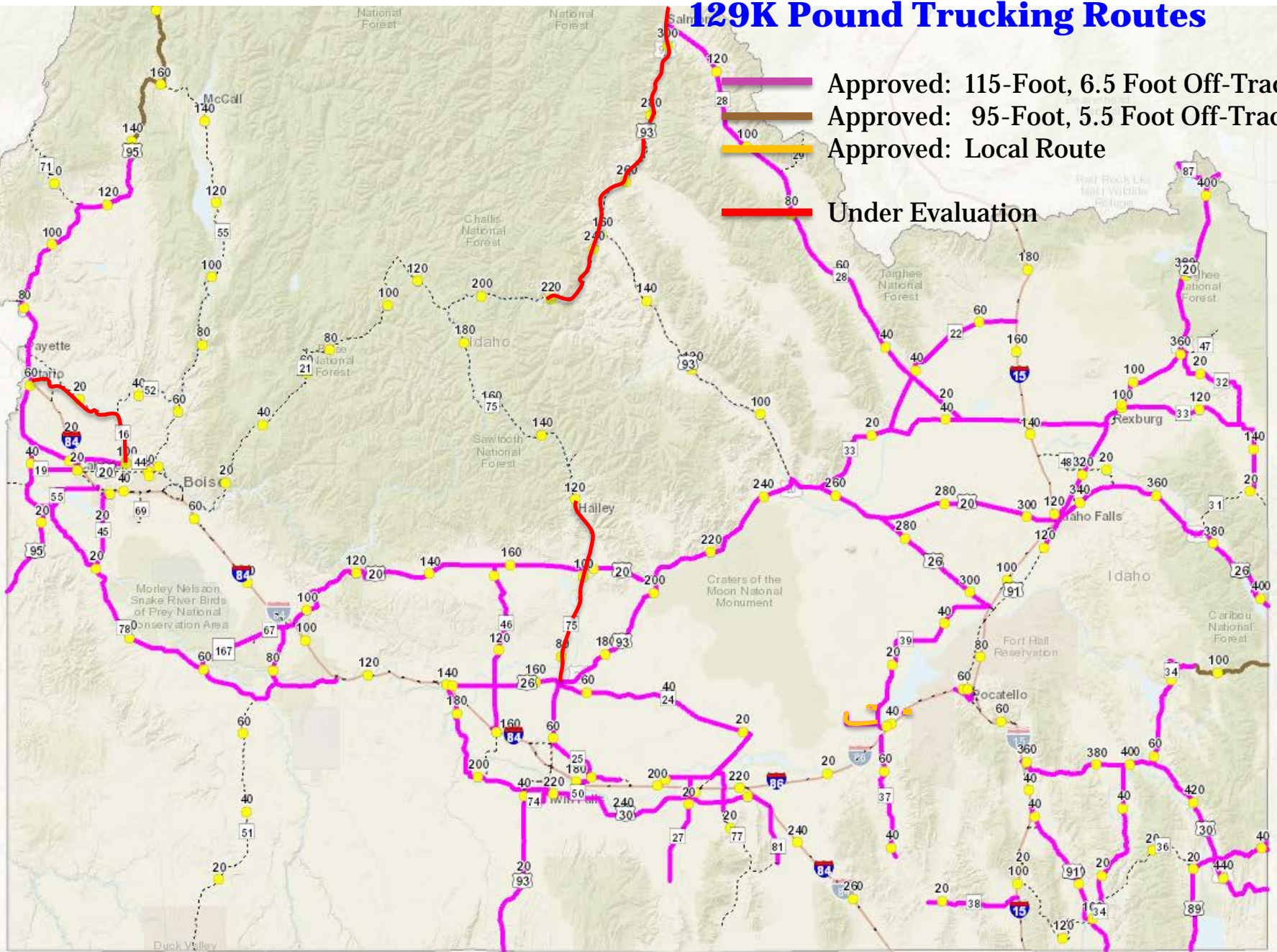
129K Pound Trucking Routes

- Approved: 115-Foot, 6.5 Foot Off-Track
- Approved: 95-Foot, 5.5 Foot Off-Track
- Approved: Local Route
- Under Evaluation

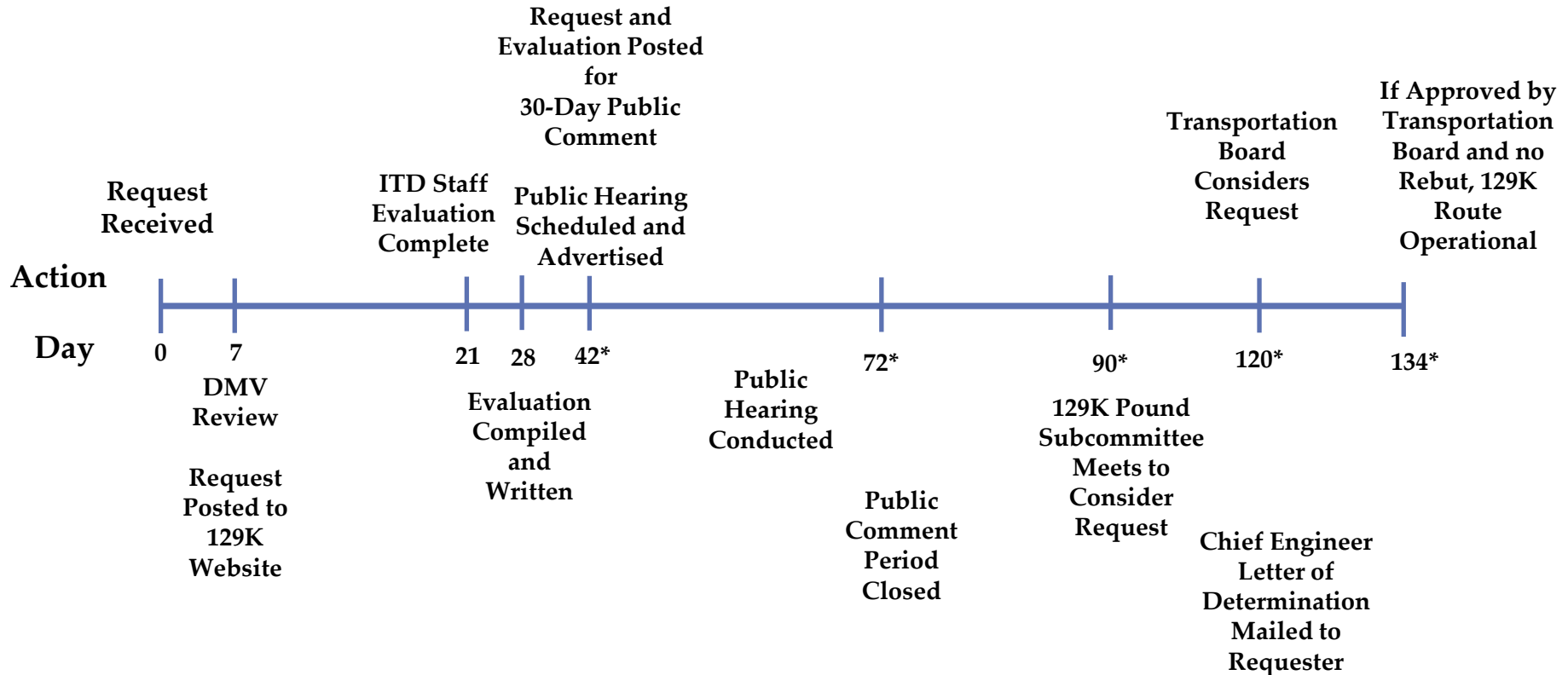


129K Pound Trucking Routes

- Approved: 115-Foot, 6.5 Foot Off-Track
- Approved: 95-Foot, 5.5 Foot Off-Track
- Approved: Local Route
- Under Evaluation



129,000 Pound Trucking Timeline Goals



*** Estimate and Based on Scheduling Timeline**



Trucking Advisory Council

Jeff Marker

(208) 334-8462

jeffrey.marker@itd.idaho.gov



YOUR Safety • • • ► YOUR Mobility • • • ► YOUR Economic Opportunity