

ITD Winter Operations

Trucking Advisory Council

April 11 2018



YOUR *Safety* • • • ► YOUR *Mobility* • • • ► YOUR *Economic Opportunity*

The Evolution of ITD winter operations

- History
 - Traditional response as recent as 6 years ago
 - Reactive instead of proactive
 - Adverse conditions such as snow floor and icy spots were common for long durations of time
 - Accident numbers were high
 - A response to the event was considered success
 - Roads were plowed to make it passible
 - Heavy equipment used for cutting snowfloor



The Evolution of ITD winter operations

Fall 2011 ITD created the first winter performance measures

- **Winter Performance index-** measured how well we deiced the roadways
- **Mobility-**measured how well we prevented ice and snow floor

These measures evaluated how effective we used chlorides and set a expectation on performance.



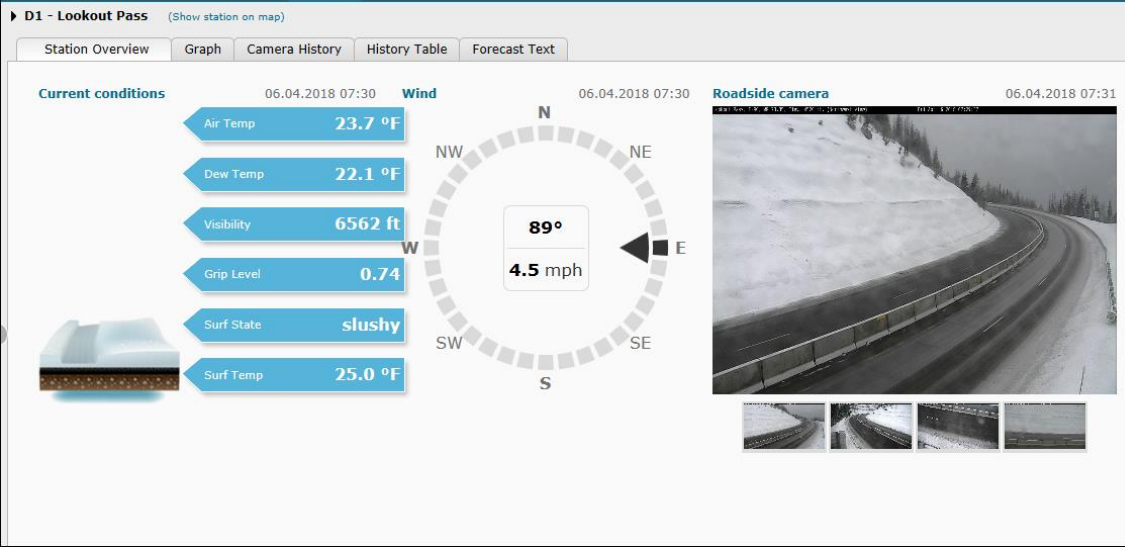
The Evolution of ITD winter operations

New Best Management Practices, training and strategies were constructed around chloride usage and metric attainment

- Proactive responses
- Application matrix
- Bond Breaker management
- No Borders team work
- Safer corridors
- Working through learning curves



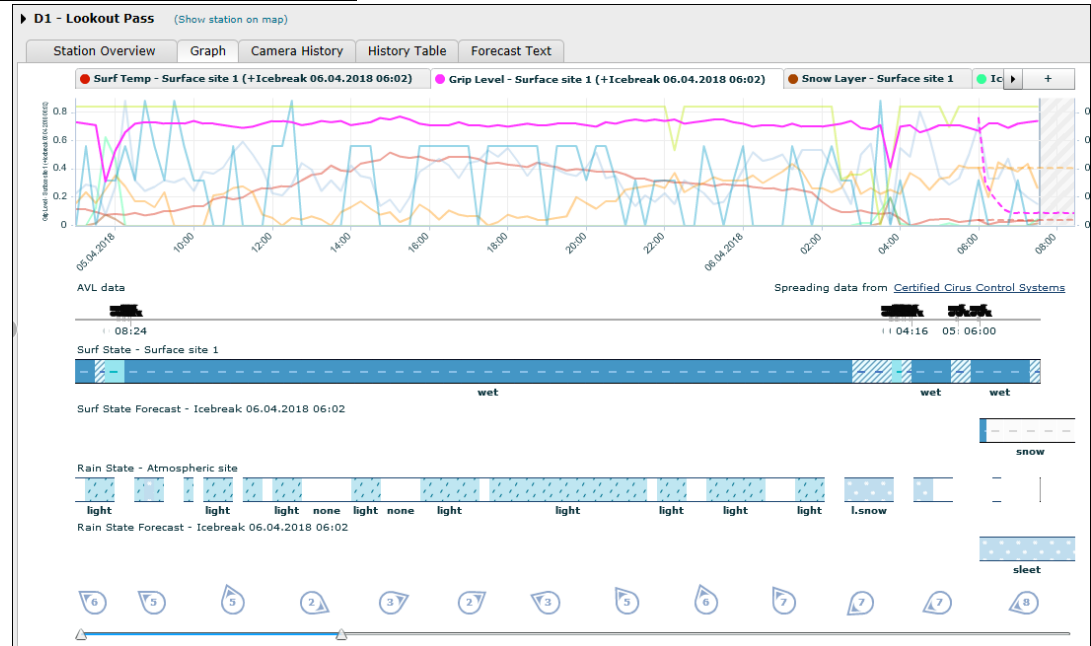
ITD Winter Operations of today!



Good Mobility during events

Managing the bond breaker

AVL Details	
T32147	04:02
Parameter	Value
Driver	4110
Speed	26 mph
Direction	SSE
Front plow	Up
Right wing	Up
Left wing	Up
Air temperature	30.0 °F
Surface temperature	25.2 °F
Blast pass norm	NORMAL
Dry material	SALT
Target dry rate	200 lbs/lane-mile
Actual dry rate	197 lbs/lane-mile



Results of the improvement in operations

Accident Data V.S. Winter Season Severity State Totals October-March

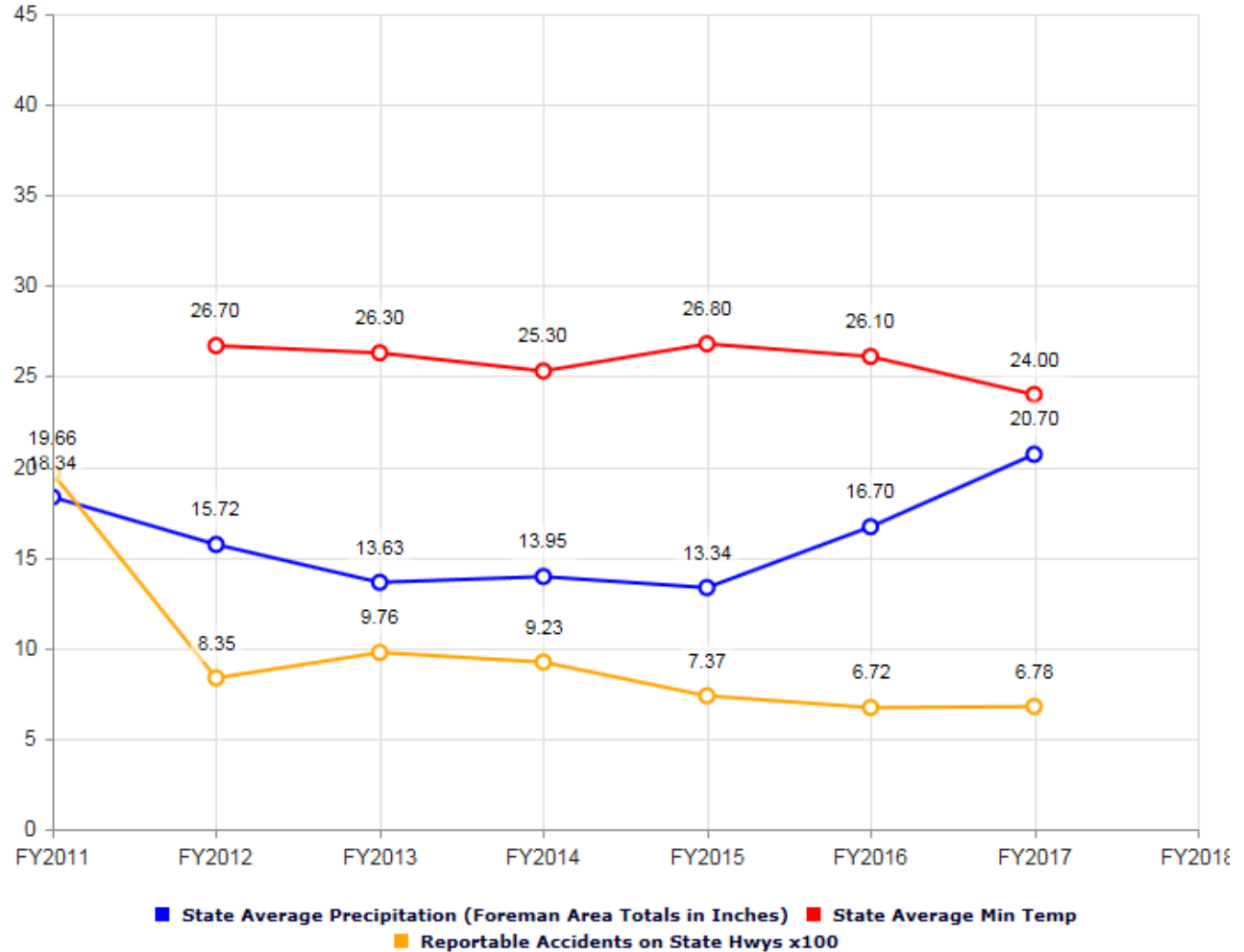


Our Mission:
Your Safety. Your Mobility.
Your Economic Opportunity.

Red line average
surface temp

Blue line average
precipitation in
inches

Yellow line is
number of
accidents x 100



ITD learning curve is continuous

- Training is continuing and evolving
- New technology
- More diverse chloride product selection
- Modification to existing equipment
- Hiring the right individuals for the future
- Accountability through metrics and performance tracking
- Responsible planning for the future



What this means to TAC

- Mobility will be the best possible
- ITD stewardship of chlorides will improve each season
- Future specs for equipment will improve efficiency's and reduce chloride usage
- Corridor management is ramping up
 - Managing surface conditions through other means than chloride usage
 - Mobilizing resources in orchestrated multi crew responses
- New products will be implemented
- Data driven decision making



Questions?

Dennis Jensen
ITD Winter Operations coordinator
208-334-8472
Dennis.Jensen@itd.idaho.gov

