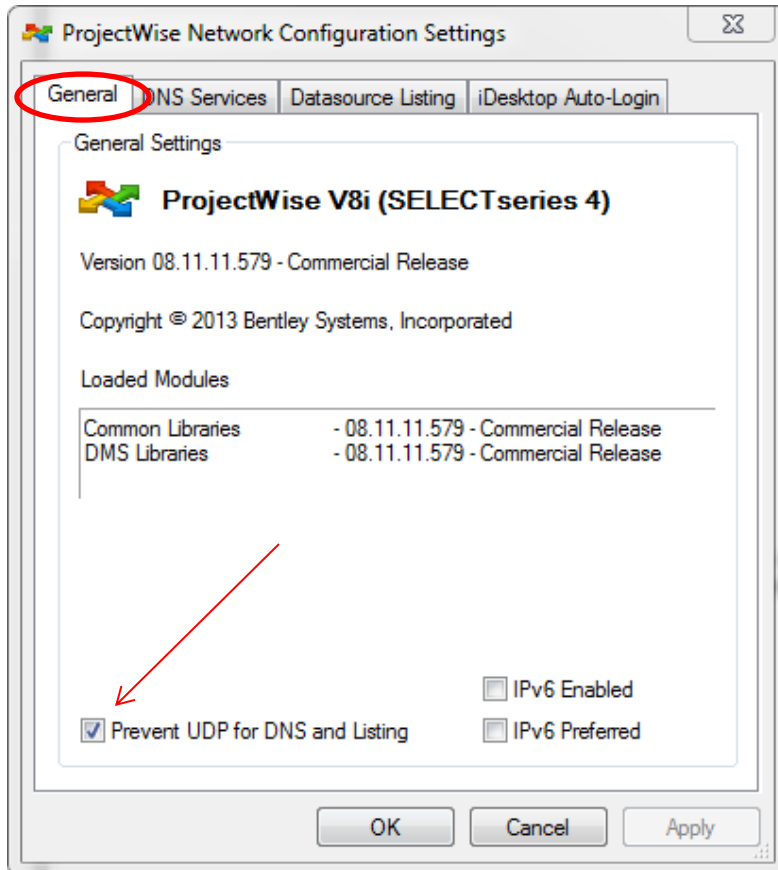
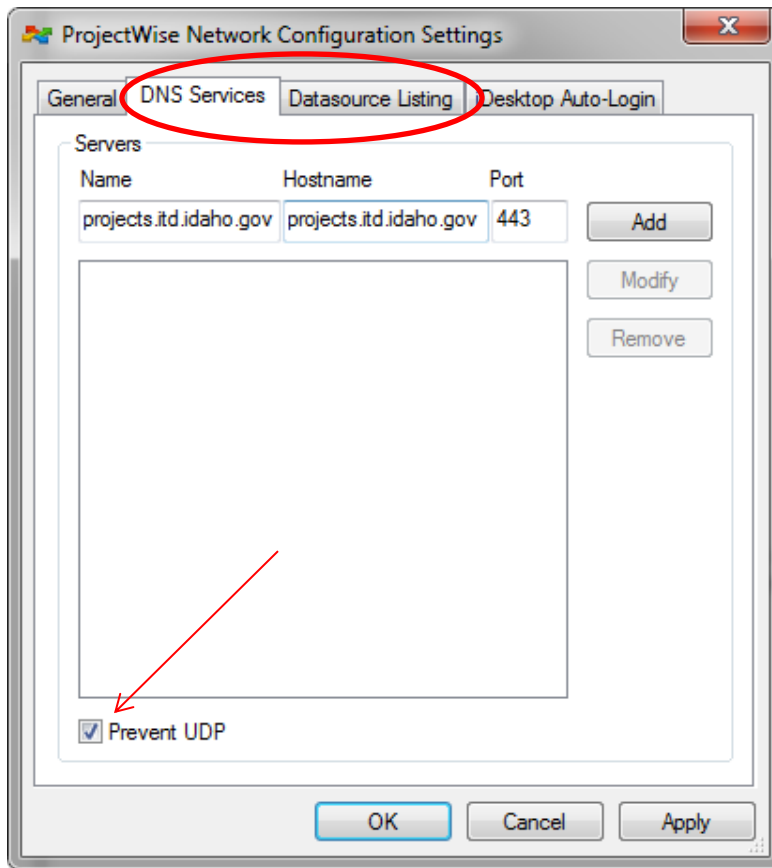


Adding ITD's ProjectWise Datasource to ProjectWise Explorer

1. Open ProjectWise Explorer, select **Tools** from the Menu Bar, and then select **Network Configuration Settings**.
2. Click **Yes** on the pop-up asking if you want to allow the program to make changes.
3. On the **General** Tab, Toggle on **Prevent UDP for DNS and Listing**



4. On the **DNS Services** Tab, Toggle the **Prevent UDP** box
5. Enter **projects.itd.idaho.gov** in the Name and Hostname box's and enter **443** in the port Box, click **Add** button.
6. Repeat the same steps for the **Datasource Listing** Tab.



7. Click Save
8. Close and ReOpen ProjectWise

Login to ProjectWise

1. Double Click the PWITD(Gateway) Datasource and the login screen will appear
2. In the User Name: field enter **ITD/** followed by your ITD username
3. In the Password: field enter your ITD Log in

