

# Smiley Creek (U87)

## Recommended Standard Operating Procedures





## Introduction

Welcome to Smiley Creek, one of Idaho's premier backcountry airstrip destinations. Mountain flying in Idaho is one of general aviation's most gratifying flight experiences. Idaho has nearly 100 backcountry airstrips that offer access to unequaled outdoor recreation such as camping, fishing and hiking.

At the same time, flying in the mountains of Idaho is a serious, challenging endeavor and the number of recent accidents attests to that fact. Safe backcountry flying requires rock-solid skills in slow flight, airspeed control, intimate knowledge of your aircraft performance and well-prescribed personal limitations. Most of all, safe backcountry flying requires the proper attitude, one that is safe, conservative and professional. A safe flight is a stress-free and enjoyable flight.

The procedures in this document are not a substitute for proper mountain flying training. Pilots interested in developing such skills will find excellent flight training resources on page 1 of this document.

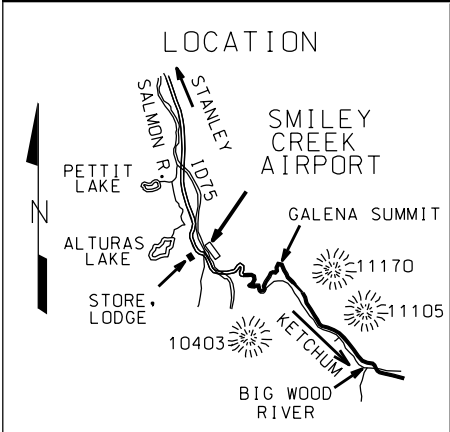
These preferred operating procedures were collaboratively developed by the FAA, NTSB, local flight training providers and the Idaho Division of Aeronautics. Our goal is to set a standard for safe operating practices at the Smiley Creek Airport. These include proper planning, communications, traffic patterns and inflight decision-making. They are proven procedures based on safe operating practices that will ensure your Idaho flying experience is a safe and enjoyable one.

We look forward to your safe arrival at Smiley Creek Airport.

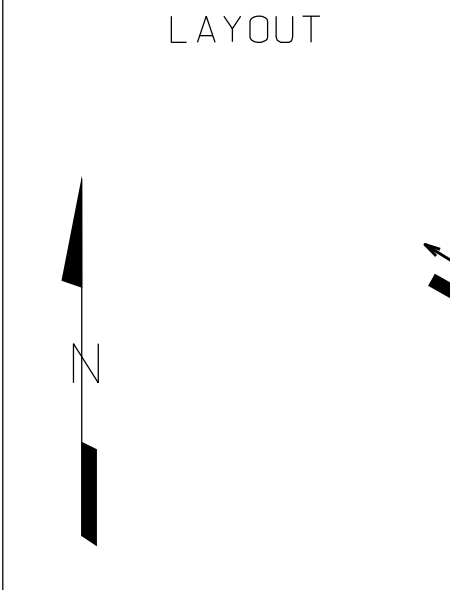
Idaho Division of Aeronautics







LAT 43°54.73' LONG 114°47.76'



ELEVATION 7160

CTAF 122.9

<u>LOCATION</u>	SMILEY CREEK
<u>VOR</u>	
<u>FREQ</u>	
<u>RAD</u>	
<u>NM</u>	
LKT	113.5 188° 72.4
<u>COMMUNICATIONS</u>	CTAF 122.9
<u>NAV AIDS</u>	NO
<u>LIGHTS</u>	NO
<u>ATTENDED</u>	NO

<u>FUEL</u>	NO
<u>SERVICES</u>	TIEDOWNS, COURTESY CAR, FOOD & LODGING ADJACENT AREA, CAMPGROUND. SHOWERS AND PHONE AVAILABLE WHEN ATTENDED. WI-FI AVAILABLE AT LODGE.
<u>MANAGER</u>	208-334-8775, STATE OPERATED 208-774-2984 (AIRPORT)
<u>FBO(s)</u>	NO

REMARKS NORMALLY LAND RWY 14, DEPART RWY 32 . CHECK AIRCRAFT PERFORMANCE FOR HIGH DENSITY ALTITUDE. BE ALERT FOR SPRINKLER STAND PIPES ON EDGE OF RWY. RWY 14-32 EDGES AND THRESHOLDS MARKED WITH WHITE ROCK. NO WINTER MAINTENANCE.





## Preflight Planning

Smiley Creek (U87) is part of the vast network of Idaho backcountry airstrips. Careful reading and adherence to the procedures in this manual are essential to maintaining the safety at this particular backcountry airport. Flight planning should include:

- thorough aircraft maintenance status,
- familiarity with NOTAMs,
- backcountry operations,
- Idaho mountain flying tips,
- **density altitude calculations**,
- common courtesies,
- backcountry etiquette,
- weather en-route and during your stay,
- search and rescue procedures and
- survival gear.

**Do not** attempt operations at Smiley Creek without having a solid fundamental background in mountain flying. The Idaho Division of Aeronautics strongly recommends that visiting pilots obtain an airport checkout before landing at Smiley Creek Airport. The Idaho Aviation Association (IAA) now has a page where instructors list their services and specialties:

[www.idahoaviation.com/instructors.php](http://www.idahoaviation.com/instructors.php)

## Route Planning

### Arrivals

### Landing Runway 14

It is **recommended** that you land runway 14, wind permitting. Make your initial arrival call on 122.9 at least 5 miles from Smiley Creek Airport. Announce your distance, direction and altitude from Smiley Creek Airport. Maintain 1500' above field elevation (AFE) as applicable or minimum (8650). *Configure your airplane to canyon maneuvering speed. **Begin a descent to a traffic pattern altitude of 1000' AFE.***

*(Smiley Creek Airport) N43 54.73 W114 47.76*

### CAUTION

*There could be numerous airplanes departing and arriving north of the airfield. Consistent position reports, traffic scans and use of landing lights are crucial upon descent and throughout the approach into Smiley Creek Airport.*

If needed, circle to observe the airfield for obstacles and hazards such as airplanes, animals, vehicles, pedestrians and sprinklers.

Conduct a standard left-hand pattern that includes an *upwind, crosswind, downwind, base and final*. Be alert for sprinkler stand pipes on edge of runway and sprinkler heads in parking area.

### Landing Runway 32

### NOTE

*Landing downstream to the north is **NOT recommended**. Landings to the north should only be considered when wind or weather dictates that landing to the south would be unsafe.*

### WARNING

*Be familiar with your aircrafts performance characteristics for **high density altitude operations**. Example: PA of 7000 and OAT of 30C = Density Altitude of 10,480'.*

*See Density Altitude Chart on last page.*

## **Straight in Landing**

Straight in landings to Runway 14 or 32 are **strongly discouraged**.

### **WARNING**

*By not joining the pattern, there is increased risk of a midair collision.*

## **Landing Abort Procedures**

### **Runway 14 and 32**

At your predetermined abort altitude, typically 200-300' AFE, begin your abort and follow the desired abort path (see map). Pick an altitude that will provide a safe abort procedure. Abort altitudes may vary for every type of aircraft and situation. 200-300' AFE is a good altitude for most aircraft.

### **NOTE**

*You must abort the landing early if you cannot land on-speed, on aim-point, and within the first 1/3 of the runway. Early recognition to abort is paramount and requires instinctive action by the pilot.*

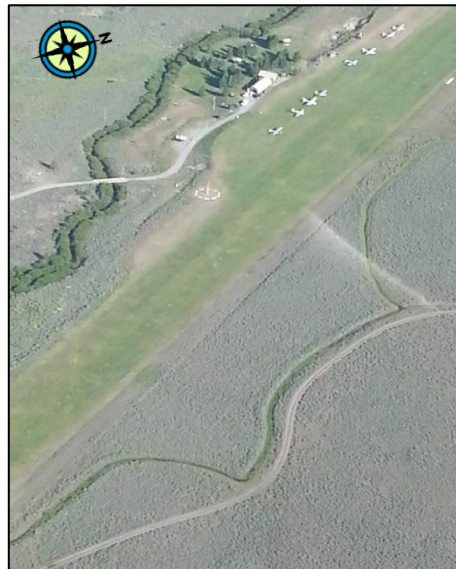


## **Departures**

### **NOTE**

*Declaring intentions, scanning for traffic and use of landing lights are encouraged for departures. Make*

*your initial radio call on 122.9 prior to taxiing. Landing traffic always have the right of way.*

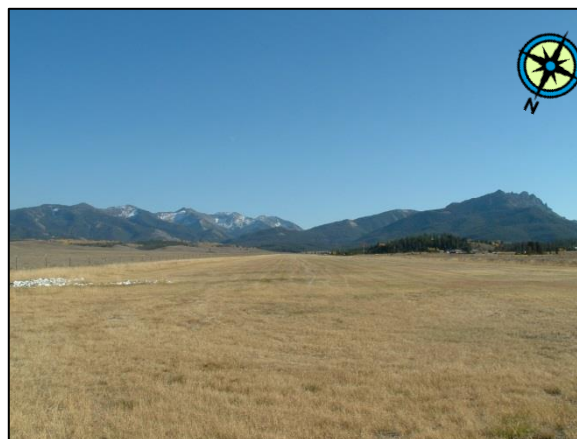


### **Departing Runway 32**

North Departure-Example: "Smiley Creek traffic, Cessna 20836 departing runway 32 climbing north bound."

### **Departing Runway 14 is Strongly Discouraged Why?**

1. Your takeoff path is directly toward rising terrain.
2. You may encounter strong downdrafts.
3. High density altitude conditions have contributed to accidents at Smiley Creek.





## CAUTION

Southerly winds prevail mid-morning through the afternoon. Aircraft should remain on the ground until more favorable conditions exist.

## SAFETY ALERT

### Arrivals

**Be alert for high-density traffic en-route to Smiley Creek Airport during fly-ins**

**Runway 14: Prior to making your base to final turn, be sure to scan the final for any straight-in traffic. Straight-in traffic procedures are strongly discouraged.**

- Make inbound calls at least 5 miles out. State your intentions on backcountry frequency 122.9. Keep communications brief and concise. Refer to the VFR Route Planning section of this guide.

**Example:** *“Smiley Creek traffic, Cessna 20836 is 5 miles northwest of Smiley Creek airport inbound at 9500. We will enter an upwind for landing runway 14 Smiley Creek,” etc.*

- If your landing appears unsafe because of altitude, spacing, speed of preceding aircraft, or any other reason, abort your landing and initiate a go around above 200' AFE.
- **Common Errors:** excessive speed and/or altitude, landing long and late go-arounds.
- Formation arrivals are highly discouraged.

## SAFETY ALERT

### Departures

**Be familiar with high density altitude operations. Use full runway for takeoff.**

- Make a radio call on 122.9 prior to taxiing.

- **Runway 32: Preferred runway for departure towards descending terrain.**

**Example:** *“Smiley Creek traffic Cessna 20836 is taxiing for runway 32 north departure Smiley Creek.”*

- Formation departures are highly discouraged.



## Smiley Creek Airport Notes

- Safety is priority Number One!
- You are always responsible for your safety and the safety of those in your group.
- Mishaps, incidents, or accidents must be reported to the Blaine Co. Sheriff's dispatch at (208) 788-5555, and the Boise FAA Flight Standards Office at (208) 387-4000.
- Be very familiar with high density altitude operations.
- Use of landing lights while in the pattern is recommended.
- Keep radio communications brief and concise. No excessive chatter.
- Landing traffic should clear the runway and expedite to parking.
- Sprinkler heads located in parking area
- Consider remaining in parking until aircraft on final has landed.
- Pilot training is discouraged at Smiley Creek Airport during organized fly-ins.
- Aerobatic maneuvers, formation flying, and low passes are all highly discouraged over Smiley Creek Airport.

- Fuel is not available and no winter maintenance.
- Non-radio equipped aircraft are not recommended during Smiley Creek Airport fly-ins.
- Wi-Fi service available at the lodge.
- Webcams facing northwest/southeast are accessible at [www.idahoaviation.com/webcams.php](http://www.idahoaviation.com/webcams.php)
- During the summer months, sprinklers are active throughout the day.
- Camping located west side adjacent runway.

Download the latest version of this SOP at:

[www.itd.idaho.gov/aero](http://www.itd.idaho.gov/aero)

Click on:

- Publications,
- Airport Operating Procedures

## ***Please – Add these items to your checklist!***

1. Check your ELT on 121.5 after every landing and monitor 121.5 when able during flight.
2. Close your flight plan with the appropriate FAA facility.

**Remember-** 121.5 ELTs are no longer monitored by satellites. Relying on a 121.5 ELT alone could delay an aerial search by hours-even days!  
Consider purchasing a 406 ELT, Personal Locator Beacon (PLB) or SPOT. The search process begins within minutes!

## **Common Courtesy**

- Be considerate of other wilderness users. Fly quiet.
- Minimize practice landings and takeoffs.
- Fly neighborly over town.

## **Important Phone Numbers**

Idaho Division of Aeronautics	208-334-8775
Lockheed Martin Flight Service	800-992-7433
Blaine County Police Dispatch	208-788-5555
Caretaker	208-774-2984

# IDAHO DIVISION OF AERONAUTICS

## (Recommended Airstrip Operating Procedure)



### Legend

 Smiley Creek Airport

Airport Elevation 7160 ft



Smiley Creek Airport

Campground

Lodge

0 300 600 1,200 1,800 2,400 Feet

# IDAHO DIVISION OF AERONAUTICS

(Recommended Airstrip Operating Procedure)

Smiley Creek Airport



# IDAHO DIVISION OF AERONAUTICS

## (Recommended Airstrip Operating Procedure)



### Legend

 Smiley Creek Airport Traffic Pattern



0

0.25

0.5

1

Nautical Miles

# IDAHO DIVISION OF AERONAUTICS

## (Recommended Airstrip Operating Procedure)



### Legend

 Smiley Creek Airport Abort Path



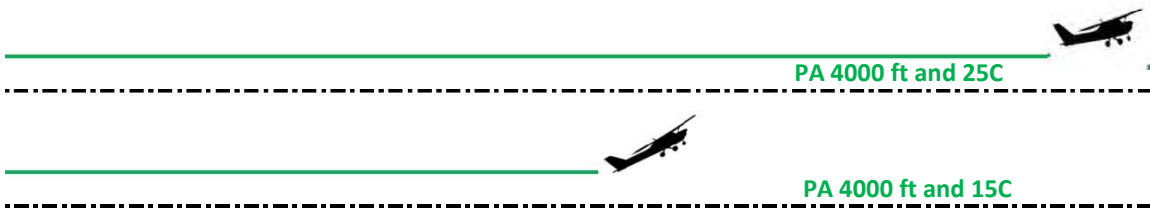
# DENSITY ALTITUDE:

*Have you checked your performance today?*

	<i>(OAT) Outside Air Temperature</i>								
<i>(PA)</i>	0C	5C	10C	15C	20C	25C	30C	35C	40C
<i>* Pressure Altitude Ft.</i>									
2000				2480	3080	3680	4280	4880	5480
3000			3120	3720	4320	4920	5520	6120	6720
4000			4360	4960	5560	6160	6760	7360	7960
5000		5000	5600	6200	6800	7400	8000	8600	9200
6000		6240	6840	7440	8040	8640	9240	9840	10440
7000		7480	8080	8680	9280	9880	10480	11080	11680
8000	8120	8720	9320	9920	10520	11120	11720	12320	12920

*Density Altitude (in red)*

**Rule of Thumb: For every 1 degree C, Density Altitude increases 120ft**



*How will a hot and humid day affect your airplane?*

- It will increase your take-off distance
- It will reduce your climb performance
- It will increase your landing distance

Refer to the performance section in your airplanes Pilot Operating Handbook (POH)

**Enjoy your flight in Idaho.....safely!**

***Always Safety First!***

*Density Altitude Calculator*

*Derived from US National Weather Service Formula*

*\* Obtain PA at airport by setting 2992 in the Kollsman window of the aircraft altimeter*



## Idaho Division of Aeronautics

1390 W Gowen Road

Boise, ID 83705

208-334-8775

[www.itd.idaho.gov/aero](http://www.itd.idaho.gov/aero)