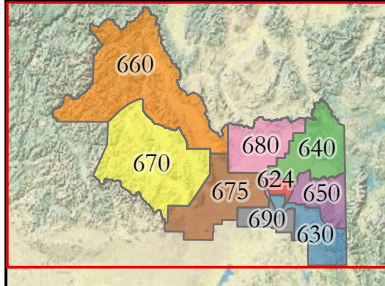
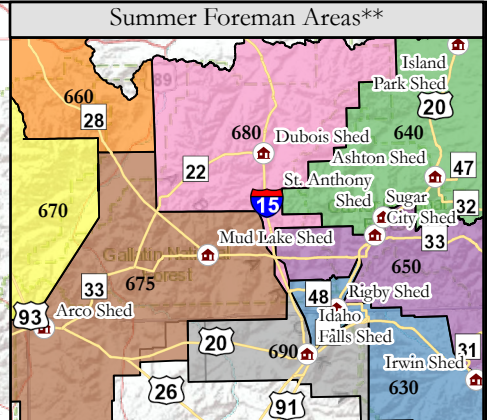
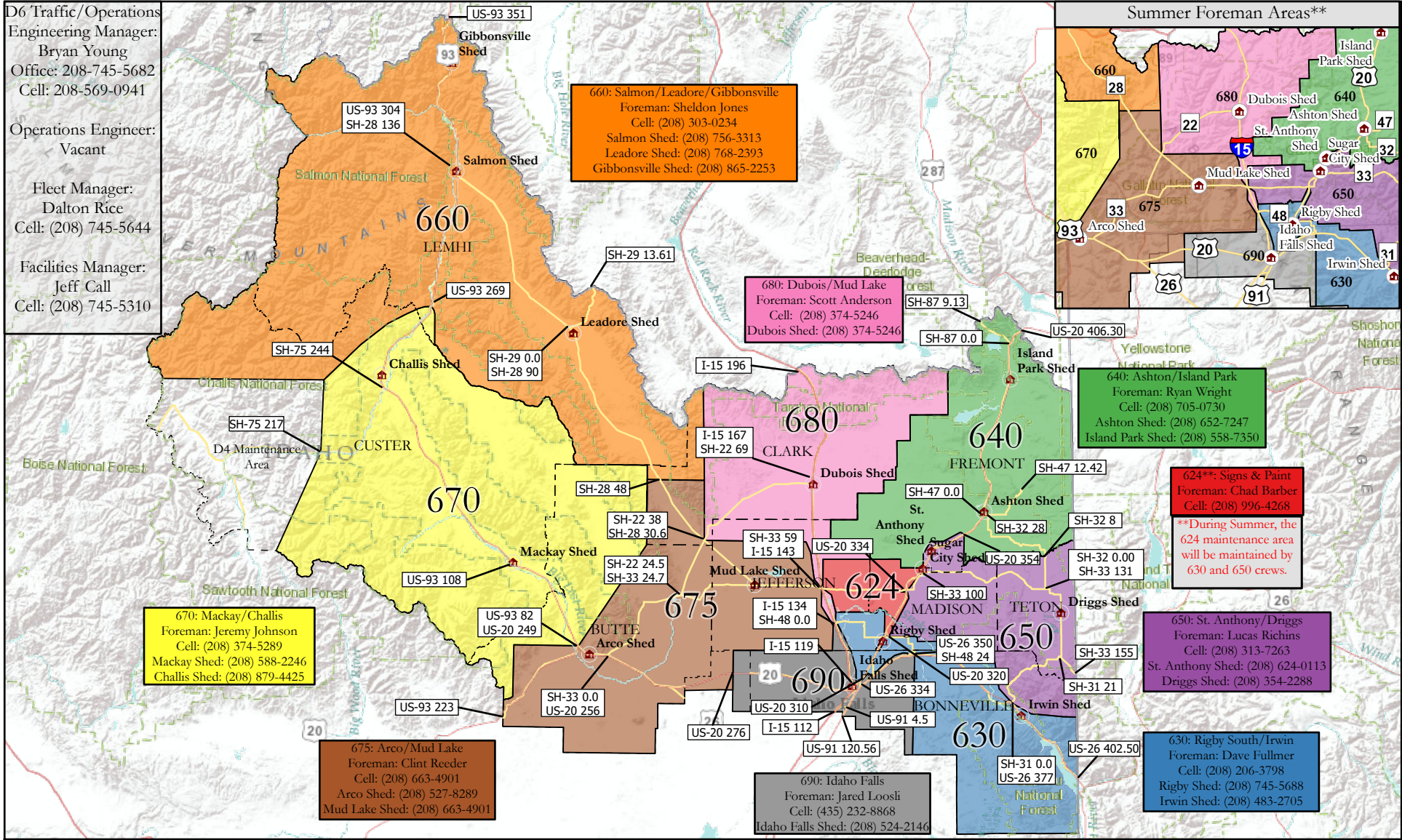


D6 Traffic/Operations  
 Engineering Manager:  
 Bryan Young  
 Office: 208-745-5682  
 Cell: 208-569-0941

Operations Engineer:  
 Vacant

Fleet Manager:  
 Dalton Rice  
 Cell: (208) 745-5644

Facilities Manager:  
 Jeff Call  
 Cell: (208) 745-5310



# District 6 Foreman Areas

ITD, Copyright:© 2013 National Geographic Society, i-cubed, Sources: Esri, USGS, NOAA, Sources: Esri, Garmin, USGS, NPS



## 2023

Coordinate System: NAD 1983 2011 StatePlane Idaho East FIPS 1101 Ft US

