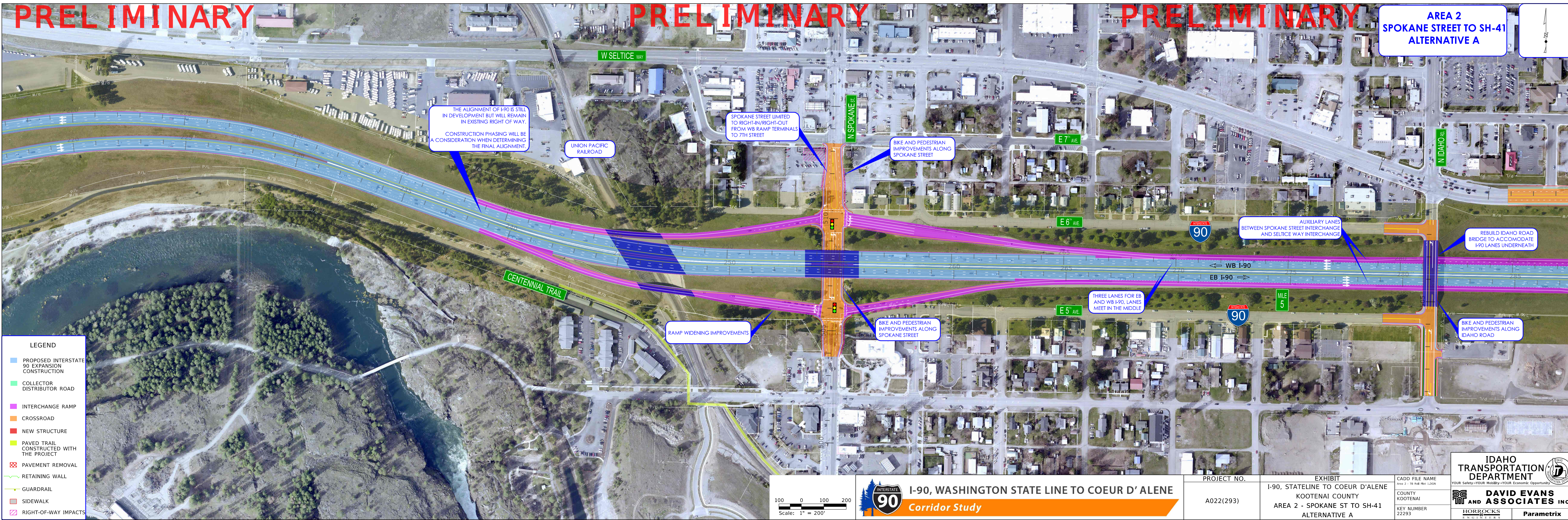
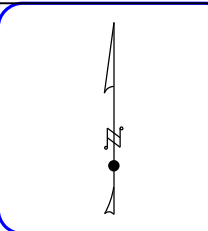


PRELIMINARY

PRELIMINARY

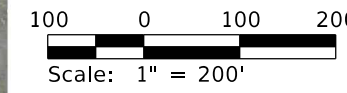
PRELIMINARY

AREA 2
SPOKANE STREET TO SH-41
ALTERNATIVE A



LEGEND

- PROPOSED INTERSTATE 90 EXPANSION CONSTRUCTION
- COLLECTOR DISTRIBUTOR ROAD
- INTERCHANGE RAMP
- CROSSROAD
- NEW STRUCTURE
- PAVED TRAIL CONSTRUCTED WITH THE PROJECT
- PAVEMENT REMOVAL
- RETAINING WALL
- GUARDRAIL
- SIDEWALK
- RIGHT-OF-WAY IMPACTS



I-90, WASHINGTON STATE LINE TO COEUR D'ALENE
Corridor Study

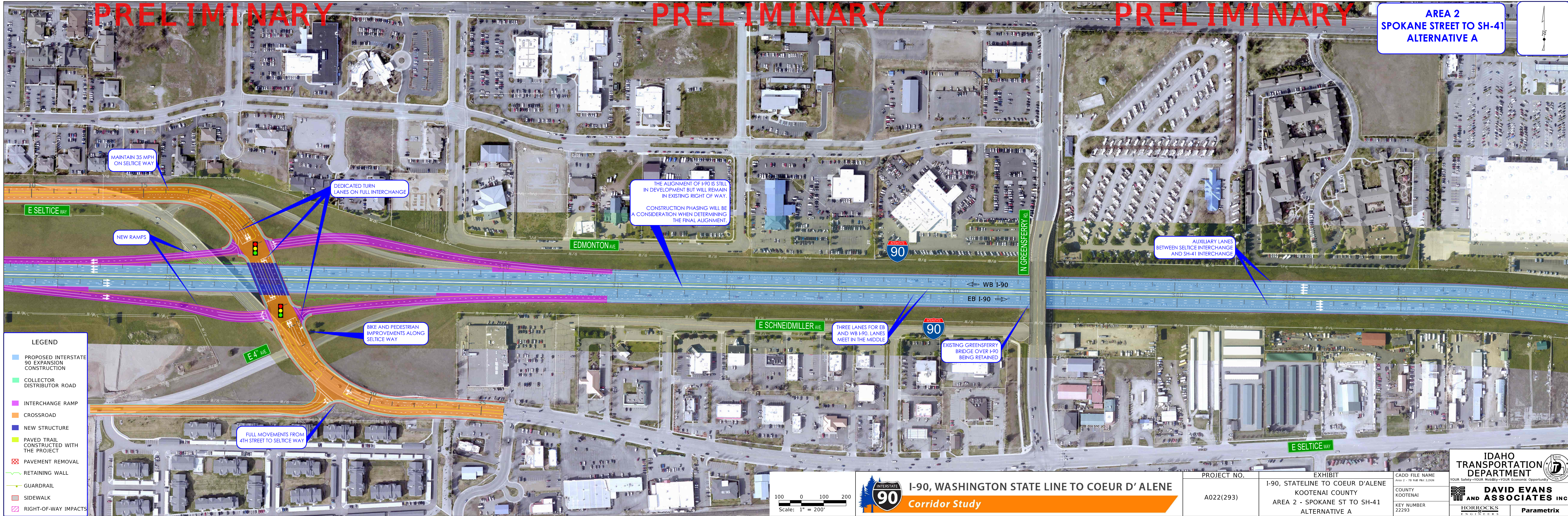
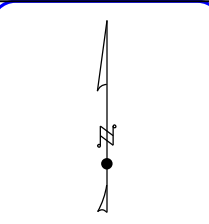
PROJECT NO.	EXHIBIT	CADD FILE NAME	IDAHO TRANSPORTATION DEPARTMENT	
A022(293)	I-90, STATELINE TO COEUR D'ALENE KOOTENAI COUNTY AREA 2 - SPOKANE ST TO SH-41 ALTERNATIVE A	Area 2 - 7B Ball Plot 120N	YOUR Safety-YOUR Mobility-YOUR Economic Opportunity	
		COUNTY KOOTENAI	DAVID EVANS AND ASSOCIATES INC.	
		KEY NUMBER 22293	HORROCKS ENGINEERS Parametrix	

PRELIMINARY

PRELIMINARY

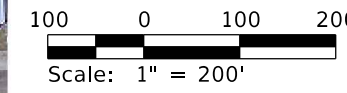
PRELIMINARY

AREA 2
SPOKANE STREET TO SH-41
ALTERNATIVE A



LEGEND

- PROPOSED INTERSTATE 90 EXPANSION CONSTRUCTION
- COLLECTOR DISTRIBUTOR ROAD
- INTERCHANGE RAMP
- CROSSROAD
- NEW STRUCTURE
- PAVED TRAIL CONSTRUCTED WITH THE PROJECT
- PAVEMENT REMOVAL
- RETAINING WALL
- GUARDRAIL
- SIDEWALK
- RIGHT-OF-WAY IMPACTS



I-90, WASHINGTON STATE LINE TO COEUR D'ALENE
Corridor Study

PROJECT NO.	EXHIBIT	CADD FILE NAME	IDAHO TRANSPORTATION DEPARTMENT	
A022(293)	I-90, STATELINE TO COEUR D'ALENE KOOTENAI COUNTY AREA 2 - SPOKANE ST TO SH-41 ALTERNATIVE A	Area 2 - TB Rail Mar 21,2024	YOUR Safety-YOUR Mobility-YOUR Economic Opportunity	
		COUNTY KOOTENAI	DAVID EVANS AND ASSOCIATES INC.	
		KEY NUMBER 22293	HORROCKS ENGINEERS Parametrix	

I-90 FOUR-LANE TYPICAL SECTION SPOKANE STREET TO SH-41

