



# Idaho Transportation Department

## *Native Plant & Pollinator Projects*

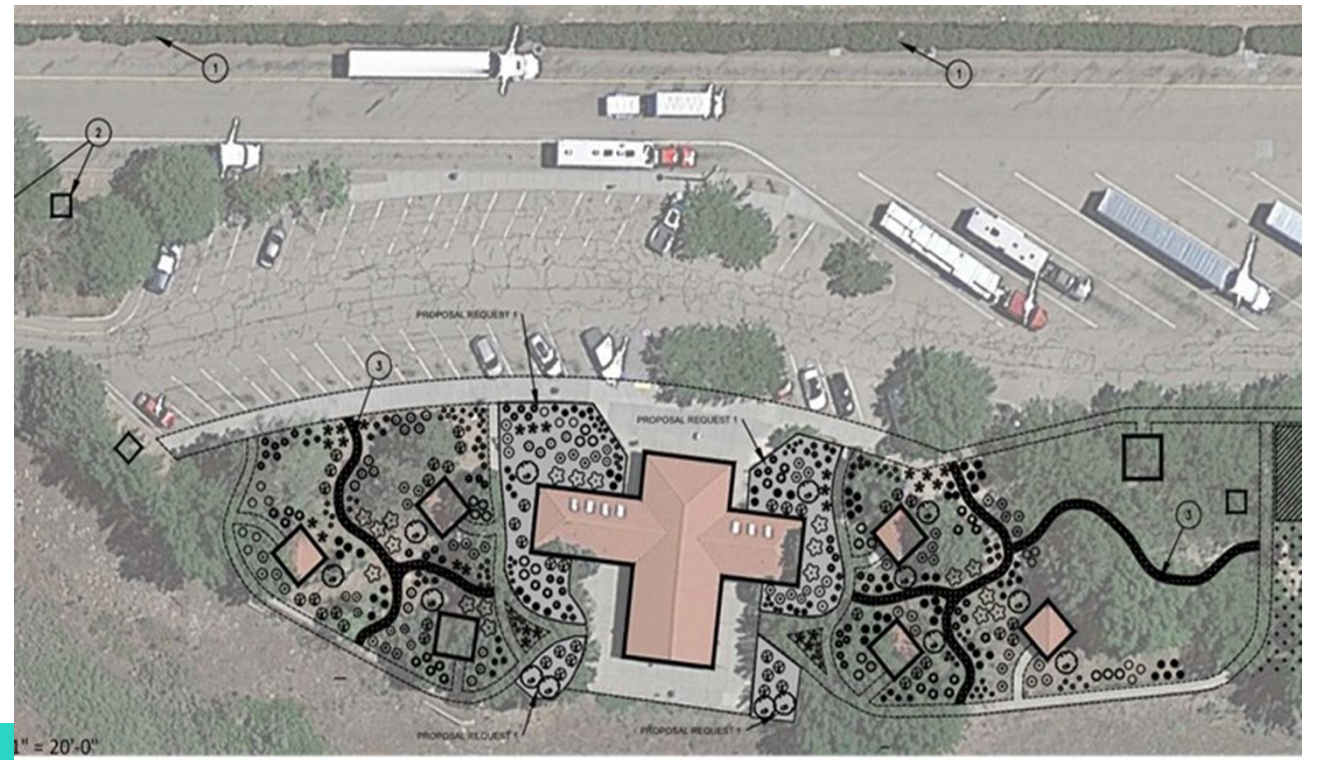
*Cathy Ford Statewide Program  
Manager*





Bliss Rest Area Pollinator Garden

Snake River Rest Area Native Plant Garden



# Idaho Arid Regions

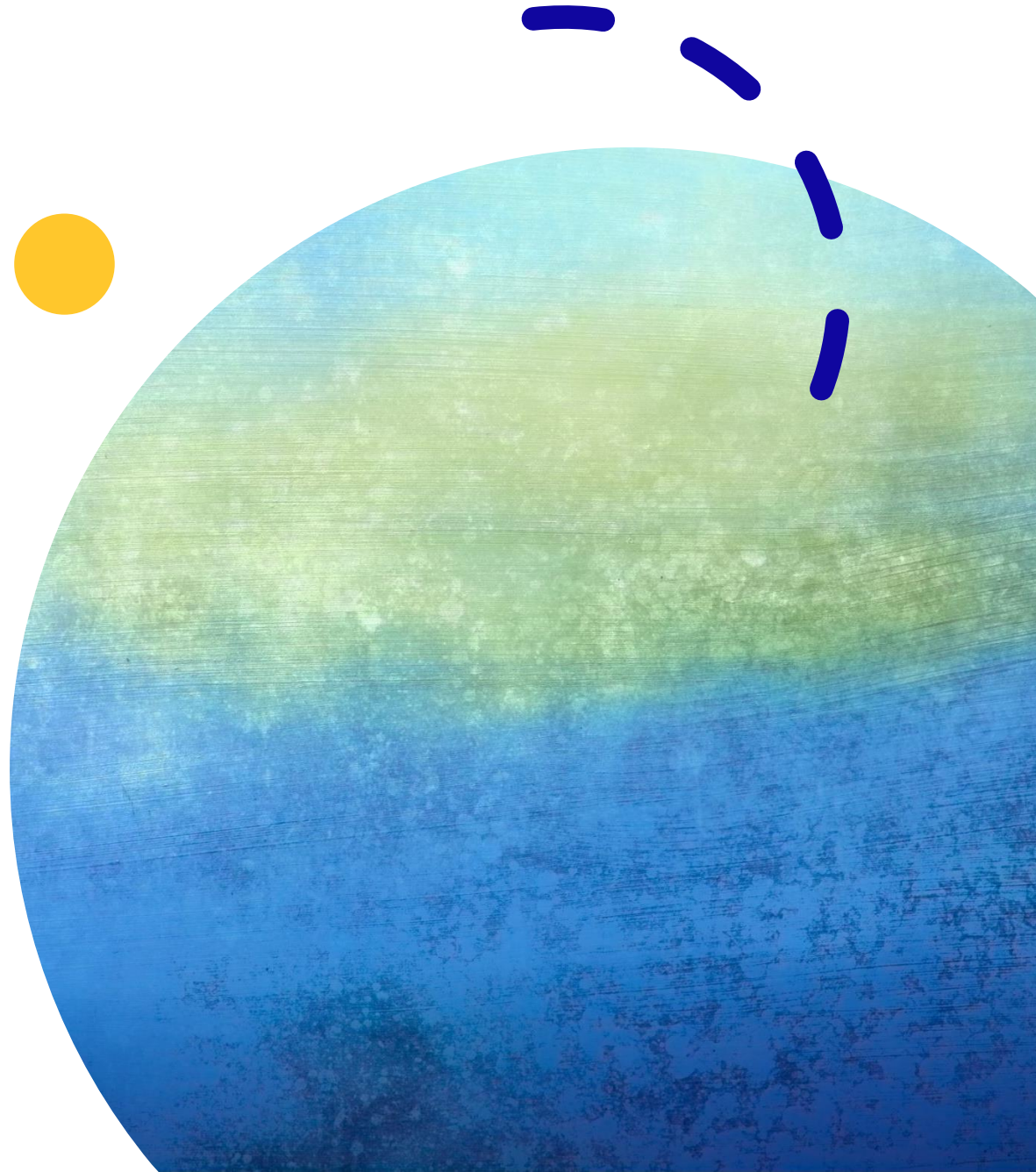
- Southern Idaho is part of the Intermountain West (Region) and include several ecoregions.
- The intermountain west is located between the front ranges of the Rocky Mountains on the east and the Cascade Range and Sierra Nevada on the west.
- The topography consists of the Great Basin which is the largest area of contiguous endorheic watersheds in North America.
  - It spans nearly all of Nevada, much of Oregon and Utah, and portions of California, Idaho, and Wyoming.
  - It is noted for both its arid climate and the basin and range topography.
  - The region spans several physiographic divisions, biomes, ecoregions, and deserts.
- The flora at lower elevations includes deserts and xeric shrublands and temperate grasslands and shrublands biome vegetation.
- Higher elevation montane habitats include temperate coniferous forests biome vegetation, including groves and forests of various species of pine, cedar, juniper, aspen, and other trees, and understory shrubs, & perennials



# Pollinator Partnerships & Funding

## The Westbound Bliss Rest Area, I-84, Idaho

- A partnership with the Bureau of Land Management (BLM) and the US Fish and Wildlife Service (USFWS) & ITD District Four Office
  - Create a pollinator garden and provide public awareness
- Funding from USFWS & BLM; resources and materials from ITD;
- landscape plan and installation by Living Earth LLC.
- Partnerships like this are necessary to leverage funding, knowledge and resources that one partner alone might not have.
- The Bliss Rest Area on I-84 in Idaho is buzzing with pollinators, demonstrating to the traveling public what is possible in an arid region of Idaho.



# Bliss RA Pollinator Garden Design

LEGEND		
COMMON NAME	BOTANICAL NAME	QTY
FLOWER, GRASS		
GREAT BASIN WILDRIE	LEYMUS CINEREUS	3
SAND DROPSEED	SPOROBOLUS CRYPTANDRUS	5
FLOWER, PERENNIAL		
BEE BALM	MONARDA MENTHAEOFOLIA 'NATIVE ROOTS'	5
GIANT PURPLE SAGE	SALVIA PACHYPHYLLA 'NATIVE ROOTS'	5
GOLDENEYE	VIGUIERA DENTATA	3
GOLDENROD	SOLIDAGO VIRGAUREA	3
HOARY TOWNSEND'S DAISY	TOWNSENDIA INCANA 'NATIVE ROOTS'	3
INDIAN RICEGRASS	ORYZOPSIS HYMENOIDES	3
ORANGE GLOBEMALLOW	SPHAERALCEA MUNROANA 'NATIVE ROOTS'	3
PENSTEMON, FIRECRACKER	PENSTEMON EATONI	4
PENSTEMON, SAGEBRUSH	PENSTEMON SPECIOSUS	3
PENSTEMON, SAND-DUNE	PENSTEMON ACUMINATUS	3
ROCKY MOUNTAIN PENSTEMON	PENSTEMON STRICTUS 'NATIVE ROOTS'	3
SNAKEWEED, BROOM	GUTIERREZIA SAROTHRAE	3
SULFER-FLOWER BUCKWHEAT	EROGONIUM UMBELLATUM VAR. DICHROCEPHALUM	6
THREADLEAF GIANT HYSSOP	AGASTACHE RUPESTRIS 'NATIVE ROOTS'	3
TUFTED EVENING PRIMROSE	OENOTHERA CAESPITOSA 'NATIVE ROOTS'	3
SHRUB, DECIDUOUS		
DESERT FERNBUSH	CHAMAEBATIARIA MILLEFOLIUM 'NATIVE ROOTS'	2
MILKWEED, BUTTERFLY	ASCLEPIAS TUBEROSA	5
RUBBER RABBITBRUSH	CHRYSOETHAMNUS NAUSEOSUS	3
SHRUB, EVERGREEN BROADLEAF		
CURL LEAF MOUNTAIN MAHOGANY	CERCOCARPUS LEDIFOLIUS 'NATIVE ROOTS'	3
TREE, DECIDUOUS		
ASH, MOUNTAIN	SORBUS AUCUPARIA	1

\*\*\*\*\*



Steven Paulsen  
General Manager  
Living Earth L.L.C.  
2475 E 3600 N  
TWIN FALLS, ID 83301  
(208) 944-3212



K & L Design L.L.C.  
Kyle@KandLDesign.net  
(801) 671-9337  
KandLDesign.net

**BLISS REST AREA WEST BOUND LANDSCAPE**  
IDAHO TRANSPORTATION DEPARTMENT I-84 AT MILEPOST 133, WEST BOUND  
CATHY.FORD@ID.IDAHO.GOV OFFICE: (208) 334-8416 CELL: (208) 841-4978  
**SITE PLAN - PHASE I**



**SCALE**  
11" x 17" SHEET  
1" = 20.72'  
24" x 36" SHEET  
1" = 9.51'

DESIGN		DATE	BY
INITIAL DESIGN		12/18	CF
REVISIONS		DATE	BY
REVISOR	REVISION		
REVISOR	REVISION		
REVISOR	REVISION		

**SHEET**  
**L2**



# Bliss Rest Area Pollinator Garden

- Site Implementation Plan
  - Weed Abatement: removal of grass and weeds
  - Site Preparation
  - Gravel or decomposed granite mulch
  - Plant native Idaho plants with a mix of colors, bloom times, different heights
- Site Preparation
  - Weed removal
  - Path outlined
  - Install drip system – temporary watering 2-3 years
- Planting and Mulch
- Weed Management





# Project Completed Fall 2018







Summer 2021









Column1	2401 ITD Snake River Rest Stop Plants	Column2	Column3
anity	Type	Size	Sub Suggestion
6	Curl Leaf Mountain Mahogany/Cercocarpus Lediflou	5GL	Cotoneaster al
18	Broom Snakeweed/Gutierrezia Sarothrae	1gl	<del>Forsythia i She</del>
11	Goldenrod/Solidago Virgaurea	1gl	Solidago c Gol
10	Indian Ricegrass/Oryzopsis Hymenoides	1gl	Grass Festuca
10	Goldeneye/Viguiera Dentata	1gl	Coreopsis Nan
14	Sagebrush Penstemon/Penstemon Speciosus	1gl	Penstemon Pil
4	Orange Globemallow/Sphaeralcea Munroana	1gl	Geum Fireston
5	Threadleaf Giant Hyssop/Agastache Rupestris	1gl	Agastache Sun
6	Desert Fernbush/Chamaebatiaria Millefolium	1gl	Spiraea pr Brid
12	Hoary Townsends Daisy/Townsendia Incana	1gl	Cerastium Sno
6	Rocky Mountain Penstemon/Penstemon Strictus	1gl	Penstemon Ro
6	Great Basin Wildrye/Leymus Cinerus	1gl	Grass Leymus
3	Giant Purple Sage/Salvia Packyphylla	1gl	Agastache Kuc
4	Sand Dropseed/Sporobolus Crypandrus	1gl	<del>Grass Schiz-Th</del>
6	Bee Balm/Monarda Menthaefolia	1gl	Monarda Pardu
2	Firecracker Penstemon/Penstemon Eastonii		
4	Rubber Rabbitbrush/Chrysothamnus Nauseosus		
22	Sulfur-Flower Buckwheat/Ergonum Umbellatum Dichrocephalum		
6	Turted Evening Primrose/Oenothera Caespitosa		

## Snake River Rest Area Native Plant Garden









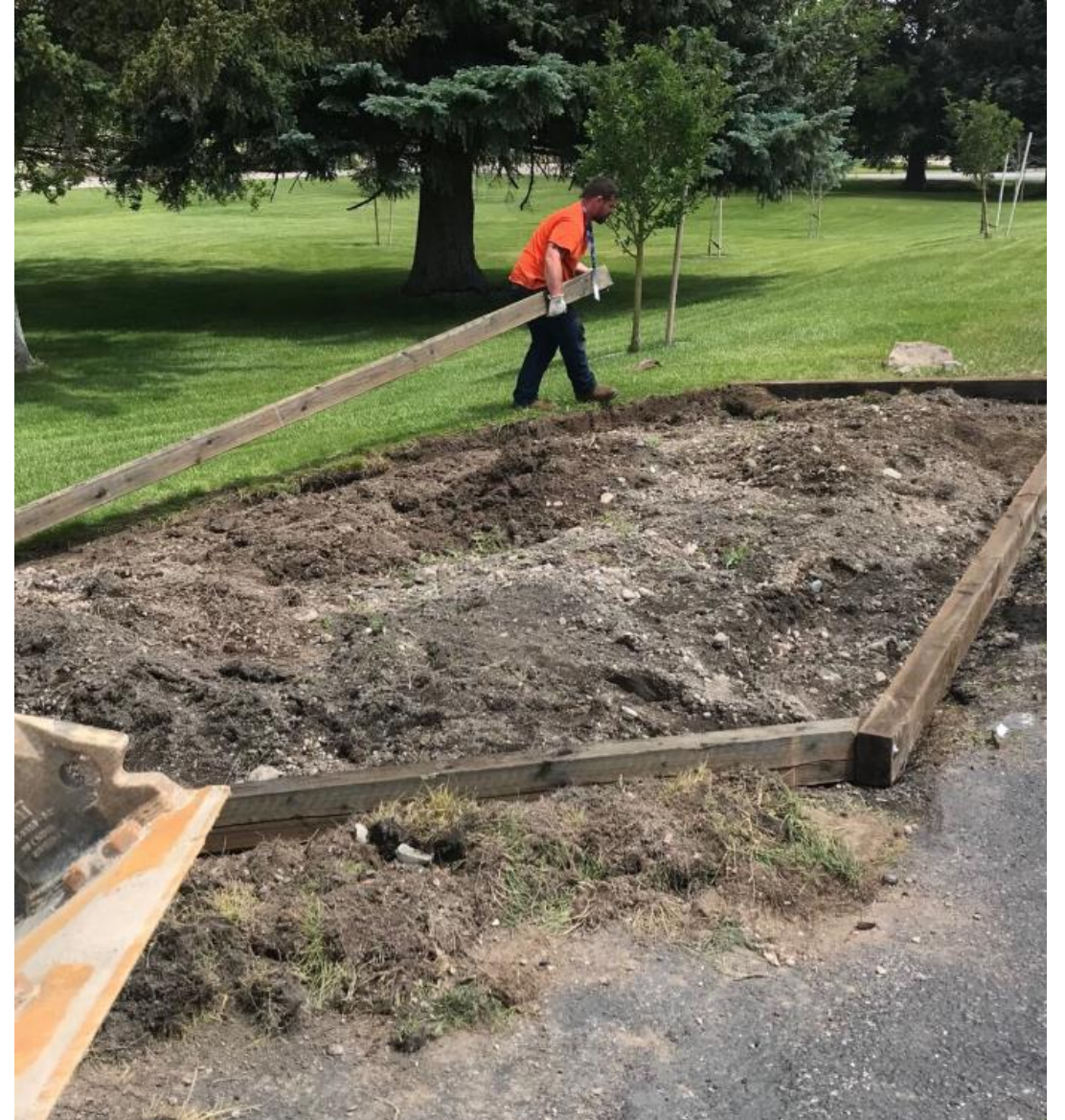




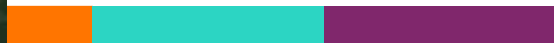


# District 5 Pollinator Garden









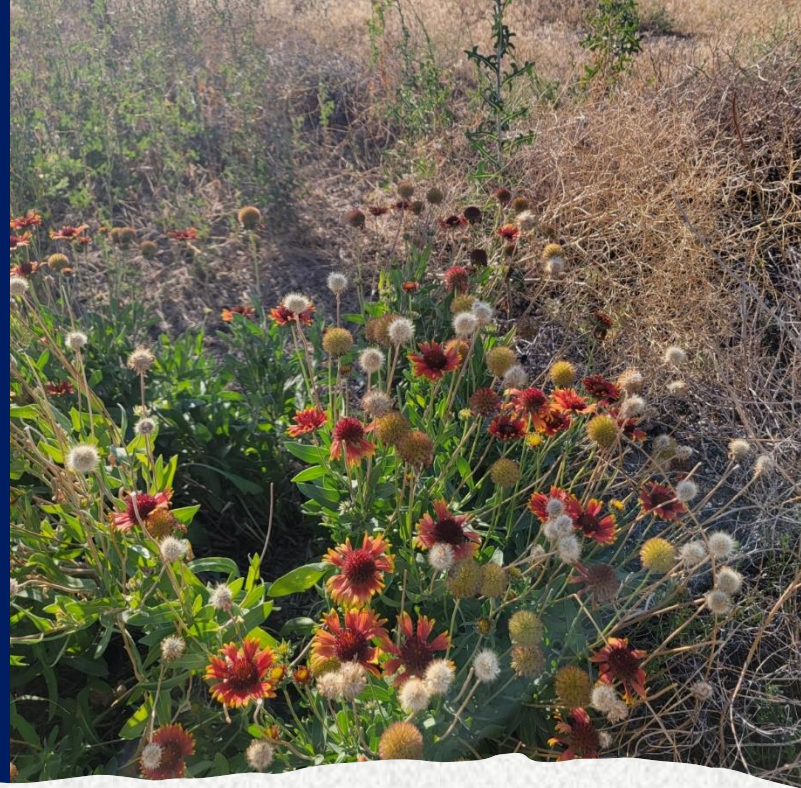




## Future Considerations:

- **Beginning of Project**
  - Communicate with Ops teams on new mowing schedule and knowing what natives were planted/seeded.
  - Planning – Decide how to manage garden (no mow zones, reseed, weeding, etc.). This is a work in progress.
  - Communicate agency/department objectives & goals
    - Shifting from traditional veg management practices.
- **Construction**
  - Specify appropriate seed mix and specify locations of plantings.
  - Engage leadership, design & maintenance folks.
  - Engineering and contractors don't really have a dog in the fight – they just want to be able to procure and install materials without extra hassle to the project.
  - SOIL – salvage, protection, reuse – building decent soil from scratch, protecting installed work, as well as keeping to the planned SCHEDULE in seedbed prep and seeding install.
  - Discuss and agree upon post-install
  - maintenance/stewardship for 1-3 years.





## Weed and Site Management

- Need to manage weeds and plan for site maintenance – ongoing