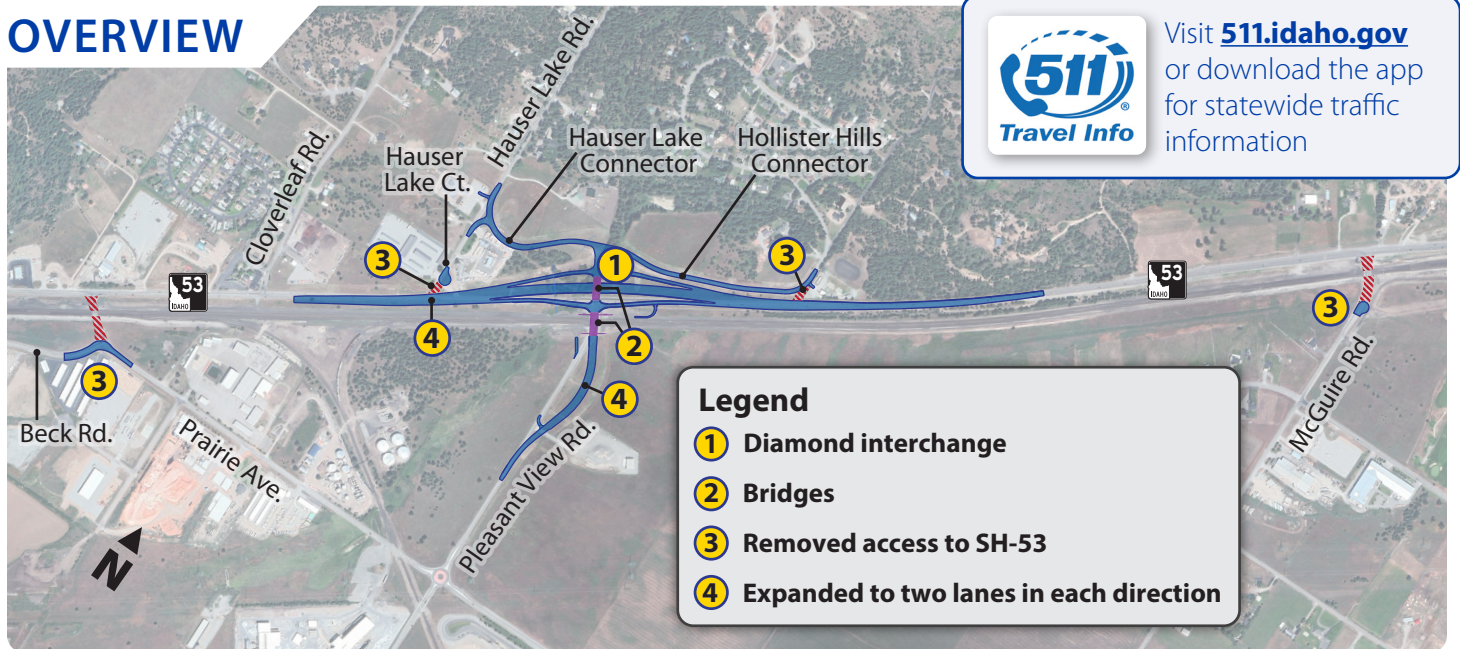




SH-53 CORRIDOR PLEASANT VIEW ROAD INTERCHANGE

OVERVIEW



The State Highway 53 (SH-53), Pleasant View Road Interchange project will enhance safety, mobility, and quality of life for local and regional users of this highly traveled and rapidly growing corridor. The project will eliminate three railroad/vehicle crossings, streamline access to SH-53, and increase capacity on key routes.

Primary improvements include:

- Constructing a diamond interchange at SH-53 and Pleasant View Road
- Expanding Pleasant View Road to two lanes in each direction through the interchange
- Removing access to SH-53 from four side roads: Hauser Lake Road, Hollister Hills Road, Prairie Avenue, and McGuire Road
- Widening SH-53 to two lanes in each direction with a new center median through the project limits

WHAT TO EXPECT

Construction is anticipated to start late summer 2024 and be completed by winter 2026. Users are asked to follow on-street signage for side-street closures, detour routes, and other construction impacts.

The following conditions can be expected throughout construction:

- Closure of Pleasant View Road north of Prairie Avenue to SH-53, with a detour via Prairie Avenue
- One lane of traffic in each direction will be predominantly maintained on SH-53
- Restricted left turns at the Beck Road and Prairie Avenue intersection
- Intermittent lane closures as needed for construction, with traffic guided by a flagger
- Impacted access to Hollister Hills Road and Hauser Lake Road for short periods
- Speeds intermittently reduced to 45 mph
- Work typically on weekdays during daylight hours

STAY INFORMED

Visit the website to sign up for updates and learn more about projects in the SH-53 corridor.

✉ info@sh53corridor.com

🌐 itdprojects.idaho.gov/pages/sh53corridor



Persons needing an interpreter or special accommodations are urged to contact 208-334-8884 or TTY/TDD users Dial 711 to use the Idaho Relay System.