

**Appendix H**  
**Resource Agency Letters and Responses**

---

## PEL Introduction Letters and Responses



**Your Safety • Your Mobility  
Your Economic Opportunity**

**IDAHO TRANSPORTATION DEPARTMENT**

P.O. Box 7129 • Boise, ID 83707-1129

(208) 334-8000 • [itd.idaho.gov](http://itd.idaho.gov)

May 2, 2024

Casey Sixkiller  
Region 10 Administrator  
Environmental Protection Agency  
1200 Sixth Avenue, Suite 155  
Seattle, Washington 98101

RE: State Highway 44 (SH-44), Interstate 84 (I-84) to Star Road Planning and Environmental Linkages (PEL) Study

Dear Casey Sixkiller:

The Idaho Transportation Department (ITD) District 3 office, in consultation with the Federal Highway Administration (FHWA), is informing you that the SH-44, I-84 to Star Road PEL Study is underway. The PEL study will be conducted in accordance with the Statewide and Metropolitan Planning Regulation 23 CFR 450, the provisions linking planning and National Environmental Policy Act (NEPA) presented in Section 450.318 and Appendix A of 23 CFR 450.

The SH-44, I-84 to Star Road PEL is being conducted to identify problem areas and evaluate transportation improvements that will improve travel safety and operations for all transportation modes in the corridor.

The study area, shown in the attached maps, contains a mix of land uses adjacent to SH-44 with residential and commercial land uses concentrated in urban areas and agricultural and lower-density residential in the remaining non-urbanized areas of the corridor. The study area consists of SH-44 from I-84 to Star Road, approximately 10 miles in total, through the cities of Middleton and Star. In addition, the study area extends approximately 50-feet from the right-of-way along the existing SH-44 alignment and a 500-foot buffer along new alignments being considered.

ITD is leading the study and has retained David Evans and Associates, Inc. (DEA) to facilitate the process and develop the PEL Study. The PEL study will examine alternatives to address safety, congestion and multimodal connectivity compared to the No Action Alternative. The PEL study will include development and screening of alternatives based on a consideration of Purpose and Need; access, traffic, planning, and environmental factors; the location of community and other developed areas, and public and agency plans and input. Coordination is being conducted with local agencies and other stakeholders in the corridor to gather available data and provide input throughout the study.

The DEA team consulted ITD during scoping to identify initial resource concerns. Your agency will be invited to review and comment on the environmental scan report, anticipated to be finished in Summer 2024. Your involvement is valuable as we proceed through the PEL study process.

Please contact me at (208-334-8344) or at ([mark.wasdahl@itd.idaho.gov](mailto:mark.wasdahl@itd.idaho.gov)) with any questions or comments you have about the project. The latest information will be posted on the project's website: <https://itdprojects.idaho.gov/pages/sh44pel>.

---



**Your Safety • Your Mobility  
Your Economic Opportunity**

**IDAHO TRANSPORTATION DEPARTMENT**

P.O. Box 7129 • Boise, ID 83707-1129

(208) 334-8000 • [itd.idaho.gov](http://itd.idaho.gov)

Please forward this information to the appropriate individual if you feel you are not the correct recipient. I look forward to your participation and thank you for your cooperation.

Sincerely

Mark Wasdahl, Project Manager

Cc: Wendy Terlizzi, ITD HQ ESM  
Jason Brinkman, ITD District 3  
Kyle Holman, FHWA  
David Witthaus, David Evans and Associates, Inc

Attachment: Vicinity and Site Maps

---

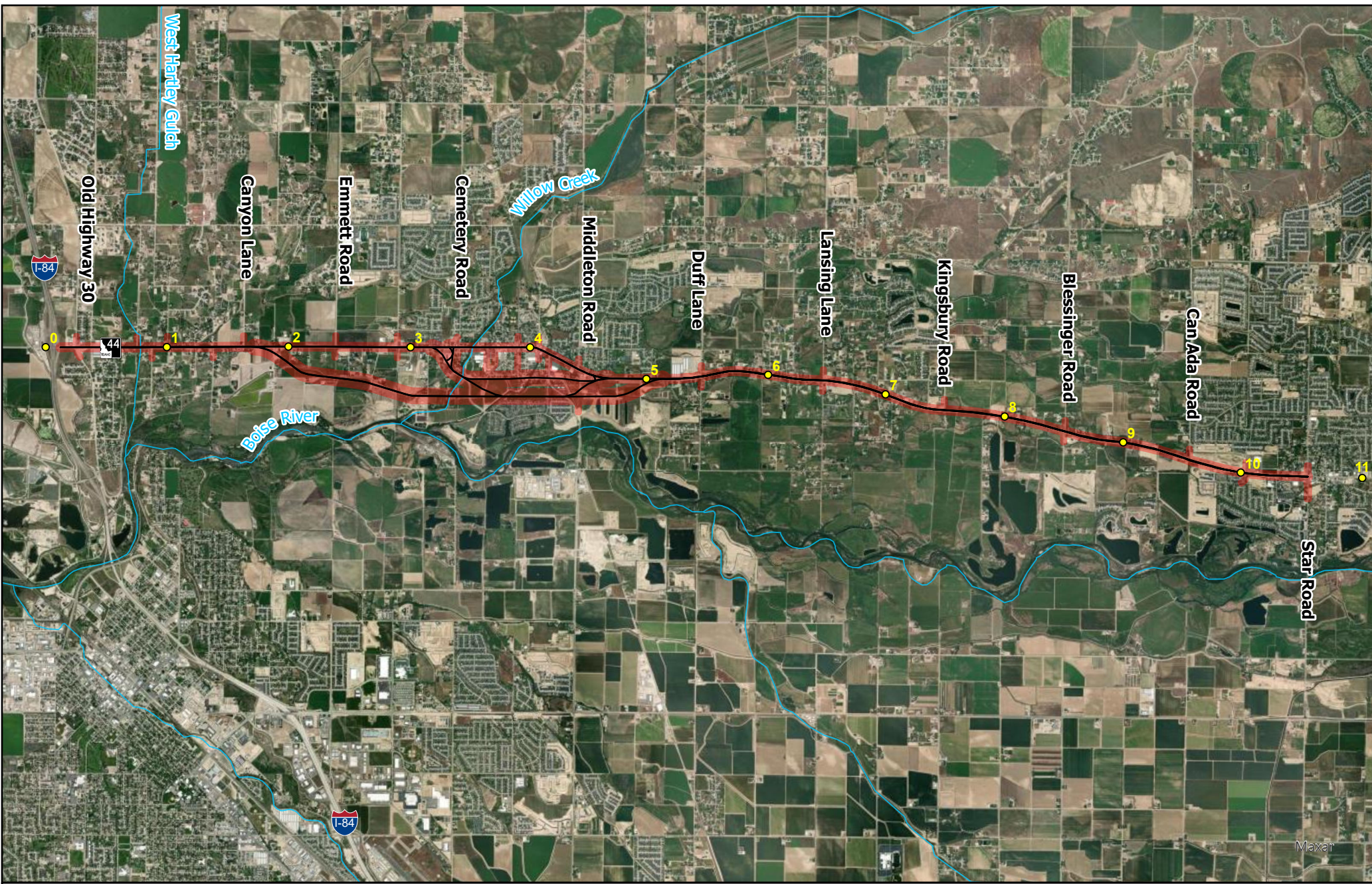
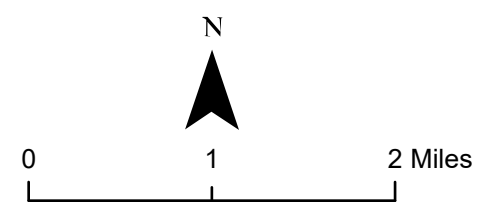


Figure 2. Site Map for SH-44, I-84 to Star Road PEL Study  
 Project No. A023(630), Key No. 23630

**Legend**

- Project Area
- Mileposts
- Alignments
- Waters



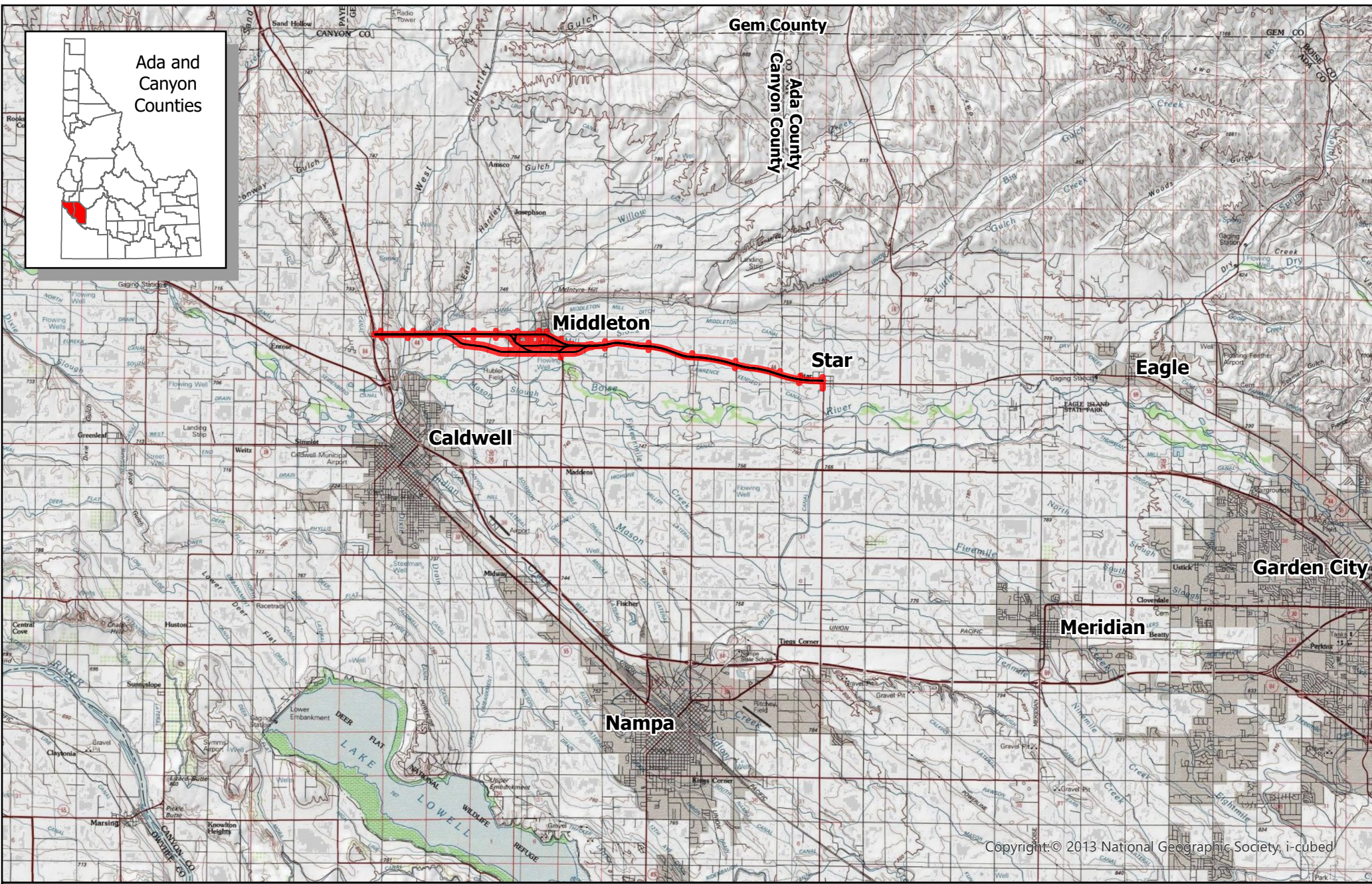
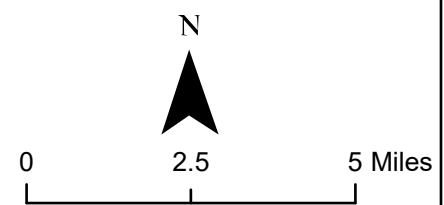


Figure 1. Vicinity Map for SH-44, I-84 to Star Road PEL Study  
 Project No. A023(630), Key No. 23630

**Legend**  
■ Project Area  
 — Alignments



Copyright © 2013 National Geographic Society, i-cubed



**Your Safety • Your Mobility  
Your Economic Opportunity**

**IDAHO TRANSPORTATION DEPARTMENT**

P.O. Box 7129 • Boise, ID 83707-1129

(208) 334-8000 • [itd.idaho.gov](http://itd.idaho.gov)

May 2, 2024

Kelly Urbanek  
Chief Regulatory Division  
U.S. Army Corps of Engineers  
720 E Park Boulevard, Suite 245  
Boise, Idaho 83712

RE: State Highway 44 (SH-44), Interstate 84 (I-84) to Star Road Planning and Environmental Linkages (PEL) Study

Dear Kelly Urbanek:

The Idaho Transportation Department (ITD) District 3 office, in consultation with the Federal Highway Administration (FHWA), is informing you that the SH-44, I-84 to Star Road PEL Study is underway. The PEL study will be conducted in accordance with the Statewide and Metropolitan Planning Regulation 23 CFR 450, the provisions linking planning and National Environmental Policy Act (NEPA) presented in Section 450.318 and Appendix A of 23 CFR 450.

The SH-44, I-84 to Star Road PEL is being conducted to identify problem areas and evaluate transportation improvements that will improve travel safety and operations for all transportation modes in the corridor.

The study area, shown in the attached maps, contains a mix of land uses adjacent to SH-44 with residential and commercial land uses concentrated in urban areas and agricultural and lower-density residential in the remaining non-urbanized areas of the corridor. The study area consists of SH-44 from I-84 to Star Road, approximately 10 miles in total, through the cities of Middleton and Star. In addition, the study area extends approximately 50-feet from the right-of-way along the existing SH-44 alignment and a 500-foot buffer along new alignments being considered.

ITD is leading the study and has retained David Evans and Associates, Inc. (DEA) to facilitate the process and develop the PEL Study. The PEL study will examine alternatives to address safety, congestion and multimodal connectivity compared to the No Action Alternative. The PEL study will include development and screening of alternatives based on a consideration of Purpose and Need; access, traffic, planning, and environmental factors; the location of community and other developed areas, and public and agency plans and input. Coordination is being conducted with local agencies and other stakeholders in the corridor to gather available data and provide input throughout the study.

The DEA team consulted ITD during scoping to identify initial resource concerns. Your agency will be invited to review and comment on the environmental scan report, anticipated to be finished in Summer 2024. Your involvement is valuable as we proceed through the PEL study process.

Please contact me at (208-334-8344) or at ([mark.wasdahl@itd.idaho.gov](mailto:mark.wasdahl@itd.idaho.gov)) with any questions or comments you have about the project. The latest information will be posted on the project's website: <https://itdprojects.idaho.gov/pages/sh44pel>.

---



**Your Safety • Your Mobility  
Your Economic Opportunity**

**IDAHO TRANSPORTATION DEPARTMENT**

P.O. Box 7129 • Boise, ID 83707-1129

(208) 334-8000 • [itd.idaho.gov](http://itd.idaho.gov)

Please forward this information to the appropriate individual if you feel you are not the correct recipient. I look forward to your participation and thank you for your cooperation.

Sincerely

Mark Wasdahl, Project Manager

Cc: Wendy Terlizzi, ITD HQ ESM  
Jason Brinkman, ITD District 3  
Kyle Holman, FHWA  
David Witthaus, David Evans and Associates, Inc

Attachment: Vicinity and Site Maps

---



**Your Safety • Your Mobility  
Your Economic Opportunity**

**IDAHO TRANSPORTATION DEPARTMENT**

P.O. Box 7129 • Boise, ID 83707-1129

(208) 334-8000 • [itd.idaho.gov](http://itd.idaho.gov)

May 2, 2024

Jacob Cordtz  
ITD Liaison/Environmental Resource Specialist  
U.S. Army Corps of Engineers  
720 E Park Boulevard, Suite 245  
Boise, Idaho 83712

RE: State Highway 44 (SH-44), Interstate 84 (I-84) to Star Road Planning and Environmental Linkages (PEL) Study

Dear Jacob Cordtz:

The Idaho Transportation Department (ITD) District 3 office, in consultation with the Federal Highway Administration (FHWA), is informing you that the SH-44, I-84 to Star Road PEL Study is underway. The PEL study will be conducted in accordance with the Statewide and Metropolitan Planning Regulation 23 CFR 450, the provisions linking planning and National Environmental Policy Act (NEPA) presented in Section 450.318 and Appendix A of 23 CFR 450.

The SH-44, I-84 to Star Road PEL is being conducted to identify problem areas and evaluate transportation improvements that will improve travel safety and operations for all transportation modes in the corridor.

The study area, shown in the attached maps, contains a mix of land uses adjacent to SH-44 with residential and commercial land uses concentrated in urban areas and agricultural and lower-density residential in the remaining non-urbanized areas of the corridor. The study area consists of SH-44 from I-84 to Star Road, approximately 10 miles in total, through the cities of Middleton and Star. In addition, the study area extends approximately 50-feet from the right-of-way along the existing SH-44 alignment and a 500-foot buffer along new alignments being considered.

ITD is leading the study and has retained David Evans and Associates, Inc. (DEA) to facilitate the process and develop the PEL Study. The PEL study will examine alternatives to address safety, congestion and multimodal connectivity compared to the No Action Alternative. The PEL study will include development and screening of alternatives based on a consideration of Purpose and Need; access, traffic, planning, and environmental factors; the location of community and other developed areas, and public and agency plans and input. Coordination is being conducted with local agencies and other stakeholders in the corridor to gather available data and provide input throughout the study.

The DEA team consulted ITD during scoping to identify initial resource concerns. Your agency will be invited to review and comment on the environmental scan report, anticipated to be finished in Summer 2024. Your involvement is valuable as we proceed through the PEL study process.

Please contact me at (208-334-8344) or at ([mark.wasdahl@itd.idaho.gov](mailto:mark.wasdahl@itd.idaho.gov)) with any questions or comments you have about the project. The latest information will be posted on the project's website: <https://itdprojects.idaho.gov/pages/sh44pel>.

---



**Your Safety • Your Mobility  
Your Economic Opportunity**

**IDAHO TRANSPORTATION DEPARTMENT**

P.O. Box 7129 • Boise, ID 83707-1129

(208) 334-8000 • [itd.idaho.gov](http://itd.idaho.gov)

Please forward this information to the appropriate individual if you feel you are not the correct recipient. I look forward to your participation and thank you for your cooperation.

Sincerely

Mark Wasdahl, Project Manager

Cc: Wendy Terlizzi, ITD HQ ESM  
Jason Brinkman, ITD District 3  
Kyle Holman, FHWA  
David Witthaus, David Evans and Associates, Inc

Attachment: Vicinity and Site Maps

---



**Your Safety • Your Mobility  
Your Economic Opportunity**

**IDAHO TRANSPORTATION DEPARTMENT**

P.O. Box 7129 • Boise, ID 83707-1129

(208) 334-8000 • [itd.idaho.gov](http://itd.idaho.gov)

May 2, 2024

Lisa Ellis  
State Supervisor  
U.S. Fish and Wildlife Service  
1387 South Vinnell Way, Suite 368  
Boise, Idaho 83709-1657

RE: State Highway 44 (SH-44), Interstate 84 (I-84) to Star Road Planning and Environmental Linkages (PEL) Study

Dear Lisa Ellis:

The Idaho Transportation Department (ITD) District 3 office, in consultation with the Federal Highway Administration (FHWA), is informing you that the SH-44, I-84 to Star Road PEL Study is underway. The PEL study will be conducted in accordance with the Statewide and Metropolitan Planning Regulation 23 CFR 450, the provisions linking planning and National Environmental Policy Act (NEPA) presented in Section 450.318 and Appendix A of 23 CFR 450.

The SH-44, I-84 to Star Road PEL is being conducted to identify problem areas and evaluate transportation improvements that will improve travel safety and operations for all transportation modes in the corridor.

The study area, shown in the attached maps, contains a mix of land uses adjacent to SH-44 with residential and commercial land uses concentrated in urban areas and agricultural and lower-density residential in the remaining non-urbanized areas of the corridor. The study area consists of SH-44 from I-84 to Star Road, approximately 10 miles in total, through the cities of Middleton and Star. In addition, the study area extends approximately 50-feet from the right-of-way along the existing SH-44 alignment and a 500-foot buffer along new alignments being considered.

ITD is leading the study and has retained David Evans and Associates, Inc. (DEA) to facilitate the process and develop the PEL Study. The PEL study will examine alternatives to address safety, congestion and multimodal connectivity compared to the No Action Alternative. The PEL study will include development and screening of alternatives based on a consideration of Purpose and Need; access, traffic, planning, and environmental factors; the location of community and other developed areas, and public and agency plans and input. Coordination is being conducted with local agencies and other stakeholders in the corridor to gather available data and provide input throughout the study.

The DEA team consulted ITD during scoping to identify initial resource concerns. Your agency will be invited to review and comment on the environmental scan report, anticipated to be finished in Summer 2024. Your involvement is valuable as we proceed through the PEL study process.

Please contact me at (208-334-8344) or at ([mark.wasdahl@itd.idaho.gov](mailto:mark.wasdahl@itd.idaho.gov)) with any questions or comments you have about the project. The latest information will be posted on the project's website: <https://itdprojects.idaho.gov/pages/sh44pel>.

---



**Your Safety • Your Mobility  
Your Economic Opportunity**

**IDAHO TRANSPORTATION DEPARTMENT**

P.O. Box 7129 • Boise, ID 83707-1129

(208) 334-8000 • [itd.idaho.gov](http://itd.idaho.gov)

Please forward this information to the appropriate individual if you feel you are not the correct recipient. I look forward to your participation and thank you for your cooperation.

Sincerely

Mark Wasdahl, Project Manager

Cc: Wendy Terlizzi, ITD HQ ESM  
Jason Brinkman, ITD District 3  
Kyle Holman, FHWA  
David Witthaus, David Evans and Associates, Inc

Attachment: Vicinity and Site Maps

---



**Your Safety • Your Mobility  
Your Economic Opportunity**

**IDAHO TRANSPORTATION DEPARTMENT**

P.O. Box 7129 • Boise, ID 83707-1129

(208) 334-8000 • [itd.idaho.gov](http://itd.idaho.gov)

May 2, 2024

Aaron Scheff  
Regional Administrator  
Idaho Department of Environmental Quality  
1445 N. Orchard St.  
Boise, ID 83706

RE: State Highway 44 (SH-44), Interstate 84 (I-84) to Star Road Planning and Environmental Linkages (PEL) Study

Dear Aaron Scheff:

The Idaho Transportation Department (ITD) District 3 office, in consultation with the Federal Highway Administration (FHWA), is informing you that the SH-44, I-84 to Star Road PEL Study is underway. The PEL study will be conducted in accordance with the Statewide and Metropolitan Planning Regulation 23 CFR 450, the provisions linking planning and National Environmental Policy Act (NEPA) presented in Section 450.318 and Appendix A of 23 CFR 450.

The SH-44, I-84 to Star Road PEL is being conducted to identify problem areas and evaluate transportation improvements that will improve travel safety and operations for all transportation modes in the corridor.

The study area, shown in the attached maps, contains a mix of land uses adjacent to SH-44 with residential and commercial land uses concentrated in urban areas and agricultural and lower-density residential in the remaining non-urbanized areas of the corridor. The study area consists of SH-44 from I-84 to Star Road, approximately 10 miles in total, through the cities of Middleton and Star. In addition, the study area extends approximately 50-feet from the right-of-way along the existing SH-44 alignment and a 500-foot buffer along new alignments being considered.

ITD is leading the study and has retained David Evans and Associates, Inc. (DEA) to facilitate the process and develop the PEL Study. The PEL study will examine alternatives to address safety, congestion and multimodal connectivity compared to the No Action Alternative. The PEL study will include development and screening of alternatives based on a consideration of Purpose and Need; access, traffic, planning, and environmental factors; the location of community and other developed areas, and public and agency plans and input. Coordination is being conducted with local agencies and other stakeholders in the corridor to gather available data and provide input throughout the study.

The DEA team consulted ITD during scoping to identify initial resource concerns. Your agency will be invited to review and comment on the environmental scan report, anticipated to be finished in Summer 2024. Your involvement is valuable as we proceed through the PEL study process.

Please contact me at (208-334-8344) or at ([mark.wasdahl@itd.idaho.gov](mailto:mark.wasdahl@itd.idaho.gov)) with any questions or comments you have about the project. The latest information will be posted on the project's website: <https://itdprojects.idaho.gov/pages/sh44pel>.

---



**Your Safety • Your Mobility  
Your Economic Opportunity**

**IDAHO TRANSPORTATION DEPARTMENT**

P.O. Box 7129 • Boise, ID 83707-1129

(208) 334-8000 • [itd.idaho.gov](http://itd.idaho.gov)

Please forward this information to the appropriate individual if you feel you are not the correct recipient. I look forward to your participation and thank you for your cooperation.

Sincerely

Mark Wasdahl, Project Manager

Cc: Wendy Terlizzi, ITD HQ ESM  
Jason Brinkman, ITD District 3  
Kyle Holman, FHWA  
David Witthaus, David Evans and Associates, Inc

Attachment: Vicinity and Site Maps

---



**Your Safety • Your Mobility  
Your Economic Opportunity**

**IDAHO TRANSPORTATION DEPARTMENT**

P.O. Box 7129 • Boise, ID 83707-1129

(208) 334-8000 • [itd.idaho.gov](http://itd.idaho.gov)

May 2, 2024

Aaron Golart  
State Coordinator Stream Protection Program  
Idaho Department of Water Resources  
322 E Front St STE 648  
Po Box 83720  
Boise ID 83720-0098

RE: State Highway 44 (SH-44), Interstate 84 (I-84) to Star Road Planning and Environmental Linkages (PEL) Study

Dear Aaron Golart:

The Idaho Transportation Department (ITD) District 3 office, in consultation with the Federal Highway Administration (FHWA), is informing you that the SH-44, I-84 to Star Road PEL Study is underway. The PEL study will be conducted in accordance with the Statewide and Metropolitan Planning Regulation 23 CFR 450, the provisions linking planning and National Environmental Policy Act (NEPA) presented in Section 450.318 and Appendix A of 23 CFR 450.

The SH-44, I-84 to Star Road PEL is being conducted to identify problem areas and evaluate transportation improvements that will improve travel safety and operations for all transportation modes in the corridor.

The study area, shown in the attached maps, contains a mix of land uses adjacent to SH-44 with residential and commercial land uses concentrated in urban areas and agricultural and lower-density residential in the remaining non-urbanized areas of the corridor. The study area consists of SH-44 from I-84 to Star Road, approximately 10 miles in total, through the cities of Middleton and Star. In addition, the study area extends approximately 50-feet from the right-of-way along the existing SH-44 alignment and a 500-foot buffer along new alignments being considered.

ITD is leading the study and has retained David Evans and Associates, Inc. (DEA) to facilitate the process and develop the PEL Study. The PEL study will examine alternatives to address safety, congestion and multimodal connectivity compared to the No Action Alternative. The PEL study will include development and screening of alternatives based on a consideration of Purpose and Need; access, traffic, planning, and environmental factors; the location of community and other developed areas, and public and agency plans and input. Coordination is being conducted with local agencies and other stakeholders in the corridor to gather available data and provide input throughout the study.

The DEA team consulted ITD during scoping to identify initial resource concerns. Your agency will be invited to review and comment on the environmental scan report, anticipated to be finished in Summer 2024. Your involvement is valuable as we proceed through the PEL study process.

Please contact me at (208-334-8344) or at ([mark.wasdahl@itd.idaho.gov](mailto:mark.wasdahl@itd.idaho.gov)) with any questions or comments you have about the project. The latest information will be posted on the project's website: <https://itdprojects.idaho.gov/pages/sh44pel>.

---



**Your Safety • Your Mobility  
Your Economic Opportunity**

**IDAHO TRANSPORTATION DEPARTMENT**

P.O. Box 7129 • Boise, ID 83707-1129

(208) 334-8000 • [itd.idaho.gov](http://itd.idaho.gov)

Please forward this information to the appropriate individual if you feel you are not the correct recipient. I look forward to your participation and thank you for your cooperation.

Sincerely

Mark Wasdahl, Project Manager

Cc: Wendy Terlizzi, ITD HQ ESM  
Jason Brinkman, ITD District 3  
Kyle Holman, FHWA  
David Witthaus, David Evans and Associates, Inc

Attachment: Vicinity and Site Maps

---



**Your Safety • Your Mobility  
Your Economic Opportunity**

**IDAHO TRANSPORTATION DEPARTMENT**

P.O. Box 7129 • Boise, ID 83707-1129

(208) 334-8000 • [itd.idaho.gov](http://itd.idaho.gov)

Please forward this information to the appropriate individual if you feel you are not the correct recipient. I look forward to your participation and thank you for your cooperation.

Sincerely

Mark Wasdahl, Project Manager

Cc: Wendy Terlizzi, ITD HQ ESM  
Jason Brinkman, ITD District 3  
Kyle Holman, FHWA  
David Witthaus, David Evans and Associates, Inc

Attachment: Vicinity and Site Maps





**Your Safety • Your Mobility  
Your Economic Opportunity**

**IDAHO TRANSPORTATION DEPARTMENT**

P.O. Box 7129 • Boise, ID 83707-1129

(208) 334-8000 • [itd.idaho.gov](http://itd.idaho.gov)

May 2, 2024

Lanie Paquin  
Area Manager  
Bureau of Reclamation  
230 Collins Road  
Boise, Idaho 83702

RE: State Highway 44 (SH-44), Interstate 84 (I-84) to Star Road Planning and Environmental Linkages (PEL) Study

Dear Lanie Paquin:

The Idaho Transportation Department (ITD) District 3 office, in consultation with the Federal Highway Administration (FHWA), is informing you that the SH-44, I-84 to Star Road PEL Study is underway. The PEL study will be conducted in accordance with the Statewide and Metropolitan Planning Regulation 23 CFR 450, the provisions linking planning and National Environmental Policy Act (NEPA) presented in Section 450.318 and Appendix A of 23 CFR 450.

The SH-44, I-84 to Star Road PEL is being conducted to identify problem areas and evaluate transportation improvements that will improve travel safety and operations for all transportation modes in the corridor.

The study area, shown in the attached maps, contains a mix of land uses adjacent to SH-44 with residential and commercial land uses concentrated in urban areas and agricultural and lower-density residential in the remaining non-urbanized areas of the corridor. The study area consists of SH-44 from I-84 to Star Road, approximately 10 miles in total, through the cities of Middleton and Star. In addition, the study area extends approximately 50-feet from the right-of-way along the existing SH-44 alignment and a 500-foot buffer along new alignments being considered.

ITD is leading the study and has retained David Evans and Associates, Inc. (DEA) to facilitate the process and develop the PEL Study. The PEL study will examine alternatives to address safety, congestion and multimodal connectivity compared to the No Action Alternative. The PEL study will include development and screening of alternatives based on a consideration of Purpose and Need; access, traffic, planning, and environmental factors; the location of community and other developed areas, and public and agency plans and input. Coordination is being conducted with local agencies and other stakeholders in the corridor to gather available data and provide input throughout the study.

The DEA team consulted ITD during scoping to identify initial resource concerns. Your agency will be invited to review and comment on the environmental scan report, anticipated to be finished in Summer 2024. Your involvement is valuable as we proceed through the PEL study process.

Please contact me at (208-334-8344) or at ([mark.wasdahl@itd.idaho.gov](mailto:mark.wasdahl@itd.idaho.gov)) with any questions or comments you have about the project. The latest information will be posted on the project's website: <https://itdprojects.idaho.gov/pages/sh44pel>.

---



**Your Safety • Your Mobility  
Your Economic Opportunity**

**IDAHO TRANSPORTATION DEPARTMENT**

P.O. Box 7129 • Boise, ID 83707-1129

(208) 334-8000 • [itd.idaho.gov](http://itd.idaho.gov)

Please forward this information to the appropriate individual if you feel you are not the correct recipient. I look forward to your participation and thank you for your cooperation.

Sincerely

Mark Wasdahl, Project Manager

Cc: Wendy Terlizzi, ITD HQ ESM  
Jason Brinkman, ITD District 3  
Kyle Holman, FHWA  
David Witthaus, David Evans and Associates, Inc

Attachment: Vicinity and Site Maps

---



**Your Safety • Your Mobility  
Your Economic Opportunity**

**IDAHO TRANSPORTATION DEPARTMENT**

P.O. Box 7129 • Boise, ID 83707-1129

(208) 334-8000 • [itd.idaho.gov](http://itd.idaho.gov)

May 2, 2024

Bruce Sandoval  
Acting State Conservationist  
Natural Resources Conservation Service  
9173 W. Barnes Drive, Ste C  
Boise, ID 83709

RE: State Highway 44 (SH-44), Interstate 84 (I-84) to Star Road Planning and Environmental Linkages (PEL) Study

Dear Bruce Sandoval:

The Idaho Transportation Department (ITD) District 3 office, in consultation with the Federal Highway Administration (FHWA), is informing you that the SH-44, I-84 to Star Road PEL Study is underway. The PEL study will be conducted in accordance with the Statewide and Metropolitan Planning Regulation 23 CFR 450, the provisions linking planning and National Environmental Policy Act (NEPA) presented in Section 450.318 and Appendix A of 23 CFR 450.

The SH-44, I-84 to Star Road PEL is being conducted to identify problem areas and evaluate transportation improvements that will improve travel safety and operations for all transportation modes in the corridor.

The study area, shown in the attached maps, contains a mix of land uses adjacent to SH-44 with residential and commercial land uses concentrated in urban areas and agricultural and lower-density residential in the remaining non-urbanized areas of the corridor. The study area consists of SH-44 from I-84 to Star Road, approximately 10 miles in total, through the cities of Middleton and Star. In addition, the study area extends approximately 50-feet from the right-of-way along the existing SH-44 alignment and a 500-foot buffer along new alignments being considered.

ITD is leading the study and has retained David Evans and Associates, Inc. (DEA) to facilitate the process and develop the PEL Study. The PEL study will examine alternatives to address safety, congestion and multimodal connectivity compared to the No Action Alternative. The PEL study will include development and screening of alternatives based on a consideration of Purpose and Need; access, traffic, planning, and environmental factors; the location of community and other developed areas, and public and agency plans and input. Coordination is being conducted with local agencies and other stakeholders in the corridor to gather available data and provide input throughout the study.

The DEA team consulted ITD during scoping to identify initial resource concerns. Your agency will be invited to review and comment on the environmental scan report, anticipated to be finished in Summer 2024. Your involvement is valuable as we proceed through the PEL study process.

Please contact me at (208-334-8344) or at ([mark.wasdahl@itd.idaho.gov](mailto:mark.wasdahl@itd.idaho.gov)) with any questions or comments you have about the project. The latest information will be posted on the project's website: <https://itdprojects.idaho.gov/pages/sh44pel>.

---



**Your Safety • Your Mobility  
Your Economic Opportunity**

**IDAHO TRANSPORTATION DEPARTMENT**

P.O. Box 7129 • Boise, ID 83707-1129

(208) 334-8000 • [itd.idaho.gov](http://itd.idaho.gov)

Please forward this information to the appropriate individual if you feel you are not the correct recipient. I look forward to your participation and thank you for your cooperation.

Sincerely

Mark Wasdahl, Project Manager

Cc: Wendy Terlizzi, ITD HQ ESM  
Jason Brinkman, ITD District 3  
Kyle Holman, FHWA  
David Witthaus, David Evans and Associates, Inc

Attachment: Vicinity and Site Maps

---



**Your Safety • Your Mobility  
Your Economic Opportunity**

**IDAHO TRANSPORTATION DEPARTMENT**

P.O. Box 7129 • Boise, ID 83707-1129

(208) 334-8000 • [itd.idaho.gov](http://itd.idaho.gov)

May 2, 2024

Dean Johnson  
Area Manager  
Idaho Department of Lands  
8355 W. State St.  
Boise, ID 83714

RE: State Highway 44 (SH-44), Interstate 84 (I-84) to Star Road Planning and Environmental Linkages (PEL) Study

Dear Dean Johnson:

The Idaho Transportation Department (ITD) District 3 office, in consultation with the Federal Highway Administration (FHWA), is informing you that the SH-44, I-84 to Star Road PEL Study is underway. The PEL study will be conducted in accordance with the Statewide and Metropolitan Planning Regulation 23 CFR 450, the provisions linking planning and National Environmental Policy Act (NEPA) presented in Section 450.318 and Appendix A of 23 CFR 450.

The SH-44, I-84 to Star Road PEL is being conducted to identify problem areas and evaluate transportation improvements that will improve travel safety and operations for all transportation modes in the corridor.

The study area, shown in the attached maps, contains a mix of land uses adjacent to SH-44 with residential and commercial land uses concentrated in urban areas and agricultural and lower-density residential in the remaining non-urbanized areas of the corridor. The study area consists of SH-44 from I-84 to Star Road, approximately 10 miles in total, through the cities of Middleton and Star. In addition, the study area extends approximately 50-feet from the right-of-way along the existing SH-44 alignment and a 500-foot buffer along new alignments being considered.

ITD is leading the study and has retained David Evans and Associates, Inc. (DEA) to facilitate the process and develop the PEL Study. The PEL study will examine alternatives to address safety, congestion and multimodal connectivity compared to the No Action Alternative. The PEL study will include development and screening of alternatives based on a consideration of Purpose and Need; access, traffic, planning, and environmental factors; the location of community and other developed areas, and public and agency plans and input. Coordination is being conducted with local agencies and other stakeholders in the corridor to gather available data and provide input throughout the study.

The DEA team consulted ITD during scoping to identify initial resource concerns. Your agency will be invited to review and comment on the environmental scan report, anticipated to be finished in Summer 2024. Your involvement is valuable as we proceed through the PEL study process.

Please contact me at (208-334-8344) or at ([mark.wasdahl@itd.idaho.gov](mailto:mark.wasdahl@itd.idaho.gov)) with any questions or comments you have about the project. The latest information will be posted on the project's website: <https://itdprojects.idaho.gov/pages/sh44pel>.

---



**Your Safety • Your Mobility  
Your Economic Opportunity**

**IDAHO TRANSPORTATION DEPARTMENT**

P.O. Box 7129 • Boise, ID 83707-1129

(208) 334-8000 • [itd.idaho.gov](http://itd.idaho.gov)

Please forward this information to the appropriate individual if you feel you are not the correct recipient. I look forward to your participation and thank you for your cooperation.

Sincerely

Mark Wasdahl, Project Manager

Cc: Wendy Terlizzi, ITD HQ ESM  
Jason Brinkman, ITD District 3  
Kyle Holman, FHWA  
David Witthaus, David Evans and Associates, Inc

Attachment: Vicinity and Site Maps

---



**Your Safety • Your Mobility  
Your Economic Opportunity**

**IDAHO TRANSPORTATION DEPARTMENT**

P.O. Box 7129 • Boise, ID 83707-1129

(208) 334-8000 • [itd.idaho.gov](http://itd.idaho.gov)

May 2, 2024

Nikole Zogg  
Director  
Southwest District Health  
13307 Miami Lane  
Caldwell, ID 83607

RE: State Highway 44 (SH-44), Interstate 84 (I-84) to Star Road Planning and Environmental Linkages (PEL) Study

Dear Nikole Zogg:

The Idaho Transportation Department (ITD) District 3 office, in consultation with the Federal Highway Administration (FHWA), is informing you that the SH-44, I-84 to Star Road PEL Study is underway. The PEL study will be conducted in accordance with the Statewide and Metropolitan Planning Regulation 23 CFR 450, the provisions linking planning and National Environmental Policy Act (NEPA) presented in Section 450.318 and Appendix A of 23 CFR 450.

The SH-44, I-84 to Star Road PEL is being conducted to identify problem areas and evaluate transportation improvements that will improve travel safety and operations for all transportation modes in the corridor.

The study area, shown in the attached maps, contains a mix of land uses adjacent to SH-44 with residential and commercial land uses concentrated in urban areas and agricultural and lower-density residential in the remaining non-urbanized areas of the corridor. The study area consists of SH-44 from I-84 to Star Road, approximately 10 miles in total, through the cities of Middleton and Star. In addition, the study area extends approximately 50-feet from the right-of-way along the existing SH-44 alignment and a 500-foot buffer along new alignments being considered.

ITD is leading the study and has retained David Evans and Associates, Inc. (DEA) to facilitate the process and develop the PEL Study. The PEL study will examine alternatives to address safety, congestion and multimodal connectivity compared to the No Action Alternative. The PEL study will include development and screening of alternatives based on a consideration of Purpose and Need; access, traffic, planning, and environmental factors; the location of community and other developed areas, and public and agency plans and input. Coordination is being conducted with local agencies and other stakeholders in the corridor to gather available data and provide input throughout the study.

The DEA team consulted ITD during scoping to identify initial resource concerns. Your agency will be invited to review and comment on the environmental scan report, anticipated to be finished in Summer 2024. Your involvement is valuable as we proceed through the PEL study process.

Please contact me at (208-334-8344) or at ([mark.wasdahl@itd.idaho.gov](mailto:mark.wasdahl@itd.idaho.gov)) with any questions or comments you have about the project. The latest information will be posted on the project's website: <https://itdprojects.idaho.gov/pages/sh44pel>.

---



**Your Safety • Your Mobility  
Your Economic Opportunity**

**IDAHO TRANSPORTATION DEPARTMENT**

P.O. Box 7129 • Boise, ID 83707-1129

(208) 334-8000 • [itd.idaho.gov](http://itd.idaho.gov)

Please forward this information to the appropriate individual if you feel you are not the correct recipient. I look forward to your participation and thank you for your cooperation.

Sincerely

Mark Wasdahl, Project Manager

Cc: Wendy Terlizzi, ITD HQ ESM  
Jason Brinkman, ITD District 3  
Kyle Holman, FHWA  
David Witthaus, David Evans and Associates, Inc

Attachment: Vicinity and Site Maps

---



**Your Safety • Your Mobility  
Your Economic Opportunity**

**IDAHO TRANSPORTATION DEPARTMENT**

P.O. Box 7129 • Boise, ID 83707-1129

(208) 334-8000 • [itd.idaho.gov](http://itd.idaho.gov)

May 2, 2024

Russell A. Duke  
Director  
Central District Health  
707 North Armstrong Place  
Boise, ID 83704-0825

RE: State Highway 44 (SH-44), Interstate 84 (I-84) to Star Road Planning and Environmental Linkages (PEL) Study

Dear Russell A. Duke:

The Idaho Transportation Department (ITD) District 3 office, in consultation with the Federal Highway Administration (FHWA), is informing you that the SH-44, I-84 to Star Road PEL Study is underway. The PEL study will be conducted in accordance with the Statewide and Metropolitan Planning Regulation 23 CFR 450, the provisions linking planning and National Environmental Policy Act (NEPA) presented in Section 450.318 and Appendix A of 23 CFR 450.

The SH-44, I-84 to Star Road PEL is being conducted to identify problem areas and evaluate transportation improvements that will improve travel safety and operations for all transportation modes in the corridor.

The study area, shown in the attached maps, contains a mix of land uses adjacent to SH-44 with residential and commercial land uses concentrated in urban areas and agricultural and lower-density residential in the remaining non-urbanized areas of the corridor. The study area consists of SH-44 from I-84 to Star Road, approximately 10 miles in total, through the cities of Middleton and Star. In addition, the study area extends approximately 50-feet from the right-of-way along the existing SH-44 alignment and a 500-foot buffer along new alignments being considered.

ITD is leading the study and has retained David Evans and Associates, Inc. (DEA) to facilitate the process and develop the PEL Study. The PEL study will examine alternatives to address safety, congestion and multimodal connectivity compared to the No Action Alternative. The PEL study will include development and screening of alternatives based on a consideration of Purpose and Need; access, traffic, planning, and environmental factors; the location of community and other developed areas, and public and agency plans and input. Coordination is being conducted with local agencies and other stakeholders in the corridor to gather available data and provide input throughout the study.

The DEA team consulted ITD during scoping to identify initial resource concerns. Your agency will be invited to review and comment on the environmental scan report, anticipated to be finished in Summer 2024. Your involvement is valuable as we proceed through the PEL study process.

Please contact me at (208-334-8344) or at ([mark.wasdahl@itd.idaho.gov](mailto:mark.wasdahl@itd.idaho.gov)) with any questions or comments you have about the project. The latest information will be posted on the project's website: <https://itdprojects.idaho.gov/pages/sh44pel>.

---



**Your Safety • Your Mobility  
Your Economic Opportunity**

**IDAHO TRANSPORTATION DEPARTMENT**

P.O. Box 7129 • Boise, ID 83707-1129

(208) 334-8000 • [itd.idaho.gov](http://itd.idaho.gov)

Please forward this information to the appropriate individual if you feel you are not the correct recipient. I look forward to your participation and thank you for your cooperation.

Sincerely

Mark Wasdahl, Project Manager

Cc: Wendy Terlizzi, ITD HQ ESM  
Jason Brinkman, ITD District 3  
Kyle Holman, FHWA  
David Witthaus, David Evans and Associates, Inc

Attachment: Vicinity and Site Maps

---



**Your Safety • Your Mobility  
Your Economic Opportunity**

**IDAHO TRANSPORTATION DEPARTMENT**

P.O. Box 7129 • Boise, ID 83707-1129

(208) 334-8000 • [itd.idaho.gov](http://itd.idaho.gov)

May 2, 2024

Rob Oates  
Airport Manager  
Caldwell Executive Airport  
P.O. Box 1179  
Caldwell, ID 83606

RE: State Highway 44 (SH-44), Interstate 84 (I-84) to Star Road Planning and Environmental Linkages (PEL) Study

Dear Rob Oates:

The Idaho Transportation Department (ITD) District 3 office, in consultation with the Federal Highway Administration (FHWA), is informing you that the SH-44, I-84 to Star Road PEL Study is underway. The PEL study will be conducted in accordance with the Statewide and Metropolitan Planning Regulation 23 CFR 450, the provisions linking planning and National Environmental Policy Act (NEPA) presented in Section 450.318 and Appendix A of 23 CFR 450.

The SH-44, I-84 to Star Road PEL is being conducted to identify problem areas and evaluate transportation improvements that will improve travel safety and operations for all transportation modes in the corridor.

The study area, shown in the attached maps, contains a mix of land uses adjacent to SH-44 with residential and commercial land uses concentrated in urban areas and agricultural and lower-density residential in the remaining non-urbanized areas of the corridor. The study area consists of SH-44 from I-84 to Star Road, approximately 10 miles in total, through the cities of Middleton and Star. In addition, the study area extends approximately 50-feet from the right-of-way along the existing SH-44 alignment and a 500-foot buffer along new alignments being considered.

ITD is leading the study and has retained David Evans and Associates, Inc. (DEA) to facilitate the process and develop the PEL Study. The PEL study will examine alternatives to address safety, congestion and multimodal connectivity compared to the No Action Alternative. The PEL study will include development and screening of alternatives based on a consideration of Purpose and Need; access, traffic, planning, and environmental factors; the location of community and other developed areas, and public and agency plans and input. Coordination is being conducted with local agencies and other stakeholders in the corridor to gather available data and provide input throughout the study.

The DEA team consulted ITD during scoping to identify initial resource concerns. Your agency will be invited to review and comment on the environmental scan report, anticipated to be finished in Summer 2024. Your involvement is valuable as we proceed through the PEL study process.

Please contact me at (208-334-8344) or at ([mark.wasdahl@itd.idaho.gov](mailto:mark.wasdahl@itd.idaho.gov)) with any questions or comments you have about the project. The latest information will be posted on the project's website: <https://itdprojects.idaho.gov/pages/sh44pel>.

---



**Your Safety • Your Mobility  
Your Economic Opportunity**

**IDAHO TRANSPORTATION DEPARTMENT**

P.O. Box 7129 • Boise, ID 83707-1129

(208) 334-8000 • [itd.idaho.gov](http://itd.idaho.gov)

Please forward this information to the appropriate individual if you feel you are not the correct recipient. I look forward to your participation and thank you for your cooperation.

Sincerely

Mark Wasdahl, Project Manager

Cc: Wendy Terlizzi, ITD HQ ESM  
Jason Brinkman, ITD District 3  
Kyle Holman, FHWA  
David Witthaus, David Evans and Associates, Inc

Attachment: Vicinity and Site Maps

---



**Your Safety • Your Mobility  
Your Economic Opportunity**

**IDAHO TRANSPORTATION DEPARTMENT**

P.O. Box 7129 • Boise, ID 83707-1129

(208) 334-8000 • [itd.idaho.gov](http://itd.idaho.gov)

May 2, 2024

Heidy Bruner  
Environmental Specialist (ID/MT)  
Federal Aviation Administration  
2725 Skyway Dr, Ste 2  
Helena, MT 59602-1205

RE: State Highway 44 (SH-44), Interstate 84 (I-84) to Star Road Planning and Environmental Linkages (PEL) Study

Dear Heidy Bruner:

The Idaho Transportation Department (ITD) District 3 office, in consultation with the Federal Highway Administration (FHWA), is informing you that the SH-44, I-84 to Star Road PEL Study is underway. The PEL study will be conducted in accordance with the Statewide and Metropolitan Planning Regulation 23 CFR 450, the provisions linking planning and National Environmental Policy Act (NEPA) presented in Section 450.318 and Appendix A of 23 CFR 450.

The SH-44, I-84 to Star Road PEL is being conducted to identify problem areas and evaluate transportation improvements that will improve travel safety and operations for all transportation modes in the corridor.

The study area, shown in the attached maps, contains a mix of land uses adjacent to SH-44 with residential and commercial land uses concentrated in urban areas and agricultural and lower-density residential in the remaining non-urbanized areas of the corridor. The study area consists of SH-44 from I-84 to Star Road, approximately 10 miles in total, through the cities of Middleton and Star. In addition, the study area extends approximately 50-feet from the right-of-way along the existing SH-44 alignment and a 500-foot buffer along new alignments being considered.

ITD is leading the study and has retained David Evans and Associates, Inc. (DEA) to facilitate the process and develop the PEL Study. The PEL study will examine alternatives to address safety, congestion and multimodal connectivity compared to the No Action Alternative. The PEL study will include development and screening of alternatives based on a consideration of Purpose and Need; access, traffic, planning, and environmental factors; the location of community and other developed areas, and public and agency plans and input. Coordination is being conducted with local agencies and other stakeholders in the corridor to gather available data and provide input throughout the study.

The DEA team consulted ITD during scoping to identify initial resource concerns. Your agency will be invited to review and comment on the environmental scan report, anticipated to be finished in Summer 2024. Your involvement is valuable as we proceed through the PEL study process.

Please contact me at (208-334-8344) or at ([mark.wasdahl@itd.idaho.gov](mailto:mark.wasdahl@itd.idaho.gov)) with any questions or comments you have about the project. The latest information will be posted on the project's website: <https://itdprojects.idaho.gov/pages/sh44pel>.

---



**Your Safety • Your Mobility  
Your Economic Opportunity**

**IDAHO TRANSPORTATION DEPARTMENT**

P.O. Box 7129 • Boise, ID 83707-1129

(208) 334-8000 • [itd.idaho.gov](http://itd.idaho.gov)

Please forward this information to the appropriate individual if you feel you are not the correct recipient. I look forward to your participation and thank you for your cooperation.

Sincerely

Mark Wasdahl, Project Manager

Cc: Wendy Terlizzi, ITD HQ ESM  
Jason Brinkman, ITD District 3  
Kyle Holman, FHWA  
David Witthaus, David Evans and Associates, Inc

Attachment: Vicinity and Site Maps

---



**Your Safety • Your Mobility  
Your Economic Opportunity**

**IDAHO TRANSPORTATION DEPARTMENT**

P.O. Box 7129 • Boise, ID 83707-1129

(208) 334-8000 • [itd.idaho.gov](http://itd.idaho.gov)

May 2, 2024

Susan Buxton  
Director  
Idaho Department of Parks and Recreation  
5657 Warm Springs Avenue  
Boise, ID 83716

RE: State Highway 44 (SH-44), Interstate 84 (I-84) to Star Road Planning and Environmental Linkages (PEL) Study

Dear Susan Buxton:

The Idaho Transportation Department (ITD) District 3 office, in consultation with the Federal Highway Administration (FHWA), is informing you that the SH-44, I-84 to Star Road PEL Study is underway. The PEL study will be conducted in accordance with the Statewide and Metropolitan Planning Regulation 23 CFR 450, the provisions linking planning and National Environmental Policy Act (NEPA) presented in Section 450.318 and Appendix A of 23 CFR 450.

The SH-44, I-84 to Star Road PEL is being conducted to identify problem areas and evaluate transportation improvements that will improve travel safety and operations for all transportation modes in the corridor.

The study area, shown in the attached maps, contains a mix of land uses adjacent to SH-44 with residential and commercial land uses concentrated in urban areas and agricultural and lower-density residential in the remaining non-urbanized areas of the corridor. The study area consists of SH-44 from I-84 to Star Road, approximately 10 miles in total, through the cities of Middleton and Star. In addition, the study area extends approximately 50-feet from the right-of-way along the existing SH-44 alignment and a 500-foot buffer along new alignments being considered.

ITD is leading the study and has retained David Evans and Associates, Inc. (DEA) to facilitate the process and develop the PEL Study. The PEL study will examine alternatives to address safety, congestion and multimodal connectivity compared to the No Action Alternative. The PEL study will include development and screening of alternatives based on a consideration of Purpose and Need; access, traffic, planning, and environmental factors; the location of community and other developed areas, and public and agency plans and input. Coordination is being conducted with local agencies and other stakeholders in the corridor to gather available data and provide input throughout the study.

The DEA team consulted ITD during scoping to identify initial resource concerns. Your agency will be invited to review and comment on the environmental scan report, anticipated to be finished in Summer 2024. Your involvement is valuable as we proceed through the PEL study process.

Please contact me at (208-334-8344) or at ([mark.wasdahl@itd.idaho.gov](mailto:mark.wasdahl@itd.idaho.gov)) with any questions or comments you have about the project. The latest information will be posted on the project's website: <https://itdprojects.idaho.gov/pages/sh44pel>.

---



**Your Safety • Your Mobility  
Your Economic Opportunity**

**IDAHO TRANSPORTATION DEPARTMENT**

P.O. Box 7129 • Boise, ID 83707-1129

(208) 334-8000 • [itd.idaho.gov](http://itd.idaho.gov)

Please forward this information to the appropriate individual if you feel you are not the correct recipient. I look forward to your participation and thank you for your cooperation.

Sincerely

Mark Wasdahl, Project Manager

Cc: Wendy Terlizzi, ITD HQ ESM  
Jason Brinkman, ITD District 3  
Kyle Holman, FHWA  
David Witthaus, David Evans and Associates, Inc

Attachment: Vicinity and Site Maps

---

## Nicole Parks

---

**To:** Mark Wasdahl  
**Subject:** RE: State Highway 44 (SH-44), Interstate 84 (I-84) to Star Road PEL

---

**From:** Bruner, Heidi S (FAA) <[Heidy.S.Bruner@faa.gov](mailto:Heidy.S.Bruner@faa.gov)>  
**Sent:** May 22, 2024 1:24 PM  
**To:** Mark Wasdahl <[Mark.Wasdahl@itd.idaho.gov](mailto:Mark.Wasdahl@itd.idaho.gov)>  
**Cc:** Jennifer Schildgen <[Jennifer.Schildgen@itd.idaho.gov](mailto:Jennifer.Schildgen@itd.idaho.gov)>; Holman, Kyle (FHWA) <[kyle.holman@dot.gov](mailto:kyle.holman@dot.gov)>  
**Subject:** State Highway 44 (SH-44), Interstate 84 (I-84) to Star Road PEL

**CAUTION: This email originated outside the State of Idaho network. Verify links and attachments BEFORE you click or open, even if you recognize and/or trust the sender. Contact your agency service desk with any concerns.**

---

Dear Mark Wasdahl,

Thank you for your May 9, 2024, letter regarding the subject federally funded ITD highway study.

In this case, the proposed study area is not in close proximity to airports that are included in the National Plan of Integrated Airport Systems (NPIAS). As a result, our FAA office has no comments or questions at this time.

We do appreciate your notification and will look forward to future collaboration if opportunities arise. If you have any questions, please call me at 406.441.5221. I will be pleased to assist you.

Sincerely,

Heidy Bruner, P.E. (she/her) | Environmental Protection Specialist (Idaho)  
Federal Aviation Administration  
Helena Airports District Office  
FAA Northwest Mountain Region Airports Division  
406.441.5221

## Nicole Parks

---

**To:** David Witthaus  
**Subject:** RE: IDWR Contact - SH-44 PEL

---

**From:** Mark Wasdahl <[Mark.Wasdahl@itd.idaho.gov](mailto:Mark.Wasdahl@itd.idaho.gov)>  
**Sent:** Wednesday, May 15, 2024 5:03 PM  
**To:** Greg Vitley <[Greg.Vitley@itd.idaho.gov](mailto:Greg.Vitley@itd.idaho.gov)>; David Witthaus <[David.Witthaus@deainc.com](mailto:David.Witthaus@deainc.com)>  
**Subject:** FW: IDWR Contact - SH-44 PEL

FYI,

*Mark Wasdahl*

Senior Planner  
Idaho Transportation Department, District 3  
Business: (208) 334-8344

---

**From:** Gibble, Katie <[Katie.Gibble@idwr.idaho.gov](mailto:Katie.Gibble@idwr.idaho.gov)>  
**Sent:** May 15, 2024 3:46 PM  
**To:** Mark Wasdahl <[Mark.Wasdahl@itd.idaho.gov](mailto:Mark.Wasdahl@itd.idaho.gov)>  
**Cc:** Golart, Aaron <[Aaron.Golart@idwr.idaho.gov](mailto:Aaron.Golart@idwr.idaho.gov)>  
**Subject:** IDWR Contact - SH-44 PEL

Greetings Mark,

IDWR received the SH-44 / I-84 to Star Road PEL Study letter, sent May 9<sup>th</sup>. When the environmental scan report is complete, please submit the report to me at this email address – I will be the lead on this matter for IDWR.

Best,  
Katie



**Katie Gibble**  
*Stream Channel Protection Specialist*  
**Idaho Dept. of Water Resources**  
[katie.gibble@idwr.idaho.gov](mailto:katie.gibble@idwr.idaho.gov)  
(208) 287-4823

## Environmental Scan Review Letters and Responses



**Your Safety • Your Mobility  
Your Economic Opportunity**

**IDAHO TRANSPORTATION DEPARTMENT**

P.O. Box 7129 • Boise, ID 83707-1129  
(208) 334-8000 • [itd.idaho.gov](http://itd.idaho.gov)

February 20, 2025

Jennifer Carrington  
Regional Director  
Bureau of Reclamation  
230 Collins Road  
Boise, Idaho 83702

RE: State Highway 44 (SH-44), Interstate 84 (I-84) to Star Road Planning and Environmental Linkages (PEL) Study Conditions Report Ready for Review

Dear Jennifer Carrington:

The purpose of this letter is to inform you that the Idaho Transportation (ITD) District 3 office, in consultation with the Federal Highway Administration (FHWA) has completed the Environmental Scan Report, which contains documented environmental existing conditions for the SH-44, I-84 to Star Road PEL Study. In a letter sent on May 2, 2024, ITD introduced the PEL study and committed to an opportunity for your agency to review and comment on the Environmental Scan Report.

The Environmental Scan Report and appendices are available for review. If your review of the Report results in comments, please submit those comments by the close of business on Thursday, March 20, 2025, and those comments will be considered and responded to ahead of the publication of the document. If you have no comments after the review, please let me know as well.

Please forward this information to the appropriate individual if you feel you are not the correct recipient. I look forward to your participation and thank you for your cooperation.

Sincerely

Mark Wasdahl, Project Manager



**Your Safety • Your Mobility**  
**Your Economic Opportunity**

**IDAHO TRANSPORTATION DEPARTMENT**

P.O. Box 7129 • Boise, ID 83707-1129  
(208) 334-8000 • [itd.idaho.gov](http://itd.idaho.gov)

February 18, 2025

Susan Buxton  
Director  
Idaho Department of Parks and Recreation  
5657 Warm Springs Avenue  
Boise, ID 83716

RE: State Highway 44 (SH-44), Interstate 84 (I-84) to Star Road Planning and Environmental Linkages (PEL) Study Conditions Report Ready for Review

Dear Susan Buxton:

The purpose of this letter is to inform you that the Idaho Transportation (ITD) District 3 office, in consultation with the Federal Highway Administration (FHWA) has completed the Environmental Scan Report, which contains documented environmental existing conditions for the SH-44, I-84 to Star Road PEL Study. In a letter sent on May 2, 2024, ITD introduced the PEL study and committed to an opportunity for your agency to review and comment on the Environmental Scan Report.

The Environmental Scan Report and appendices are available for review. If your review of the Report results in comments, please submit those comments by the close of business on Thursday, March 20, 2025, and those comments will be considered and responded to ahead of the publication of the document. If you have no comments after the review, please let me know as well.

Please forward this information to the appropriate individual if you feel you are not the correct recipient. I look forward to your participation and thank you for your cooperation.

Sincerely

Mark Wasdahl, Project Manager



**Your Safety • Your Mobility  
Your Economic Opportunity**

**IDAHO TRANSPORTATION DEPARTMENT**

P.O. Box 7129 • Boise, ID 83707-1129  
(208) 334-8000 • [itd.idaho.gov](http://itd.idaho.gov)

February 18, 2025

Heidy Bruner  
Environmental Specialist (ID/MT)  
Federal Aviation Administration  
2725 Skyway Dr, Ste 2  
Helena, MT 59602-1205

RE: State Highway 44 (SH-44), Interstate 84 (I-84) to Star Road Planning and Environmental Linkages (PEL) Study Conditions Report Ready for Review

Dear Heidy Bruner:

The purpose of this letter is to inform you that the Idaho Transportation (ITD) District 3 office, in consultation with the Federal Highway Administration (FHWA) has completed the Environmental Scan Report, which contains documented environmental existing conditions for the SH-44, I-84 to Star Road PEL Study. In a letter sent on May 2, 2024, ITD introduced the PEL study and committed to an opportunity for your agency to review and comment on the Environmental Scan Report.

The Environmental Scan Report and appendices are available for review. If your review of the Report results in comments, please submit those comments by the close of business on Thursday, March 20, 2025, and those comments will be considered and responded to ahead of the publication of the document. If you have no comments after the review, please let me know as well.

Please forward this information to the appropriate individual if you feel you are not the correct recipient. I look forward to your participation and thank you for your cooperation.

Sincerely

Mark Wasdahl, Project Manager



**Your Safety • Your Mobility  
Your Economic Opportunity**

**IDAHO TRANSPORTATION DEPARTMENT**

P.O. Box 7129 • Boise, ID 83707-1129  
(208) 334-8000 • [itd.idaho.gov](http://itd.idaho.gov)

February 18, 2025

Rob Oates  
Airport Manager  
Caldwell Executive Airport  
P.O. Box 1179  
Caldwell, ID 83606

RE: State Highway 44 (SH-44), Interstate 84 (I-84) to Star Road Planning and Environmental Linkages (PEL) Study Conditions Report Ready for Review

Dear Rob Oates:

The purpose of this letter is to inform you that the Idaho Transportation (ITD) District 3 office, in consultation with the Federal Highway Administration (FHWA) has completed the Environmental Scan Report, which contains documented environmental existing conditions for the SH-44, I-84 to Star Road PEL Study. In a letter sent on May 2, 2024, ITD introduced the PEL study and committed to an opportunity for your agency to review and comment on the Environmental Scan Report.

The Environmental Scan Report and appendices are available for review. If your review of the Report results in comments, please submit those comments by the close of business on Thursday, March 20, 2025, and those comments will be considered and responded to ahead of the publication of the document. If you have no comments after the review, please let me know as well.

Please forward this information to the appropriate individual if you feel you are not the correct recipient. I look forward to your participation and thank you for your cooperation.

Sincerely

Mark Wasdahl, Project Manager



**Your Safety • Your Mobility  
Your Economic Opportunity**

**IDAHO TRANSPORTATION DEPARTMENT**

P.O. Box 7129 • Boise, ID 83707-1129  
(208) 334-8000 • [itd.idaho.gov](http://itd.idaho.gov)

February 18, 2025

Russell A. Duke  
Director  
Central District Health  
707 North Armstrong Place  
Boise, ID 83704-0825

RE: State Highway 44 (SH-44), Interstate 84 (I-84) to Star Road Planning and Environmental Linkages (PEL) Study Conditions Report Ready for Review

Dear Russell A. Duke:

The purpose of this letter is to inform you that the Idaho Transportation (ITD) District 3 office, in consultation with the Federal Highway Administration (FHWA) has completed the Environmental Scan Report, which contains documented environmental existing conditions for the SH-44, I-84 to Star Road PEL Study. In a letter sent on May 2, 2024, ITD introduced the PEL study and committed to an opportunity for your agency to review and comment on the Environmental Scan Report.

The Environmental Scan Report and appendices are available for review. If your review of the Report results in comments, please submit those comments by the close of business on Thursday, March 20, 2025, and those comments will be considered and responded to ahead of the publication of the document. If you have no comments after the review, please let me know as well.

Please forward this information to the appropriate individual if you feel you are not the correct recipient. I look forward to your participation and thank you for your cooperation.

Sincerely

Mark Wasdahl, Project Manager



**Your Safety • Your Mobility  
Your Economic Opportunity**

**IDAHO TRANSPORTATION DEPARTMENT**

P.O. Box 7129 • Boise, ID 83707-1129  
(208) 334-8000 • [itd.idaho.gov](http://itd.idaho.gov)

February 18, 2025

Nikole Zogg  
Director  
Southwest District Health  
13307 Miami Lane  
Caldwell, ID 83607

RE: State Highway 44 (SH-44), Interstate 84 (I-84) to Star Road Planning and Environmental Linkages (PEL) Study Conditions Report Ready for Review

Dear Nikole Zogg:

The purpose of this letter is to inform you that the Idaho Transportation (ITD) District 3 office, in consultation with the Federal Highway Administration (FHWA) has completed the Environmental Scan Report, which contains documented environmental existing conditions for the SH-44, I-84 to Star Road PEL Study. In a letter sent on May 2, 2024, ITD introduced the PEL study and committed to an opportunity for your agency to review and comment on the Environmental Scan Report.

The Environmental Scan Report and appendices are available for review. If your review of the Report results in comments, please submit those comments by the close of business on Thursday, March 20, 2025, and those comments will be considered and responded to ahead of the publication of the document. If you have no comments after the review, please let me know as well.

Please forward this information to the appropriate individual if you feel you are not the correct recipient. I look forward to your participation and thank you for your cooperation.

Sincerely

Mark Wasdahl, Project Manager



**Your Safety • Your Mobility  
Your Economic Opportunity**

**IDAHO TRANSPORTATION DEPARTMENT**

P.O. Box 7129 • Boise, ID 83707-1129  
(208) 334-8000 • [itd.idaho.gov](http://itd.idaho.gov)

February 18, 2025

Dean Johnson  
Area Manager  
Idaho Department of Lands  
8355 W. State St.  
Boise, ID 83714

RE: State Highway 44 (SH-44), Interstate 84 (I-84) to Star Road Planning and Environmental Linkages (PEL) Study Conditions Report Ready for Review

Dear Dean Johnson:

The purpose of this letter is to inform you that the Idaho Transportation (ITD) District 3 office, in consultation with the Federal Highway Administration (FHWA) has completed the Environmental Scan Report, which contains documented environmental existing conditions for the SH-44, I-84 to Star Road PEL Study. In a letter sent on May 2, 2024, ITD introduced the PEL study and committed to an opportunity for your agency to review and comment on the Environmental Scan Report.

The Environmental Scan Report and appendices are available for review. If your review of the Report results in comments, please submit those comments by the close of business on Thursday, March 20, 2025, and those comments will be considered and responded to ahead of the publication of the document. If you have no comments after the review, please let me know as well.

Please forward this information to the appropriate individual if you feel you are not the correct recipient. I look forward to your participation and thank you for your cooperation.

Sincerely

Mark Wasdahl, Project Manager



**Your Safety • Your Mobility  
Your Economic Opportunity**

**IDAHO TRANSPORTATION DEPARTMENT**

P.O. Box 7129 • Boise, ID 83707-1129  
(208) 334-8000 • [itd.idaho.gov](http://itd.idaho.gov)

February 18, 2025

Bruce Sandoval  
Acting State Conservationist  
Natural Resources Conservation Service  
9173 W. Barnes Drive, Ste C  
Boise, ID 83709

RE: State Highway 44 (SH-44), Interstate 84 (I-84) to Star Road Planning and Environmental Linkages (PEL) Study Conditions Report Ready for Review

Dear Bruce Sandoval:

The purpose of this letter is to inform you that the Idaho Transportation (ITD) District 3 office, in consultation with the Federal Highway Administration (FHWA) has completed the Environmental Scan Report, which contains documented environmental existing conditions for the SH-44, I-84 to Star Road PEL Study. In a letter sent on May 2, 2024, ITD introduced the PEL study and committed to an opportunity for your agency to review and comment on the Environmental Scan Report.

The Environmental Scan Report and appendices are available for review. If your review of the Report results in comments, please submit those comments by the close of business on Thursday, March 20, 2025, and those comments will be considered and responded to ahead of the publication of the document. If you have no comments after the review, please let me know as well.

Please forward this information to the appropriate individual if you feel you are not the correct recipient. I look forward to your participation and thank you for your cooperation.

Sincerely

Mark Wasdahl, Project Manager



**Your Safety • Your Mobility  
Your Economic Opportunity**

**IDAHO TRANSPORTATION DEPARTMENT**

P.O. Box 7129 • Boise, ID 83707-1129  
(208) 334-8000 • [itd.idaho.gov](http://itd.idaho.gov)

February 18, 2025

Jim Fredericks  
Director  
Idaho Fish and Game  
600 S Walnut Street  
Boise, Idaho 83712

RE: State Highway 44 (SH-44), Interstate 84 (I-84) to Star Road Planning and Environmental Linkages (PEL) Study Conditions Report Ready for Review

Dear Jim Fredericks:

The purpose of this letter is to inform you that the Idaho Transportation (ITD) District 3 office, in consultation with the Federal Highway Administration (FHWA) has completed the Environmental Scan Report, which contains documented environmental existing conditions for the SH-44, I-84 to Star Road PEL Study. In a letter sent on May 2, 2024, ITD introduced the PEL study and committed to an opportunity for your agency to review and comment on the Environmental Scan Report.

The Environmental Scan Report and appendices are available for review. If your review of the Report results in comments, please submit those comments by the close of business on Thursday, March 20, 2025, and those comments will be considered and responded to ahead of the publication of the document. If you have no comments after the review, please let me know as well.

Please forward this information to the appropriate individual if you feel you are not the correct recipient. I look forward to your participation and thank you for your cooperation.

Sincerely

Mark Wasdahl, Project Manager



**Your Safety • Your Mobility  
Your Economic Opportunity**

**IDAHO TRANSPORTATION DEPARTMENT**

P.O. Box 7129 • Boise, ID 83707-1129  
(208) 334-8000 • [itd.idaho.gov](http://itd.idaho.gov)

February 18, 2025

Maureen O'Shea  
State Floodplain Coordinator  
Idaho Department of Water Resources  
322 E Front St STE 648  
Po Box 83720  
Boise ID 83720-0098

RE: State Highway 44 (SH-44), Interstate 84 (I-84) to Star Road Planning and Environmental Linkages (PEL) Study Conditions Report Ready for Review

Dear Maureen O'Shea:

The purpose of this letter is to inform you that the Idaho Transportation (ITD) District 3 office, in consultation with the Federal Highway Administration (FHWA) has completed the Environmental Scan Report, which contains documented environmental existing conditions for the SH-44, I-84 to Star Road PEL Study. In a letter sent on May 2, 2024, ITD introduced the PEL study and committed to an opportunity for your agency to review and comment on the Environmental Scan Report.

The Environmental Scan Report and appendices are available for review. If your review of the Report results in comments, please submit those comments by the close of business on Thursday, March 20, 2025, and those comments will be considered and responded to ahead of the publication of the document. If you have no comments after the review, please let me know as well.

Please forward this information to the appropriate individual if you feel you are not the correct recipient. I look forward to your participation and thank you for your cooperation.

Sincerely

A handwritten signature in blue ink that reads "Mark Wasdahl".

Mark Wasdahl, Project Manager



**Your Safety • Your Mobility  
Your Economic Opportunity**

**IDAHO TRANSPORTATION DEPARTMENT**

P.O. Box 7129 • Boise, ID 83707-1129  
(208) 334-8000 • [itd.idaho.gov](http://itd.idaho.gov)

February 18, 2025

Aaron Golart  
State Coordinator Stream Protection Program  
Idaho Department of Water Resources  
322 E Front St STE 648  
Po Box 83720  
Boise ID 83720-0098

RE: State Highway 44 (SH-44), Interstate 84 (I-84) to Star Road Planning and Environmental Linkages (PEL) Study Conditions Report Ready for Review

Dear Aaron Golart:

The purpose of this letter is to inform you that the Idaho Transportation (ITD) District 3 office, in consultation with the Federal Highway Administration (FHWA) has completed the Environmental Scan Report, which contains documented environmental existing conditions for the SH-44, I-84 to Star Road PEL Study. In a letter sent on May 2, 2024, ITD introduced the PEL study and committed to an opportunity for your agency to review and comment on the Environmental Scan Report.

The Environmental Scan Report and appendices are available for review. If your review of the Report results in comments, please submit those comments by the close of business on Thursday, March 20, 2025, and those comments will be considered and responded to ahead of the publication of the document. If you have no comments after the review, please let me know as well.

Please forward this information to the appropriate individual if you feel you are not the correct recipient. I look forward to your participation and thank you for your cooperation.

Sincerely

Mark Wasdahl, Project Manager



**Your Safety • Your Mobility  
Your Economic Opportunity**

**IDAHO TRANSPORTATION DEPARTMENT**

P.O. Box 7129 • Boise, ID 83707-1129  
(208) 334-8000 • [itd.idaho.gov](http://itd.idaho.gov)

February 18, 2025

Troy Smith  
Regional Administrator  
Idaho Department of Environmental Quality  
1445 N. Orchard St.  
Boise, ID 83706

RE: State Highway 44 (SH-44), Interstate 84 (I-84) to Star Road Planning and Environmental Linkages (PEL) Study Conditions Report Ready for Review

Dear Troy Smith:

The purpose of this letter is to inform you that the Idaho Transportation (ITD) District 3 office, in consultation with the Federal Highway Administration (FHWA) has completed the Environmental Scan Report, which contains documented environmental existing conditions for the SH-44, I-84 to Star Road PEL Study. In a letter sent on May 2, 2024, ITD introduced the PEL study and committed to an opportunity for your agency to review and comment on the Environmental Scan Report.

The Environmental Scan Report and appendices are available for review. If your review of the Report results in comments, please submit those comments by the close of business on Thursday, March 20, 2025, and those comments will be considered and responded to ahead of the publication of the document. If you have no comments after the review, please let me know as well.

Please forward this information to the appropriate individual if you feel you are not the correct recipient. I look forward to your participation and thank you for your cooperation.

Sincerely

A handwritten signature in blue ink that reads "Mark Wasdahl".

Mark Wasdahl, Project Manager



**Your Safety • Your Mobility  
Your Economic Opportunity**

**IDAHO TRANSPORTATION DEPARTMENT**

P.O. Box 7129 • Boise, ID 83707-1129  
(208) 334-8000 • [itd.idaho.gov](http://itd.idaho.gov)

February 18, 2025

Lisa Ellis  
State Supervisor  
U.S. Fish and Wildlife Service  
1387 South Vinnell Way, Suite 368  
Boise, Idaho 83709-1657

RE: State Highway 44 (SH-44), Interstate 84 (I-84) to Star Road Planning and Environmental Linkages (PEL) Study Conditions Report Ready for Review

Dear Lisa Ellis:

The purpose of this letter is to inform you that the Idaho Transportation (ITD) District 3 office, in consultation with the Federal Highway Administration (FHWA) has completed the Environmental Scan Report, which contains documented environmental existing conditions for the SH-44, I-84 to Star Road PEL Study. In a letter sent on May 2, 2024, ITD introduced the PEL study and committed to an opportunity for your agency to review and comment on the Environmental Scan Report.

The Environmental Scan Report and appendices are available for review. If your review of the Report results in comments, please submit those comments by the close of business on Thursday, March 20, 2025, and those comments will be considered and responded to ahead of the publication of the document. If you have no comments after the review, please let me know as well.

Please forward this information to the appropriate individual if you feel you are not the correct recipient. I look forward to your participation and thank you for your cooperation.

Sincerely

Mark Wasdahl, Project Manager



**Your Safety • Your Mobility  
Your Economic Opportunity**

**IDAHO TRANSPORTATION DEPARTMENT**

P.O. Box 7129 • Boise, ID 83707-1129  
(208) 334-8000 • [itd.idaho.gov](http://itd.idaho.gov)

February 18, 2025

Jacob Cordtz  
ITD Liaison/Environmental Resource Specialist  
U.S. Army Corps of Engineers  
720 E Park Boulevard, Suite 245  
Boise, Idaho 83712

RE: State Highway 44 (SH-44), Interstate 84 (I-84) to Star Road Planning and Environmental Linkages (PEL) Study Conditions Report Ready for Review

Dear Jacob Cordtz:

The purpose of this letter is to inform you that the Idaho Transportation (ITD) District 3 office, in consultation with the Federal Highway Administration (FHWA) has completed the Environmental Scan Report, which contains documented environmental existing conditions for the SH-44, I-84 to Star Road PEL Study. In a letter sent on May 2, 2024, ITD introduced the PEL study and committed to an opportunity for your agency to review and comment on the Environmental Scan Report.

The Environmental Scan Report and appendices are available for review. If your review of the Report results in comments, please submit those comments by the close of business on Thursday, March 20, 2025, and those comments will be considered and responded to ahead of the publication of the document. If you have no comments after the review, please let me know as well.

Please forward this information to the appropriate individual if you feel you are not the correct recipient. I look forward to your participation and thank you for your cooperation.

Sincerely

Mark Wasdahl, Project Manager



**Your Safety • Your Mobility  
Your Economic Opportunity**

**IDAHO TRANSPORTATION DEPARTMENT**

P.O. Box 7129 • Boise, ID 83707-1129  
(208) 334-8000 • [itd.idaho.gov](http://itd.idaho.gov)

February 18, 2025

Dan Opalski  
Region 10 Administrator  
Environmental Protection Agency  
1200 Sixth Avenue, Suite 155  
Seattle, Washington 98101

RE: State Highway 44 (SH-44), Interstate 84 (I-84) to Star Road Planning and Environmental Linkages (PEL) Study Conditions Report Ready for Review

Dear Dan Opalski:

The purpose of this letter is to inform you that the Idaho Transportation (ITD) District 3 office has completed the Environmental Scan Report, which contains documented environmental existing conditions for the SH-44, I-84 to Star Road PEL Study. In a letter sent on May 2, 2024, ITD introduced the PEL study and committed to an opportunity for your agency to review and comment on the Environmental Scan Report.

The Environmental Scan Report and appendices are available for review. If your review of the Report results in comments, please submit those comments by the close of business on Thursday, March 20, 2025, and those comments will be considered and responded to ahead of the publication of the document. If you have no comments after the review, please let me know as well.

Please forward this information to the appropriate individual if you feel you are not the correct recipient. I look forward to your participation and thank you for your cooperation.

Sincerely

Mark Wasdahl, Project Manager



February 21, 2025

Nicole Parks  
Senior Environmental Scientist/Project Manager  
David Evans and Associates, Inc.  
9175 W. Black Eagle Drive  
Boise, ID, 83709  
[nicole.parks@deainc.com](mailto:nicole.parks@deainc.com)

Subject: State Highway 44 (SH-44), Interstate 84 (I-84) to Star Road Planning and Environmental Linkages (PEL) Study Conditions Report Ready for Review

Dear Ms. Parks

Thank you for the opportunity to respond to your request for comment. While DEQ does not review projects on a project-specific basis, we attempt to provide the best review of the information provided. DEQ encourages agencies to review and utilize the Idaho Environmental Guide to assist in addressing project-specific conditions that may apply. This guide can be found at:  
<https://www.deq.idaho.gov/public-information/assistance-and-resources/outreach-and-education/>.

The following information does not cover every aspect of this project; however, we have the following general comments to use as appropriate:

#### 1. AIR QUALITY

- Please review IDAPA 58.01.01 for all rules on Air Quality, especially those regarding fugitive dust (58.01.01.651), trade waste burning (58.01.01.600-617), and odor control plans (58.01.01.776).

For questions, contact David Luft, Air Quality Manager, at (208) 373-0550.

- IDAPA 58.01.01.201 requires an owner or operator of a facility to obtain an air quality permit to construct prior to the commencement of construction or modification of any facility that will be a source of air pollution in quantities above established levels. DEQ asks that cities and counties require a proposed facility to contact DEQ for an applicability determination on their proposal to ensure they remain in compliance with the rules.

For questions, contact the DEQ Air Quality Permitting Hotline at 1-877-573-7648.

## **2. WASTEWATER AND RECYCLED WATER**

- DEQ recommends verifying that there is adequate sewer to serve this project prior to approval. Please contact the sewer provider for a capacity statement, declining balance report, and willingness to serve this project.
- IDAPA 58.01.16 and IDAPA 58.01.17 are the sections of Idaho rules regarding wastewater and recycled water. Please review these rules to determine whether this or future projects will require DEQ approval. IDAPA 58.01.03 is the section of Idaho rules regarding subsurface disposal of wastewater. Please review this rule to determine whether this or future projects will require permitting by the district health department.
- All projects for construction or modification of wastewater systems require preconstruction approval. Recycled water projects and subsurface disposal projects require separate permits as well.
- DEQ recommends that projects be served by existing approved wastewater collection systems or a centralized community wastewater system whenever possible. Please contact DEQ to discuss potential for development of a community treatment system along with best management practices for communities to protect ground water.
- DEQ recommends that cities and counties develop and use a comprehensive land use management plan, which includes the impacts of present and future wastewater management in this area. Please schedule a meeting with DEQ for further discussion and recommendations for plan development and implementation.

For questions, contact Valerie Greear, Water Quality Engineering Manager at (208) 373-0550.

## **3. DRINKING WATER**

- DEQ recommends verifying that there is adequate water to serve this project prior to approval. Please contact the water provider for a capacity statement, declining balance report, and willingness to serve this project.
- IDAPA 58.01.08 is the section of Idaho rules regarding public drinking water systems. Please review these rules to determine whether this or future projects will require DEQ approval.
- All projects for construction or modification of public drinking water systems require preconstruction approval.
- DEQ recommends verifying if the current and/or proposed drinking water system is a regulated public drinking water system (refer to the DEQ website at: <https://www.deq.idaho.gov/water-quality/drinking-water/>). For non-regulated systems, DEQ recommends annual testing for total coliform bacteria, nitrate, and nitrite.
- If any private wells will be included in this project, we recommend that they be tested for total coliform bacteria, nitrate, and nitrite prior to use and retested annually thereafter.
- DEQ recommends using an existing drinking water system whenever possible or construction of a new community drinking water system. Please contact DEQ to discuss this project and to explore options to both best serve the future residents of this development and provide for protection of ground water resources.
- DEQ recommends cities and counties develop and use a comprehensive land use management plan which addresses the present and future needs of this area for adequate, safe, and sustainable drinking water. Please schedule a meeting with DEQ for further discussion and recommendations for plan development and implementation.

For questions, contact Valerie Greear, Water Quality Engineering Manager at (208) 373-0550.

#### 4. SURFACE WATER

- Please contact DEQ to determine whether this project will require an Idaho Pollutant Discharge Elimination System (IPDES) Permit. A Multi-Sector General Permit from DEQ may be required for facilities that have an allowable discharge of storm water or authorized non-storm water associated with the primary industrial activity and co-located industrial activity.

For questions, contact James Craft, IPDES Compliance Supervisor, at (208) 373-0144.

- If this project is near a source of surface water, DEQ requests that projects incorporate construction best management practices (BMPs) to assist in the protection of Idaho's water resources. Additionally, please contact DEQ to identify BMP alternatives and to determine whether this project is in an area with Total Maximum Daily Load stormwater permit conditions.
- The Idaho Stream Channel Protection Act requires a permit for most stream channel alterations. Please contact the Idaho Department of Water Resources (IDWR), Western Regional Office, at 2735 Airport Way, Boise, or call (208) 334-2190 for more information. Information is also available on the IDWR website at: <https://idwr.idaho.gov/streams/stream-channel-alteration-permits.html>
- The Federal Clean Water Act requires a permit for filling or dredging in waters of the United States. Please contact the US Army Corps of Engineers, Boise Field Office, at 10095 Emerald Street, Boise, or call 208-345-2155 for more information regarding permits.

For questions, contact Lance Holloway, Surface Water Manager, at (208) 373-0550.

#### 5. SOLID WASTE, HAZARDOUS WASTE AND GROUND WATER CONTAMINATION

- **Solid Waste.** No trash or other solid waste shall be buried, burned, or otherwise disposed of at the project site. These disposal methods are regulated by various state regulations including Idaho's Solid Waste Management Regulations and Standards (IDAPA 58.01.06), Rules and Regulations for Hazardous Waste (IDAPA 58.01.05), and Rules and Regulations for the Prevention of Air Pollution (IDAPA 58.01.01). Inert and other approved materials are also defined in the Solid Waste Management Regulations and Standards
- **Hazardous Waste.** The types and number of requirements that must be complied with under the federal Resource Conservations and Recovery Act (RCRA) and the Idaho Rules and Standards for Hazardous Waste (IDAPA 58.01.05) are based on the quantity and type of waste generated. Every business in Idaho is required to track the volume of waste generated, determine whether each type of waste is hazardous, and ensure that all wastes are properly disposed of according to federal, state, and local requirements.
- **Water Quality Standards.** Site activities must comply with the Idaho Water Quality Standards (IDAPA 58.01.02) regarding hazardous and deleterious-materials storage, disposal, or accumulation adjacent to or in the immediate vicinity of state waters (IDAPA 58.01.02.800); and the cleanup and reporting of oil-filled electrical equipment (IDAPA 58.01.02.849); hazardous materials (IDAPA 58.01.02.850); and used-oil and petroleum releases (IDAPA 58.01.02.851 and 852). Petroleum releases must be reported to DEQ in accordance with IDAPA 58.01.02.851.01 and 04. Hazardous material releases to state waters, or to land such that there is likelihood that it will enter state waters, must be reported to DEQ in accordance with IDAPA 58.01.02.850.
- **Ground Water Contamination.** DEQ requests that this project comply with Idaho's Ground Water Quality Rules (IDAPA 58.01.11), which states that "No person shall cause or allow the release, spilling, leaking, emission, discharge, escape, leaching, or disposal of a contaminant

into the environment in a manner that causes a ground water quality standard to be exceeded, injures a beneficial use of ground water, or is not in accordance with a permit, consent order or applicable best management practice, best available method or best practical method.”

For questions, contact Matthew Pabich, Waste & Remediation Manager, at (208) 373-0550.

## 6. ADDITIONAL NOTES

- If an underground storage tank (UST) or an aboveground storage tank (AST) is identified at the site, the site should be evaluated to determine whether the UST is regulated by DEQ. EPA regulates ASTs. UST and AST sites should be assessed to determine whether there is potential soil and ground water contamination. Please call DEQ at (208) 373-0550, or visit the DEQ website <https://www.deq.idaho.gov/waste-management-and-remediation/storage-tanks/leaking-underground-storage-tanks-in-idaho/> for assistance.
- If applicable to this project, DEQ recommends that BMPs be implemented for any of the following conditions: wash water from cleaning vehicles, fertilizers and pesticides, animal facilities, composted waste, and ponds. Please contact DEQ for more information on any of these conditions.

We look forward to working with you in a proactive manner to address potential environmental impacts that may be within our regulatory authority. If you have any questions, please contact me, or any of our technical staff at (208) 373-0550.

Sincerely,

A handwritten signature in blue ink that reads "Troy G. Smith". The signature is stylized with a large initial "T" and a long horizontal stroke at the end.

Troy Smith  
Regional Administrator

**From:** [Bruner, Heidi S \(FAA\)](#)  
**To:** [Nicole Parks](#)  
**Cc:** [David Witthaus](#); [Johnson, Matthew F \(FAA\)](#); [Scott Swanson](#)  
**Subject:** RE: State Highway 44 (SH-44), Interstate 84 (I-84) to Star Road Planning and Environmental Linkages (PEL) Study Conditions Report Ready for Review  
**Date:** Wednesday, February 19, 2025 9:07:00 AM

---

Dear Ms. Parks,

Thank you for your email regarding the subject project. As requested, we have reviewed the documents you provided in regard to potential impacts to local airports and their surrounding airspace.

The proposed project seems unlikely to create wildlife hazards, which would be a concern to the FAA for a new project being constructed within a separation distance that the FAA evaluates for potential wildlife attractants. (This separation distance is 5,000 feet for an airport serving piston-powered aircraft, and 10,000 feet for airports serving turbine-powered aircraft.)

An Obstruction Evaluation / Airport Airspace Analysis (OE/AAA), FAA Form 7460-1, Notice of Proposed Construction or Alteration may be required for the proposed project. The criteria for evaluating whether an OE/AAA is required and a link to file the form online can be found at the following site: <https://oeaaa.faa.gov/oeaaa/external/portal.jsp>

It appears that the nearest airport is Caldwell Executive Airport. I have copied them to ensure they are aware of your inquiry.

If substantial changes are made to this proposed project which may concern airport property, please contact us for additional evaluation and comment or if you have any questions.

Thank you,  
*Heidy*

**Heidy Bruner, P.E.**  
**Environmental Protection Specialist (Idaho)**  
Helena Airports District Office - FAA Northwest Mountain Region  
406.441.5221

---

**From:** Nicole Parks <Nicole.Parks@deainc.com>  
**Sent:** Tuesday, February 18, 2025 2:17 PM  
**To:** Bruner, Heidi S (FAA) <Heidy.S.Bruner@faa.gov>  
**Cc:** David Witthaus <David.Witthaus@deainc.com>  
**Subject:** State Highway 44 (SH-44), Interstate 84 (I-84) to Star Road Planning and Environmental Linkages (PEL) Study Conditions Report Ready for Review

**CAUTION:** This email originated from outside of the Federal Aviation Administration (FAA). Do not click on links or open attachments unless you recognize the sender and know the content is safe.

Ms. Bruner-

David Evans and Associates, Inc. is working with the Idaho Transportation Department on the SH-44, I-84 to Star Road Planning and Environmental Linkages Study in Ada and Canyon counties. Attached is the draft environmental scan prepared for the project for review and comment. Please provide comments by Thursday, March 20, 2025.

Thanks

**Nicole Parks** | Senior Environmental Scientist/Project Manager | Water & Environment  
**David Evans and Associates, Inc.**

9175 W. Black Eagle Drive | Boise, ID, 83709 | [www.deainc.com](http://www.deainc.com)

d: 208.900.9044 | c: 208.409.0320 | Cisco: 47044 | [nicole.parks@deainc.com](mailto:nicole.parks@deainc.com)

[ENERGY](#) | [LAND DEVELOPMENT](#) | [MARINE SERVICES](#) | [SURVEYING AND GEOMATICS](#) | [TRANSPORTATION](#) | [WATER AND ENVIRONMENT](#)

\_\_\_\_\_

This email and any attachments transmitted with it are the property of David Evans and Associates, Inc. and may contain information that is confidential or otherwise protected from disclosure. The information is intended solely for the use of the individual(s) to whom it is addressed. Unauthorized use, copying, distribution or disclosure of any of it is strictly prohibited. We assume no responsibility to persons other than the intended, named recipient(s) and do not accept any liability for any errors or omissions which are a result of email transmission. If you have received this message in error, please notify us immediately and confirm that the message and any attachments and copies have been destroyed and deleted.

\_\_\_\_\_

**From:** [Flack, Brandon](#)  
**To:** [Nicole Parks](#); [David Witthaus](#)  
**Subject:** Re: State Highway 44 (SH-44), Interstate 84 (I-84) to Star Road Planning and Environmental Linkages (PEL) Study Conditions Report Ready for Review  
**Date:** Friday, March 28, 2025 5:02:47 PM

---

Hi Nicole,

This was forwarded to me by our Director since this project is occurring in my region of the state. Apologies for not getting back to you by the 20<sup>th</sup> as you requested.

In general, IDFG provides the following BMPs to consider to support pollinators and pollinator habitat along roadways:

- **Protect Existing Habitat:** Protect existing stands of native vegetation. Ground disturbing activities should be limited only to those areas deemed necessary for the construction of the project. Disturbing existing areas of native vegetation purely for the convenience of the contractor should be avoided.
- **Herbicide Use:** Reduce the risk of herbicide exposure to pollinators by:
  - Utilizing non-chemical (manual) methods to eliminate noxious and undesirable weeds.
  - If herbicide use is necessary, spot treat specific weeds with selective herbicides that do not leave residuals in the soil.
  - Treat weeds before they flower, to avoid spraying when pollinators are present.
  - Avoid spray application if winds are above 10 mph (state law).
- **Re-vegetation:** Revegetate disturbed areas with a minimum of three eco-regional native plant species (including milkweed) that provide overlapping bloom times from early spring to late fall.
- **Seeding:** If Milkweed is disturbed during the project actions, then the areas will be replanted with milkweed after construction.

Thanks and please let me know if you need anything else.

**Brandon Flack**

Regional Technical Assistance Manager  
Idaho Dept. of Fish and Game  
Southwest Region  
15950 N. Gate Blvd.  
Nampa, ID 83687  
Ph: (208) 854-8947



---

**From:** Fredericks, Jim <jim.fredericks@idfg.idaho.gov>

**Sent:** Tuesday, February 18, 2025 3:01 PM  
**To:** Flack,Brandon <brandon.flack@idfg.idaho.gov>  
**Subject:** Fw: State Highway 44 (SH-44), Interstate 84 (I-84) to Star Road Planning and Environmental Linkages (PEL) Study Conditions Report Ready for Review

Brandon--in case you didn't get this...

Get [Outlook for Android](#)

---

**From:** Nicole Parks <Nicole.Parks@deainc.com>  
**Sent:** Tuesday, February 18, 2025 2:16:52 PM  
**To:** Fredericks,Jim <jim.fredericks@idfg.idaho.gov>  
**Cc:** David Witthaus <David.Witthaus@deainc.com>  
**Subject:** State Highway 44 (SH-44), Interstate 84 (I-84) to Star Road Planning and Environmental Linkages (PEL) Study Conditions Report Ready for Review

**CAUTION: This email originated outside the State of Idaho network. Verifv links and attachments BEFORE you click or open, even if you recognize and/or trust the sender. Contact your agency service desk with any concerns.**

---

Mr. Fredericks-

David Evans and Associates, Inc. is working with the Idaho Transportation Department on the SH-44, I-84 to Star Road Planning and Environmental Linkages Study in Ada and Canyon counties. Attached is the draft environmental scan prepared for the project for review and comment. Please provide comments by Thursday, March 20, 2025.

Thanks

**Nicole Parks** | Senior Environmental Scientist/Project Manager | Water & Environment  
**David Evans and Associates, Inc.**

9175 W. Black Eagle Drive | Boise, ID, 83709 | [www.deainc.com](http://www.deainc.com)

d: 208.900.9044 | c: 208.409.0320 | Cisco: 47044 | [nicole.parks@deainc.com](mailto:nicole.parks@deainc.com)

[ENERGY](#) | [LAND DEVELOPMENT](#) | [MARINE SERVICES](#) | [SURVEYING AND GEOMATICS](#) | [TRANSPORTATION](#) | [WATER AND ENVIRONMENT](#)



This email and any attachments transmitted with it are the property of David Evans and Associates, Inc. and may contain information that is confidential or otherwise protected from disclosure. The information is intended solely for the use of the individual(s) to whom it is addressed. Unauthorized use, copying, distribution or disclosure of any of it is strictly prohibited. We assume no responsibility to persons other than the intended, named recipient(s) and do not accept any liability for any errors or omissions which are a result of email transmission. If you have received this message in error, please notify us immediately and confirm that the message and any attachments and copies have been destroyed and deleted.



**From:** [O'Shea, Maureen](#)  
**To:** [Nicole Parks](#)  
**Cc:** [David Witthaus](#); [Jackson, Peter](#)  
**Subject:** re: State Highway 44 (SH-44), Interstate 84 (I-84) to Star Road Planning and Environmental Linkages (PEL) Study Conditions Report Ready for Review  
**Date:** Thursday, February 20, 2025 12:59:27 PM  
**Attachments:** [IDWR SFC PEL Environmental Scan Report Review Request 02182025.pdf](#)  
[23630 FINAL ES 02062025.pdf](#)  
[Hwy 44 from Star to I-84 Floodplain images 2-20-2025.pdf](#)

---

Nicole,

The project will require Floodplain Development Permits from Star, Middleton, & Canyon County. Based on page 12, DEA Inc. is aware of this requirement.

FYI:

Bridges and Culverts: IDAPA 37.03.07 Rule 59 requires that communities participating in the NFIP must have 1.0 ft. freeboard above the 100-year flow. Thus, the low chord must be at least 1.0 ft. above the Base Flood Elevation (BFE). A culvert must contain the 1%-chance flow plus the 1.0 ft. freeboard. In an A Zone without BFE the BFE will be determined by a Hydrologic & Hydraulic Analysis the project applicant develops. The Hydrologic & Hydraulic Analysis with BFE will be provided to the community as a part of the Floodplain Development Permit.

Upon completion of the project, the project applicant may be required to submit a Letter of Map Revision (LOMR) application to FEMA. Consult with the Idaho Department of Water Resources State Coordinator for the National Flood Insurance Program (NFIP) should questions arise or interpretation be needed. Peter Jackson, copied on this email, is the new State NFIP Coordinator, 208-287-4973 or [peter.jackson@idwr.idaho.gov](mailto:peter.jackson@idwr.idaho.gov)

Should you have further questions please do not hesitate to contact Peter or I.

*[I am working part-time & generally available from 9:00 a.m. to noon Monday through Thursday.](#)*

Thank you,  
Maureen O'Shea, CFM  
Floodplain Specialist  
Idaho Dept. of Water Resources  
322 E. Front Street, PO Box 83720,  
Boise, ID 83720-0098  
Office # 208-287-4928  
Cell # 208-830-4174  
[Maureen.OShea@idwr.idaho.gov](mailto:Maureen.OShea@idwr.idaho.gov)  
<https://www.idwr.idaho.gov/floods/>

---

**From:** Nicole Parks <Nicole.Parks@deainc.com>  
**Sent:** Tuesday, February 18, 2025 2:16 PM  
**To:** O'Shea, Maureen <Maureen.OShea@idwr.idaho.gov>  
**Cc:** David Witthaus <David.Witthaus@deainc.com>  
**Subject:** State Highway 44 (SH-44), Interstate 84 (I-84) to Star Road Planning and Environmental Linkages (PEL) Study Conditions Report Ready for Review

Ms. O'Shea-

David Evans and Associates, Inc. is working with the Idaho Transportation Department on the SH-44, I-84 to Star Road Planning and Environmental Linkages Study in Ada and Canyon counties. Attached is the draft environmental scan prepared for the project for review and comment. Please provide comments by Thursday, March 20, 2025.

Thanks

**Nicole Parks** | Senior Environmental Scientist/Project Manager | Water & Environment  
**David Evans and Associates, Inc.**

9175 W. Black Eagle Drive | Boise, ID, 83709 | [www.deainc.com](http://www.deainc.com)  
d: 208.900.9044 | c: 208.409.0320 | Cisco: 47044 | [nicole.parks@deainc.com](mailto:nicole.parks@deainc.com)  
[ENERGY](#) | [LAND DEVELOPMENT](#) | [MARINE SERVICES](#) | [SURVEYING AND GEOMATICS](#) | [TRANSPORTATION](#) | [WATER AND ENVIRONMENT](#)



This email and any attachments transmitted with it are the property of David Evans and Associates, Inc. and may contain information that is confidential or otherwise protected from disclosure. The information is intended solely for the use of the individual(s) to whom it is addressed. Unauthorized use, copying, distribution or disclosure of any of it is strictly prohibited. We assume no responsibility to persons other than the intended, named recipient(s) and do not accept any liability for any errors or omissions which are a result of email transmission. If you have received this message in error, please notify us immediately and confirm that the message and any attachments and copies have been destroyed and deleted.



**From:** [Sandoval, Bruce - FPAC-NRCS, ID](#)  
**To:** [Nicole Parks](#)  
**Cc:** [David Witthaus](#); [Murdock, Daniel - FPAC-NRCS, ID](#)  
**Subject:** RE: [EXTERNAL: Suspicious Link]State Highway 44 (SH-44), Interstate 84 (I-84) to Star Road Planning and Environmental Linkages (PEL) Study Conditions Report Ready for Review  
**Date:** Monday, February 24, 2025 3:27:24 PM  
**Attachments:** [image001.png](#)

---

Hi Nicole,

I've made a cursory review of the PEL. I have no comments.

**V. Bruce Sandoval, P.E.**  
formerly State Conservationist, Acting  
State Conservation Engineer  
Manager, Watershed Programs

 **U.S. DEPARTMENT OF AGRICULTURE**  
Natural Resources Conservation Service  
Idaho State Office  
9173 Barnes Dr. Suite C, Boise, ID 83709  
Office: (208) 378-5727  
Mobile: (208) 781-0191

---

**From:** Nicole Parks <Nicole.Parks@deainc.com>  
**Sent:** Tuesday, February 18, 2025 2:16 PM  
**To:** Sandoval, Bruce - FPAC-NRCS, ID <bruce.sandoval@usda.gov>  
**Cc:** David Witthaus <David.Witthaus@deainc.com>  
**Subject:** [EXTERNAL: Suspicious Link]State Highway 44 (SH-44), Interstate 84 (I-84) to Star Road Planning and Environmental Linkages (PEL) Study Conditions Report Ready for Review

You don't often get email from [nicole.parks@deainc.com](mailto:nicole.parks@deainc.com). [Learn why this is important](#)

**CAUTION:** This message triggered warnings of **potentially** malicious web content. Consider whether you are expecting the message, along with inspection for suspicious links, prior to clicking. Any concerns with known senders, use a good contact method to verify.

**Send Questions or Suspicious messages to:** [Spam.Abuse@usda.gov](mailto:Spam.Abuse@usda.gov)

Mr. Sandoval-

David Evans and Associates, Inc. is working with the Idaho Transportation Department on the SH-44, I-84 to Star Road Planning and Environmental Linkages Study in Ada and Canyon counties. Attached is the draft environmental scan prepared for the project for review and comment. Please provide comments by Thursday, March 20, 2025.

Thanks

**Nicole Parks** | Senior Environmental Scientist/Project Manager | Water & Environment  
**David Evans and Associates, Inc.**

9175 W. Black Eagle Drive | Boise, ID, 83709 | [www.deainc.com](http://www.deainc.com)

d: 208.900.9044 | c: 208.409.0320 | Cisco: 47044 | [nicole.parks@deainc.com](mailto:nicole.parks@deainc.com)

[ENERGY](#) | [LAND DEVELOPMENT](#) | [MARINE SERVICES](#) | [SURVEYING AND GEOMATICS](#) | [TRANSPORTATION](#) | [WATER AND ENVIRONMENT](#)



This email and any attachments transmitted with it are the property of David Evans and Associates, Inc. and may contain information that is confidential or otherwise protected from disclosure. The information is intended solely for the use of the individual(s) to whom it is addressed. Unauthorized use, copying, distribution or disclosure of any of it is strictly prohibited. We assume no responsibility to persons other than the intended, named recipient(s) and do not accept any liability for any errors or omissions which are a result of email transmission. If you have received this message in error, please notify us immediately and confirm that the message and any attachments and copies have been destroyed and deleted.



This electronic message contains information generated by the USDA solely for the intended recipients. Any unauthorized interception of this message or the use or disclosure of the information it contains may violate the law and subject the violator to civil or criminal penalties. If you believe you have received this message in error, please notify the sender and delete the email immediately.

## **PEL Alternatives Evaluation Review Letters and Responses**



**Your Safety • Your Mobility**  
**Your Economic Opportunity**

**IDAHO TRANSPORTATION DEPARTMENT**

P.O. Box 7129 • Boise, ID 83707-1129  
(208) 334-8000 • [itd.idaho.gov](http://itd.idaho.gov)

September 11, 2025

Dan Everhart  
Interim Administrator  
State Historic Preservation Office  
210 Main Street  
Boise, Idaho 83702

RE: State Highway 44 (SH-44), Interstate 84 (I-84) to Star Road Planning and Environmental Linkages (PEL) Study Alternatives Screening and Next Steps

Dear Mr. Everhart:

The Idaho Transportation Department (ITD) is currently finishing a Planning and Environmental Linkages (PEL) Study for SH-44, from I-84 to Star Road, in Ada and Canyon counties, Idaho. The purpose of the PEL study is to develop and evaluate a range of alternatives to address existing and projected congestion and safety concerns, and to identify alternatives to carry forward into the National Environmental Policy Act (NEPA) process.

A draft project purpose and need statement was developed early in the study and used as the foundation for developing concept-level alternatives. Each alternative has been reviewed and evaluated using screening criteria tailored to each screening level. Additional information and exhibits related to the Level One and Level Two screening processes are provided in the attached Alternatives Evaluation Memo.

Final Level 2 alternatives that were evaluated are as follows:

- Alternative 1: SH-44 Widening and Improvements on Existing Alignment
- Alternative 2: SH-44 South Alternate Route around Middleton at Ballard Lane
- Alternative 3: SH-44 South Alternate Route around Middleton at Cemetery Road
- Alternative 4: SH-44 One-way Couplet through Middleton to South

Through Level 1 and Level 2 screening and significant public and stakeholder engagement, ITD recommends advancing Alternatives 2 and 3 into NEPA. Alternatives 1 and 4 are not recommended. However, additional pre-NEPA design and analysis will be performed on all four alternatives where they deviate from the existing SH-44 alignment in Middleton in order to confirm which alternatives will move forward into NEPA for detailed analysis.

As part of this evaluation, ITD provided preliminary information regarding cultural resources that may be present along each alternative. These estimates are based on planning-level assessments only; no formal field surveys or Section 106 of the National Historic Preservation Act (NHPA) identification efforts have been conducted to date. Cultural resource data was obtained through a desktop review of the Idaho Cultural Resource Information System database. A windshield survey was also



**Your Safety • Your Mobility  
Your Economic Opportunity**

**IDAHO TRANSPORTATION DEPARTMENT**

P.O. Box 7129 • Boise, ID 83707-1129  
(208) 334-8000 • [itd.idaho.gov](http://itd.idaho.gov)

conducted to provide general field verification of the presence or absence of observable resources within the alternative corridors.

Based on this preliminary analysis, Alternative 1 and Alternative 2 intersect with 29 known eligible or unevaluated cultural resources. Alternative 3 intersects with 27 such resources, while Alternative 4 intersects with 37. These findings are intended to support early coordination and inform planning-level decisions. All identified resources will be subject to further refinement and evaluation during the NEPA process and in consultation with your office under Section 106 of the National Historic Preservation Act.

We welcome any feedback or input your office may have at this stage and look forward to continued coordination as the study progresses. We are currently documenting the PEL process, recommendations, and key next steps in a PEL Report. We will include any input received by September 29, 2025. Input we receive after that data will be considered as we move forward into NEPA.

Sincerely

A handwritten signature in blue ink that reads "Mark Wasdahl". The signature is written in a cursive, flowing style.

Mark Wasdahl, Project Manager



**Your Safety • Your Mobility  
Your Economic Opportunity**

**IDAHO TRANSPORTATION DEPARTMENT**

P.O. Box 7129 • Boise, ID 83707-1129  
(208) 334-8000 • [itd.idaho.gov](http://itd.idaho.gov)

September 11, 2025

Dan Opalski  
Region 10 Administrator  
Environmental Protection Agency  
1200 Sixth Avenue, Suite 155  
Seattle, Washington 98101

RE: State Highway 44 (SH-44), Interstate 84 (I-84) to Star Road Planning and Environmental Linkages (PEL) Study Alternatives Screening and Next Steps

Dear Mr. Opalski:

The Idaho Transportation Department (ITD) is currently finishing a Planning and Environmental Linkages (PEL) Study for SH-44, from I-84 to Star Road, in Ada and Canyon counties, Idaho. The purpose of the PEL study is to develop and evaluate a range of alternatives to address existing and projected congestion and safety concerns, and to identify alternatives to carry forward into the National Environmental Policy Act (NEPA) process.

A draft project purpose and need statement was developed early in the study and used as the foundation for developing concept-level alternatives. Each alternative has been reviewed and evaluated using screening criteria tailored to each screening level. Additional information and exhibits related to the Level One and Level Two screening processes are provided in the attached Alternatives Evaluation Memo.

Final Level 2 alternatives that were evaluated are as follows:

- Alternative 1: SH-44 Widening and Improvements on Existing Alignment
- Alternative 2: SH-44 South Alternate Route around Middleton at Ballard Lane
- Alternative 3: SH-44 South Alternate Route around Middleton at Cemetery Road
- Alternative 4: SH-44 One-way Couplet through Middleton to South

Through Level 1 and Level 2 screening and significant public and stakeholder engagement, ITD recommends advancing Alternatives 2 and 3 into NEPA. Alternatives 1 and 4 are not recommended. However, additional pre-NEPA design and analysis will be performed on all four alternatives where they deviate from the existing SH-44 alignment in Middleton in order to confirm which alternatives will move forward into NEPA for detailed analysis.

As part of this evaluation, ITD provided preliminary information regarding the environmental resources that may be present along each alternative. These estimates are based on planning-level assessments only; no formal field surveys have been conducted to date. Environmental resource data was obtained through a desktop review of the existing data sources. A windshield survey was also conducted to provide general field verification of the presence or absence of observable resources within the alternative corridors.



**Your Safety • Your Mobility**  
**Your Economic Opportunity**

**IDAHO TRANSPORTATION DEPARTMENT**

P.O. Box 7129 • Boise, ID 83707-1129

(208) 334-8000 • [itd.idaho.gov](http://itd.idaho.gov)

We welcome any feedback or input your office may have at this stage and look forward to continued coordination as the study progresses. We are currently documenting the PEL process, recommendations, and key next steps in a PEL Report. We will include any input received by September 29, 2025. Input we receive after that date will be considered as we move forward into NEPA.

Sincerely

A handwritten signature in blue ink that reads "Mark Wasdahl". The signature is written in a cursive, flowing style.

Mark Wasdahl, Project Manager



**Your Safety • Your Mobility**  
**Your Economic Opportunity**

**IDAHO TRANSPORTATION DEPARTMENT**

P.O. Box 7129 • Boise, ID 83707-1129  
(208) 334-8000 • [itd.idaho.gov](http://itd.idaho.gov)

September 11, 2025

Kelly Urbanek  
Chief Regulatory Division  
U.S. Army Corps of Engineers  
720 E Park Boulevard, Suite 245  
Boise, Idaho 83712

RE: State Highway 44 (SH-44), Interstate 84 (I-84) to Star Road Planning and Environmental Linkages (PEL) Study Alternatives Screening and Next Steps

Dear Ms. Urbanek:

The Idaho Transportation Department (ITD) is currently finishing a Planning and Environmental Linkages (PEL) Study for SH-44, from I-84 to Star Road, in Ada and Canyon counties, Idaho. The purpose of the PEL study is to develop and evaluate a range of alternatives to address existing and projected congestion and safety concerns, and to identify alternatives to carry forward into the National Environmental Policy Act (NEPA) process.

A draft project purpose and need statement was developed early in the study and used as the foundation for developing concept-level alternatives. Each alternative has been reviewed and evaluated using screening criteria tailored to each screening level. Additional information and exhibits related to the Level One and Level Two screening processes are provided in the attached Alternatives Evaluation Memo.

Final Level 2 alternatives that were evaluated are as follows:

- Alternative 1: SH-44 Widening and Improvements on Existing Alignment
- Alternative 2: SH-44 South Alternate Route around Middleton at Ballard Lane
- Alternative 3: SH-44 South Alternate Route around Middleton at Cemetery Road
- Alternative 4: SH-44 One-way Couplet through Middleton to South

Through Level 1 and Level 2 screening and significant public and stakeholder engagement, ITD recommends advancing Alternatives 2 and 3 into NEPA. Alternatives 1 and 4 are not recommended. However, additional pre-NEPA design and analysis will be performed on all four alternatives where they deviate from the existing SH-44 alignment in Middleton in order to confirm which alternatives will move forward into NEPA for detailed analysis.

As part of this evaluation, ITD provided preliminary information regarding aquatic resources that may be present along each alternative. These estimates are based on planning-level assessments only; no formal field surveys have been conducted to date. Aquatic resource data was obtained through a desktop review of the U.S. Fish and Wildlife Service National Wetland Inventory Maps and U.S. Geological Survey National Hydrology dataset. A windshield survey was also conducted to provide



**Your Safety • Your Mobility  
Your Economic Opportunity**

**IDAHO TRANSPORTATION DEPARTMENT**

P.O. Box 7129 • Boise, ID 83707-1129

(208) 334-8000 • [itd.idaho.gov](http://itd.idaho.gov)

general field verification of the presence or absence of observable resources within the alternative corridors.

Based on this preliminary analysis, Alternative 1 intersects approximately 11,600 linear feet of irrigation canals, 730 linear feet of natural streams, and less than an acre of freshwater emergent wetlands. Alternative 2 intersects approximately 15,740 linear feet of irrigation canals, 820 linear feet of natural streams, and two acres of freshwater emergent wetlands. Alternative 3 intersects approximately 13,040 linear feet of irrigation canals, 790 linear feet of natural streams, and less than an acre of freshwater emergent wetlands. Alternative 4 intersects approximately 12,630 linear feet of irrigation canals, 920 linear feet of natural streams, and less than an acre of freshwater emergent wetlands. All identified resources will be subject to further refinement and evaluation during the NEPA process and in consultation with your office.

We welcome any feedback or input your office may have at this stage and look forward to continued coordination as the study progresses. We are currently documenting the PEL process, recommendations, and key next steps in a PEL Report. We will include any input received by September 29, 2025. Input we receive after that date will be considered as we move forward into NEPA.

Sincerely

Mark Wasdahl, Project Manager



**Your Safety • Your Mobility**  
**Your Economic Opportunity**

**IDAHO TRANSPORTATION DEPARTMENT**

P.O. Box 7129 • Boise, ID 83707-1129  
(208) 334-8000 • [itd.idaho.gov](http://itd.idaho.gov)

September 11, 2025

Jacob Cordtz  
ITD Liaison/Environmental Resource Specialist  
U.S. Army Corps of Engineers  
720 E Park Boulevard, Suite 245  
Boise, Idaho 83712

RE: State Highway 44 (SH-44), Interstate 84 (I-84) to Star Road Planning and Environmental Linkages (PEL) Study Alternatives Screening and Next Steps

Dear Mr. Cordtz:

The Idaho Transportation Department (ITD) is currently finishing a Planning and Environmental Linkages (PEL) Study for SH-44, from I-84 to Star Road, in Ada and Canyon counties, Idaho. The purpose of the PEL study is to develop and evaluate a range of alternatives to address existing and projected congestion and safety concerns, and to identify alternatives to carry forward into the National Environmental Policy Act (NEPA) process.

A draft project purpose and need statement was developed early in the study and used as the foundation for developing concept-level alternatives. Each alternative has been reviewed and evaluated using screening criteria tailored to each screening level. Additional information and exhibits related to the Level One and Level Two screening processes are provided in the attached Alternatives Evaluation Memo.

Final Level 2 alternatives that were evaluated are as follows:

- Alternative 1: SH-44 Widening and Improvements on Existing Alignment
- Alternative 2: SH-44 South Alternate Route around Middleton at Ballard Lane
- Alternative 3: SH-44 South Alternate Route around Middleton at Cemetery Road
- Alternative 4: SH-44 One-way Couplet through Middleton to South

Through Level 1 and Level 2 screening and significant public and stakeholder engagement, ITD recommends advancing Alternatives 2 and 3 into NEPA. Alternatives 1 and 4 are not recommended. However, additional pre-NEPA design and analysis will be performed on all four alternatives where they deviate from the existing SH-44 alignment in Middleton in order to confirm which alternatives will move forward into NEPA for detailed analysis.

As part of this evaluation, ITD provided preliminary information regarding aquatic resources that may be present along each alternative. These estimates are based on planning-level assessments only; no formal field surveys have been conducted to date. Aquatic resource data was obtained through a desktop review of the U.S. Fish and Wildlife Service National Wetland Inventory Maps and U.S. Geological Survey National Hydrology dataset. A windshield survey was also conducted to provide



**Your Safety • Your Mobility**  
**Your Economic Opportunity**

**IDAHO TRANSPORTATION DEPARTMENT**

P.O. Box 7129 • Boise, ID 83707-1129  
(208) 334-8000 • [itd.idaho.gov](http://itd.idaho.gov)

general field verification of the presence or absence of observable resources within the alternative corridors.

Based on this preliminary analysis, Alternative 1 intersects approximately 11,600 linear feet of irrigation canals, 730 linear feet of natural streams, and less than an acre of freshwater emergent wetlands. Alternative 2 intersects approximately 15,740 linear feet of irrigation canals, 820 linear feet of natural streams, and two acres of freshwater emergent wetlands. Alternative 3 intersects approximately 13,040 linear feet of irrigation canals, 790 linear feet of natural streams, and less than an acre of freshwater emergent wetlands. Alternative 4 intersects approximately 12,630 linear feet of irrigation canals, 920 linear feet of natural streams, and less than an acre of freshwater emergent wetlands. All identified resources will be subject to further refinement and evaluation during the NEPA process and in consultation with your office.

We welcome any feedback or input your office may have at this stage and look forward to continued coordination as the study progresses. We are currently documenting the PEL process, recommendations, and key next steps in a PEL Report. We will include any input received by September 29, 2025. Input we receive after that data will be considered as we move forward into NEPA.

Sincerely

A handwritten signature in blue ink that reads "Mark Wasdahl".

Mark Wasdahl, Project Manager



**Your Safety • Your Mobility  
Your Economic Opportunity**

**IDAHO TRANSPORTATION DEPARTMENT**

P.O. Box 7129 • Boise, ID 83707-1129  
(208) 334-8000 • [itd.idaho.gov](http://itd.idaho.gov)

September 11, 2025

Lisa Ellis  
State Supervisor  
U.S. Fish and Wildlife Service  
1387 South Vinnell Way, Suite 368  
Boise, Idaho 83709-1657

RE: State Highway 44 (SH-44), Interstate 84 (I-84) to Star Road Planning and Environmental Linkages (PEL) Study Alternatives Screening and Next Steps

Dear Ms. Ellis:

The Idaho Transportation Department (ITD) is currently finishing a Planning and Environmental Linkages (PEL) Study for SH-44, from I-84 to Star Road, in Ada and Canyon counties, Idaho. The purpose of the PEL study is to develop and evaluate a range of alternatives to address existing and projected congestion and safety concerns, and to identify alternatives to carry forward into the National Environmental Policy Act (NEPA) process.

A draft project purpose and need statement was developed early in the study and used as the foundation for developing concept-level alternatives. Each alternative has been reviewed and evaluated using screening criteria tailored to each screening level. Additional information and exhibits related to the Level One and Level Two screening processes are provided in the attached Alternatives Evaluation Memo.

Final Level 2 alternatives that were evaluated are as follows:

- Alternative 1: SH-44 Widening and Improvements on Existing Alignment
- Alternative 2: SH-44 South Alternate Route around Middleton at Ballard Lane
- Alternative 3: SH-44 South Alternate Route around Middleton at Cemetery Road
- Alternative 4: SH-44 One-way Couplet through Middleton to South

Through Level 1 and Level 2 screening and significant public and stakeholder engagement, ITD recommends advancing Alternatives 2 and 3 into NEPA. Alternatives 1 and 4 are not recommended. However, additional pre-NEPA design and analysis will be performed on all four alternatives where they deviate from the existing SH-44 alignment in Middleton in order to confirm which alternatives will move forward into NEPA for detailed analysis.

As part of this evaluation, ITD provided preliminary information regarding the environmental resources that may be present along each alternative. These estimates are based on planning-level assessments only; no formal field surveys have been conducted to date. Environmental resource data was obtained through a desktop review of the existing data sources. A windshield survey was also conducted to provide general field verification of the presence or absence of observable resources within the alternative corridors.



**Your Safety • Your Mobility  
Your Economic Opportunity**

**IDAHO TRANSPORTATION DEPARTMENT**

P.O. Box 7129 • Boise, ID 83707-1129  
(208) 334-8000 • [itd.idaho.gov](http://itd.idaho.gov)

We welcome any feedback or input your office may have at this stage and look forward to continued coordination as the study progresses. We are currently documenting the PEL process, recommendations, and key next steps in a PEL Report. We will include any input received by September 29, 2025. Input we receive after that date will be considered as we move forward into NEPA.

Sincerely

A handwritten signature in blue ink that reads "Mark Wasdahl". The signature is written in a cursive, flowing style.

Mark Wasdahl, Project Manager



**Your Safety • Your Mobility**  
**Your Economic Opportunity**

**IDAHO TRANSPORTATION DEPARTMENT**

P.O. Box 7129 • Boise, ID 83707-1129  
(208) 334-8000 • [itd.idaho.gov](http://itd.idaho.gov)

September 11, 2025

Troy Smith  
Regional Administrator  
Idaho Department of Environmental Quality  
1445 N. Orchard St.  
Boise, ID 83706

RE: State Highway 44 (SH-44), Interstate 84 (I-84) to Star Road Planning and Environmental Linkages (PEL) Study Alternatives Screening and Next Steps

Dear Mr. Smith:

The Idaho Transportation Department (ITD) is currently finishing a Planning and Environmental Linkages (PEL) Study for SH-44, from I-84 to Star Road, in Ada and Canyon counties, Idaho. The purpose of the PEL study is to develop and evaluate a range of alternatives to address existing and projected congestion and safety concerns, and to identify alternatives to carry forward into the National Environmental Policy Act (NEPA) process.

A draft project purpose and need statement was developed early in the study and used as the foundation for developing concept-level alternatives. Each alternative has been reviewed and evaluated using screening criteria tailored to each screening level. Additional information and exhibits related to the Level One and Level Two screening processes are provided in the attached Alternatives Evaluation Memo.

Final Level 2 alternatives that were evaluated are as follows:

- Alternative 1: SH-44 Widening and Improvements on Existing Alignment
- Alternative 2: SH-44 South Alternate Route around Middleton at Ballard Lane
- Alternative 3: SH-44 South Alternate Route around Middleton at Cemetery Road
- Alternative 4: SH-44 One-way Couplet through Middleton to South

Through Level 1 and Level 2 screening and significant public and stakeholder engagement, ITD recommends advancing Alternatives 2 and 3 into NEPA. Alternatives 1 and 4 are not recommended. However, additional pre-NEPA design and analysis will be performed on all four alternatives where they deviate from the existing SH-44 alignment in Middleton in order to confirm which alternatives will move forward into NEPA for detailed analysis.

As part of this evaluation, ITD provided preliminary information regarding the environmental resources that may be present along each alternative. These estimates are based on planning-level assessments only; no formal field surveys have been conducted to date. Environmental resource data was obtained through a desktop review of the existing data sources. A windshield survey was also conducted to provide general field verification of the presence or absence of observable resources within the alternative corridors.



**Your Safety • Your Mobility  
Your Economic Opportunity**

**IDAHO TRANSPORTATION DEPARTMENT**

P.O. Box 7129 • Boise, ID 83707-1129  
(208) 334-8000 • [itd.idaho.gov](http://itd.idaho.gov)

We welcome any feedback or input your office may have at this stage and look forward to continued coordination as the study progresses. We are currently documenting the PEL process, recommendations, and key next steps in a PEL Report. We will include any input received by September 29, 2025. Input we receive after that date will be considered as we move forward into NEPA.

Sincerely

A handwritten signature in blue ink that reads 'Mark Wasdahl'.

Mark Wasdahl, Project Manager



**Your Safety • Your Mobility  
Your Economic Opportunity**

**IDAHO TRANSPORTATION DEPARTMENT**

P.O. Box 7129 • Boise, ID 83707-1129  
(208) 334-8000 • [itd.idaho.gov](http://itd.idaho.gov)

September 11, 2025

Aaron Golart  
State Coordinator Stream Protection Program  
Idaho Department of Water Resources  
322 E Front St STE 648  
Po Box 83720  
Boise ID 83720-0098

RE: State Highway 44 (SH-44), Interstate 84 (I-84) to Star Road Planning and Environmental Linkages (PEL) Study Alternatives Screening and Next Steps

Dear Mr. Golart:

The Idaho Transportation Department (ITD) is currently finishing a Planning and Environmental Linkages (PEL) Study for SH-44, from I-84 to Star Road, in Ada and Canyon counties, Idaho. The purpose of the PEL study is to develop and evaluate a range of alternatives to address existing and projected congestion and safety concerns, and to identify alternatives to carry forward into the National Environmental Policy Act (NEPA) process.

A draft project purpose and need statement was developed early in the study and used as the foundation for developing concept-level alternatives. Each alternative has been reviewed and evaluated using screening criteria tailored to each screening level. Additional information and exhibits related to the Level One and Level Two screening processes are provided in the attached Alternatives Evaluation Memo.

Final Level 2 alternatives that were evaluated are as follows:

- Alternative 1: SH-44 Widening and Improvements on Existing Alignment
- Alternative 2: SH-44 South Alternate Route around Middleton at Ballard Lane
- Alternative 3: SH-44 South Alternate Route around Middleton at Cemetery Road
- Alternative 4: SH-44 One-way Couplet through Middleton to South

Through Level 1 and Level 2 screening and significant public and stakeholder engagement, ITD recommends advancing Alternatives 2 and 3 into NEPA. Alternatives 1 and 4 are not recommended. However, additional pre-NEPA design and analysis will be performed on all four alternatives where they deviate from the existing SH-44 alignment in Middleton in order to confirm which alternatives will move forward into NEPA for detailed analysis.

As part of this evaluation, ITD provided preliminary information regarding aquatic resources that may be present along each alternative. These estimates are based on planning-level assessments only; no formal field surveys have been conducted to date. Aquatic resource data was obtained through a desktop review of the U.S. Fish and Wildlife Service National Wetland Inventory Maps and U.S. Geological Survey National Hydrology dataset. A windshield survey was also conducted to provide



**Your Safety • Your Mobility  
Your Economic Opportunity**

**IDAHO TRANSPORTATION DEPARTMENT**

P.O. Box 7129 • Boise, ID 83707-1129  
(208) 334-8000 • [itd.idaho.gov](http://itd.idaho.gov)

general field verification of the presence or absence of observable resources within the alternative corridors.

Based on this preliminary analysis, Alternative 1 would intersect approximately 730 linear feet of natural streams, Alternative 2 would intersect approximately 820 linear feet, Alternative 3 would intersect approximately 790 linear feet, and Alternative 4 would intersect approximately 920 linear feet. All identified resources will be subject to further refinement and evaluation during the NEPA process and in consultation with your office.

We welcome any feedback or input your office may have at this stage and look forward to continued coordination as the study progresses. We are currently documenting the PEL process, recommendations, and key next steps in a PEL Report. We will include any input received by September 29, 2025. Input we receive after that date will be considered as we move forward into NEPA.

Sincerely

A handwritten signature in blue ink that reads 'Mark Wasdahl'.

Mark Wasdahl, Project Manager



**Your Safety • Your Mobility  
Your Economic Opportunity**

**IDAHO TRANSPORTATION DEPARTMENT**

P.O. Box 7129 • Boise, ID 83707-1129  
(208) 334-8000 • [itd.idaho.gov](http://itd.idaho.gov)

September 11, 2025

Maureen O'Shea  
State Floodplain Coordinator  
Idaho Department of Water Resources  
322 E Front St STE 648  
Po Box 83720  
Boise ID 83720-0098

RE: State Highway 44 (SH-44), Interstate 84 (I-84) to Star Road Planning and Environmental Linkages (PEL) Study Alternatives Screening and Next Steps

Dear Ms. O'Shea:

The Idaho Transportation Department (ITD) is currently finishing a Planning and Environmental Linkages (PEL) Study for SH-44, from I-84 to Star Road, in Ada and Canyon counties, Idaho. The purpose of the PEL study is to develop and evaluate a range of alternatives to address existing and projected congestion and safety concerns, and to identify alternatives to carry forward into the National Environmental Policy Act (NEPA) process.

A draft project purpose and need statement was developed early in the study and used as the foundation for developing concept-level alternatives. Each alternative has been reviewed and evaluated using screening criteria tailored to each screening level. Additional information and exhibits related to the Level One and Level Two screening processes are provided in the attached Alternatives Evaluation Memo.

Final Level 2 alternatives that were evaluated are as follows:

- Alternative 1: SH-44 Widening and Improvements on Existing Alignment
- Alternative 2: SH-44 South Alternate Route around Middleton at Ballard Lane
- Alternative 3: SH-44 South Alternate Route around Middleton at Cemetery Road
- Alternative 4: SH-44 One-way Couplet through Middleton to South

Through Level 1 and Level 2 screening and significant public and stakeholder engagement, ITD recommends advancing Alternatives 2 and 3 into NEPA. Alternatives 1 and 4 are not recommended. However, additional pre-NEPA design and analysis will be performed on all four alternatives where they deviate from the existing SH-44 alignment in Middleton in order to confirm which alternatives will move forward into NEPA for detailed analysis.

As part of this evaluation, ITD provided preliminary information regarding floodplains and floodway resources that may be present along each alternative. These estimates are based on planning-level assessments only; no formal field surveys have been conducted to date. Floodplain and floodway data was obtained through a desktop review of the Federal Emergency Management Agency



**Your Safety • Your Mobility  
Your Economic Opportunity**

**IDAHO TRANSPORTATION DEPARTMENT**

P.O. Box 7129 • Boise, ID 83707-1129  
(208) 334-8000 • [itd.idaho.gov](http://itd.idaho.gov)

floodplain dataset. A windshield survey was also conducted to provide general field verification of the presence or absence of observable resources within the alternative corridors.

Based on this preliminary analysis, Alternative 1 and Alternative 3 would intersect approximately 40 acres of flood zone, Alternative 2 would intersect approximately 50 acres, and Alternative 4 would intersect approximately 45 acres. These findings are intended to support early coordination and inform planning-level decisions. All identified resources will be subject to further refinement and evaluation during the NEPA process and in consultation with your office.

We welcome any feedback or input your office may have at this stage and look forward to continued coordination as the study progresses. We are currently documenting the PEL process, recommendations, and key next steps in a PEL Report. We will include any input received by September 29, 2025. Input we receive after that data will be considered as we move forward into NEPA.

Sincerely

A handwritten signature in blue ink that reads "Mark Wasdahl".

Mark Wasdahl, Project Manager



**Your Safety • Your Mobility**  
**Your Economic Opportunity**

**IDAHO TRANSPORTATION DEPARTMENT**

P.O. Box 7129 • Boise, ID 83707-1129  
(208) 334-8000 • [itd.idaho.gov](http://itd.idaho.gov)

September 11, 2025

Jim Fredericks  
Director  
Idaho Fish and Game  
600 S Walnut Street  
Boise, Idaho 83712

RE: State Highway 44 (SH-44), Interstate 84 (I-84) to Star Road Planning and Environmental Linkages (PEL) Study Alternatives Screening and Next Steps

Dear Mr. Fredericks:

The Idaho Transportation Department (ITD) is currently finishing a Planning and Environmental Linkages (PEL) Study for SH-44, from I-84 to Star Road, in Ada and Canyon counties, Idaho. The purpose of the PEL study is to develop and evaluate a range of alternatives to address existing and projected congestion and safety concerns, and to identify alternatives to carry forward into the National Environmental Policy Act (NEPA) process.

A draft project purpose and need statement was developed early in the study and used as the foundation for developing concept-level alternatives. Each alternative has been reviewed and evaluated using screening criteria tailored to each screening level. Additional information and exhibits related to the Level One and Level Two screening processes are provided in the attached Alternatives Evaluation Memo.

Final Level 2 alternatives that were evaluated are as follows:

- Alternative 1: SH-44 Widening and Improvements on Existing Alignment
- Alternative 2: SH-44 South Alternate Route around Middleton at Ballard Lane
- Alternative 3: SH-44 South Alternate Route around Middleton at Cemetery Road
- Alternative 4: SH-44 One-way Couplet through Middleton to South

Through Level 1 and Level 2 screening and significant public and stakeholder engagement, ITD recommends advancing Alternatives 2 and 3 into NEPA. Alternatives 1 and 4 are not recommended. However, additional pre-NEPA design and analysis will be performed on all four alternatives where they deviate from the existing SH-44 alignment in Middleton in order to confirm which alternatives will move forward into NEPA for detailed analysis.

As part of this evaluation, ITD provided preliminary information regarding the environmental resources that may be present along each alternative. These estimates are based on planning-level assessments only; no formal field surveys have been conducted to date. Environmental resource data was obtained through a desktop review of the existing data sources. A windshield survey was also conducted to provide general field verification of the presence or absence of observable resources within the alternative corridors.



**Your Safety • Your Mobility  
Your Economic Opportunity**

**IDAHO TRANSPORTATION DEPARTMENT**

P.O. Box 7129 • Boise, ID 83707-1129  
(208) 334-8000 • [itd.idaho.gov](http://itd.idaho.gov)

We welcome any feedback or input your office may have at this stage and look forward to continued coordination as the study progresses. We are currently documenting the PEL process, recommendations, and key next steps in a PEL Report. We will include any input received by September 29, 2025. Input we receive after that data will be considered as we move forward into NEPA.

Sincerely

A handwritten signature in blue ink that reads 'Mark Wasdahl'.

Mark Wasdahl, Project Manager



**Your Safety • Your Mobility  
Your Economic Opportunity**

**IDAHO TRANSPORTATION DEPARTMENT**

P.O. Box 7129 • Boise, ID 83707-1129  
(208) 334-8000 • [itd.idaho.gov](http://itd.idaho.gov)

September 11, 2025

Jennifer Carrington  
Regional Director  
Bureau of Reclamation  
230 Collins Road  
Boise, Idaho 83702

RE: State Highway 44 (SH-44), Interstate 84 (I-84) to Star Road Planning and Environmental Linkages (PEL) Study Alternatives Screening and Next Steps

Dear Ms. Carrington:

The Idaho Transportation Department (ITD) is currently finishing a Planning and Environmental Linkages (PEL) Study for SH-44, from I-84 to Star Road, in Ada and Canyon counties, Idaho. The purpose of the PEL study is to develop and evaluate a range of alternatives to address existing and projected congestion and safety concerns, and to identify alternatives to carry forward into the National Environmental Policy Act (NEPA) process.

A draft project purpose and need statement was developed early in the study and used as the foundation for developing concept-level alternatives. Each alternative has been reviewed and evaluated using screening criteria tailored to each screening level. Additional information and exhibits related to the Level One and Level Two screening processes are provided in the attached Alternatives Evaluation Memo.

Final Level 2 alternatives that were evaluated are as follows:

- Alternative 1: SH-44 Widening and Improvements on Existing Alignment
- Alternative 2: SH-44 South Alternate Route around Middleton at Ballard Lane
- Alternative 3: SH-44 South Alternate Route around Middleton at Cemetery Road
- Alternative 4: SH-44 One-way Couplet through Middleton to South

Through Level 1 and Level 2 screening and significant public and stakeholder engagement, ITD recommends advancing Alternatives 2 and 3 into NEPA. Alternatives 1 and 4 are not recommended. However, additional pre-NEPA design and analysis will be performed on all four alternatives where they deviate from the existing SH-44 alignment in Middleton in order to confirm which alternatives will move forward into NEPA for detailed analysis.

As part of this evaluation, ITD provided preliminary information regarding the environmental resources that may be present along each alternative. These estimates are based on planning-level assessments only; no formal field surveys have been conducted to date. Environmental resource data was obtained through a desktop review of the existing data sources. A windshield survey was also conducted to provide general field verification of the presence or absence of observable resources within the alternative corridors.



**Your Safety • Your Mobility  
Your Economic Opportunity**

**IDAHO TRANSPORTATION DEPARTMENT**

P.O. Box 7129 • Boise, ID 83707-1129  
(208) 334-8000 • [itd.idaho.gov](http://itd.idaho.gov)

We welcome any feedback or input your office may have at this stage and look forward to continued coordination as the study progresses. We are currently documenting the PEL process, recommendations, and key next steps in a PEL Report. We will include any input received by September 29, 2025. Input we receive after that date will be considered as we move forward into NEPA.

Sincerely

Mark Wasdahl, Project Manager



**Your Safety • Your Mobility  
Your Economic Opportunity**

**IDAHO TRANSPORTATION DEPARTMENT**

P.O. Box 7129 • Boise, ID 83707-1129  
(208) 334-8000 • [itd.idaho.gov](http://itd.idaho.gov)

September 11, 2025

Bruce Sandoval  
Acting State Conservationist  
Natural Resources Conservation Service  
9173 W. Barnes Drive, Ste C  
Boise, ID 83709

RE: State Highway 44 (SH-44), Interstate 84 (I-84) to Star Road Planning and Environmental Linkages (PEL) Study Alternatives Screening and Next Steps

Dear Mr. Sandoval:

The Idaho Transportation Department (ITD) is currently finishing a Planning and Environmental Linkages (PEL) Study for SH-44, from I-84 to Star Road, in Ada and Canyon counties, Idaho. The purpose of the PEL study is to develop and evaluate a range of alternatives to address existing and projected congestion and safety concerns, and to identify alternatives to carry forward into the National Environmental Policy Act (NEPA) process.

A draft project purpose and need statement was developed early in the study and used as the foundation for developing concept-level alternatives. Each alternative has been reviewed and evaluated using screening criteria tailored to each screening level. Additional information and exhibits related to the Level One and Level Two screening processes are provided in the attached Alternatives Evaluation Memo.

Final Level 2 alternatives that were evaluated are as follows:

- Alternative 1: SH-44 Widening and Improvements on Existing Alignment
- Alternative 2: SH-44 South Alternate Route around Middleton at Ballard Lane
- Alternative 3: SH-44 South Alternate Route around Middleton at Cemetery Road
- Alternative 4: SH-44 One-way Couplet through Middleton to South

Through Level 1 and Level 2 screening and significant public and stakeholder engagement, ITD recommends advancing Alternatives 2 and 3 into NEPA. Alternatives 1 and 4 are not recommended. However, additional pre-NEPA design and analysis will be performed on all four alternatives where they deviate from the existing SH-44 alignment in Middleton in order to confirm which alternatives will move forward into NEPA for detailed analysis.

As part of this evaluation, ITD provided preliminary information regarding environmental resources that may be present along each alternative. These estimates are based on planning-level assessments only; no formal field surveys have been conducted to date. Prime farmland resource data was obtained through a desktop review of the Natural Resources Conservation Service Soil Survey database. A windshield survey was also conducted to provide general field verification of the presence or absence of observable resources within the alternative corridors.



**Your Safety • Your Mobility  
Your Economic Opportunity**

**IDAHO TRANSPORTATION DEPARTMENT**

P.O. Box 7129 • Boise, ID 83707-1129  
(208) 334-8000 • [itd.idaho.gov](http://itd.idaho.gov)

Based on this preliminary analysis, Alternative 1 would intersect approximately 262 acres of prime farmland and farmland of statewide importance; Alternative 2, approximately 278 acres; Alternative 3, approximately 270 acres; and Alternative 4, approximately 279 acres. These findings are intended to support early coordination and inform planning-level decisions. All identified resources will be subject to further refinement and evaluation during the NEPA process and in consultation with your office.

We welcome any feedback or input your office may have at this stage and look forward to continued coordination as the study progresses. We are currently documenting the PEL process, recommendations, and key next steps in a PEL Report. We will include any input received by September 29, 2025. Input we receive after that data will be considered as we move forward into NEPA.

Sincerely

A handwritten signature in blue ink that reads "Mark Wasdahl". The signature is written in a cursive, flowing style.

Mark Wasdahl, Project Manager



**Your Safety • Your Mobility**  
**Your Economic Opportunity**

**IDAHO TRANSPORTATION DEPARTMENT**

P.O. Box 7129 • Boise, ID 83707-1129  
(208) 334-8000 • [itd.idaho.gov](http://itd.idaho.gov)

September 11, 2025

Dean Johnson  
Area Manager  
Idaho Department of Lands  
8355 W. State St.  
Boise, ID 83714

RE: State Highway 44 (SH-44), Interstate 84 (I-84) to Star Road Planning and Environmental Linkages (PEL) Study Alternatives Screening and Next Steps

Dear Mr. Johnson:

The Idaho Transportation Department (ITD) is currently finishing a Planning and Environmental Linkages (PEL) Study for SH-44, from I-84 to Star Road, in Ada and Canyon counties, Idaho. The purpose of the PEL study is to develop and evaluate a range of alternatives to address existing and projected congestion and safety concerns, and to identify alternatives to carry forward into the National Environmental Policy Act (NEPA) process.

A draft project purpose and need statement was developed early in the study and used as the foundation for developing concept-level alternatives. Each alternative has been reviewed and evaluated using screening criteria tailored to each screening level. Additional information and exhibits related to the Level One and Level Two screening processes are provided in the attached Alternatives Evaluation Memo.

Final Level 2 alternatives that were evaluated are as follows:

- Alternative 1: SH-44 Widening and Improvements on Existing Alignment
- Alternative 2: SH-44 South Alternate Route around Middleton at Ballard Lane
- Alternative 3: SH-44 South Alternate Route around Middleton at Cemetery Road
- Alternative 4: SH-44 One-way Couplet through Middleton to South

Through Level 1 and Level 2 screening and significant public and stakeholder engagement, ITD recommends advancing Alternatives 2 and 3 into NEPA. Alternatives 1 and 4 are not recommended. However, additional pre-NEPA design and analysis will be performed on all four alternatives where they deviate from the existing SH-44 alignment in Middleton in order to confirm which alternatives will move forward into NEPA for detailed analysis.

As part of this evaluation, ITD provided preliminary information regarding the environmental resources that may be present along each alternative. These estimates are based on planning-level assessments only; no formal field surveys have been conducted to date. Environmental resource data was obtained through a desktop review of the existing data sources. A windshield survey was also conducted to provide general field verification of the presence or absence of observable resources within the alternative corridors.



**Your Safety • Your Mobility**  
**Your Economic Opportunity**

**IDAHO TRANSPORTATION DEPARTMENT**

P.O. Box 7129 • Boise, ID 83707-1129  
(208) 334-8000 • [itd.idaho.gov](http://itd.idaho.gov)

We welcome any feedback or input your office may have at this stage and look forward to continued coordination as the study progresses. We are currently documenting the PEL process, recommendations, and key next steps in a PEL Report. We will include any input received by September 29, 2025. Input we receive after that date will be considered as we move forward into NEPA.

Sincerely

A handwritten signature in blue ink that reads "Mark Wasdahl". The signature is written in a cursive, flowing style.

Mark Wasdahl, Project Manager



**Your Safety • Your Mobility**  
**Your Economic Opportunity**

**IDAHO TRANSPORTATION DEPARTMENT**

P.O. Box 7129 • Boise, ID 83707-1129  
(208) 334-8000 • [itd.idaho.gov](http://itd.idaho.gov)

September 11, 2025

Nikole Zogg  
Director  
Southwest District Health  
13307 Miami Lane  
Caldwell, ID 83607

RE: State Highway 44 (SH-44), Interstate 84 (I-84) to Star Road Planning and Environmental Linkages (PEL) Study Alternatives Screening and Next Steps

Dear Ms. Zogg:

The Idaho Transportation Department (ITD) is currently finishing a Planning and Environmental Linkages (PEL) Study for SH-44, from I-84 to Star Road, in Ada and Canyon counties, Idaho. The purpose of the PEL study is to develop and evaluate a range of alternatives to address existing and projected congestion and safety concerns, and to identify alternatives to carry forward into the National Environmental Policy Act (NEPA) process.

A draft project purpose and need statement was developed early in the study and used as the foundation for developing concept-level alternatives. Each alternative has been reviewed and evaluated using screening criteria tailored to each screening level. Additional information and exhibits related to the Level One and Level Two screening processes are provided in the attached Alternatives Evaluation Memo.

Final Level 2 alternatives that were evaluated are as follows:

- Alternative 1: SH-44 Widening and Improvements on Existing Alignment
- Alternative 2: SH-44 South Alternate Route around Middleton at Ballard Lane
- Alternative 3: SH-44 South Alternate Route around Middleton at Cemetery Road
- Alternative 4: SH-44 One-way Couplet through Middleton to South

Through Level 1 and Level 2 screening and significant public and stakeholder engagement, ITD recommends advancing Alternatives 2 and 3 into NEPA. Alternatives 1 and 4 are not recommended. However, additional pre-NEPA design and analysis will be performed on all four alternatives where they deviate from the existing SH-44 alignment in Middleton in order to confirm which alternatives will move forward into NEPA for detailed analysis.

As part of this evaluation, ITD provided preliminary information regarding the environmental resources that may be present along each alternative. These estimates are based on planning-level assessments only; no formal field surveys have been conducted to date. Environmental resource data was obtained through a desktop review of the existing data sources. A windshield survey was also conducted to provide general field verification of the presence or absence of observable resources within the alternative corridors.



**Your Safety • Your Mobility  
Your Economic Opportunity**

**IDAHO TRANSPORTATION DEPARTMENT**

P.O. Box 7129 • Boise, ID 83707-1129  
(208) 334-8000 • [itd.idaho.gov](http://itd.idaho.gov)

We welcome any feedback or input your office may have at this stage and look forward to continued coordination as the study progresses. We are currently documenting the PEL process, recommendations, and key next steps in a PEL Report. We will include any input received by September 29, 2025. Input we receive after that data will be considered as we move forward into NEPA.

Sincerely

A handwritten signature in blue ink that reads 'Mark Wasdahl'.

Mark Wasdahl, Project Manager



**Your Safety • Your Mobility  
Your Economic Opportunity**

**IDAHO TRANSPORTATION DEPARTMENT**

P.O. Box 7129 • Boise, ID 83707-1129  
(208) 334-8000 • [itd.idaho.gov](http://itd.idaho.gov)

September 11, 2025

Russell A. Duke  
Director  
Central District Health  
707 North Armstrong Place  
Boise, ID 83704-0825

RE: State Highway 44 (SH-44), Interstate 84 (I-84) to Star Road Planning and Environmental Linkages (PEL) Study Alternatives Screening and Next Steps

Dear Mr. Duke:

The Idaho Transportation Department (ITD) is currently finishing a Planning and Environmental Linkages (PEL) Study for SH-44, from I-84 to Star Road, in Ada and Canyon counties, Idaho. The purpose of the PEL study is to develop and evaluate a range of alternatives to address existing and projected congestion and safety concerns, and to identify alternatives to carry forward into the National Environmental Policy Act (NEPA) process.

A draft project purpose and need statement was developed early in the study and used as the foundation for developing concept-level alternatives. Each alternative has been reviewed and evaluated using screening criteria tailored to each screening level. Additional information and exhibits related to the Level One and Level Two screening processes are provided in the attached Alternatives Evaluation Memo.

Final Level 2 alternatives that were evaluated are as follows:

- Alternative 1: SH-44 Widening and Improvements on Existing Alignment
- Alternative 2: SH-44 South Alternate Route around Middleton at Ballard Lane
- Alternative 3: SH-44 South Alternate Route around Middleton at Cemetery Road
- Alternative 4: SH-44 One-way Couplet through Middleton to South

Through Level 1 and Level 2 screening and significant public and stakeholder engagement, ITD recommends advancing Alternatives 2 and 3 into NEPA. Alternatives 1 and 4 are not recommended. However, additional pre-NEPA design and analysis will be performed on all four alternatives where they deviate from the existing SH-44 alignment in Middleton in order to confirm which alternatives will move forward into NEPA for detailed analysis.

As part of this evaluation, ITD provided preliminary information regarding the environmental resources that may be present along each alternative. These estimates are based on planning-level assessments only; no formal field surveys have been conducted to date. Environmental resource data was obtained through a desktop review of the existing data sources. A windshield survey was also conducted to provide general field verification of the presence or absence of observable resources within the alternative corridors.



**Your Safety • Your Mobility**  
**Your Economic Opportunity**

**IDAHO TRANSPORTATION DEPARTMENT**

P.O. Box 7129 • Boise, ID 83707-1129  
(208) 334-8000 • [itd.idaho.gov](http://itd.idaho.gov)

We welcome any feedback or input your office may have at this stage and look forward to continued coordination as the study progresses. We are currently documenting the PEL process, recommendations, and key next steps in a PEL Report. We will include any input received by September 29, 2025. Input we receive after that data will be considered as we move forward into NEPA.

Sincerely

A handwritten signature in blue ink that reads "Mark Wasdahl". The signature is written in a cursive, flowing style.

Mark Wasdahl, Project Manager



**Your Safety • Your Mobility**  
**Your Economic Opportunity**

**IDAHO TRANSPORTATION DEPARTMENT**

P.O. Box 7129 • Boise, ID 83707-1129  
(208) 334-8000 • [itd.idaho.gov](http://itd.idaho.gov)

September 11, 2025

Rob Oates  
Airport Manager  
Caldwell Executive Airport  
P.O Box 1179  
Caldwell, ID 83606

RE: State Highway 44 (SH-44), Interstate 84 (I-84) to Star Road Planning and Environmental Linkages (PEL) Study Alternatives Screening and Next Steps

Dear Mr. Oates:

The Idaho Transportation Department (ITD) is currently finishing a Planning and Environmental Linkages (PEL) Study for SH-44, from I-84 to Star Road, in Ada and Canyon counties, Idaho. The purpose of the PEL study is to develop and evaluate a range of alternatives to address existing and projected congestion and safety concerns, and to identify alternatives to carry forward into the National Environmental Policy Act (NEPA) process.

A draft project purpose and need statement was developed early in the study and used as the foundation for developing concept-level alternatives. Each alternative has been reviewed and evaluated using screening criteria tailored to each screening level. Additional information and exhibits related to the Level One and Level Two screening processes are provided in the attached Alternatives Evaluation Memo.

Final Level 2 alternatives that were evaluated are as follows:

- Alternative 1: SH-44 Widening and Improvements on Existing Alignment
- Alternative 2: SH-44 South Alternate Route around Middleton at Ballard Lane
- Alternative 3: SH-44 South Alternate Route around Middleton at Cemetery Road
- Alternative 4: SH-44 One-way Couplet through Middleton to South

Through Level 1 and Level 2 screening and significant public and stakeholder engagement, ITD recommends advancing Alternatives 2 and 3 into NEPA. Alternatives 1 and 4 are not recommended. However, additional pre-NEPA design and analysis will be performed on all four alternatives where they deviate from the existing SH-44 alignment in Middleton in order to confirm which alternatives will move forward into NEPA for detailed analysis.

As part of this evaluation, ITD provided preliminary information regarding the environmental resources that may be present along each alternative. These estimates are based on planning-level assessments only; no formal field surveys have been conducted to date. Environmental resource data was obtained through a desktop review of the existing data sources. A windshield survey was also conducted to provide general field verification of the presence or absence of observable resources within the alternative corridors.



**Your Safety • Your Mobility  
Your Economic Opportunity**

**IDAHO TRANSPORTATION DEPARTMENT**

P.O. Box 7129 • Boise, ID 83707-1129

(208) 334-8000 • [itd.idaho.gov](http://itd.idaho.gov)

We welcome any feedback or input your office may have at this stage and look forward to continued coordination as the study progresses. We are currently documenting the PEL process, recommendations, and key next steps in a PEL Report. We will include any input received by September 29, 2025. Input we receive after that date will be considered as we move forward into NEPA.

Sincerely

A handwritten signature in blue ink that reads "Mark Wasdahl". The signature is written in a cursive, flowing style.

Mark Wasdahl, Project Manager



**Your Safety • Your Mobility**  
**Your Economic Opportunity**

**IDAHO TRANSPORTATION DEPARTMENT**

P.O. Box 7129 • Boise, ID 83707-1129  
(208) 334-8000 • [itd.idaho.gov](http://itd.idaho.gov)

September 11, 2025

Heidy Bruner  
Environmental Specialist (ID/MT)  
Federal Aviation Administration  
2725 Skyway Dr, Ste 2  
Helena, MT 59602-1205

RE: State Highway 44 (SH-44), Interstate 84 (I-84) to Star Road Planning and Environmental Linkages (PEL) Study Alternatives Screening and Next Steps

Dear Ms. Bruner:

The Idaho Transportation Department (ITD) is currently finishing a Planning and Environmental Linkages (PEL) Study for SH-44, from I-84 to Star Road, in Ada and Canyon counties, Idaho. The purpose of the PEL study is to develop and evaluate a range of alternatives to address existing and projected congestion and safety concerns, and to identify alternatives to carry forward into the National Environmental Policy Act (NEPA) process.

A draft project purpose and need statement was developed early in the study and used as the foundation for developing concept-level alternatives. Each alternative has been reviewed and evaluated using screening criteria tailored to each screening level. Additional information and exhibits related to the Level One and Level Two screening processes are provided in the attached Alternatives Evaluation Memo.

Final Level 2 alternatives that were evaluated are as follows:

- Alternative 1: SH-44 Widening and Improvements on Existing Alignment
- Alternative 2: SH-44 South Alternate Route around Middleton at Ballard Lane
- Alternative 3: SH-44 South Alternate Route around Middleton at Cemetery Road
- Alternative 4: SH-44 One-way Couplet through Middleton to South

Through Level 1 and Level 2 screening and significant public and stakeholder engagement, ITD recommends advancing Alternatives 2 and 3 into NEPA. Alternatives 1 and 4 are not recommended. However, additional pre-NEPA design and analysis will be performed on all four alternatives where they deviate from the existing SH-44 alignment in Middleton in order to confirm which alternatives will move forward into NEPA for detailed analysis.

As part of this evaluation, ITD provided preliminary information regarding the environmental resources that may be present along each alternative. These estimates are based on planning-level assessments only; no formal field surveys have been conducted to date. Environmental resource data was obtained through a desktop review of the existing data sources. A windshield survey was also conducted to provide general field verification of the presence or absence of observable resources within the alternative corridors.



**Your Safety • Your Mobility  
Your Economic Opportunity**

**IDAHO TRANSPORTATION DEPARTMENT**

P.O. Box 7129 • Boise, ID 83707-1129

(208) 334-8000 • [itd.idaho.gov](http://itd.idaho.gov)

We welcome any feedback or input your office may have at this stage and look forward to continued coordination as the study progresses. We are currently documenting the PEL process, recommendations, and key next steps in a PEL Report. We will include any input received by September 29, 2025. Input we receive after that data will be considered as we move forward into NEPA.

Sincerely

Mark Wasdahl, Project Manager



**Your Safety • Your Mobility**  
**Your Economic Opportunity**

**IDAHO TRANSPORTATION DEPARTMENT**

P.O. Box 7129 • Boise, ID 83707-1129  
(208) 334-8000 • [itd.idaho.gov](http://itd.idaho.gov)

September 11, 2025

Susan Buxton  
Director  
Idaho Department of Parks and Recreation  
5657 Warm Springs Avenue  
Boise, ID 83716

RE: State Highway 44 (SH-44), Interstate 84 (I-84) to Star Road Planning and Environmental Linkages (PEL) Study Alternatives Screening and Next Steps

Dear Ms. Buxton:

The Idaho Transportation Department (ITD) is currently finishing a Planning and Environmental Linkages (PEL) Study for SH-44, from I-84 to Star Road, in Ada and Canyon counties, Idaho. The purpose of the PEL study is to develop and evaluate a range of alternatives to address existing and projected congestion and safety concerns, and to identify alternatives to carry forward into the National Environmental Policy Act (NEPA) process.

A draft project purpose and need statement was developed early in the study and used as the foundation for developing concept-level alternatives. Each alternative has been reviewed and evaluated using screening criteria tailored to each screening level. Additional information and exhibits related to the Level One and Level Two screening processes are provided in the attached Alternatives Evaluation Memo.

Final Level 2 alternatives that were evaluated are as follows:

- Alternative 1: SH-44 Widening and Improvements on Existing Alignment
- Alternative 2: SH-44 South Alternate Route around Middleton at Ballard Lane
- Alternative 3: SH-44 South Alternate Route around Middleton at Cemetery Road
- Alternative 4: SH-44 One-way Couplet through Middleton to South

Through Level 1 and Level 2 screening and significant public and stakeholder engagement, ITD recommends advancing Alternatives 2 and 3 into NEPA. Alternatives 1 and 4 are not recommended. However, additional pre-NEPA design and analysis will be performed on all four alternatives where they deviate from the existing SH-44 alignment in Middleton in order to confirm which alternatives will move forward into NEPA for detailed analysis.

As part of this evaluation, ITD provided preliminary information regarding parks and recreation resources that may be present along each alternative. These estimates are based on planning-level assessments only; no formal field surveys have been conducted to date. Resource data was obtained through a desktop review of existing data sources. A windshield survey was also conducted to provide general field verification of the presence or absence of observable resources within the alternative corridors.



**Your Safety • Your Mobility  
Your Economic Opportunity**

**IDAHO TRANSPORTATION DEPARTMENT**

P.O. Box 7129 • Boise, ID 83707-1129  
(208) 334-8000 • [itd.idaho.gov](http://itd.idaho.gov)

Based on this preliminary analysis, Alternative 1 intersects with three recreation sites/parks and one resource funded through Land and Water Conservation Funds. Alternatives 2 and 3 would intersect two recreation sites/parks, while Alternative 4 would intersect five recreation sites/parks. These findings are intended to support early coordination and inform planning-level decisions. All identified resources will be subject to further refinement and evaluation during the NEPA process and in consultation with your office.

We welcome any feedback or input your office may have at this stage and look forward to continued coordination as the study progresses. We are currently documenting the PEL process, recommendations, and key next steps in a PEL Report. We will include any input received by September 29, 2025. Input we receive after that data will be considered as we move forward into NEPA.

Sincerely

A handwritten signature in blue ink that reads 'Mark Wasdahl'.

Mark Wasdahl, Project Manager

## Stacy Tschuor

---

**From:** Mark Wasdahl <Mark.Wasdahl@itd.idaho.gov>  
**Sent:** Wednesday, October 22, 2025 4:04 PM  
**To:** Greg Vitley; David Witthaus; Stacy Tschuor  
**Subject:** FW: SH-44, I-84 to Star Road PEL Study Alternatives and Next Steps

FYI,

*Mark Wasdahl*

Senior Planner

**Idaho Transportation Department – District 3**

Office: (208) 334-8344

Email: [mark.wasdahl@itd.idaho.gov](mailto:mark.wasdahl@itd.idaho.gov)

---

**From:** Mark Wasdahl  
**Sent:** Wednesday, October 22, 2025 4:03 PM  
**To:** 'Sturges, Susan' <Sturges.Susan@epa.gov>  
**Subject:** RE: SH-44, I-84 to Star Road PEL Study Alternatives and Next Steps

Thank you for your clear instructions that we will follow in all future communications. We just received the Draft PEL report from our consultant this week and we are currently reviewing it. A final copy will be sent after FHWA approval.

Thank you for your interest in our project.

*Mark Wasdahl*

Senior Planner

**Idaho Transportation Department – District 3**

Office: (208) 334-8344

Email: [mark.wasdahl@itd.idaho.gov](mailto:mark.wasdahl@itd.idaho.gov)

---

**From:** Sturges, Susan <Sturges.Susan@epa.gov>  
**Sent:** Wednesday, October 22, 2025 3:58 PM  
**To:** Mark Wasdahl <Mark.Wasdahl@itd.idaho.gov>  
**Subject:** RE: SH-44, I-84 to Star Road PEL Study Alternatives and Next Steps

**CAUTION: This email originated outside the State of Idaho network. Verify links and attachments BEFORE you click or open, even if you recognize and/or trust the sender. Contact your agency service desk with any concerns.**

---

Hello Mark,

Thank you for reaching out to the EPA regarding the SH-44, I-84 to Star Road PEL Study. EPA received ITD's September 12<sup>th</sup> letter on the Study Alternatives and Next Steps. The hard copy letter was sent by mail to Dan Opalski, the R10 EPA Deputy Administrator. If possible, may we request receiving future SH-44 PEL communications and document distribution by email instead of mailed hard copy? If so, please provide by email to me at [sturges.susan@epa.gov](mailto:sturges.susan@epa.gov) with a CC to our NEPA Branch shared email account [R10-NEPA@epa.gov](mailto:R10-NEPA@epa.gov)

Regrettably, the hard copy letter did not find its way to me, R10's primary contact for PELs, until the same day the letter requests input (Sept 29<sup>th</sup>). We currently do not have feedback at this time but are interested in receiving the PEL report when available and other project updates.

We appreciate the opportunity to engage in the PEL.

Sincerely,

Susan Sturges  
Senior NEPA Reviewer, Transportation Lead

U.S. Environmental Protection Agency Region 10  
NEPA Branch  
Seattle, Washington  
(206) 553-2117 | [sturges.susan@epa.gov](mailto:sturges.susan@epa.gov)

Submit NEPA environmental review documents to [R10-NEPA@epa.gov](mailto:R10-NEPA@epa.gov)